

X:\08-779 Western Common Wilderness Master Plan\AccGIS maps\Figures\Figure 18 - Species Richness.mxd - 25/09/2009 @ 2:12:22 PM

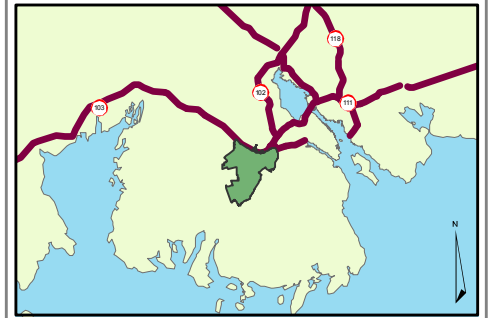
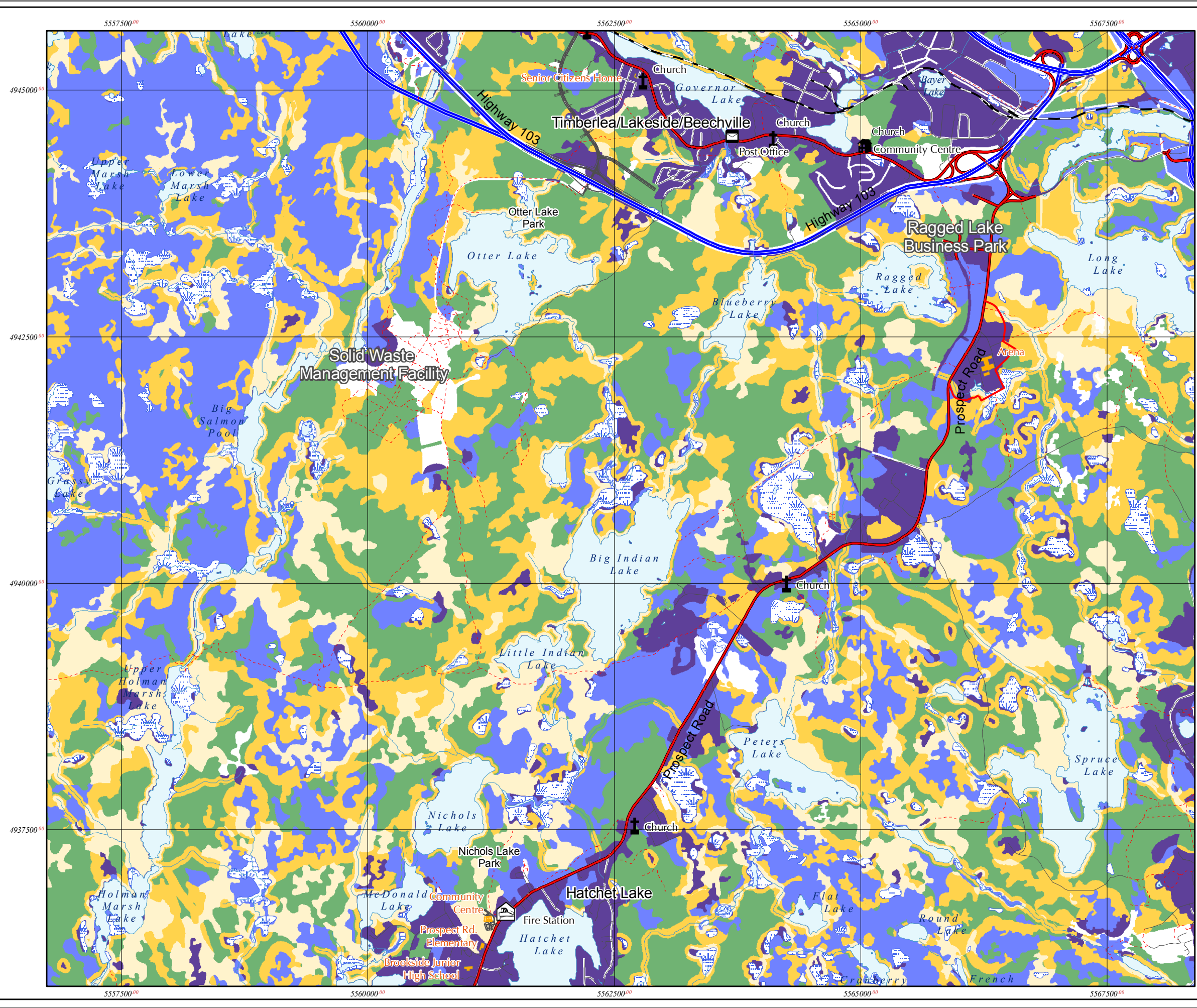


Figure 18
Species Richness

Number of Species

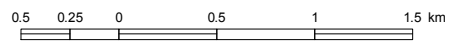
| | |
|--------------|---------|
| Light Yellow | 39 - 63 |
| Yellow | 32 - 38 |
| Green | 29 - 31 |
| Blue | 13 - 28 |
| Dark Blue | 1 - 12 |
| White | 0 |

Data Source: HRM, EDM
Projection: 3°MTM, Zone 5
Horizontal Datum: AT577
March 2009

The following is a graphical representation and although care has been taken to ensure the best possible quality, EDM does not guarantee the accuracy of this document.

Prepared by **EDM**
ENVIRONMENTAL DESIGN
AND MANAGEMENT LIMITED

Prepared for
HALIFAX
REGIONAL MUNICIPALITY



**WESTERN COMMON
WILDERNESS COMMON
MASTER PLAN**