

LTAS  
Regular Steering Committee  
Meeting

Thursday, February 17, 2011

# Existing Arenas in HRM

1927 Halifax Forum (84)  
1964 Shearwater Arena (47)  
1966 Saint Mary's Arena (45)  
1967 Centennial Arena (44)  
1969 Shannon Park Arena (42)  
1971 Devonshire Arena (40)  
1972 Bowles Arena (39)  
1972 Lebrun Arena (39)  
1972 Gray Arena (39)  
1972 Spryfield Arena (39)  
1973 Sackville Arena (38)  
1973 Eastern Shore Centre (38)

1975 Scotia Arena (CHP) (36)  
1977 Halifax Metro Centre (34)  
1982 Dartmouth Sportsplex(29)  
1983 Dalhousie Arena (28)  
1987 St MargaretsCentre#1(24)  
1988 Cole Harbour Arena #2 (23)  
1989 Sackville Sports Stadium (22)  
1995 Halifax Civic Arena (16)  
2005 St Margarets Centre #2 (6)  
2008 Bedford Dome Arena (2)  
2010 BMO Centre 4 pad (1)

Total 26

# Arena Lifecycle

- Major recap required at 30 yrs to extend reliability (\$2M +/-)
- Assumes 1.5 – 2% of total cost has been invested annually for recapitalization
- Annual investment has been less than 1.5-2%
- Major recap will therefore exceed \$2M

# Arena Strategy to Date

- Short Term – addressed immediate need for additional inventory – introduced 4 new sheets
- Long Term – addresses aging arenas and user growth in previous underserved activities
- Goal is to maintain 26 sheets and manage risks of closures

# Approx. Replacement costs (08)

- Cost per single pad       $9.5\text{M} - 12\text{M} \times 4 = 48\text{M}$  (08)  
plus land
- Cost per twin               $17\text{M} - 22\text{M} \times 2 = 44\text{M}$  (08)  
plus land
- Cost for quad              2010 dollars = 36M for quad  
plus land

# Arena Operations

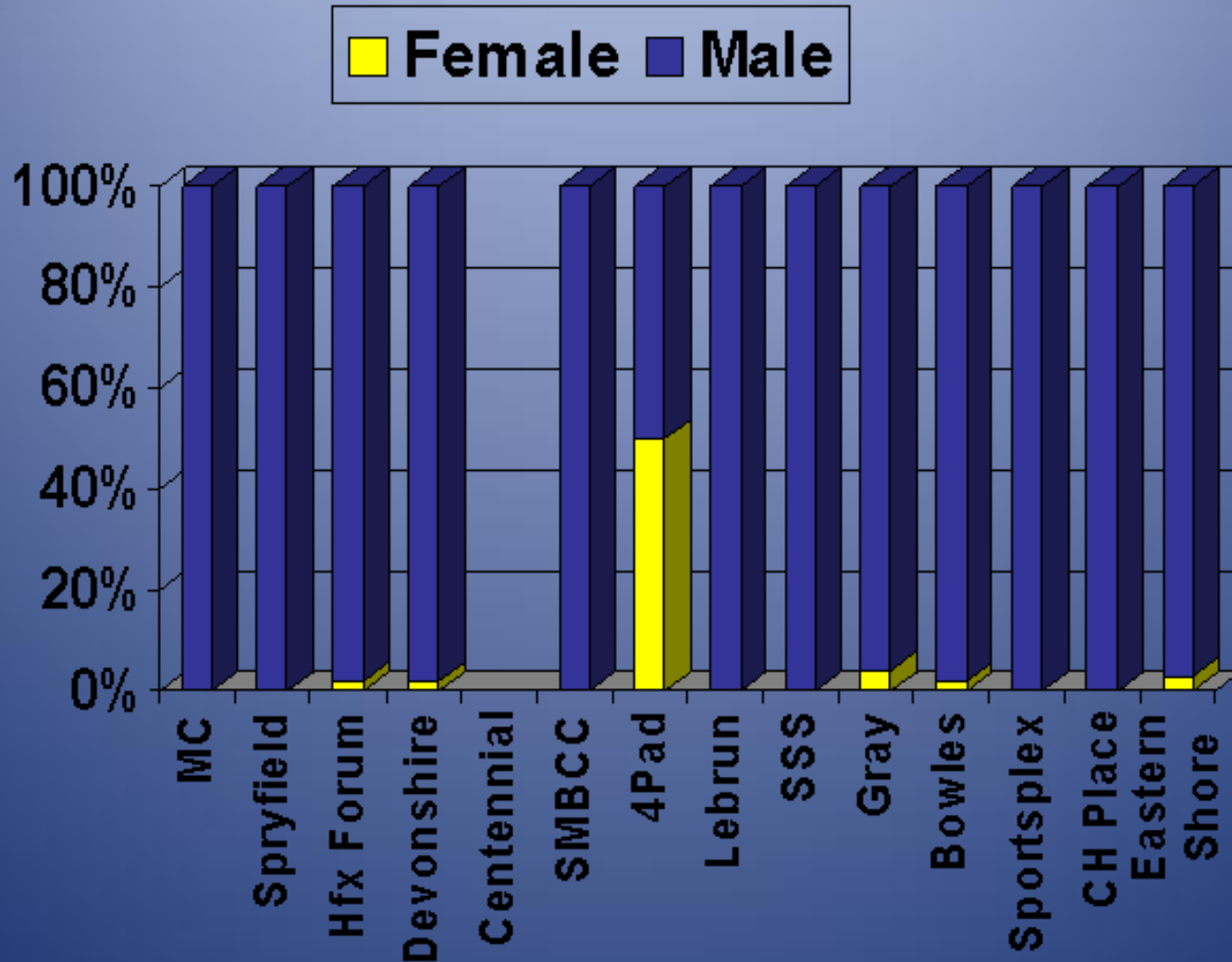
## Multi Pad Benefits

- Convenience
- Excitement
- Synergy
- Business Centres
- Cost effective capital
- Economies of Scale
  - Operations and management

## Single Pad Benefits

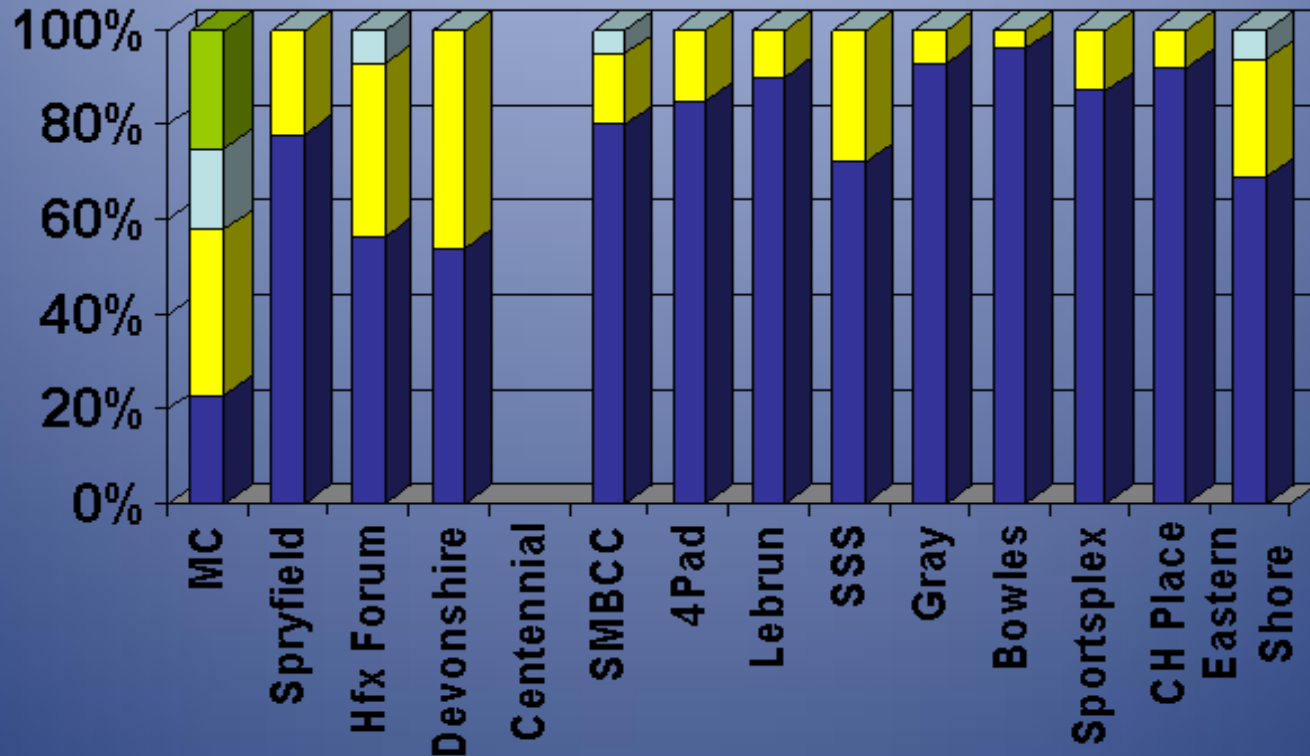
- Neighbourhood focus

# Adult Prime Time Analysis: Male vs Female



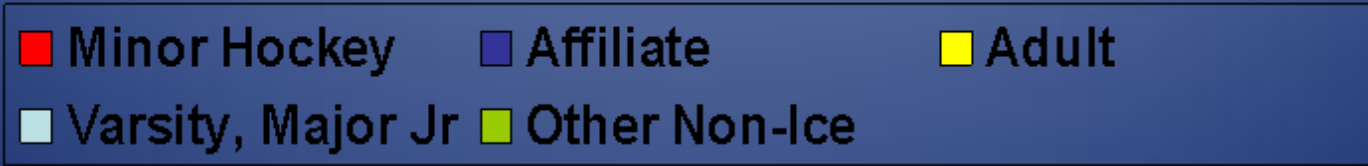
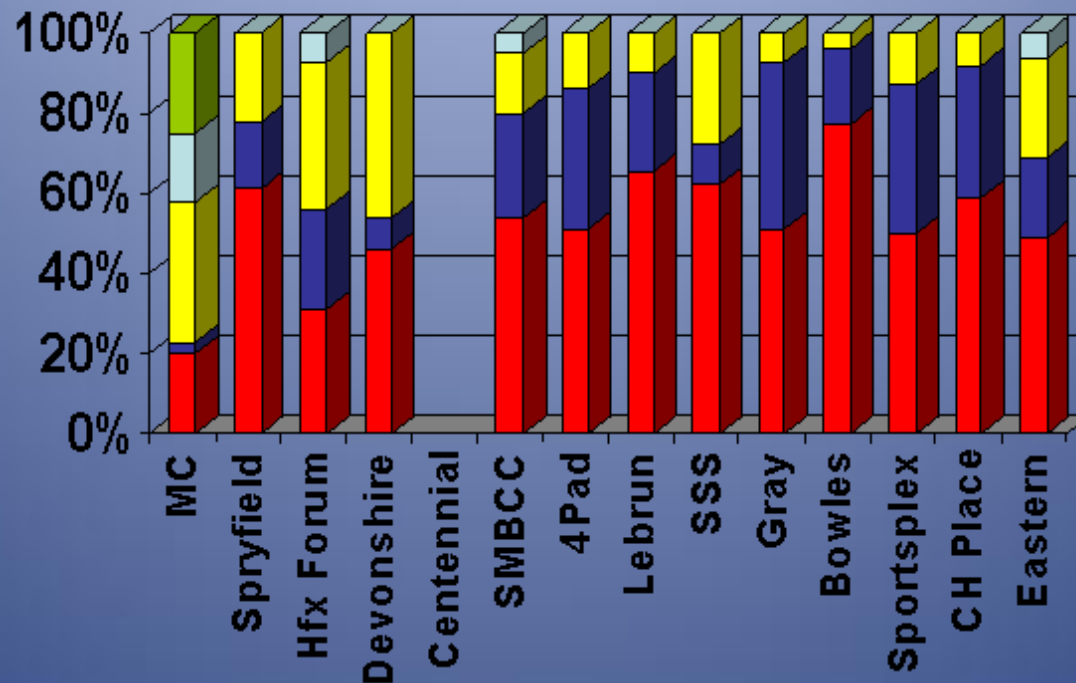
# Adult vs Affiliates

■ Affiliate 
 ■ Adult 
 ■ Varsity, Major Jr 
 ■ Other Non-Ice



Adult allocation at other HRM arenas ranges from 4% to 46% with average 22%  
 BMO Centre is currently 15%

# Prime Time Minor Hockey Allocation vs Others



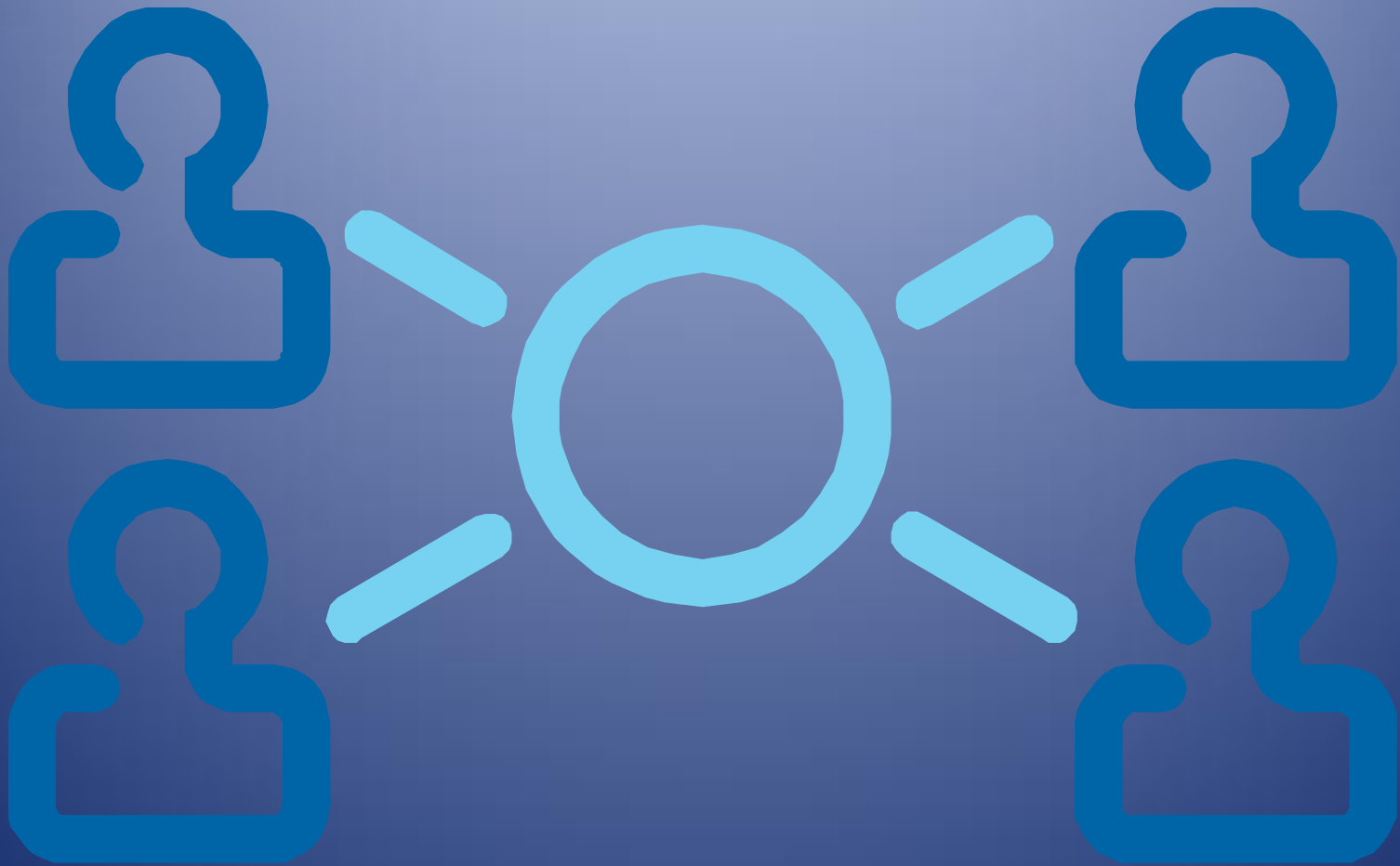
# Regional Ice Allocation Policy

- Why do municipalities steer away from developing region – wide ice allocation policies?
- Controversial
- Challenges the status quo

# Why Future Regional Ice Allocation Policy

- Why do municipalities adopt region – wide ice allocation policies?
- Ethical
- Legal
- Logistical

# Central Booking / Scheduling



# Discussion

