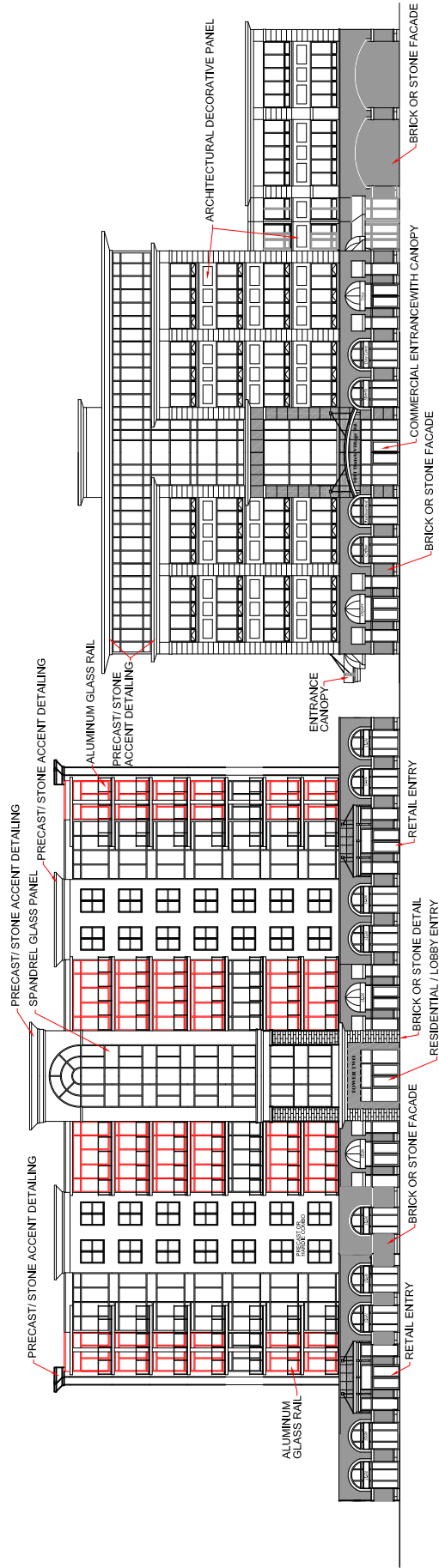


(ALL UNDEPICTED ELEVATIONS TO HAVE SIMILAR FINISHES)



PROPOSED MIXED-USE DEVELOPMENT
3620 DUTCH VILLAGE ROAD
HALIFAX

EAST ELEVATION

UNITED GULF DEVELOPMENTS LIMITED

380 Bedford Highway
Halifax, Nova Scotia
Canada B3W 2L4
Tel: (902) 493-3070
Fax: (902) 832-1752

Plan No. 01254-005

(ACTUAL GROUND FLOOR FACADE WILL DEPEND ON ACTUAL USES AND WILL BE DETERMINED DURING DETAILED DESIGN STAGE BUT WILL HAVE SIMILAR FINISHES AND DETAILS AS THE REST OF THE BUILDING)



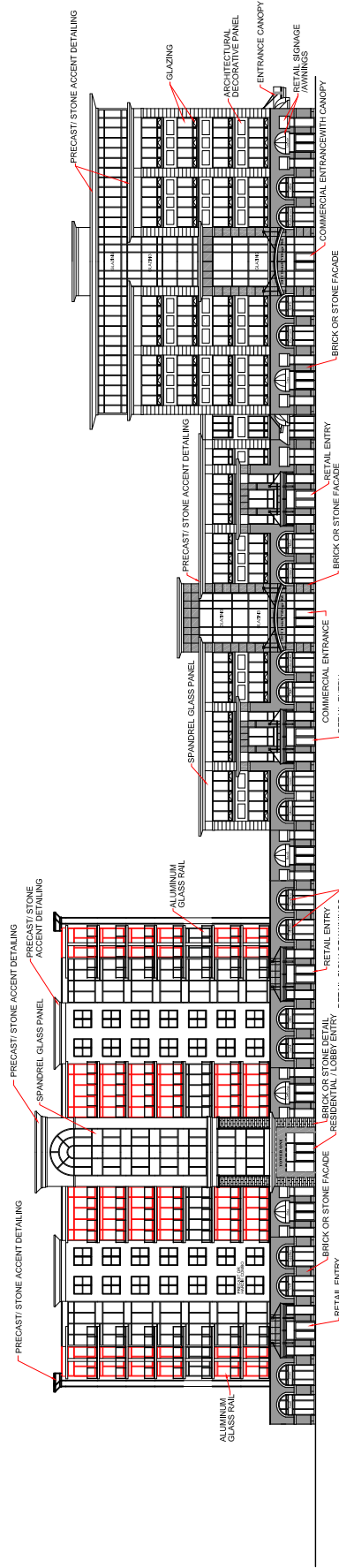
PROPOSED MIXED-USE DEVELOPMENT
3620 DUTCH VILLAGE ROAD
HALIFAX

NORTH SIDE ELEVATION
 Plan No. 01254-006

UNITED GULF DEVELOPMENTS LIMITED

380 Bedford Highway
 Halifax, Nova Scotia
 Canada B3M 2L4
 Tel: (902) 493-3070
 Fax: (902) 832-1752

(ALL UNDEPICTED ELEVATIONS TO HAVE SIMILAR FINISHES)



PROPOSED MIXED-USE DEVELOPMENT
 3620 DUTCH VILLAGE ROAD
 HALIFAX

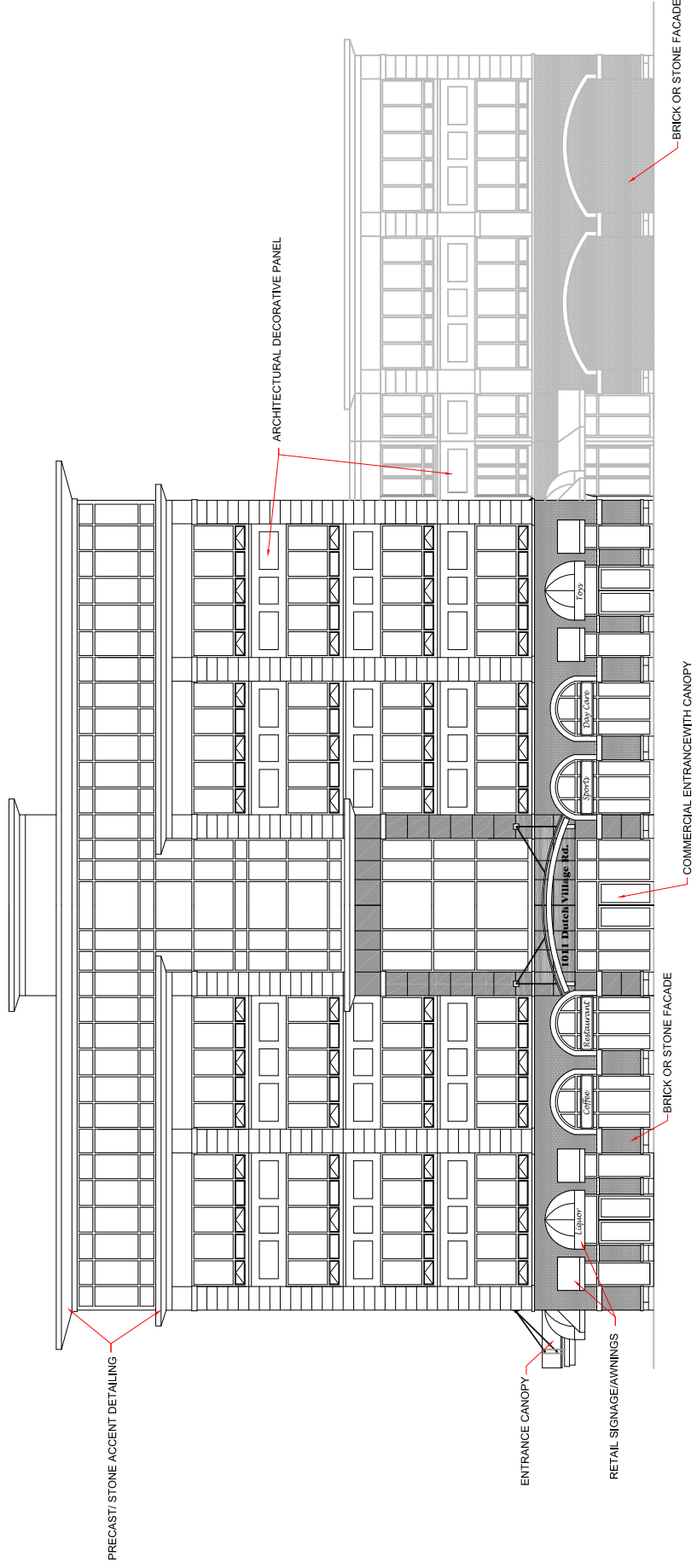
SOUTH ELEVATION
 Plan No. 01254-007

UNITED GULF DEVELOPMENTS LIMITED

380 Bedford Highway
 Halifax, Nova Scotia
 Canada B3M 2L4
 Tel: (902) 493-3070
 Fax: (902) 832-1752

(ALL UNDEPICTED ELEVATIONS TO HAVE SIMILAR FINISHES)

BUILDING A



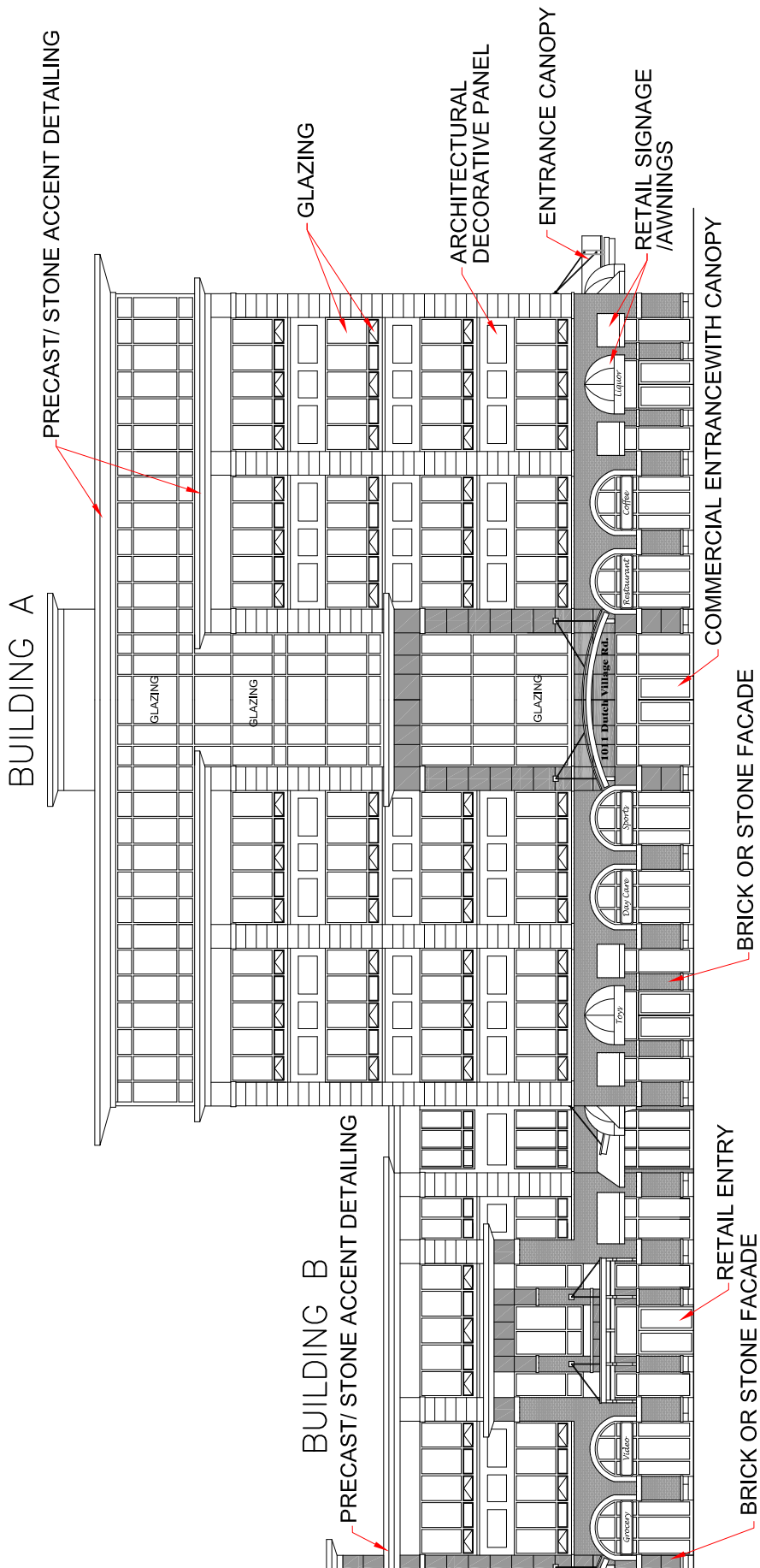
PROPOSED MIXED-USE DEVELOPMENT
 3620 DUTCH VILLAGE ROAD
 HALIFAX

BUILDING A
 OFFICE BUILDING
 DUTCH VILLAGE ROAD ELEVATION
 Plan No. 01254-008

UNITED GULF DEVELOPMENTS LIMITED

380 Bedford Highway
 Halifax, Nova Scotia
 Canada B3M 2L4
 Tel: (902) 493-3070
 Fax: (902) 832-1752

(ALL UNDEPICTED ELEVATIONS TO HAVE SIMILAR FINISHES)



BUILDING A
OFFICE BUILDING
COURTYARD ELEVATION

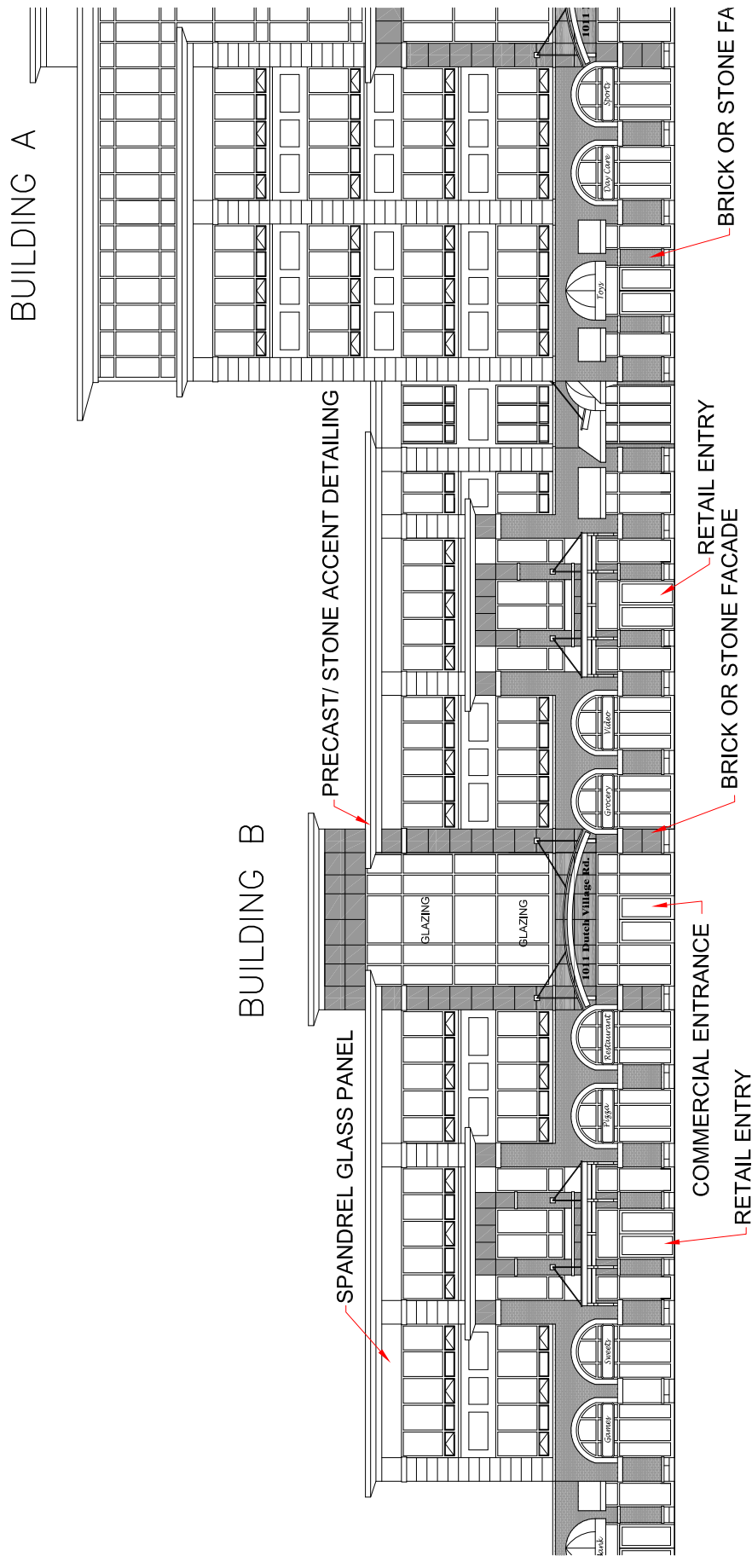
PROPOSED MIXED-USE DEVELOPMENT
3620 DUTCH VILLAGE ROAD
HALIFAX

Plan No. 01254-009

UNITED GULF DEVELOPMENTS LIMITED

380 Bedford Highway
 Halifax, Nova Scotia
 Canada B3M 2L4
 Tel: (902) 493-3070
 Fax: (902) 832-1752

(ALL UNDEPICTED ELEVATIONS TO HAVE SIMILAR FINISHES)



BUILDING B
 COMMERCIAL LOW RISE
 COURTYARD ELEVATION

PROPOSED MIXED-USE DEVELOPMENT
 3620 DUTCH VILLAGE ROAD
 HALIFAX

Plan No. 01254-010

UNITED GULF DEVELOPMENTS LIMITED

380 Bedford Highway
 Halifax, Nova Scotia
 Canada B3M 2L4
 Tel: (902) 493-3070
 Fax: (902) 832-1752

(ALL UNDEPICTED ELEVATIONS TO HAVE SIMILAR FINISHES)



PROPOSED MIXED-USE DEVELOPMENT
 3620 DUTCH VILLAGE ROAD
 HALIFAX
 BUILDING C
 TOWER 1
 FRONT ELEVATION

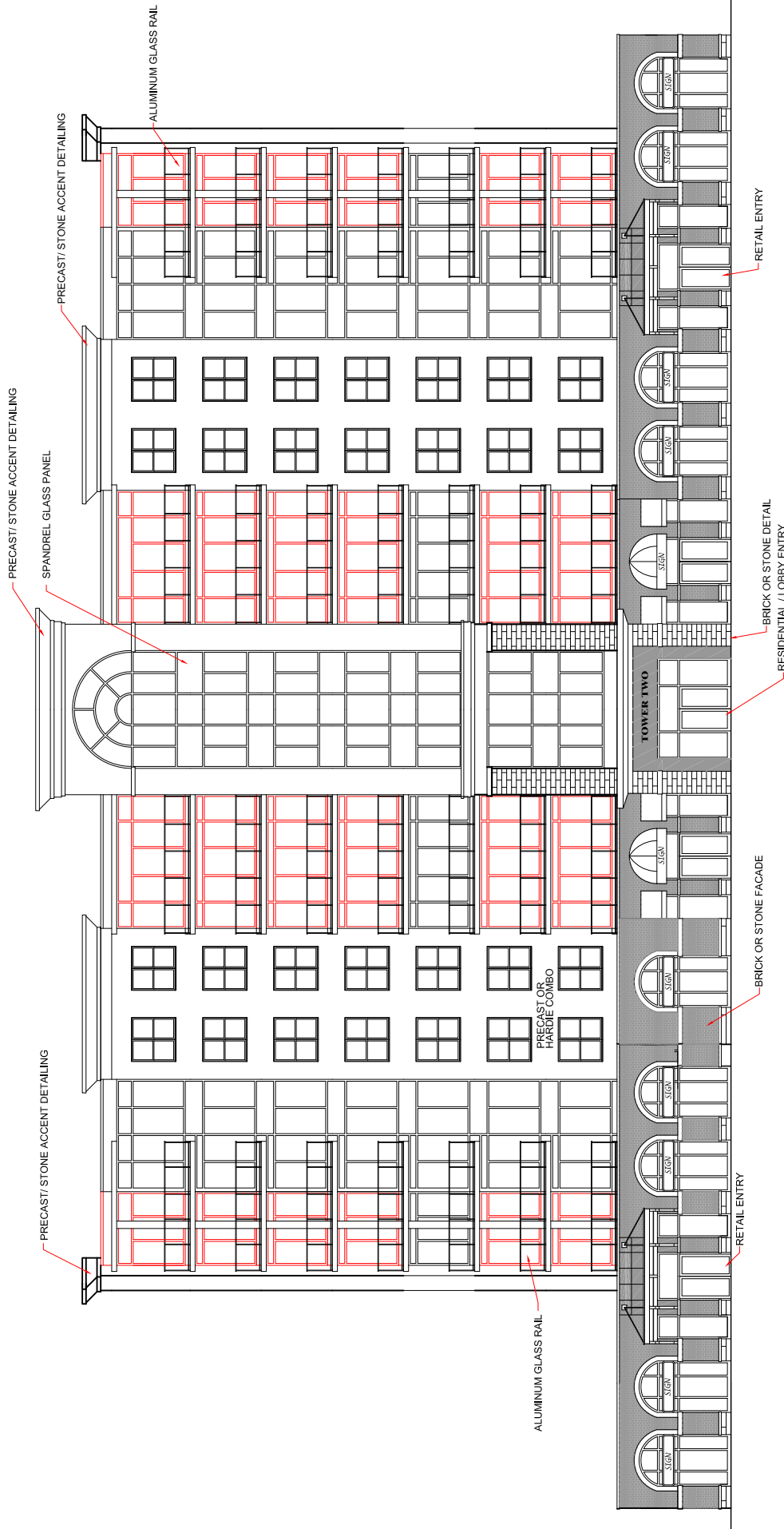
UNITED GULF DEVELOPMENTS LIMITED

380 Bedford Highway
 Halifax, Nova Scotia
 Canada B3M 2L4
 Tel: (902) 493-3070
 Fax: (902) 832-1752

Plan No. 01254-011

(ALL UNDEPICTED ELEVATIONS TO HAVE SIMILAR FINISHES)

BUILDING D



PROPOSED MIXED-USE DEVELOPMENT
 3620 DUTCH VILLAGE ROAD
 HALIFAX

BUILDING D
 TOWER 2
 FRONT ELEVATION

UNITED GULF DEVELOPMENTS LIMITED

380 Bedford Highway
 Halifax, Nova Scotia
 Canada B3M 2L4
 Tel: (902) 493-3070
 Fax: (902) 832-1752

Plan No. 01254-012