



WM FARES  
GROUP

- THE **WILLOW TREE** TOWER -



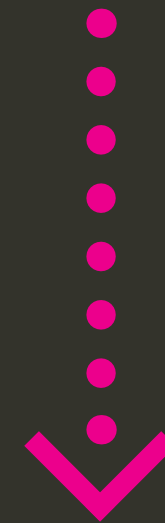
A SENSE OF PLACE

A SENSE OF IDENTITY



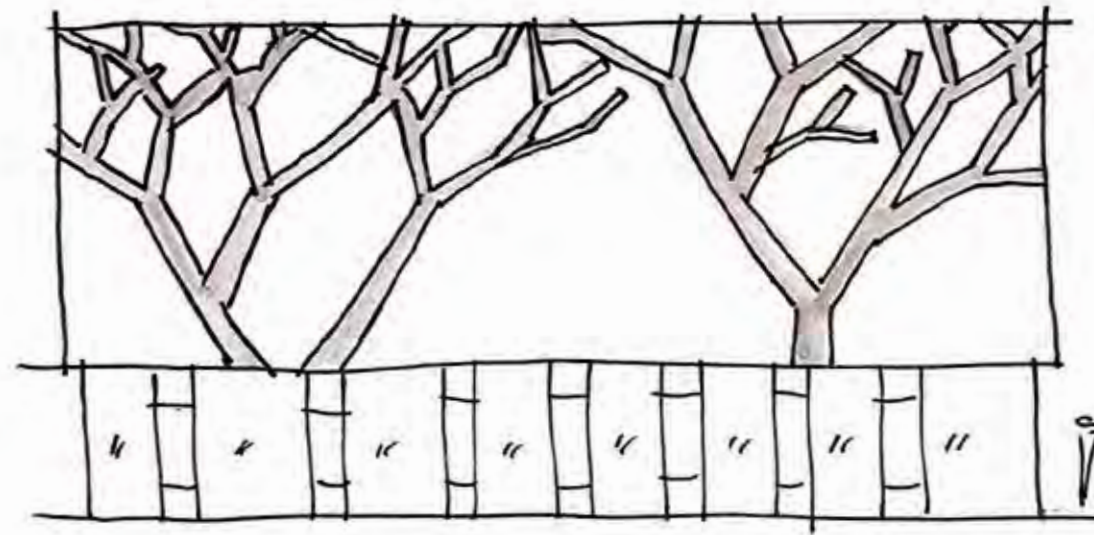
former **willow tree** at the Quinpool & Robie intersection

**story** telling is the metaphysical manifestation of a former sense of **place**

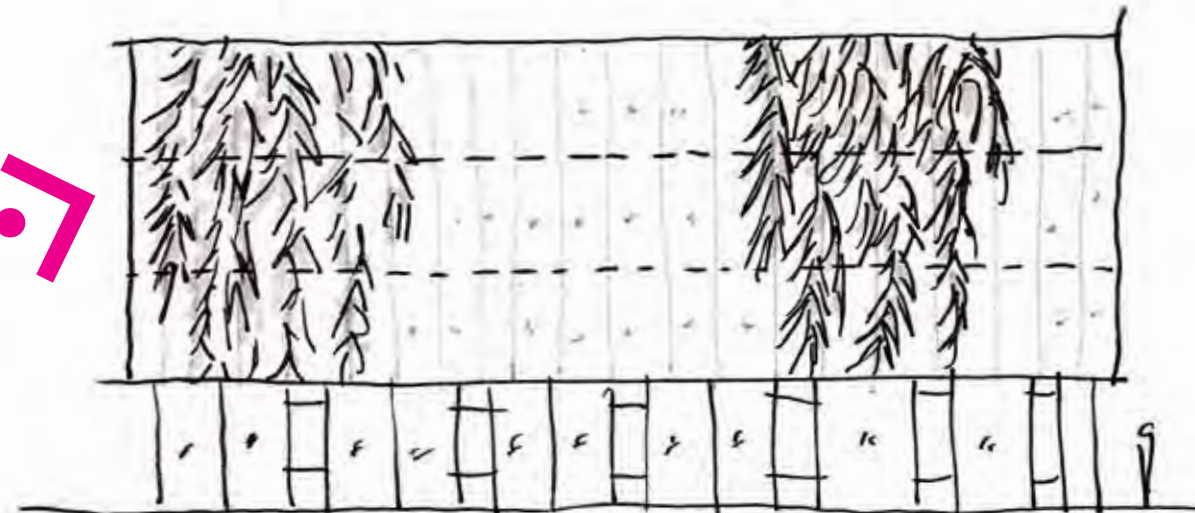


willow tree = **emblem** of place and neighbourhood identity

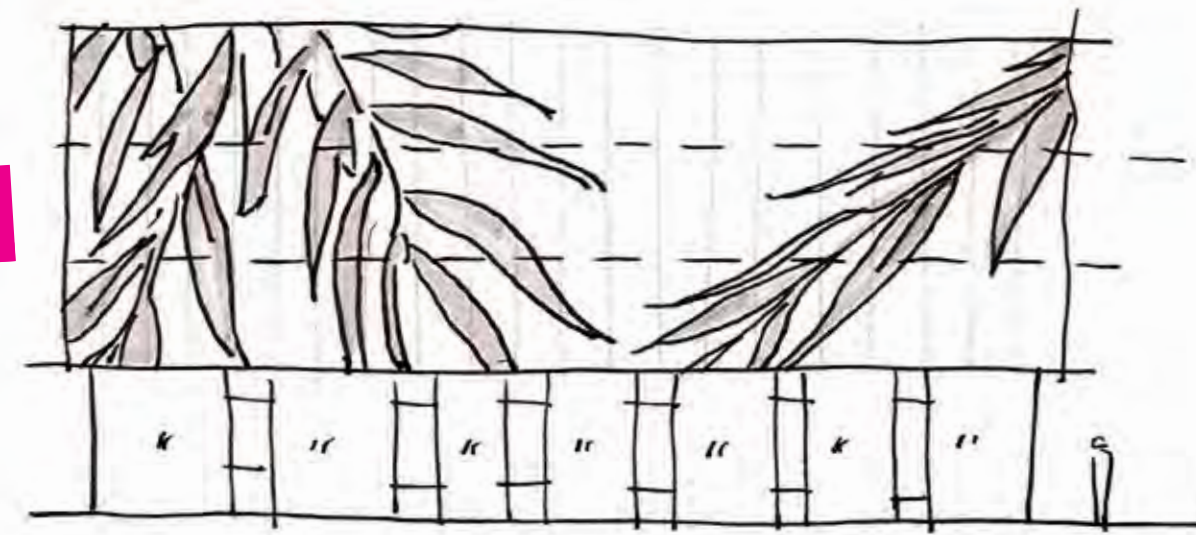
willow tree  
as integrated pattern ?  
as screened facade ?



ABSTRACT  
TREE  
SILHOUETTE

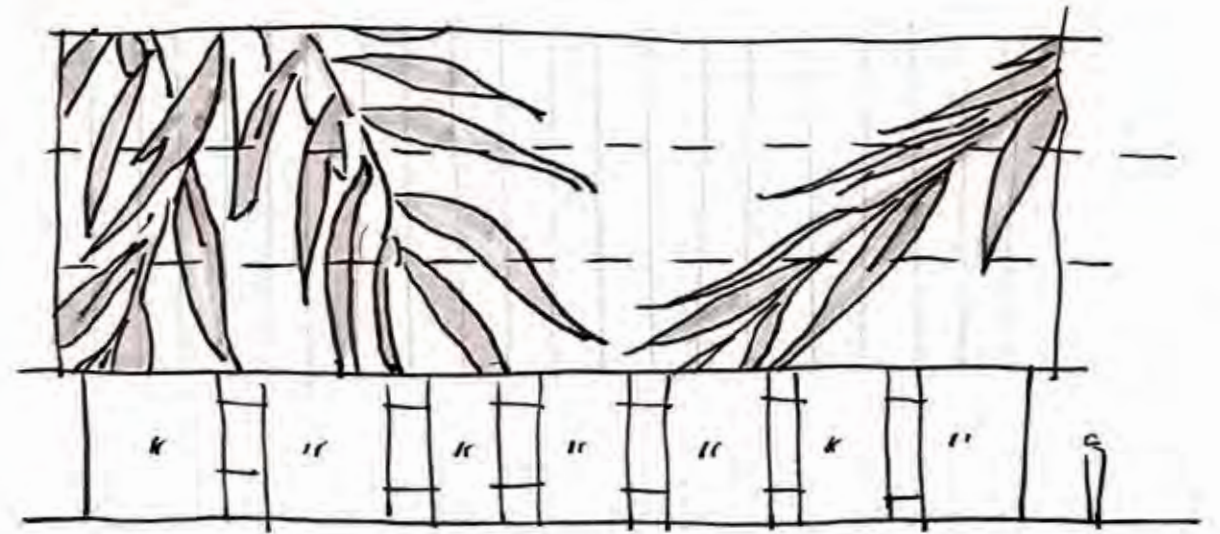


DELICATE  
PATTERN



SCALE  
SHIFT.  
—  
ABSTRACT.

building as civic **beacon**



# THE STREETWALL





TEA HOUSE

茶室

BLUE BURGER

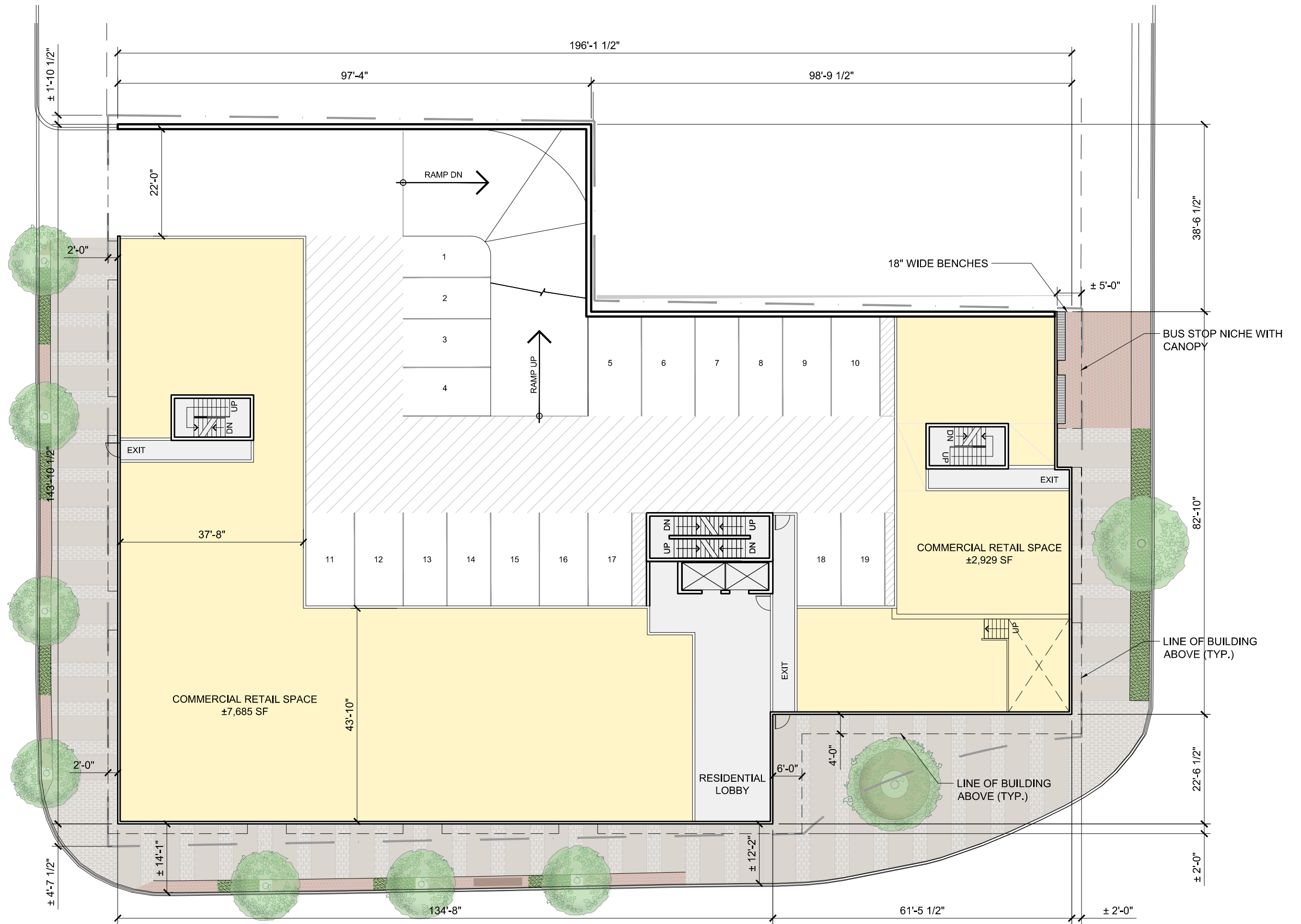
ABUELA'S

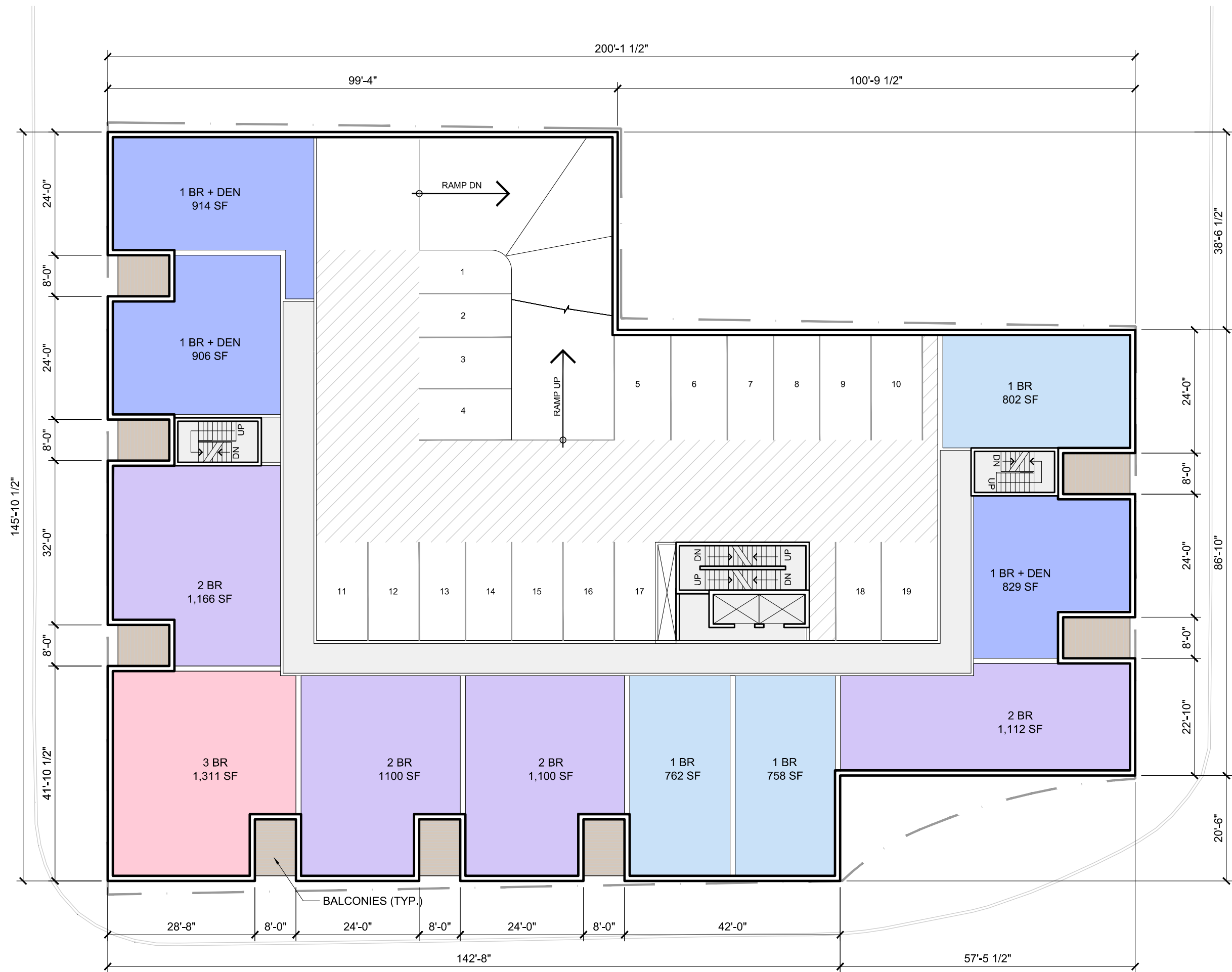




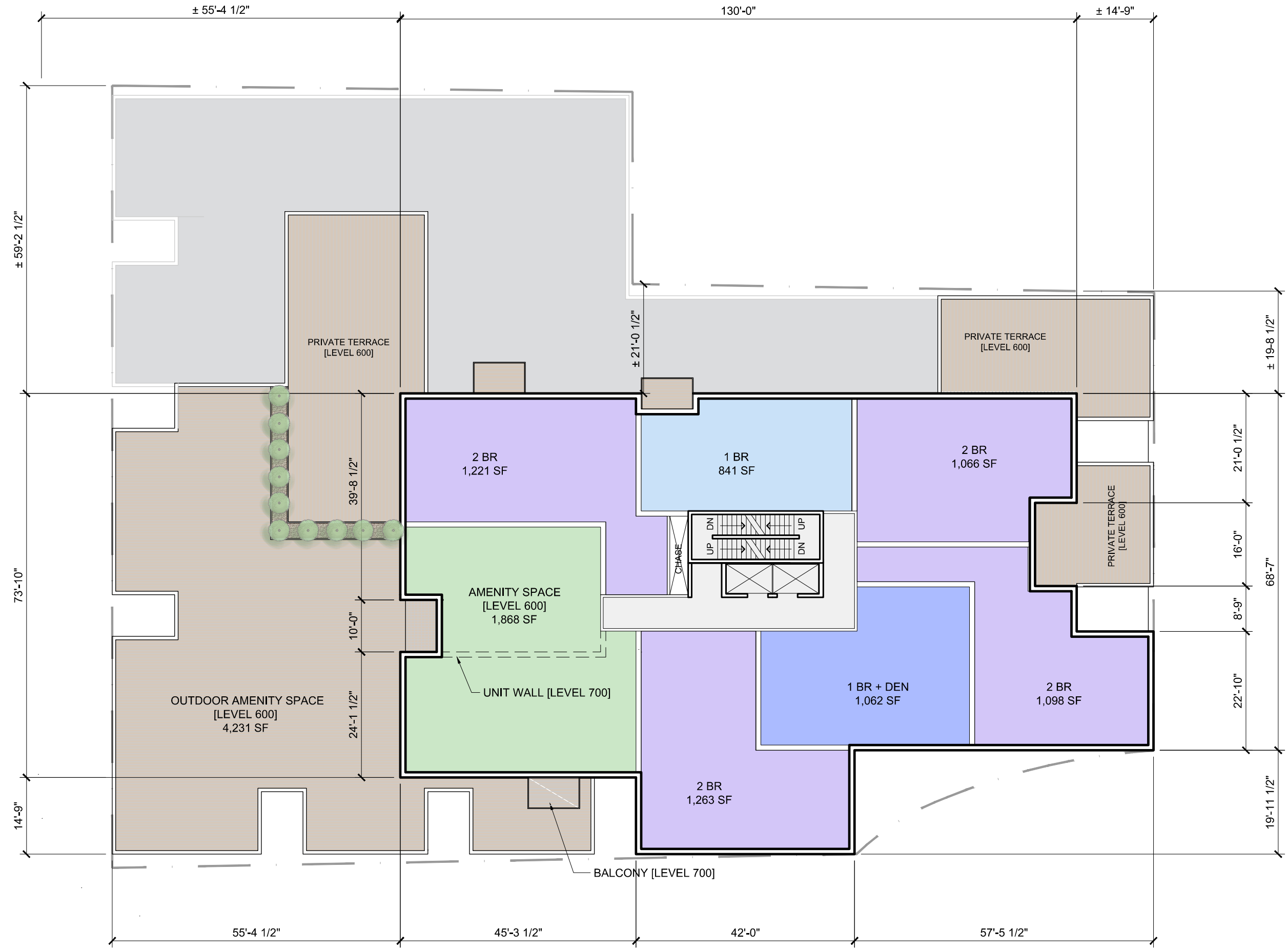


west streetwall elevation | windsor street / parker street

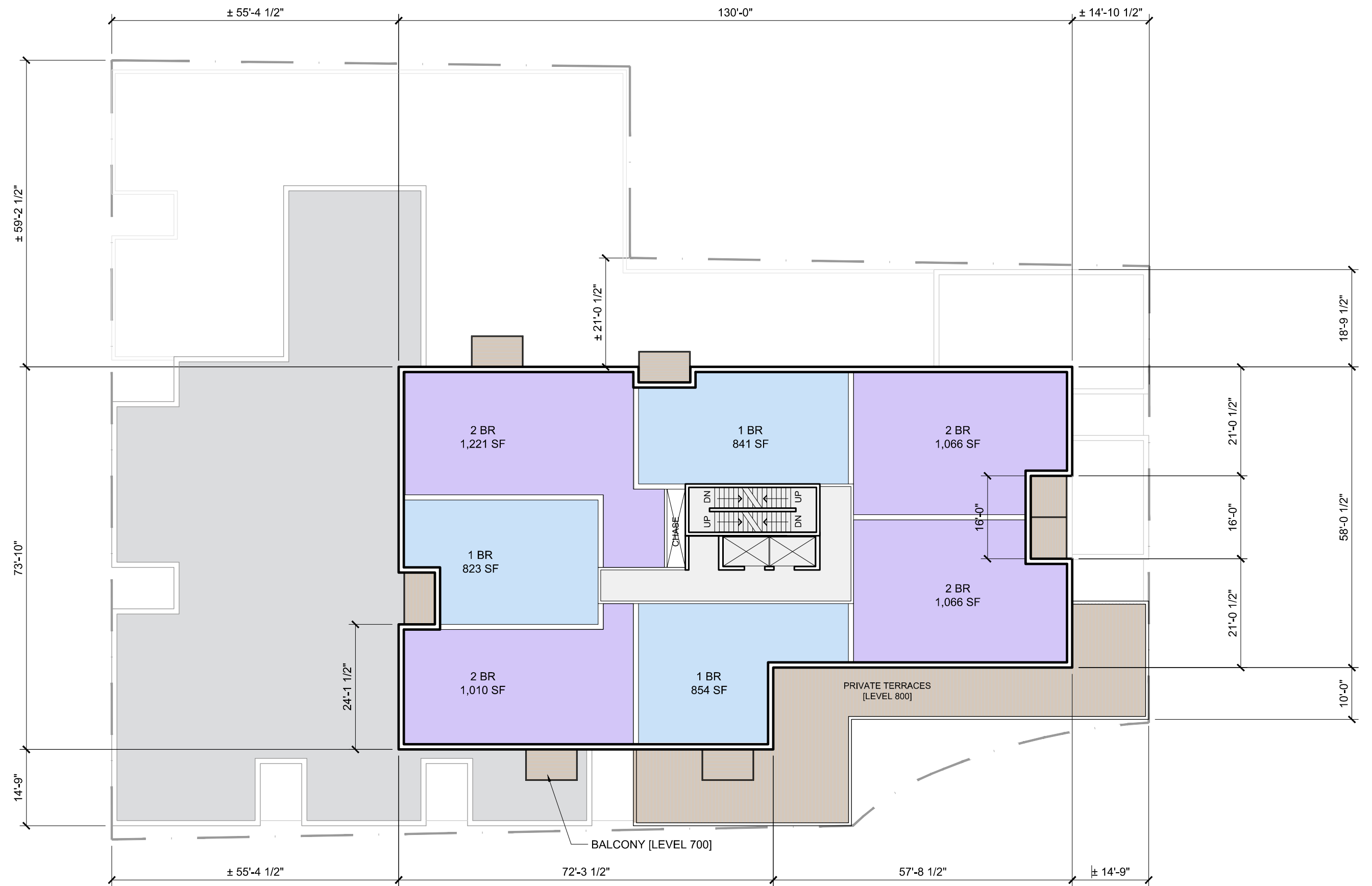


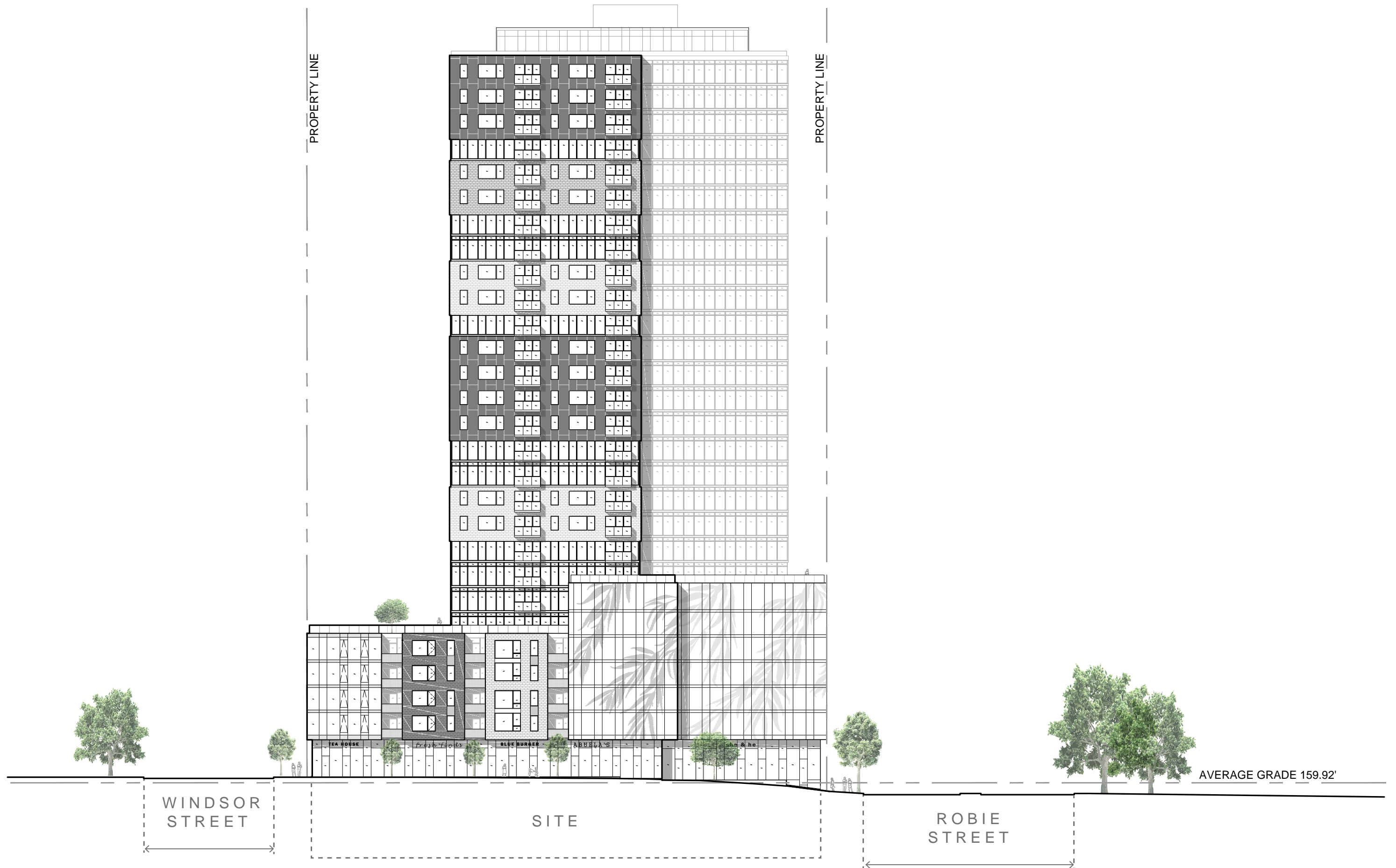


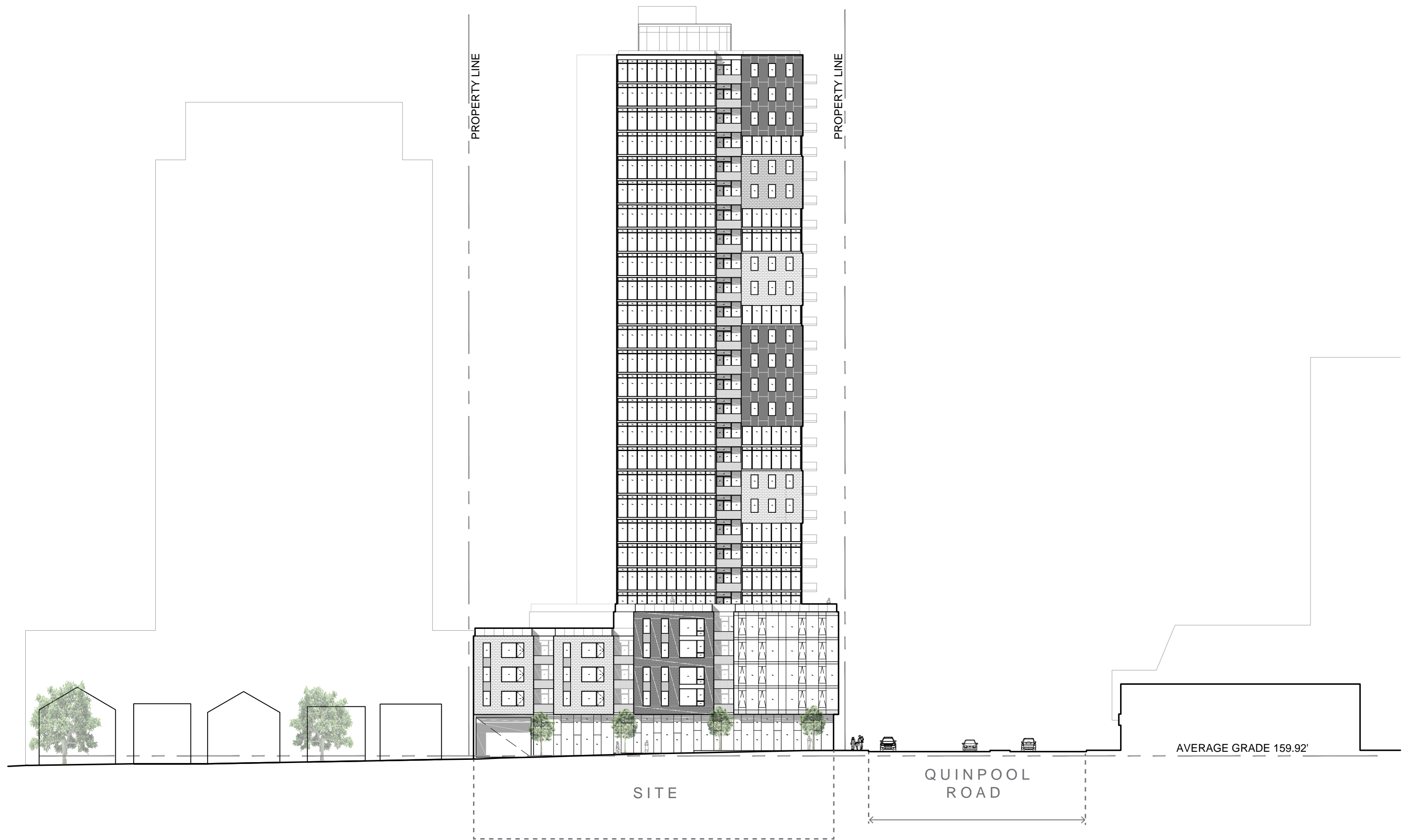
THE TOWER

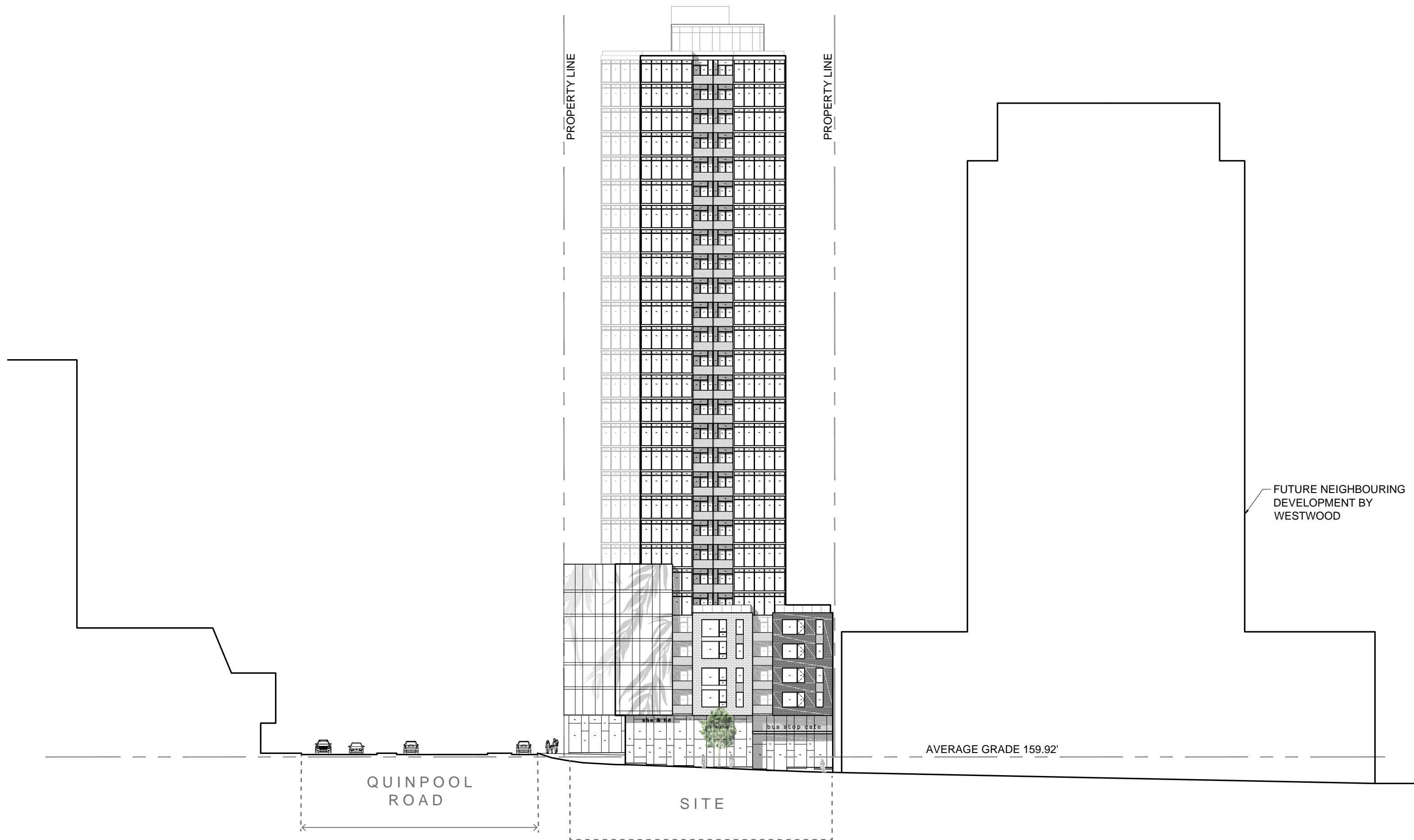














rendering | aerial view from **quinpool**



rendering | view from the **commons**

PROJECT DATA

# PROJECT DATA

Lot Area: 25,035 SF  
 Building Area: 22,922 SF  
 Site Coverage: 92%  
 No. of Floors: 29 storeys  
 No. of Units: +/- 209 units  
 Unit Types:  
 37% 1-Br  
 7% 1-Br + Den  
 53% 2-Br  
 7% 3-br  
 Commerical Area: 10,614 SF  
 Outdoor Amenity Area: 4,231 SF  
 No. of Parking: +/- 199

