



VEHICLE / PEDESTRIAN COLLISIONS

HRM: January - December 2016

DISCLAIMER: All figures presented in this report reflect the information held on HRP systems at the time of data extraction and are subject to change without notice.

Summary

- 266 vehicle/pedestrian/bicycle collisions were **reported** in January-December 2016 in Halifax Regional Municipality.
- Of these collisions, 60 involved a bicycle.
- The remaining 206 incidents were strictly vehicle/pedestrian collisions, with 215 pedestrian victims.
- **TOTAL VEHICLE/PEDESTRIAN COLLISIONS IN HRM: 206**
- **TOTAL VEHICLE/PEDESTRIAN VICTIMS IN HRM: 215**
- **TOTAL VEHICLE/PEDESTRIAN COLLISIONS IN HRM IN December 2016: 23**

Note:

This report presents strictly vehicle/pedestrian collisions and excludes those incidents involving bicycles.

Snapshot

2016	
Month	# Incidents
January	22
February	17
March	11
April	13
May	9
June	13
July	16
August	12
September	18
October	27
November	25
December	23
TOTAL YTD	206

January - December 2016	
Type*	# SOTs
Driver	70
Pedestrian	6
Pending / SUI	-
No SOT	130
TOTAL	206

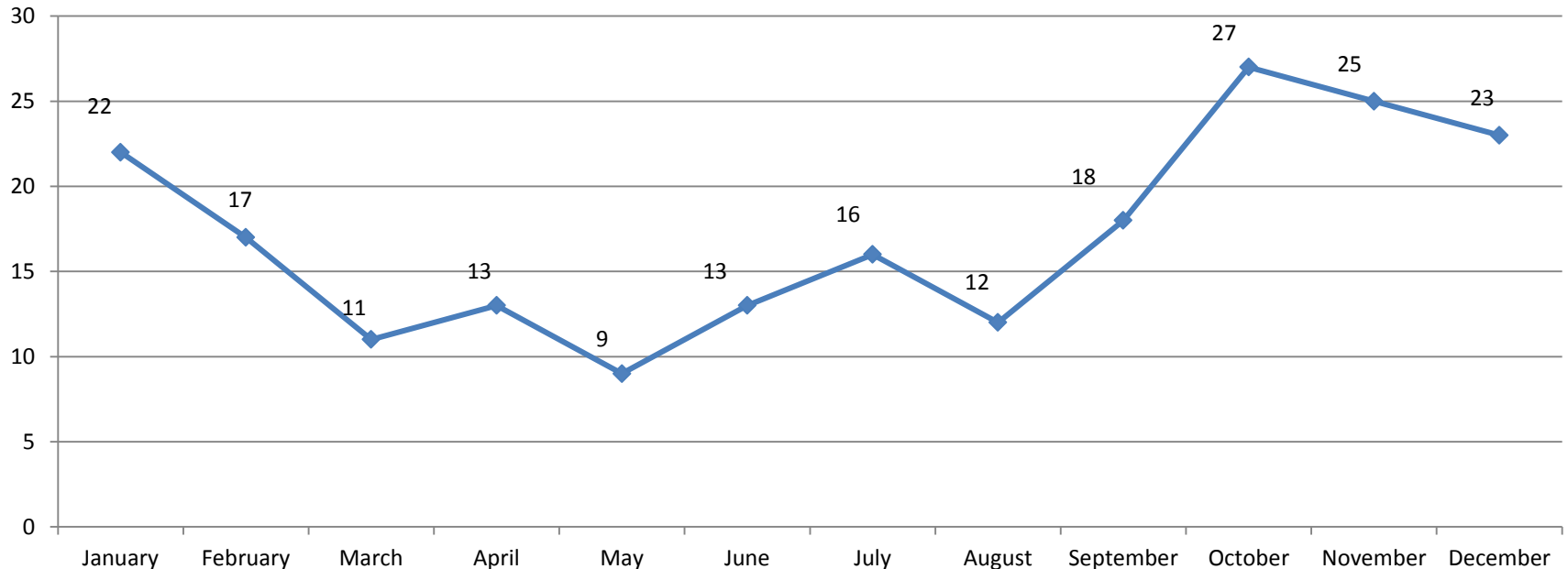
* Excludes SOTs unrelated to collision
(e.g., no insurance)

***One incident reported previously in January removed as code changed, investigation deemed incident was not a MV Pedestrian collision. This report contains an additional incident which occurred in March 2016 but was not recorded in prior reports*

Trends

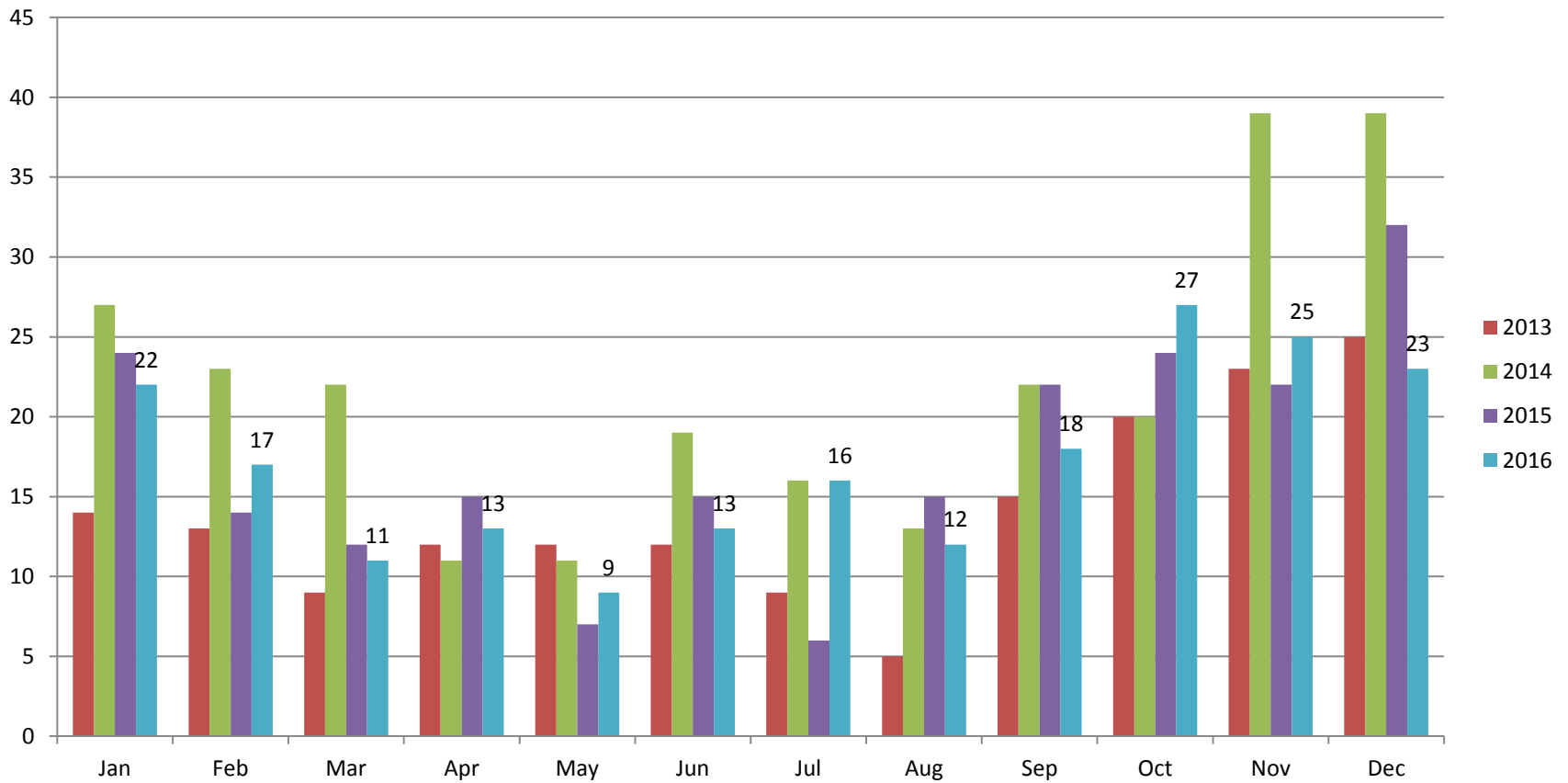
Vehicle/pedestrian collisions were on a downward trend from January to May 2016, increased from May to July and decreased again in August. In September and October a noted upward trend occurred with October having had the highest number of reported incidents this year. A slight decrease was again observed in November and December, 2016.

**Vehicle/Pedestrian Collisions
January - December 2016**



Trends

Vehicle/Pedestrian Collisions
2013-2016



Divisions & Districts

HRP

Central and East Divisions saw a reduction in the number of reported collisions in January-December 2016 compared to the same period in 2015 while West Division had an increase of twelve (12) incidents or 27.91% when compared to 2015. An overall decrease of 5.17% was noted in 2016 over 2015.

RCMP Halifax District

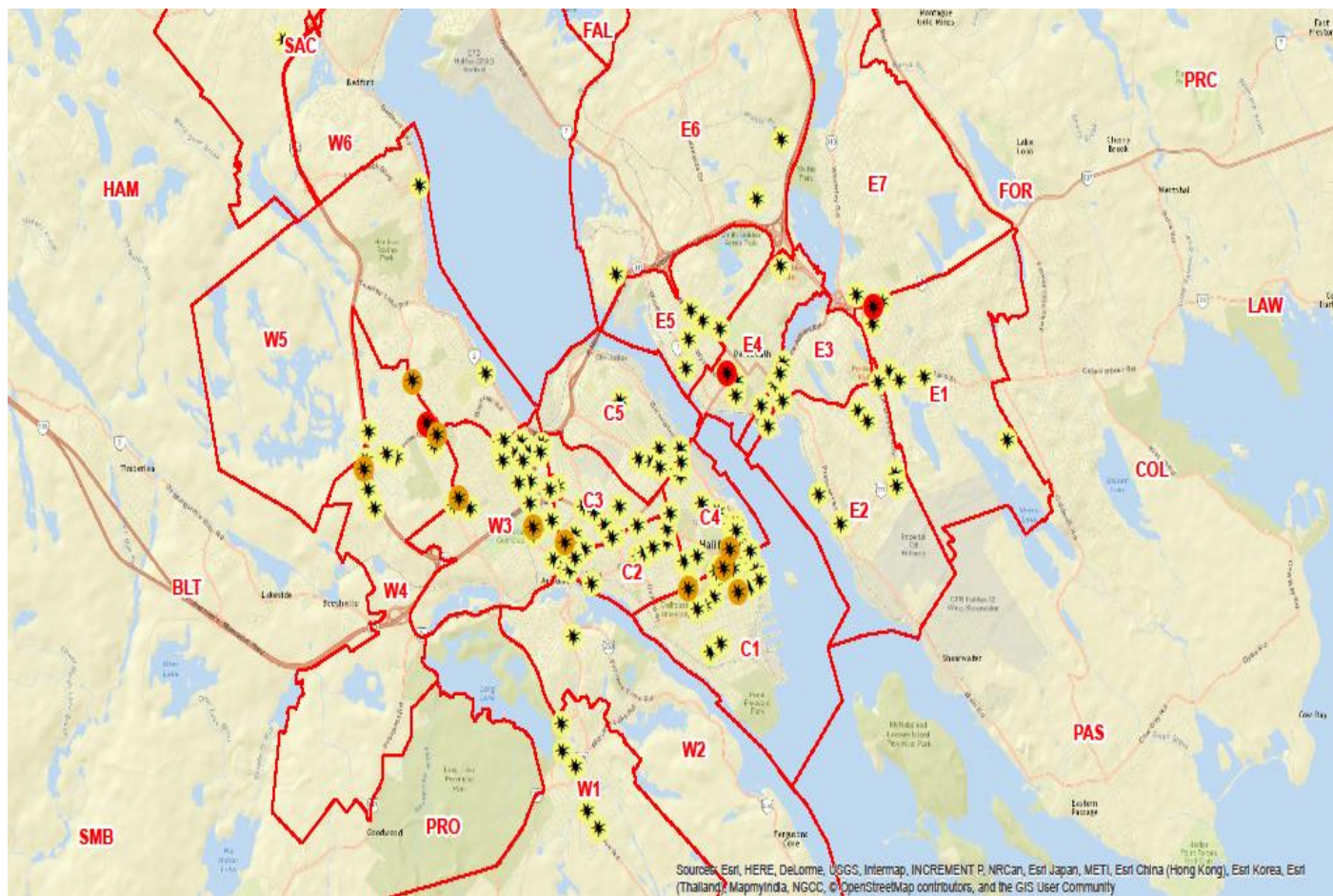
The number of collisions in the RCMP areas increased by 7 incidents or 20.59% in 2016 compared to 2015.

HRM

January-December 2016 saw a decrease of 2 incidents or 0.96% in HRM when compared to the same period in 2015.

January - December			
DIVISION/DISTRICT	2015	2016	Change
Central	81	71	↓
East	50	39	↓
West	43	55	↑
HRP	174	165	↓ 5.17%
Cole Harbour	5	13	↑
Sackville	24	22	↓
Musquodoboit Hbr.	2	3	↑
North Central	0	0	
Sheet Harbour	0	0	
Tantallon	3	3	-
RCMP	34	41	↑ 20.59%
HRM TOTAL	208	206	↓ 0.96%

HRP Area



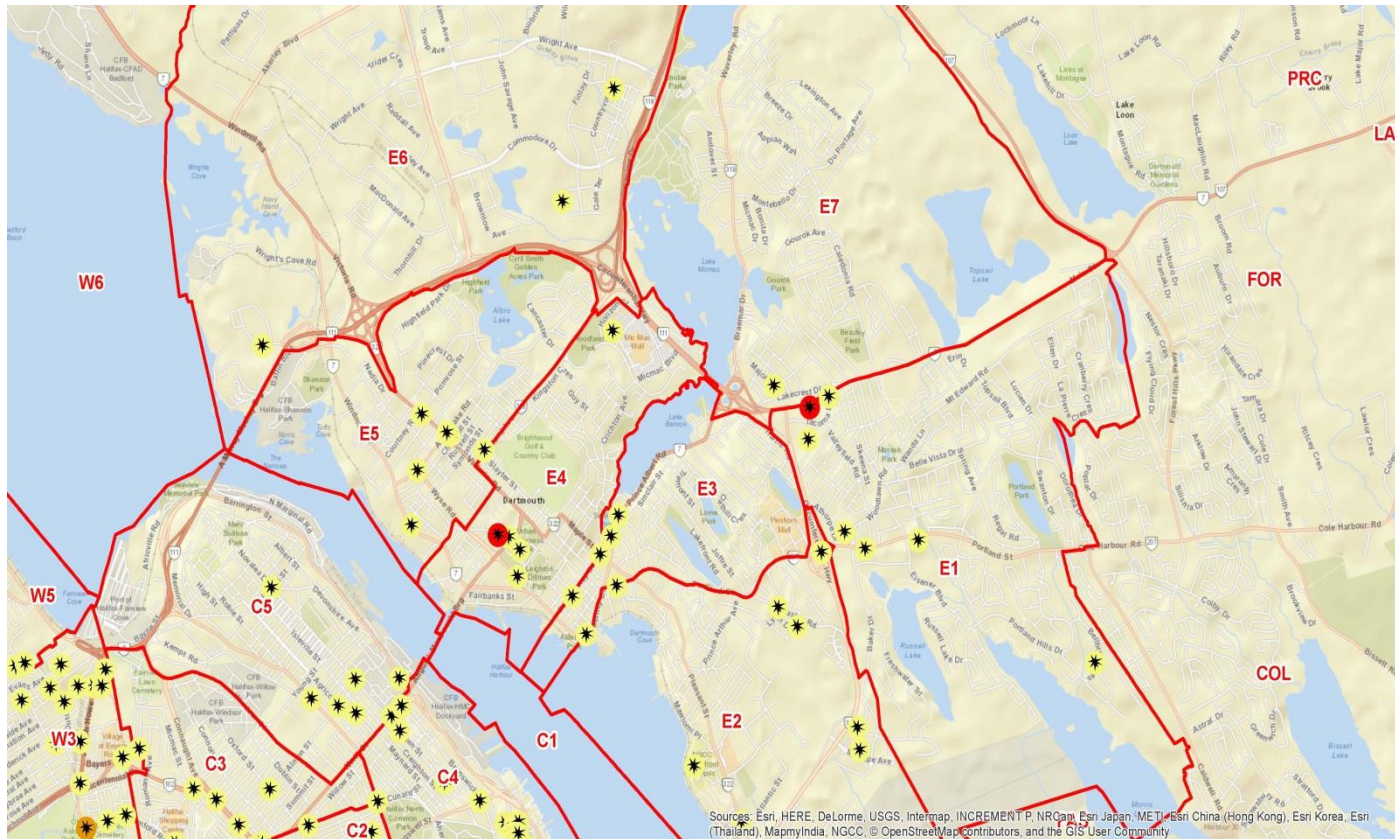
Central Division



LEGEND

- 1 incident
- 2 incidents
- 3 incidents
- 4 incidents
- 5 incidents

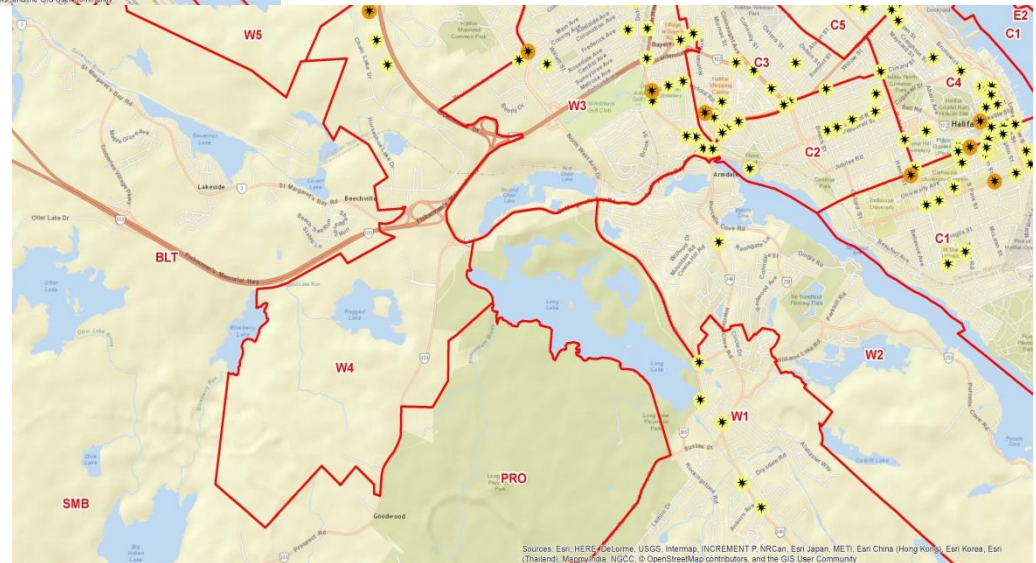
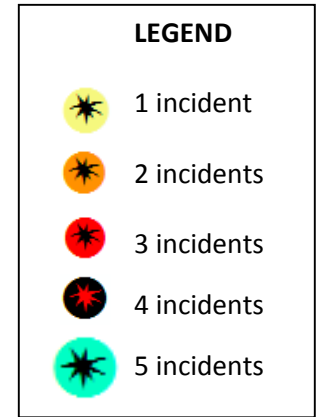
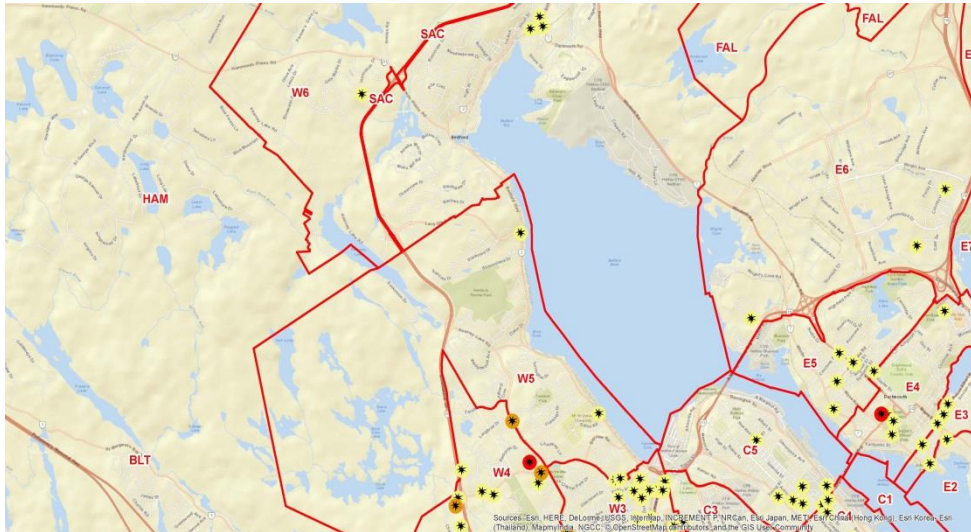
East Division



LEGEND

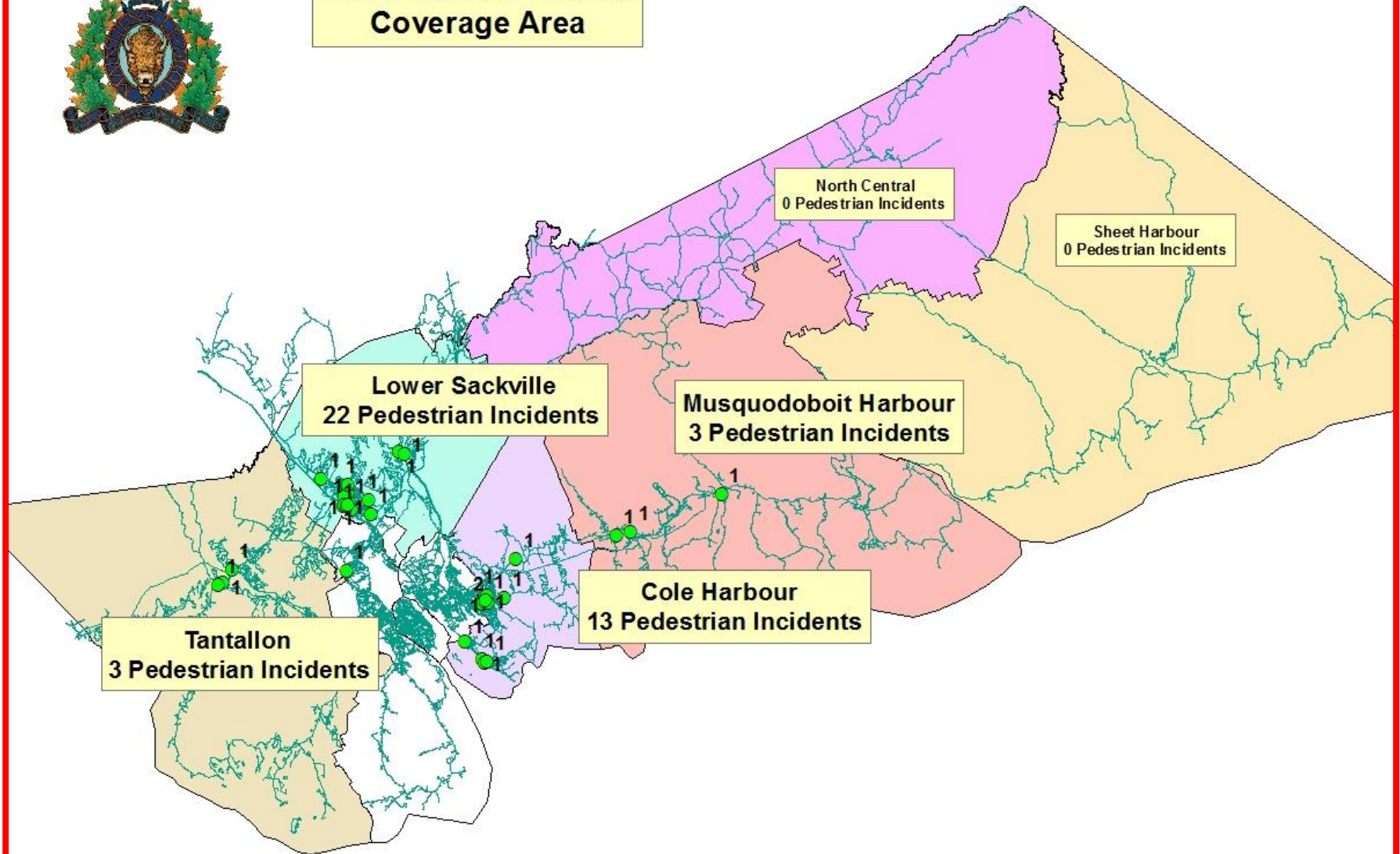
-  1 incident
-  2 incidents
-  3 incidents
-  4 incidents
-  5 incidents

West Division

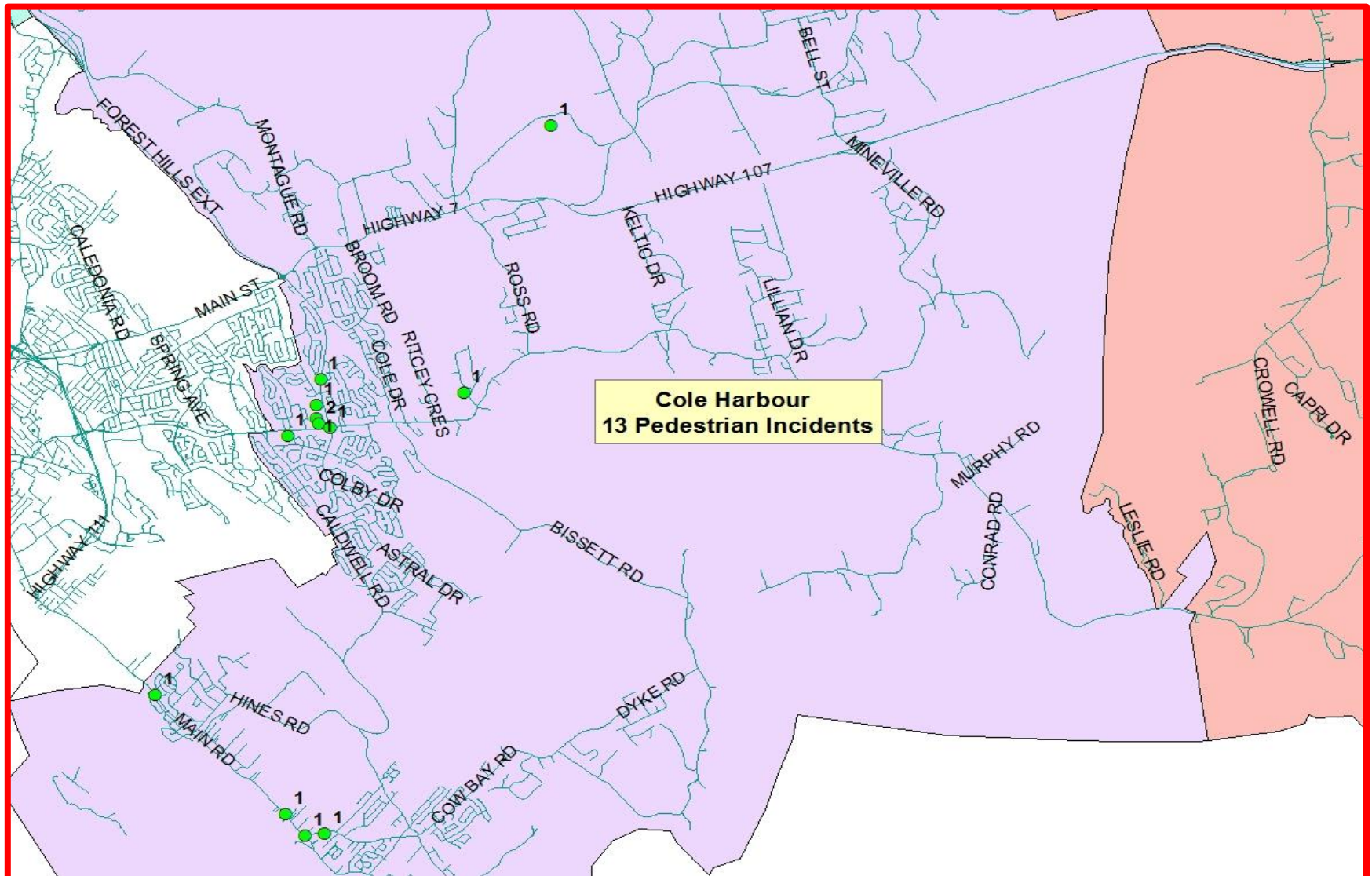




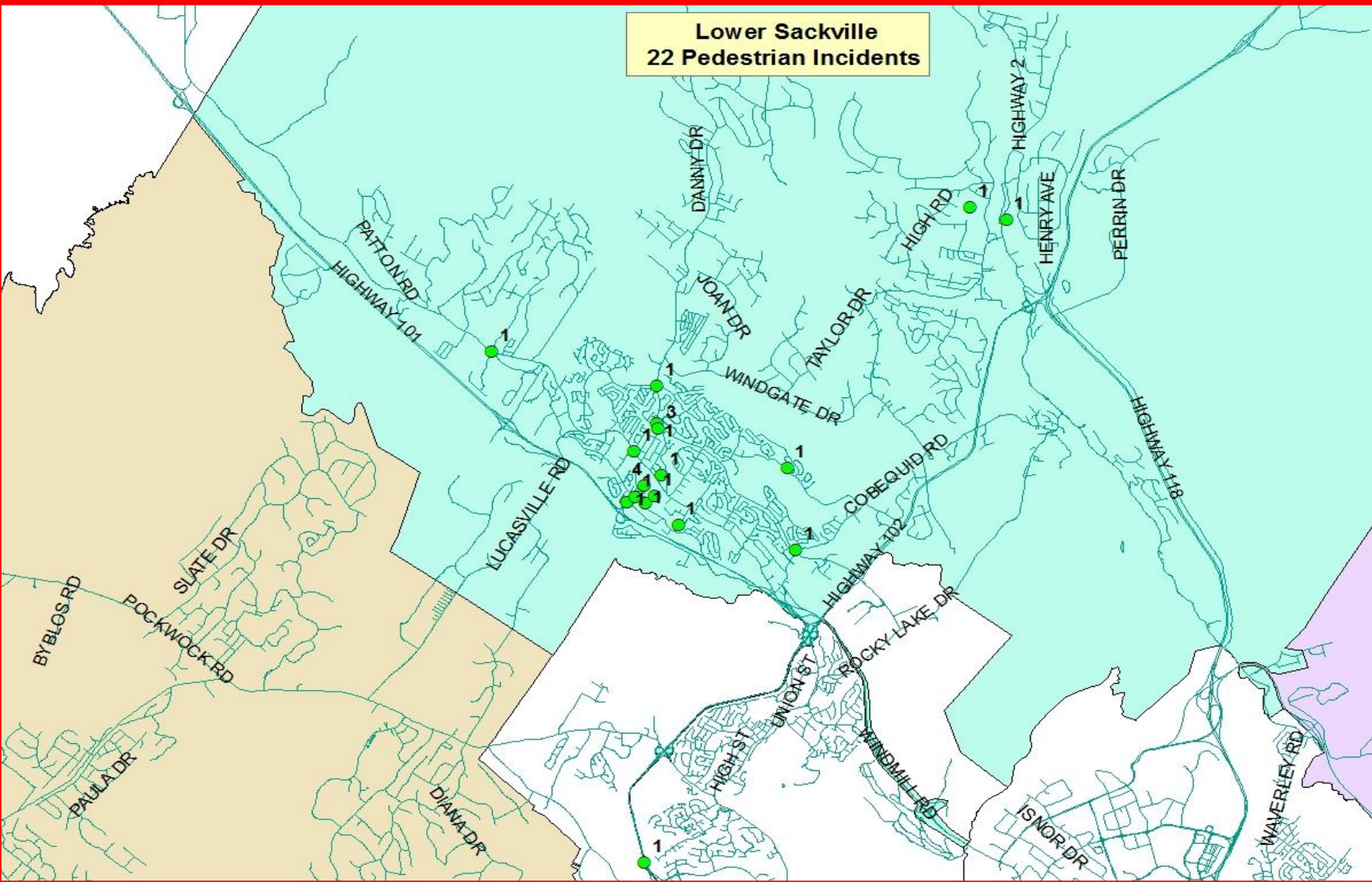
RCMP Halifax District Coverage Area



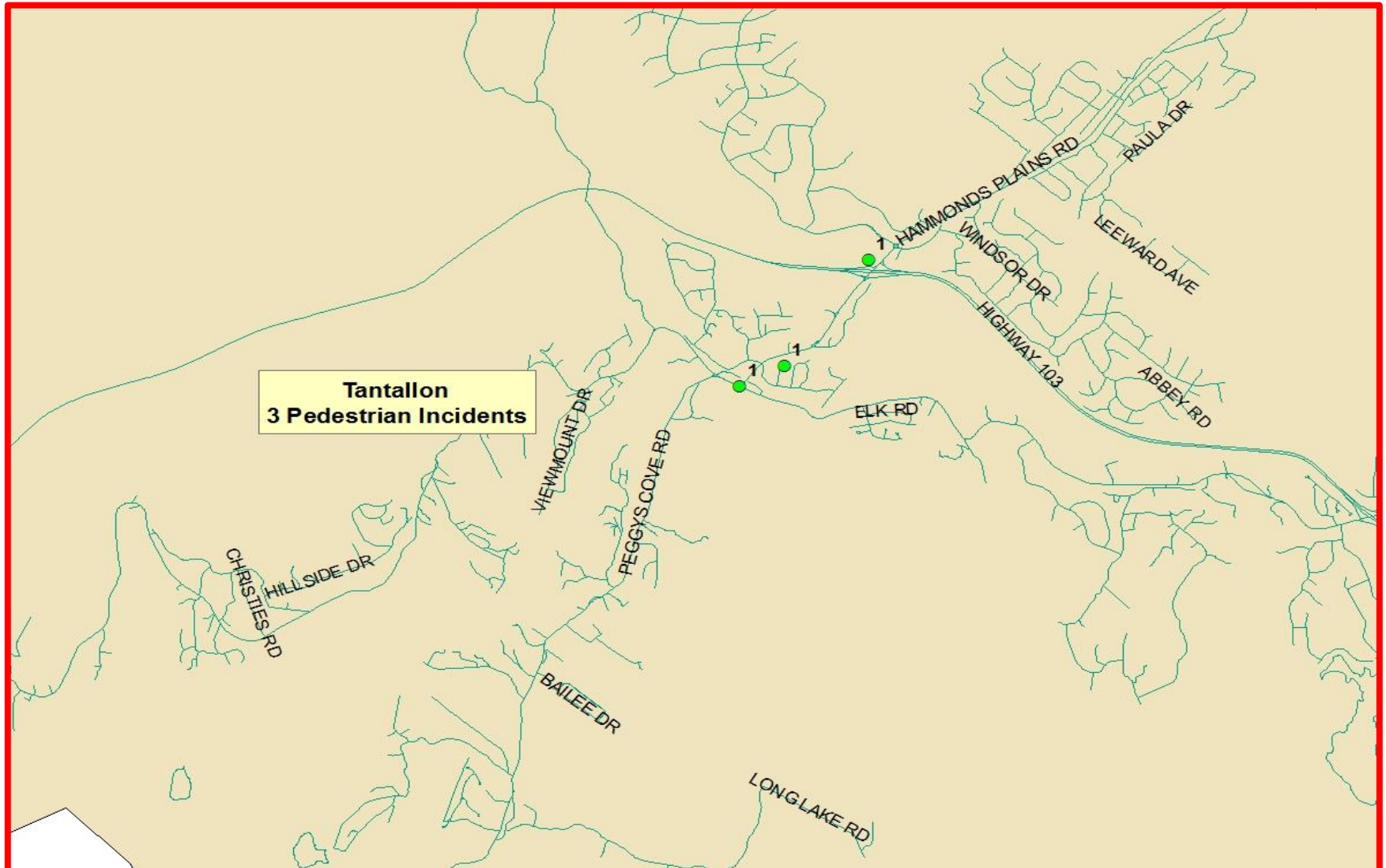
Cole Harbour



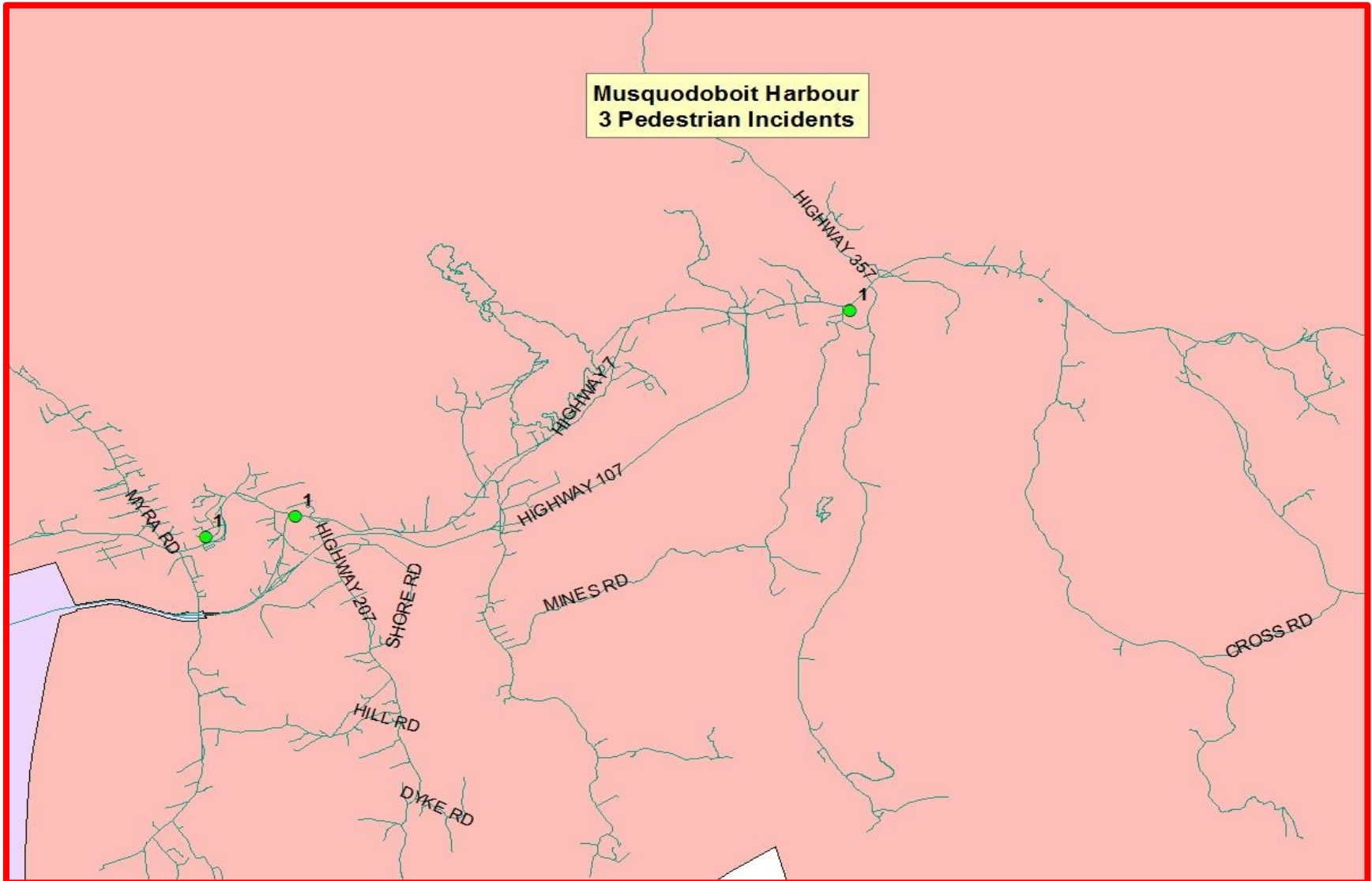
Sackville



Tantallon



Musquodoboit Harbour



Collision Types

A larger proportion of vehicle/pedestrian collisions took place in crosswalks in January - December 2016 compared to the previous year.

January-December 2016		
COLLISION TYPE	2015	2016
Crosswalks	122 (58.65%)	125 (60.68%)

The majority of incidents (50.24%) in January-December 2016 did not involve vehicles making either a left or right hand turn.

January-December 2016		
Turn Direction	#	%
Left	71	34.63%
Right	31	15.12%
No Turn	103	50.24%
Unknown	1	
TOTAL	206	

% rates exclude unknown cases

Injuries

80.93% of the 215 pedestrian victims experienced either no injury or minor injury in the reported incidents in January to December 2016.

HRM has had zero pedestrian fatalities so far this year.

No driver injuries were reported.

January - December 2016		
INJURY TYPE (PEDESTRIANS)	#	%
No Injury	70	32.56%
Minor	104	48.37%
Moderate	23	10.70%
Severe	5	2.33%
Fatality	0	0%
Unknown	13	6.05%
TOTAL	215	

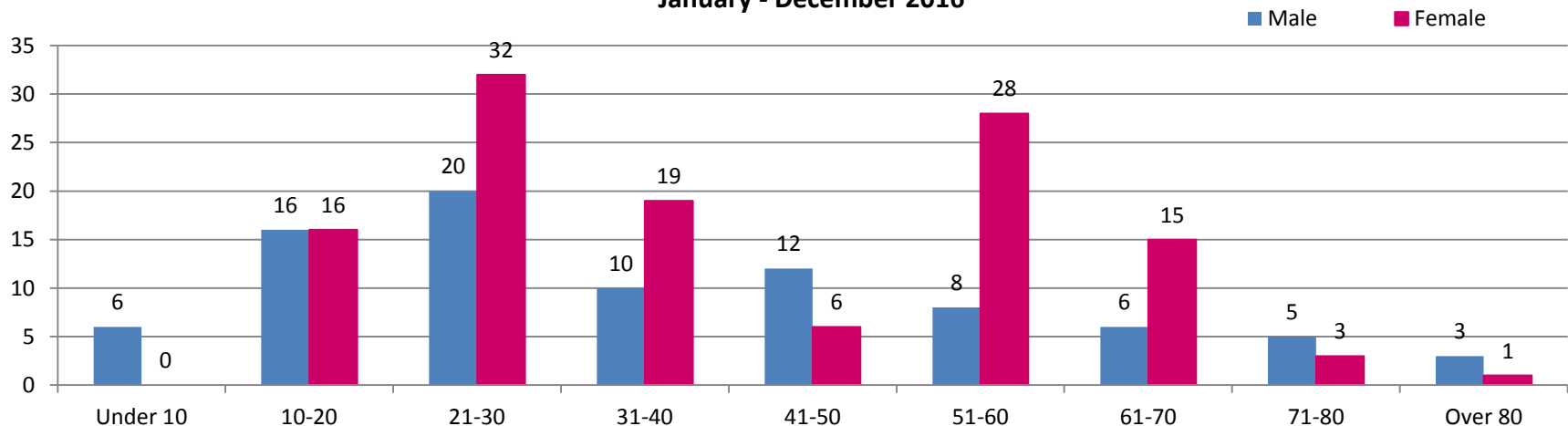
Pedestrian Characteristics

57% of victims were female, 42.99% of victims were male.

50% of female victims were in the 21-30 and 51-60 year age categories

41.86 % of male victims were in the 10-20 and 21-30 year age categories.

Vehicle/Pedestrian Collisions - Victims
January - December 2016

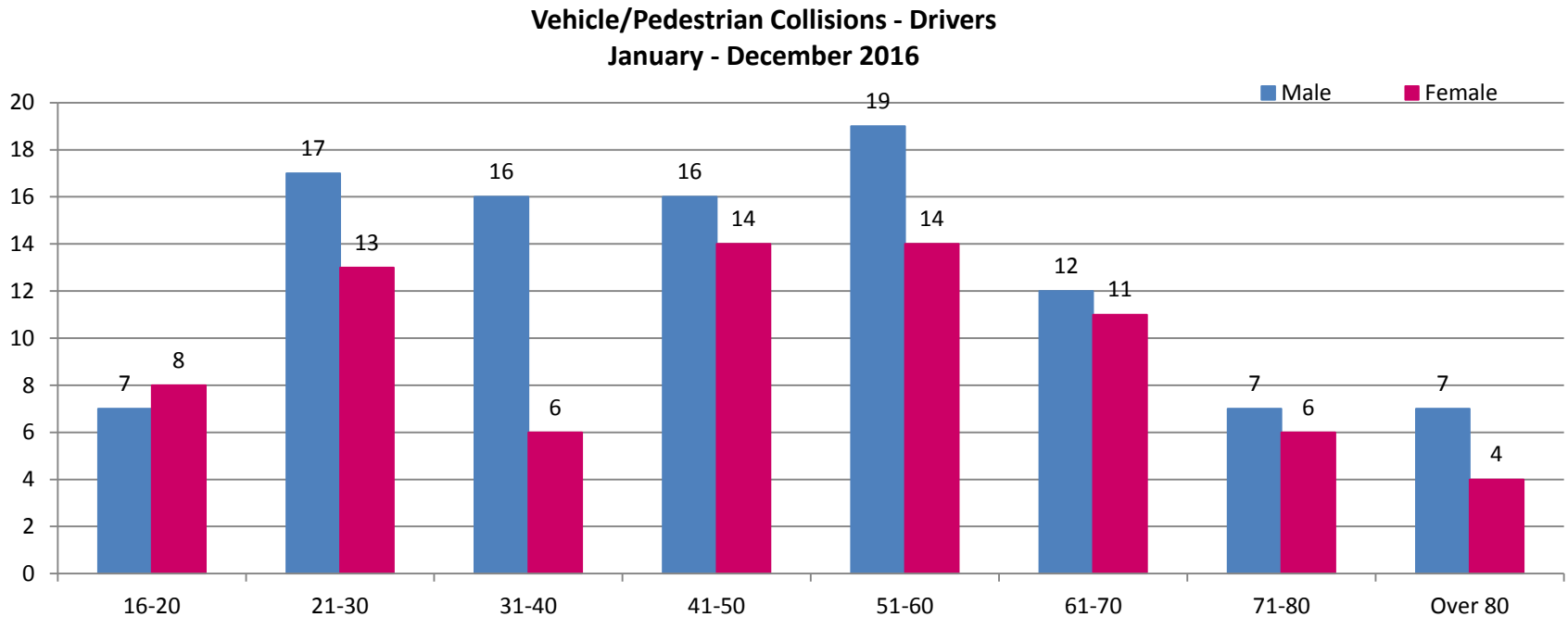


* Above chart and figures exclude 9 cases where victim age/sex is unknown

Driver Characteristics

Males accounted for 58.5% of drivers involved in the reported vehicle/pedestrian collisions*.

Nearly 35.64% of the drivers were males in the age ranges of 21-30 and 51-60.



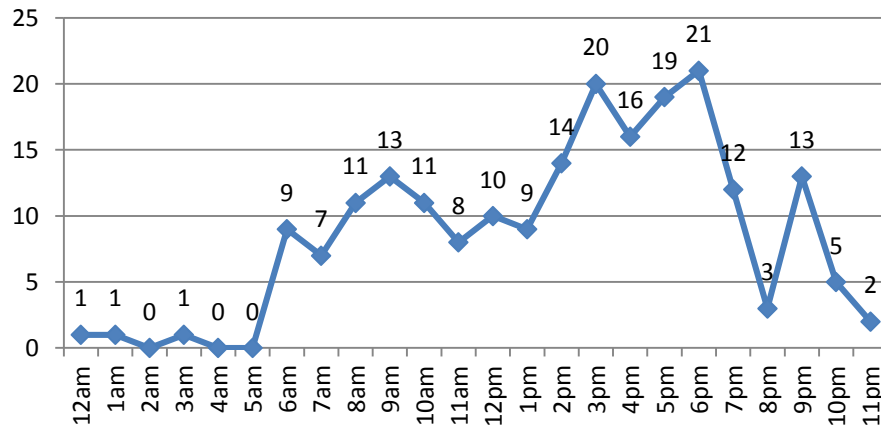
* Figure excludes 6 cases where driver sex is unknown

Above chart excludes 29 cases where driver age is unknown

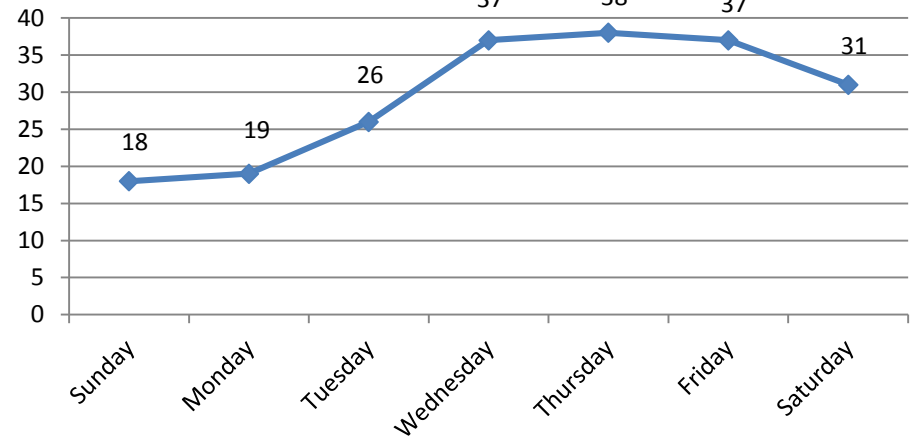
Peak Collision Times

In January to December 2016 the 3pm - 6pm timeframe saw the highest number of reported collisions. Wednesday through Saturdays were the peak days for vehicle/pedestrian collisions noting Thursdays had 38 incidents.

Time of Day
January - December 2016



Day of Week
January - December 2016



Weather & Lighting Conditions

66.42% of the reported collisions in January-December 2016 occurred during clear and/or sunny weather conditions.

31.34% took place during overcast or rain and/or foggy conditions.

3 incidents took place during winter conditions.

67% of the collisions took place during daylight.

46.26% of the collisions took place during daylight with clear and/or sunny weather conditions.

Note: excludes 72 cases where weather conditions are unknown.

**Weather & Lighting Conditions
January - December 2016**

