

# PARK PLANNING IS UNDERWAY

## What's happening?

Parks and Recreation staff have started the park planning process to improve and expand the safe, accessible, and sustainable use of the Lake Echo District Park.

To accommodate this process, the park planning project was added to the Parks and Recreation 2018/2019 budget and business plan.

## Why?

Park issues and opportunities have been brought forward by Councillor Hendsbee, organized groups, residents, and operations staff.

Park plans are useful tools to direct park enhancements over time and to ensure that work is in-keeping with public expectation.

## Your role

As a follow-up to our October 15 workshop, we want your feedback on the following design concept. Help us refine this vision by adding comments to the boards.

- Is this concept a reflection of public feedback?
- Do you see elements that you like? Why?
- Do you see elements that you don't like? Why?
- Is there anything missing?

## Timeline

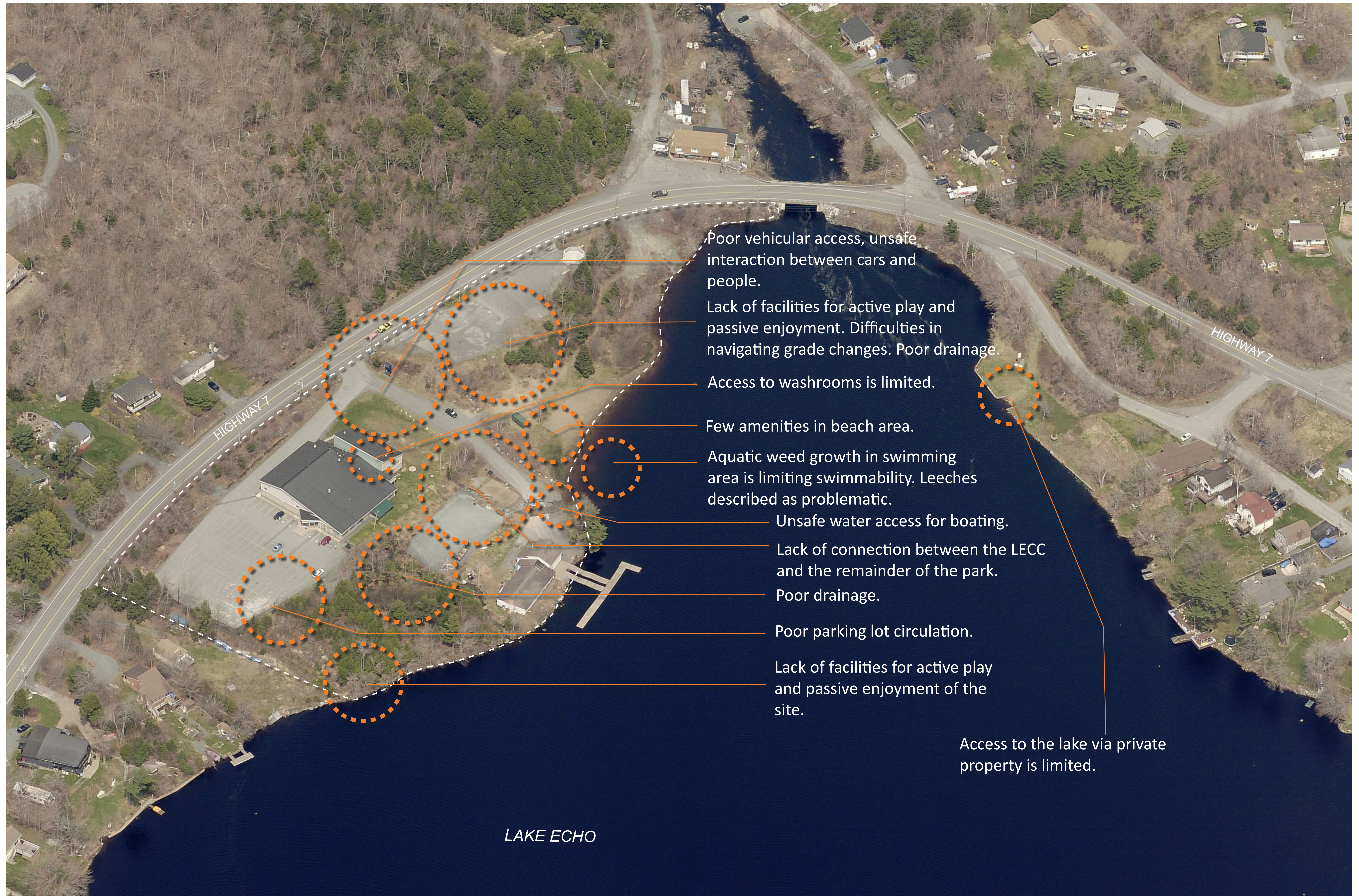


# LAKE ECHO DISTRICT PARK

HALIFAX



# EXISTING ISSUES TO RESOLVE



## LAKE ECHO DISTRICT PARK

HALIFAX



# PARK OPPORTUNITIES

Continued support for community initiatives like community gardening.

Improved connection between LECC and Orenda.

Improved site drainage with the addition of swales, culverts, catch basins, and planting trees near paved surfaces.

Development of woodland trails and nature programming in partnership or led by the community.

Coordination with Orenda to establish accessible beach parking options.

Improved circulation of vehicles by realigning the LECC driveway, thinning trees for better driveway sightlines, installing curbs, widening parking circulation driveway.

Development of an active recreation node.

Development of a gathering area, performance area, beach shelter.

Implementation of beach-side active play.

Coordination with Nova Scotia Environment on the removal of aquatic weeds.

Coordination with the LECC to improve access to washrooms.

Development of a looping path network to connect the entire park.

Removal of the existing boat launch to eliminate risk to safety. Coordination with the Lake Echo Boating Association and the community on appropriate boat launch options.



## LAKE ECHO DISTRICT PARK

HALIFAX



# PARK LAYOUT CONCEPT



**e**  
**DRIVEWAY AND PARKING**  
To improve access to the property, it is proposed that the driveway to Orenda Canoe Club and the LECC be straightened.

Sightlines into the property could be improved with tree thinning along Highway 7.

The addition of curbs will act as a wheel-stop during winter conditions and will better separate cars from people. The addition of wooden bollards at the top of slopes will be a barrier for both pedestrians and cars.



**d**  
**WALKING PATHS**  
As a link between park areas and to accommodate year-round activity, a paved path network is proposed to loop around the park.  
  
Community led trail development and programming within wooded areas could expand opportunities for play and activity within the park.



**c**  
**LAKE ECHO BEACH AND BOAT LAUNCH**  
Due to safety considerations, it is recommended that the boat launch be closed. With direction from Regional Council Staff could explore an alternate launch location to restore boating access to the lake.  
  
It is proposed that aquatic weeds be removed from the swimming area in accordance with guidelines set out by NS Environment.  
  
A beach-side play space would add a new play element to the park that can be supervised from the adjacent gazebo. Options for a play space include stacked timbers as a connection to the former Lake Echo sawmill.  
  
Lounging chairs are envisioned to add additional seating to the beach area.



**a**  
**UPPER PARK**  
A new greenspace is envisioned on the former gas station lot. A walking-loop rings the space with a lawn and active play area within. Benches at the top of the slope provide views to the lake.  
  
Separation from the road is achieved with a treed buffer and a guide rail.  
  
HRM will coordinate with Canada Post and the NS Department of Transportation and Infrastructure Renewal on the best option for mailbox access.  
  
**b**  
**HILLSIDE AMPHITHEATRE**  
A sloping paved pathway is proposed to connect the upper park to the beach. Set into the slope along the path are tiered seating walls.  
  
A gazebo/picnic shelter at the base of the slope overlooks the beach area and doubles as a stage or social space. It is envisioned that an electrical hook-up could activate this space for events (e.g. concerts, Christmas tree lighting).

# LAKE ECHO DISTRICT PARK