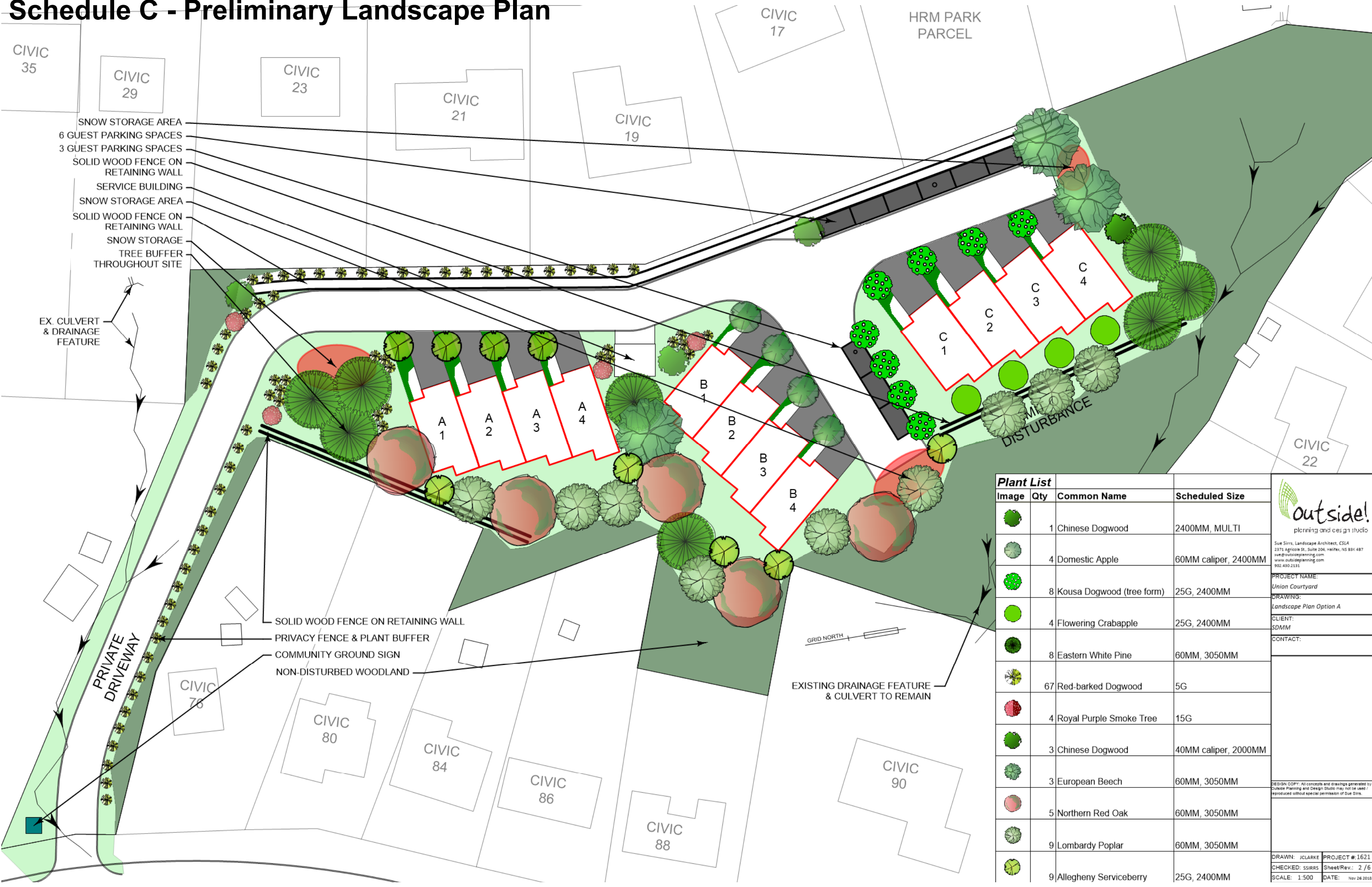


Schedule C - Preliminary Landscape Plan



Plant List			
Image	Qty	Common Name	Scheduled Size
	1	Chinese Dogwood	2400MM, MULTI
	4	Domestic Apple	60MM caliper, 2400MM
	8	Kousa Dogwood (tree form)	25G, 2400MM
	4	Flowering Crabapple	25G, 2400MM
	8	Eastern White Pine	60MM, 3050MM
	67	Red-barked Dogwood	5G
	4	Royal Purple Smoke Tree	15G
	3	Chinese Dogwood	40MM caliper, 2000MM
	3	European Beech	60MM, 3050MM
	5	Northern Red Oak	60MM, 3050MM
	9	Lombardy Poplar	60MM, 3050MM
	9	Allegheny Serviceberry	25G, 2400MM

planning and design studio

Sue Sirrs, Landscape Architect, CSLA
2371 Agricola St., Suite 204, Halifax, NS B3K 4B7
sue@outsideplanning.com
www.outsideplanning.com
902.490.2191

PROJECT NAME:
Union Courtyard

DRAWING:
Landscape Plan Option A

CLIENT:
SDMM

CONTACT:

DESIGN COPY: All concepts and drawings generated by
outside planning and design studio may not be used /
reproduced without special permission of Sue Sirrs.

DRAWN: JCLARKE	PROJECT #: 1621
CHECKED: SSIRRS	Sheet/Rev.: 2 / 6
SCALE: 1:500	DATE: Nov 26 2018



1 FRONT ELEVATION
1/8" = 1'-0"



Green Living,
Levis St Design Group Ltd.
home designers + builders

Box 20089 RPO Spryfield,
Halifax, Nova Scotia B3R 2K9

cell: +1 (902) 830-4512
aholley@levstd.com
www.levstd.com

Andrew Holley GHP/CAPS
Certified Housing Professional
Certified Aging-in-Place Specialist

PROJECT

UNION COURTYARD

No.	Description	Date
1	-	-
2	-	-
3	-	-
4	-	-
5	-	-
6	-	-

DRAWN FXS

DATE 01 NOV 18

SCALE 1/8" = 1'-0"

A8



1 BACK ELEVATION
1/8" = 1'-0"



Green Living.

Levis St Design Group Ltd.

home designers + builders

Andrew Holley

GMP/CAPS
Certified Housing Professional
Certified Aging-in-Place Specialist

Box 20089 RPO Spryfield,
Halifax, Nova Scotia B3R 2K9

cell: +1 (902) 830-4512

aholley@levistd.com

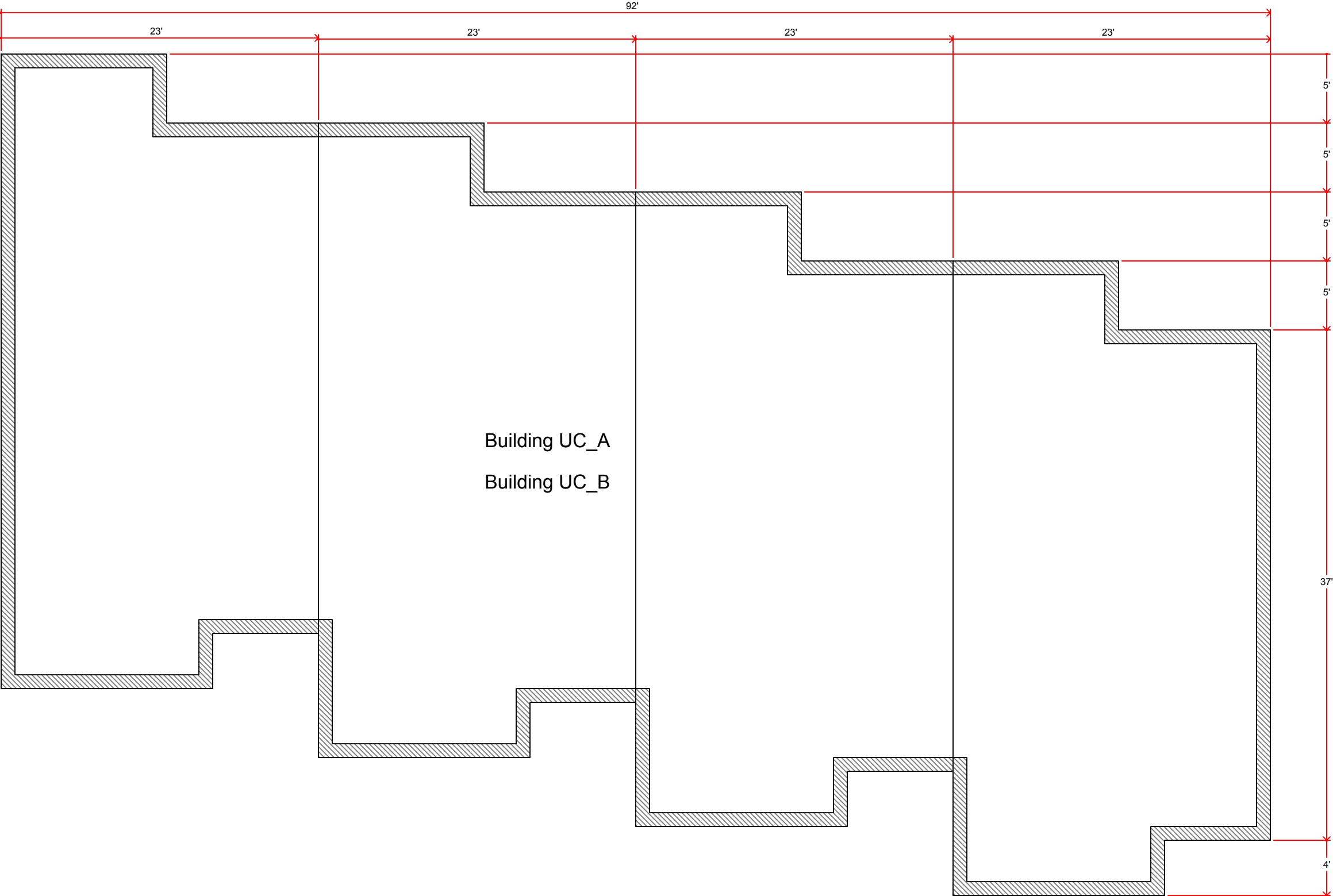
www.levistd.com

PROJECT
UNION COURTYARD

No.	Description	Date
1	-	-
2	-	-
3	-	-
4	-	-
5	-	-
6	-	-

DRAWN	FXS
DATE	01 NOV 18
SCALE	1/8" = 1'-0"
A9	

Schedule E - Building Footprint (Cluster A and B)



Schedule F - Building Footprint (Cluster C)

