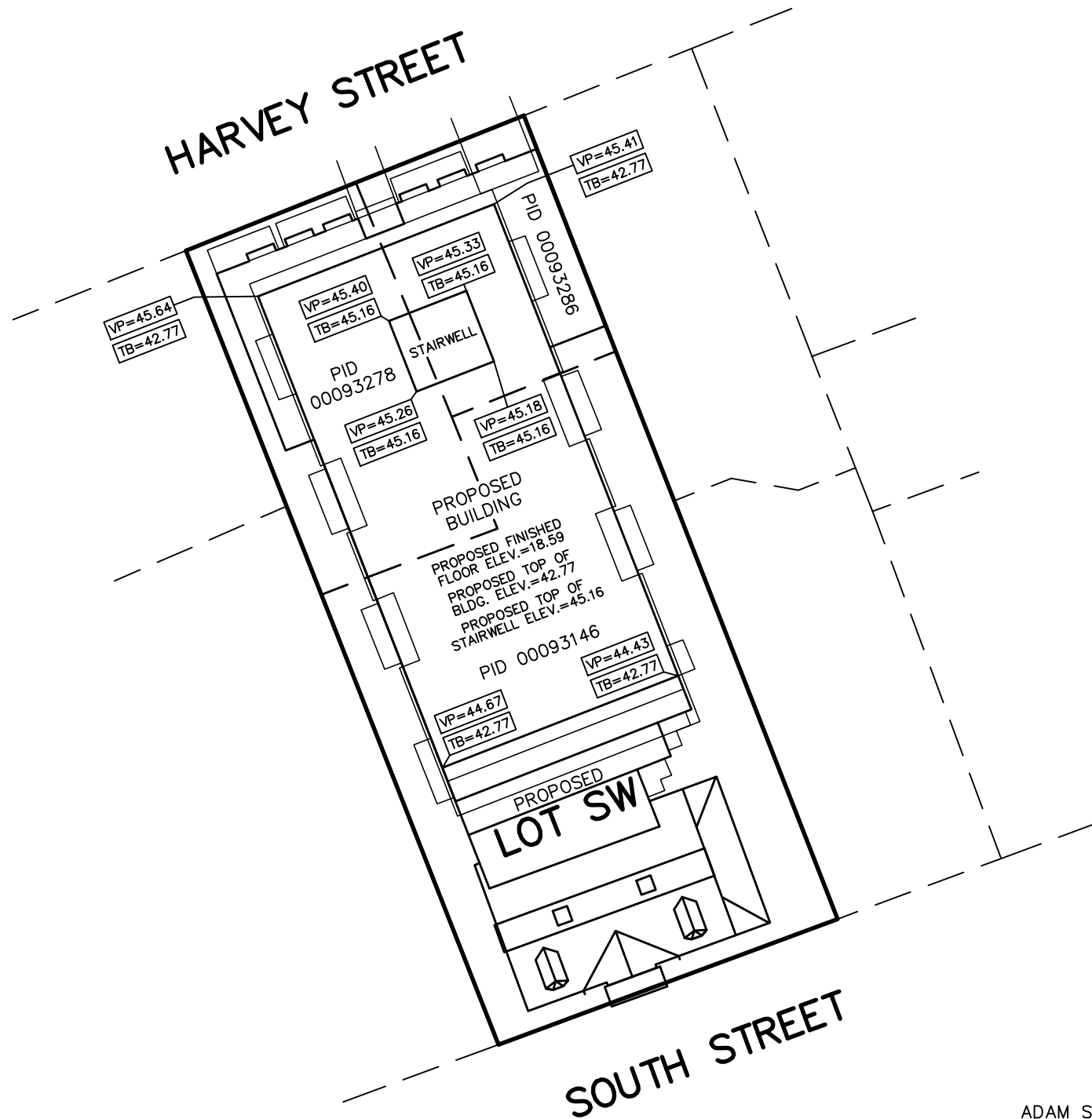


NOVA SCOTIA GRID NORTH
REFERRED TO MERIDIAN 64°30'W



LEGEND:

LANDS DEALT WITH BY THIS SKETCH	—————
PROPERTY IDENTIFICATION NUMBER	PID
VIEW PLANE 8 ELEVATION	VP=45.00
TOP OF BUILDING ELEVATION	TB=42.00

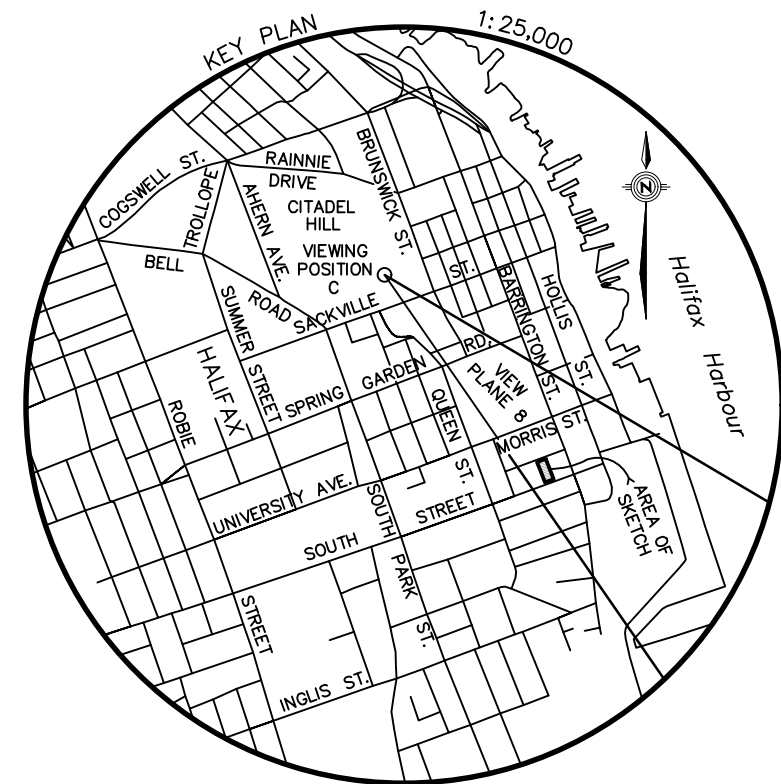
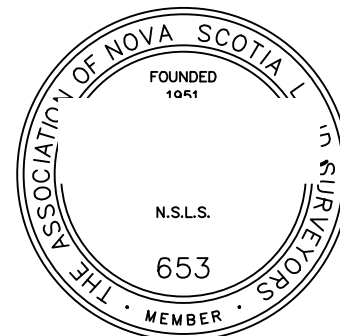
NOTES:

ELEVATIONS ARE GEODETIC, DERIVED FROM N.S.C.M. 4861, HAVING A PUBLISHED ELEVATION OF 16.794 METRES (CGVD28).

ELEVATIONS ARE SHOWN IN METRES AND DECIMALS THEREOF.

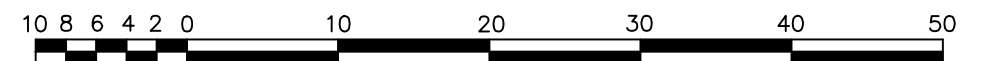
VIEW PLANE 8 REFERENCE POINT IS FROM VIEWING POSTITION C.

ADAM STEPHEN, N.S.L.S.



WSP Canada Inc.
1 Spectacle Lake Drive
Dartmouth, Nova Scotia
Canada, B3B 1X7
T 902-835-9955
F 902-835-1645
www.wsp.com

Sketch Showing VIEW PLANE 8 Elevations
over Proposed LOT SW
being a Proposed Consolidation of
PID's 00093146, 00093286 and 00093278
SOUTH STREET and HARVEY STREET
HALIFAX
HALIFAX COUNTY
PROVINCE OF NOVA SCOTIA



SCALE : 1/500 (METRIC)
MARCH 27, 2020