

A

B

C

D

1/26/2021 9:23:23 AM

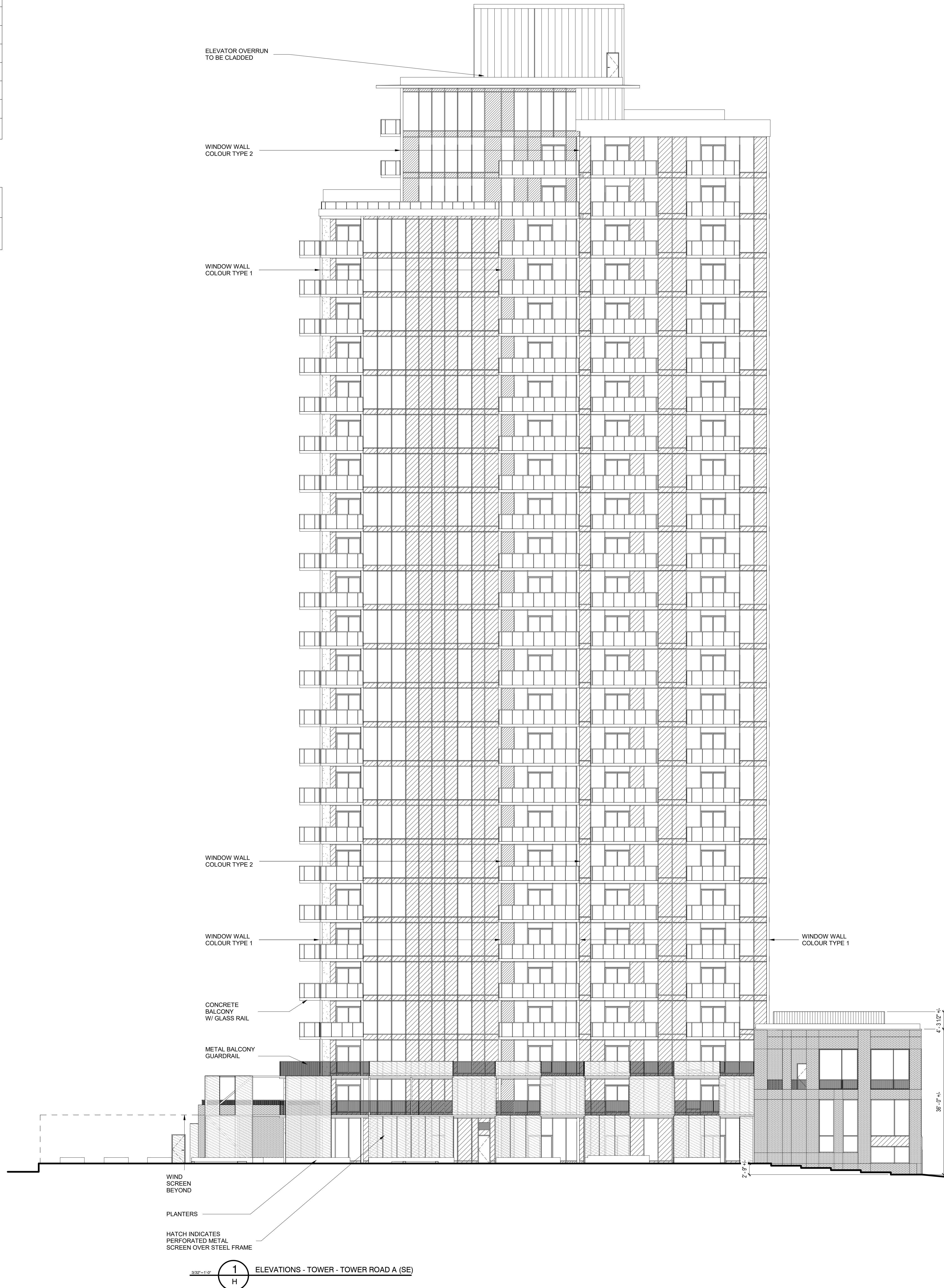
SIGNAGE LEGEND:

| | |
|-------|-----------------------------------|
| (SN1) | GENERAL SIGNAGE BAND LOCATION |
| (SN2) | GENERAL ENTRANCE SIGNAGE LOCATION |
| (SN3) | GENERAL BAND SIGNAGE LOCATION |
| (SN4) | GENERAL BAND SIGNAGE LOCATION |
| (SN5) | GENERAL BAND SIGNAGE LOCATION |
| (SN6) | GENERAL BAND SIGNAGE LOCATION |
| (SN7) | GENERAL ENTRANCE SIGNAGE LOCATION |
| (SN8) | GENERAL ENTRANCE SIGNAGE LOCATION |

WINDOW WALL LEGEND:

| | |
|---------------|---|
| COLOUR TYPE 1 | MULLION TYPE A GLAZING TYPE A SPANDREL TYPE A |
| COLOUR TYPE 2 | MULLION TYPE B GLAZING TYPE B SPANDREL TYPE B |

NOTE:
METAL STOREFRONTS ARTICULATED IN MASONRY, WOOD, METAL AND / OR GLASS. SEE 3D IMAGERY FOR MATERIAL AND COLOUR REFERENCE.
ALLOWABLE EXTERIOR LIGHTING TYPES:
DECORATIVE WALL SCONCE LIGHTING
'GOOSENECK' TYPE PROJECTED LIGHTING
UP / DOWN BUILDING LIGHTING
LIGHTING FOR THE PURPOSE OF EXTERNALLY ILLUMINATING SIGNS
EXTERIOR LIGHTING NOTES:
ALL EXTERIOR LIGHTING TO CONFORM WITH LOCAL BYLAWS. LIGHTING



| | |
|---------------------------------------|----------------|
| RESIDENTIAL - ROOF | 313' - 6 1/2" |
| RESIDENTIAL - LEVEL 29 - MACHINE ROOM | 303' - 3 1/2" |
| RESIDENTIAL - LEVEL 28 - MECH | 293' - 11 1/2" |
| RESIDENTIAL - LEVEL 27 | 281' - 11 1/2" |
| RESIDENTIAL - LEVEL 26 | 271' - 9 1/2" |
| RESIDENTIAL - LEVEL 25 | 261' - 7 1/2" |
| RESIDENTIAL - LEVEL 24 | 251' - 11 1/2" |
| RESIDENTIAL - LEVEL 23 | 242' - 3 1/2" |
| RESIDENTIAL - LEVEL 22 | 232' - 7 1/2" |
| RESIDENTIAL - LEVEL 21 | 222' - 11 1/2" |
| RESIDENTIAL - LEVEL 20 | 213' - 3 1/2" |
| RESIDENTIAL - LEVEL 19 | 203' - 7 1/2" |
| RESIDENTIAL - LEVEL 18 | 193' - 11 1/2" |
| RESIDENTIAL - LEVEL 17 | 184' - 3 1/2" |
| RESIDENTIAL - LEVEL 16 | 174' - 7 1/2" |
| RESIDENTIAL - LEVEL 15 | 164' - 11 1/2" |
| RESIDENTIAL - LEVEL 14 | 155' - 3 1/2" |
| RESIDENTIAL - LEVEL 13 | 145' - 7 1/2" |
| RESIDENTIAL - LEVEL 12 | 135' - 11 1/2" |
| RESIDENTIAL - LEVEL 11 | 126' - 3 1/2" |
| RESIDENTIAL - LEVEL 10 | 116' - 7 1/2" |
| RESIDENTIAL - LEVEL 09 | 106' - 11 1/2" |
| RESIDENTIAL - LEVEL 08 | 97' - 3 1/2" |
| RESIDENTIAL - LEVEL 07 | 87' - 7 1/2" |
| RESIDENTIAL - LEVEL 06 | 77' - 11 1/2" |
| RESIDENTIAL - LEVEL 05 | 68' - 3 1/2" |
| RESIDENTIAL - LEVEL 04 | 58' - 7 1/2" |
| RESIDENTIAL - LEVEL 03 | 48' - 11 1/2" |
| RESIDENTIAL - OFFICE B | 45' - 1 1/2" |
| RESIDENTIAL - OFFICE A | 32' - 7 1/2" |
| MAIN LEVEL | 27' - 3 1/2" |

Breakhouse[®] Architecture

1096 Marginal Road, Suite 140
Halifax, NS B3H 4H4
T 902 431 3102
F 902 432 0860
www.breakhouse.ca

GENERAL NOTES:

SEE NOTES ON EACH SHEET FOR DETAILS
ALL DIMENSIONS ARE IN METERS UNLESS OTHERWISE SPECIFIED
ALL DIMENSIONS ARE TO FACE UNLESS OTHERWISE SPECIFIED
ALL DIMENSIONS ARE TO FACE UNLESS OTHERWISE SPECIFIED

CONSULTANTS:

STRUCTURAL:
CAMPBELL COMEAU
2714 Digby Road #113
Halifax, NS B3H 4H5
T 902 252 2131
www.campbellcomeau.ca

MECHANICAL:
ML ENGINEERING
1111 Main Street
Halifax, NS B3H 4H5
T 902 252 2131
www.mlengineering.ca

ELECTRICAL:
ELECTEC ENGINEERING
30 Duke St. Dartmouth, NS B2Y 2P7
T 902 432 0860
www.electecengineering.ca

LANDSCAPE:
UPLAND
Planning + Design Studio
65 King St. Dartmouth, NS B2Y 2P7
T 902 432 0860
www.uplandstudio.ca

CIVIL:
DESIGN POINT
222 Waterfront Dr #104
Dartmouth, NS B3A 0Y3
T 902 432 0860
www.designpoint.ca

| No. | Date | Remarks |
|-----|------------|--|
| 3 | 19 JULY 21 | ISSUED FOR DEVELOPMENT AGREEMENT - REVISIONS |
| 2 | 12 JULY 21 | ISSUED FOR DEVELOPMENT AGREEMENT - REVISIONS |
| 1 | 08 APR 21 | ISSUED FOR DEVELOPMENT AGREEMENT |

ISSUED/REVISIONS:

NORTH ARROW:

SEAL:

CLIENT:

FARES INC.

Contact: David Quilichini
Vice President
902.817.0700

PROJECT:

KINGS WHARF BUILDING E

50 Kings Wharf Place,
Dartmouth, NS, B2Y 0B4

TITLE:

SCHEDULE H
SE (ROAD A)
ELEVATION OF TOWER
INCLUDES
PRELIMINARY
SIGNAGE PLAN

DRAWN BY:

Author

PROJECT #:

Project Number

SCALE:

3/32" = 1'-0"

DRAWING #:

Schedule H

© Breakhouse Architecture Inc. 2012