

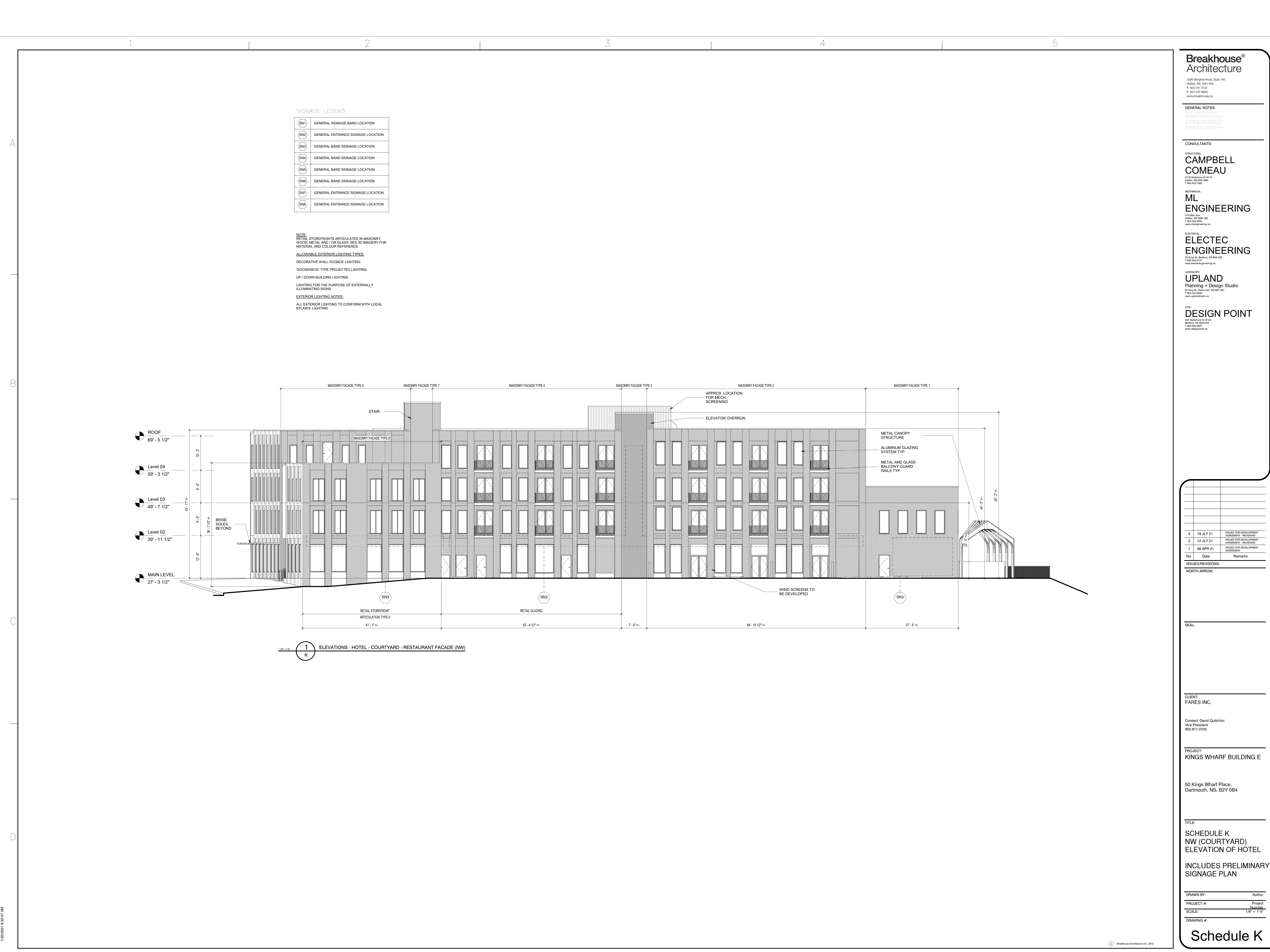
7/26/2021 9:52:07 AM

A

B

C

D



Breakhouse[®]

Architecture

1096 Marginal Road, Suite 140

Halifax, NS B3H 4H4

T 902 431 3102

F 902 432 3660

www.breakhouse.ca

GENERAL NOTES:

1. ALL NOTES ON THIS DRAWING ARE TO BE READ IN CONJUNCTION WITH THE PROJECT MANUAL AND THE SPECIFICATIONS.

2. THE CONTRACTOR SHALL BE RESPONSIBLE FOR OBTAINING ALL NECESSARY PERMITS AND APPROVALS FROM THE APPROPRIATE AGENCIES.

3. THE CONTRACTOR SHALL BE RESPONSIBLE FOR OBTAINING ALL NECESSARY INSURANCE COVERAGE.

CONSULTANTS:

STRUCTURAL:

CAMPBELL COMEAU

2714 Gleadowe St #113

Halifax, NS B3H 4W5

T 902 432 7883

MECHANICAL:

ML ENGINEERING

111 Main St.

Halifax, NS B3H 1B5

T 902 222 5564

www.mlengineering.ca

ELECTRICAL:

ELECTEC ENGINEERING

31 Duke St. Dartmouth, NS B2H 3G5

T 902 252 2131

www.electecengineering.ca

LANDSCAPE:

UPLAND

Planning + Design Studio

63 King St. Dartmouth, NS B2H 2P7

T 902 433 0668

www.uplandstudio.ca

CIVIL:

DESIGN POINT

222 Waterfront Dr #104

Dartmouth, NS B3A 0Y3

T 902 433 2227

www.designpoint.ca

No.	Date	Remarks
3	19 JULY 21	ISSUED FOR DEVELOPMENT AGREEMENT - REVISIONS
2	12 JULY 21	ISSUED FOR DEVELOPMENT AGREEMENT - REVISIONS
1	08 APR 21	ISSUED FOR DEVELOPMENT AGREEMENT

ISSUED/REVISIONS:

NORTH ARROW:

SEAL:

CLIENT:

FARES INC.

Contact: David Quilichini
Vice President
902.817.0700

PROJECT:

KINGS WHARF BUILDING E

50 Kings Wharf Place,
Dartmouth, NS, B2Y 0B4

TITLE:

SCHEDULE K
NW (COURTYARD)
ELEVATION OF HOTEL

INCLUDES PRELIMINARY
SIGNAGE PLAN

DRAWN BY:

Author

PROJECT #:

Project Number

SCALE:

1/8" = 1'-0"

DRAWING #:

Schedule K

© Breakhouse Architecture Inc. 2012