

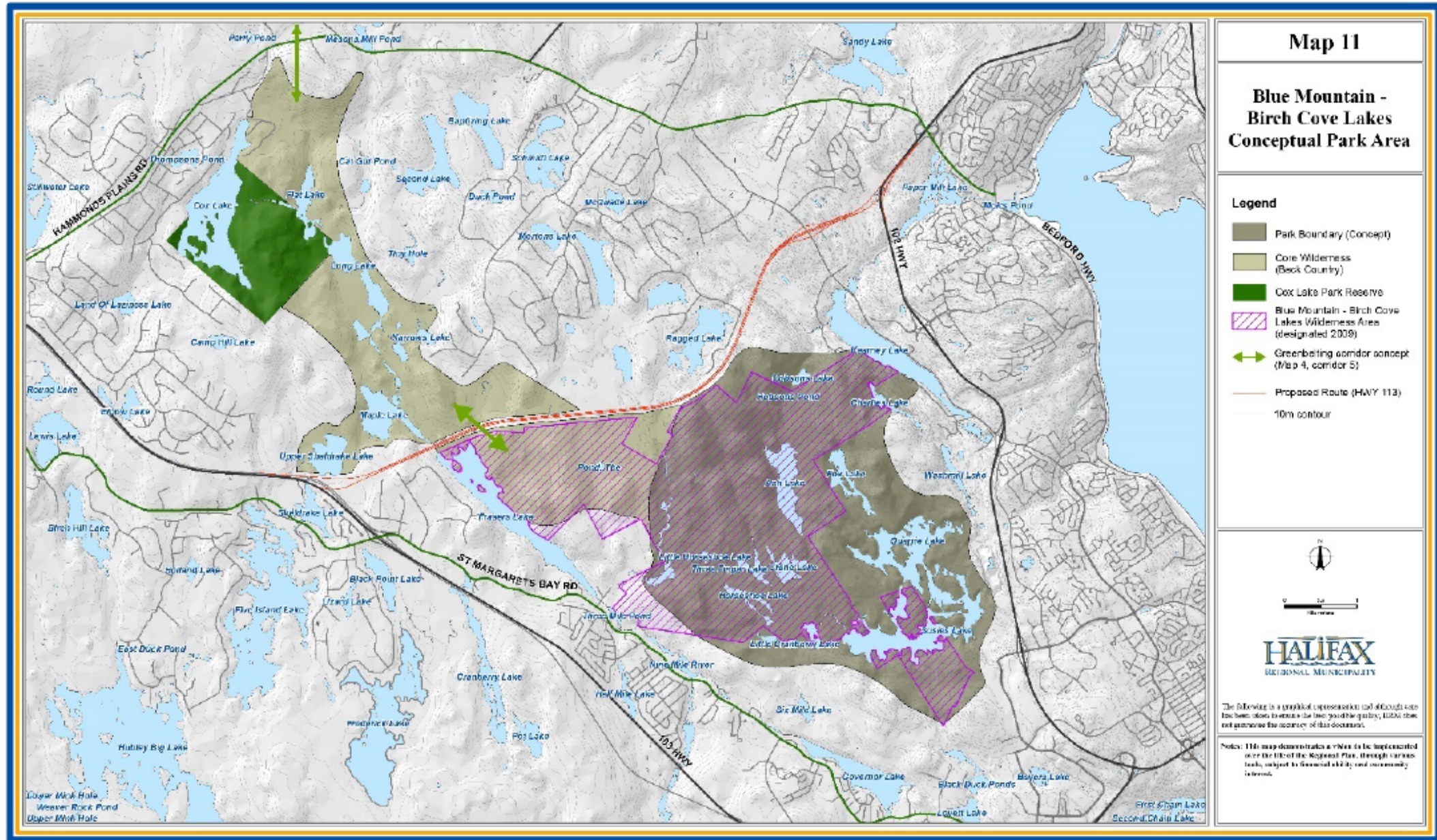


Halifax Regional Municipality
Blue Mountain-Birch Cove
Lakes Comprehensive Study

Presentation



Blue Mountain-Birch Cove Lakes Area





Agenda

1. Meeting / Project Overview
2. Discussion of Key Study Areas
3. Information Gathering
4. Conclusion / Follow-up



**Where do you have the most familiarity
within the study area?**

One single point per participant please

Site Familiarity

Question

BMBCL Comprehensive Study

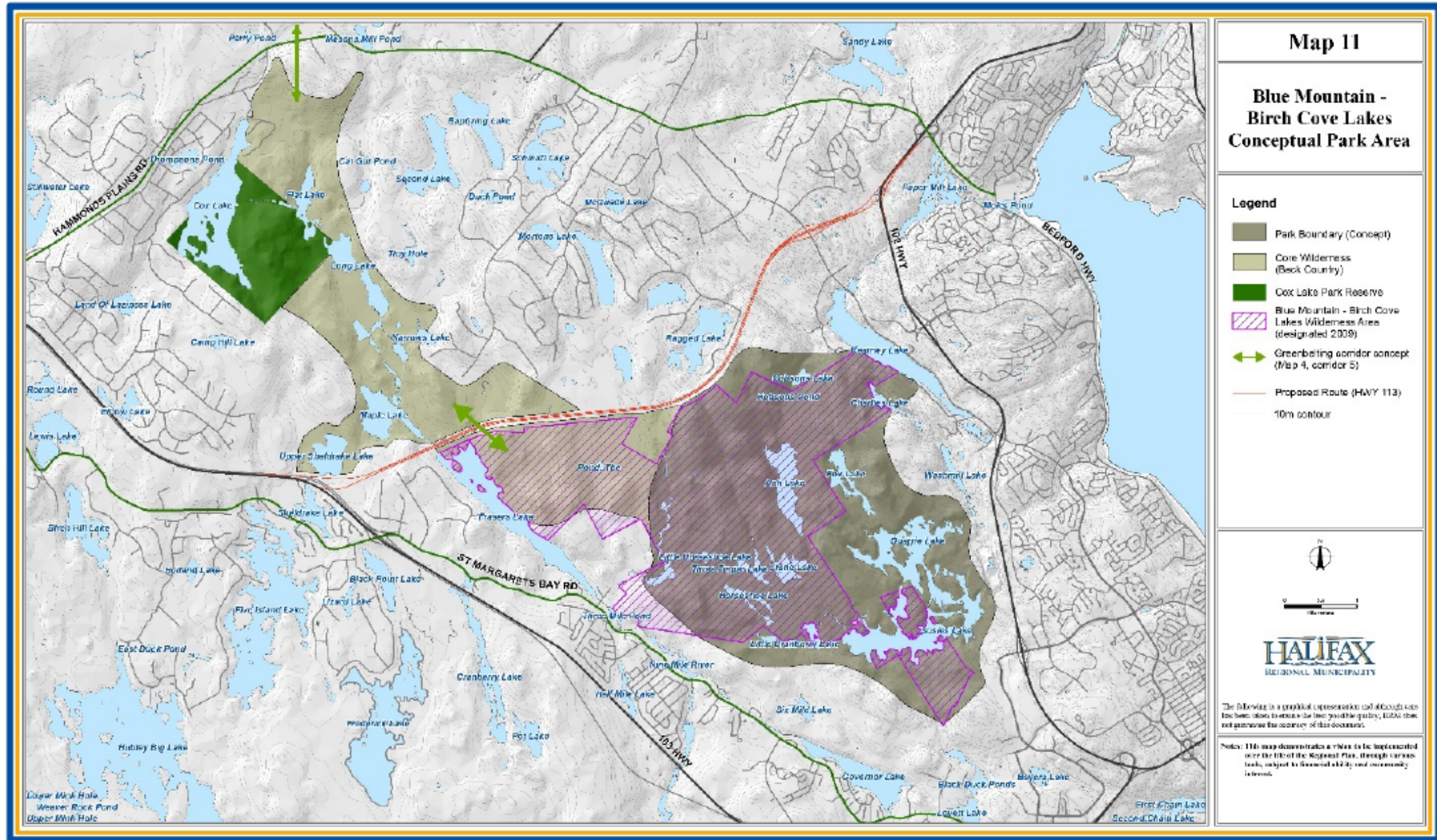
Project Overview

Project Work Plan

The Project has been organized into the following tasks:

- Key Participant and Public Engagement
- Review of Ecological and Recreational Current Conditions
- An Archaeological and Cultural Study
- Land Use and Settlement Analysis
- Governance Model Review

Blue Mountain-Birch Cove Lakes Area



Project Timelines

Timeframe 1 (Complete)

- Project kickoff
- Key participant session
- Background research on primary objectives

Timeframe 2 (Current)

- Public engagement (tonight's meeting)
- Background & field research on primary objectives
- Second key participant session, related targeted interviews
- Interim reporting

Timeframe 3

- Third key participant session
- Draft comprehensive study
- Final comprehensive study

BMBCL Comprehensive Study

Key Study Areas / Information Gathering

Key Project Components

- The following slides will discuss / request feedback on the following topics:
 - Recreational Conditions
 - Ecological Conditions
 - Archaeological and Cultural Resource Conditions
 - Land Use and Settlement Analysis
 - Governance Model Review
- Your feedback is important. We will ask for input from you which will assist us in identifying important elements within each of the project components

Recreational Conditions

Recreation
considers both
active (e.g., hiking,
swimming) and
passive (e.g.,
meditation)
activities

- Recreation in the BMBCL area will be evaluated in part through the ecological surveys and supplemented by additional resources including recreation apps & websites (Alltrails, Trailforks)
- With this data Stantec staff will identify known recreational routes within the BMBCL area and study their connections to other known routes including St. Margaret's Bay Trail, Five Bridges Lakes trails
- Following identification, these areas will be studied with a particular focus on the potential impact of Highway 113. Methods will involve desktop analysis as well as site visits designed to note unrecorded trails and areas associated with human use.



**What recreational activities take place in the
BMBCCL area?**

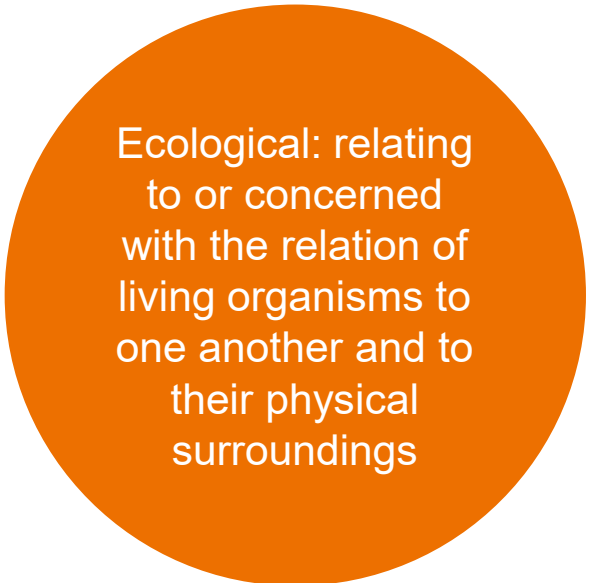
Recreational Conditions

Question

Ecological / Environmental Conditions

Evaluation will be a combination of desktop and field analysis

- Desktop:
 - Habitat mapping
 - Review of species of concern known from the area
- Field surveys:
 - Representative habitat analysis, connectivity & environmental conditions
 - “Ecosystem services analysis” assessment will identify key functions provided by the area, including climate mitigation & adaptation
 - Identification of wildlife corridors that may influence the BMBCL area



Ecological: relating to or concerned with the relation of living organisms to one another and to their physical surroundings



What are the natural features that you appreciate most about the BMBCCL study area?

Ecological Conditions

Question



**Identify on the map the areas you visit
which you associate most with
environmental importance.**

Ecological Conditions

Question

Archaeological and Cultural Resources

This study will include a desktop component and site reconnaissance as it relates to potential resources including Mi'kmaq and African Nova Scotian communities

- Review of relevant resources and recorded info of archaeological sites
- Review of historical data
- Consultation with regulators or subject matter experts as warranted
- Archaeological pedestrian survey / field assessment to identify areas of high potential which may warrant further investigation through shovel testing.

An orange circle containing text about archaeological and cultural resources.

Sites, materials
and, in certain
instances,
landscapes and/or
places of historical,
archaeological,
cultural / spiritual
importance



**Are there known important / sensitive
cultural elements that you would identify
within the Study Area?**

Archaeological and Cultural Resource Study

Question



What cultural elements are priorities in gathering additional research during this study?

Archaeological and Cultural Resource Study

Question

Land Use and Settlement Analysis

Land use describes the human use of land and represents the economic and cultural activities (e.g., recreation, residential, commercial, industrial, etc.) that are practiced in each place

- Development of adjacent communities will inform and influence the proposed park development
- Analysis and approach:
 1. Land use inventory
 2. Land use policy and regulation review
 3. Summation of development activity and land development trends
 4. Report on planning implications
- Stantec will analyze current land use (developed and undeveloped) and settlement types in the Study Area and vicinity
 - Formal and informal existing and potential access points




**Identify existing access points that you use
in visiting the BMBCL area.**

Land Use and Settlement Analysis

Question

Governance Model Review



Governance is the
system by which
entities are
managed /
controlled

- Review of literature on parks and governance models
- Compilation and summary of accepted and interesting park governance approaches, noting key strengths and weaknesses and typical applications
- Solicit feedback concerning governance models to determine broad range of views concerning acceptability and viability of the options

Governance Model Review

- Many jurisdictions involved
- Potential partners in delivery
 - Local, provincial, federal & First Nations representation
 - Landowners and adjacent communities
- Public expectation in park amenities, services, development
- Community interest in stewardship



What are important factors for good park management and governance?

Governance Model Review

Question

BMBCL Comprehensive Study

Closing and Additional Feedback

Thank You

- For more information:
<https://www.halifax.ca/about-halifax/regional-community-planning/regional-plan/proposed-blue-mountain-birch-cove-lakes>