

SCHEDULE "A"

ALL that certain lot, piece or parcel of land situate, lying and being at Indian Harbour, in the County of Halifax, Province of Nova Scotia and being more particularly described as follows:

BOUNDED on the east by the rear line of the Indian Harbour Grant, so called as granted to George Sherlock and Foster Sherlock;

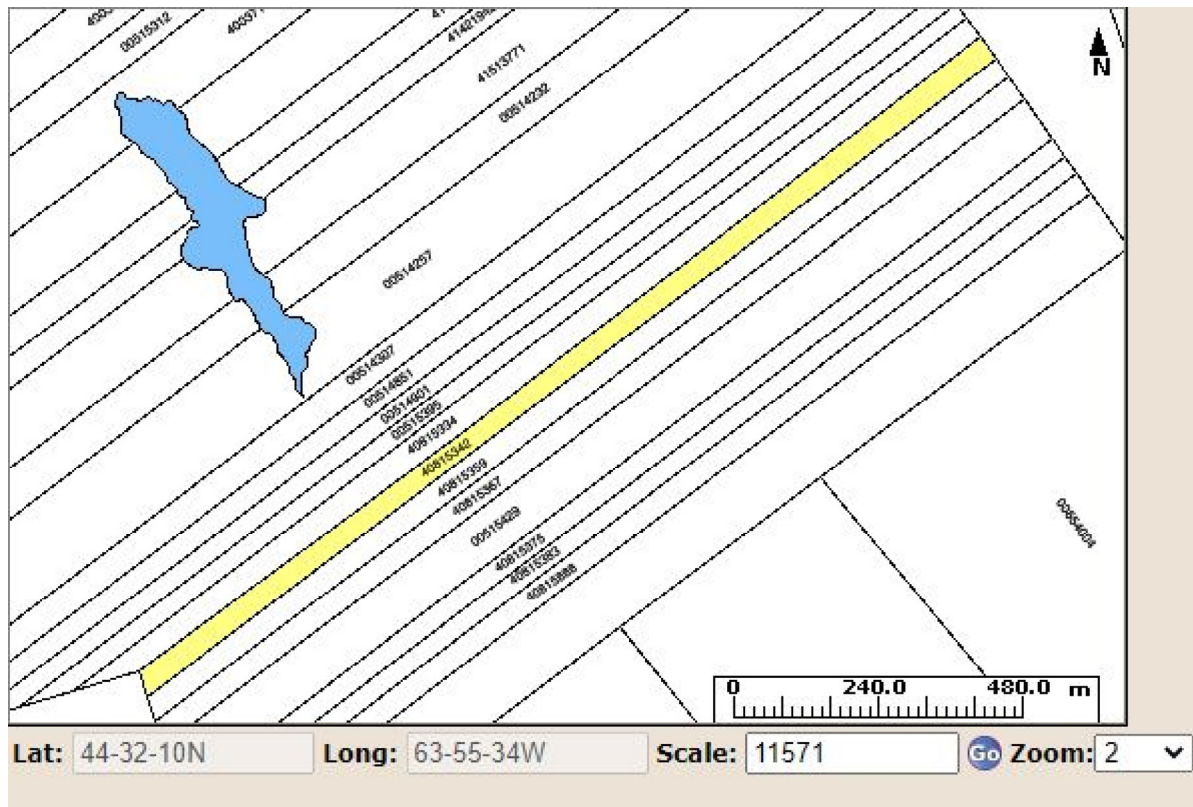
BOUNDED on the west by lands assessed to Theodore Boutilier;

BOUNDED on the south by lands assessed to Everett Shatford;

BOUNDED on the north by lands assessed to St. Peters Church;

CONTAINING 16.02 ACRES MORE OR LESS.

Reference is made to Document No. 109722760.



The Provincial mapping is a graphical representation of property boundaries which approximate the size, configuration and location of parcels. Care has been taken to ensure the best possible quality, however, this map is not a land survey and is not intended to be used for legal descriptions or to calculate exact dimensions or area. The Provincial mapping is not conclusive as to the location, boundaries or extent of a parcel [*Land Registration Act* subsection 21(2)]. THIS IS NOT AN OFFICIAL RECORD.