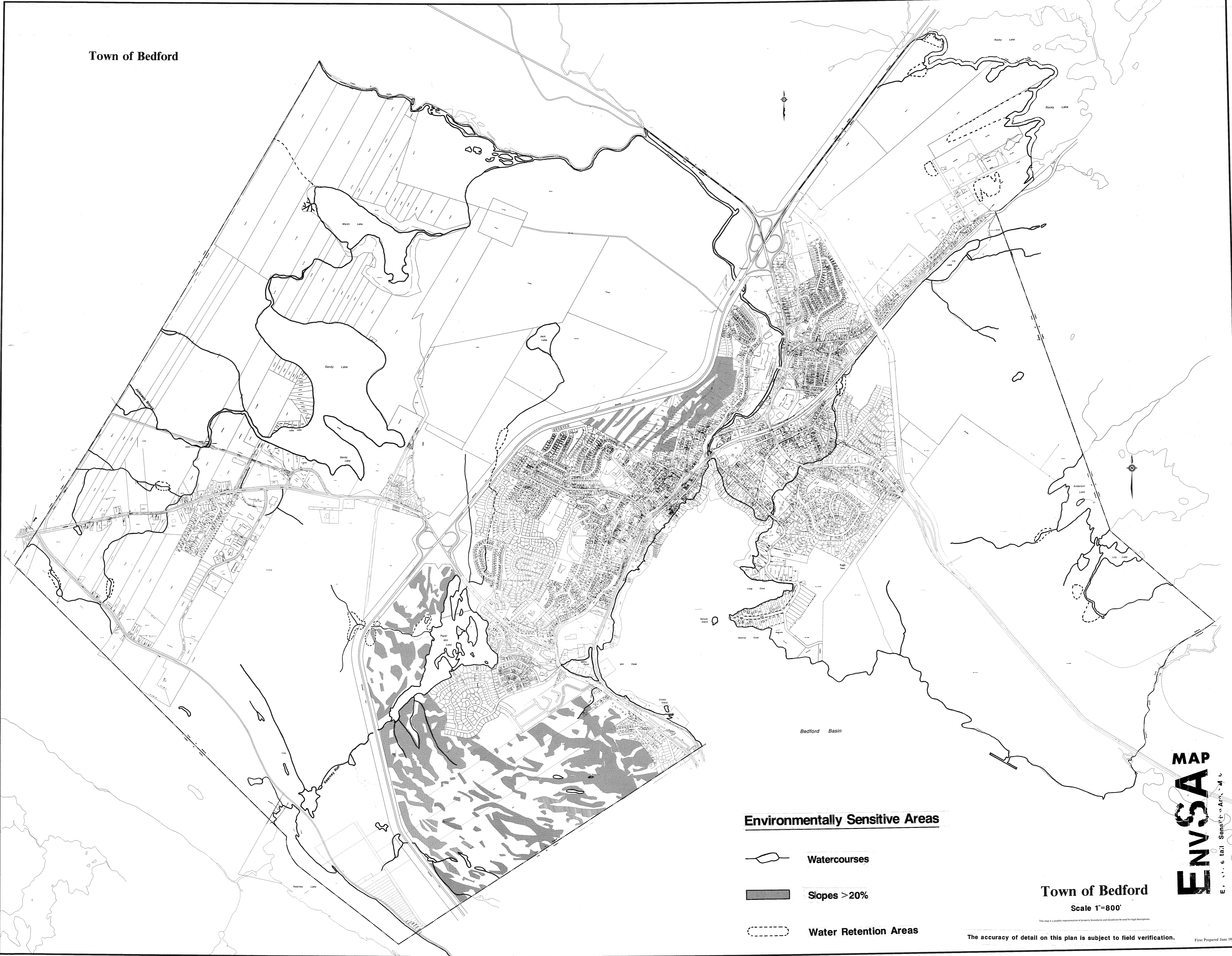


Town of Bedford



Environmentally Sensitive Areas

 Watercourses

 Slopes > 20%

 Water Retention Areas

Town of Bedford

Scale 1"=800'

The accuracy of detail on this plan is subject to field verification.

ENVS A MAP
Environmental Services, Inc.
E. 1116 Main St., Montpelier, VT 05602

First Prepared June 1986