



# **HALIFAX** GREEN NETWORK PLAN

---

## **Halifax Green Network Plan Map Primer — Values Maps**

March 2017

DRAFT

Prepared for  
**Halifax Regional Municipality**

**HALIFAX**

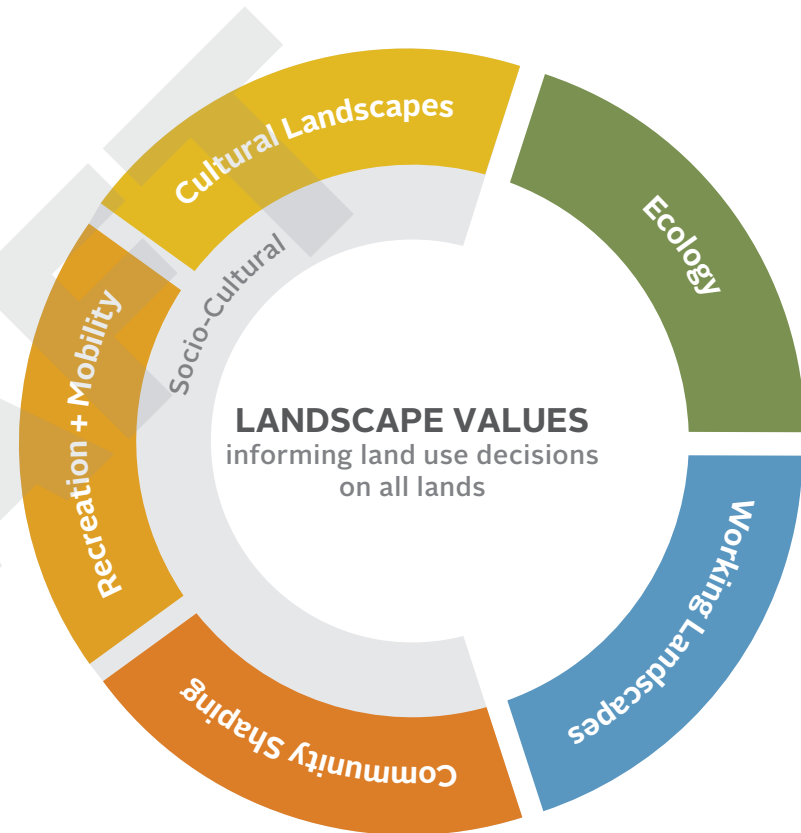
Prepared by  
**O2 Planning + Design Inc.**

**O2**

## Values Maps Explanation

The draft directions in the HGNP Primer were informed by a detailed analysis of socio-cultural, ecological and working landscape values. This document provides an explanation and lists the values used to create the value maps presented here and in the HGNP Primer. Locations with a greater saturation of colour have more themes present in that area. Stakeholder workshops were held to review and discuss the results of this analysis and their input is reflected in the mapping.

Open space values are mapped across the entire region and are available in GIS format with a high degree of spatial resolution. This information can be referenced by planners, landowners and development proponents to better inform land-use changes, decision-making and design. Wherever feasible, the impacts of development on areas with high open space values should be avoided or mitigated.



## Ecological Landscape Values (Map 2)

### About the Map

There were 24 ecological valued elements mapped in the region. These included values such as areas of important biodiversity, rare forests, natural patches, wetlands, surficial geology, and riparian areas. These elements were ranked based on their importance. The ranked values were summed across the region to give a total ranked value as shown in **Map 2**. This map highlights areas important from an ecological perspective. In this map, darker regions represent more overlapping ecological values in that area.

### Map Data Layers

#### Important Biodiversity Areas

Jack Pine Barrens

Large Natural Patches (500-1000ha)

Large Natural Patches (1000-5000ha)

Large Natural Patches (>5000ha)

Mature Forests (>100 years old)

Rare Forest Patches

#### Rare Surficial Geology

Riparian Areas

Wetlands

Endangered Moose Habitat

Important Bird Areas

Observed Species of Concern

Provincially Significant Habitats

Salmon Habitat (100m buffer)

Connectivity Pinch Points

Essential Connectivity Regions

Existing Wells

Protected Water Supply Areas

Shallow Water Tables (<2m to surface)

Seawater Intrusion Zones

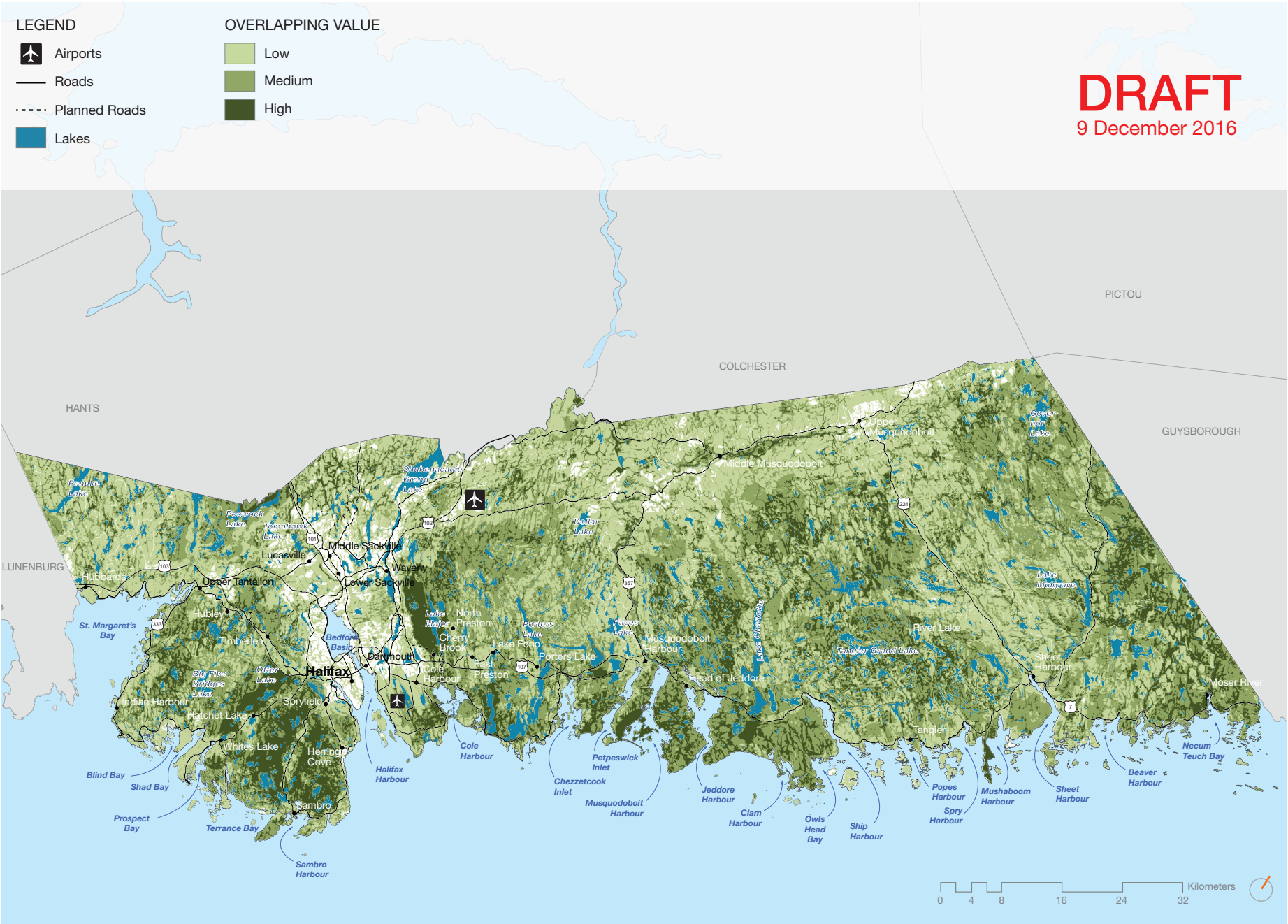
Surficial Aquifers

Tertiary Watersheds (containing Saltwater Wetlands)

Watersheds With Low Human Footprint

**Disclaimer:** This map was developed from the best available sources and constitutes a graphic representation of these data sources. O2 Planning + Design and/or any other entity are in no way responsible for or liable for any misrepresentation or re-use of this map. Distribution of this map is intended for information purposes only and should not be considered authoritative for engineering, legal and other site-specific uses.

Map 2: Ecological Landscape Values





# Working Landscape Values (Map 3)

## About the Map

There were 10 working landscape valued elements mapped in the region. These included valued elements such as the industrial harbour, agricultural areas, aggregate quarries, mineral leases, forestry areas, and major transportation routes. Each of these elements were ranked based on their importance. These ranked values were summed across the region to give a total ranked value as shown in **Map 3**. In this map, darker regions represent more overlapping working landscape values in that area.

## Map Data Layers

Aggregate Quarries  
Mineral Leases

Industrial Harbour Areas

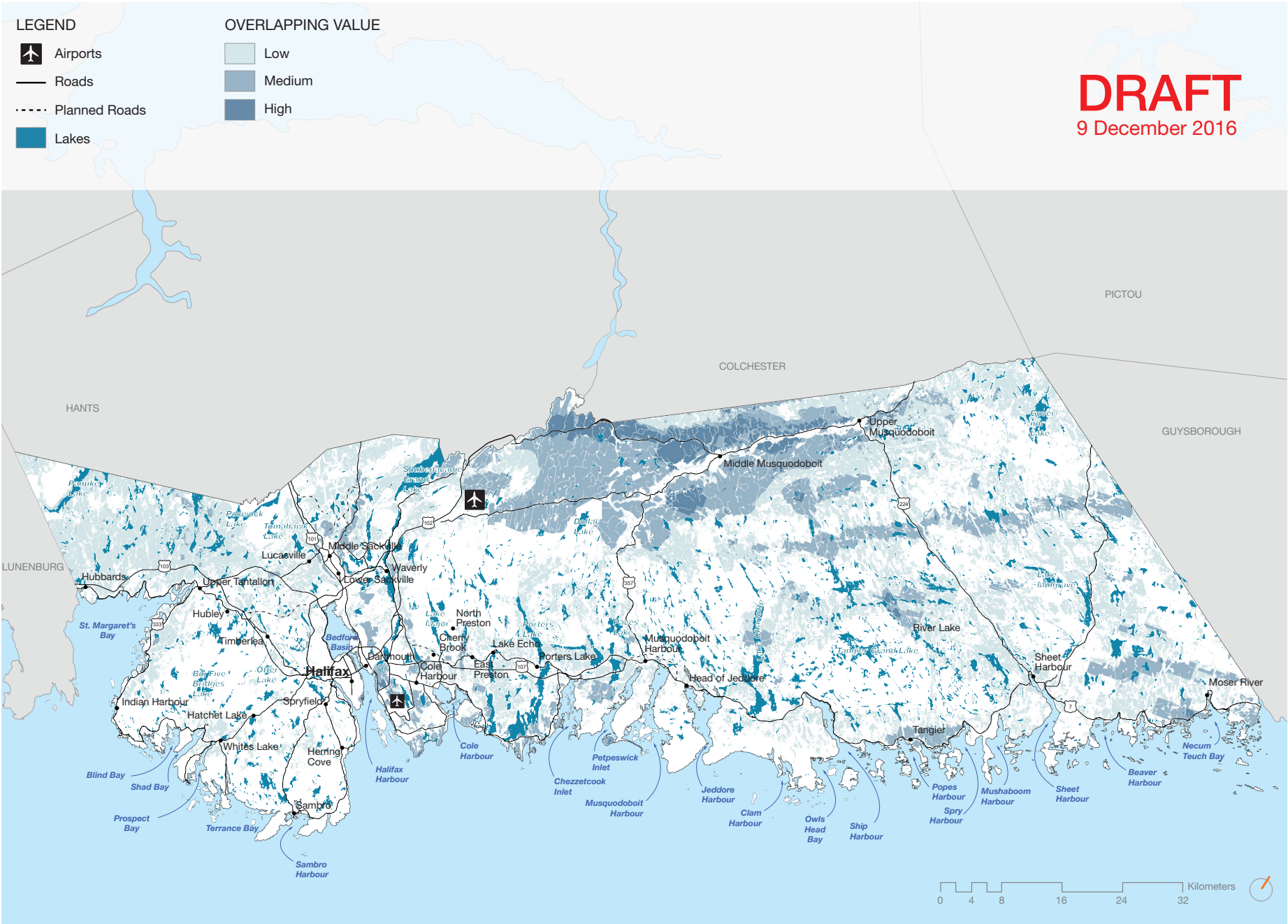
Agricultural Potential (Moderate)  
Agricultural Potential (Moderate-Severe)

Softwood Capability (4.6-6.5m³/year)  
Softwood Capability (6.6-8.5m³/year)

Major Transportation Routes  
Future Transportation Routes  
Utility Corridors

**Disclaimer:** *This map was developed from the best available sources and constitutes a graphic representation of these data sources. O2 Planning + Design and/or any other entity are in no way responsible for or liable for any misrepresentation or re-use of this map. Distribution of this map is intended for information purposes only and should not be considered authoritative for engineering, legal and other site-specific uses.*

Map 3: Working Landscape Values



## Socio-Cultural Landscape Values (Map 4)

### About the Map

There were 39 socio-cultural valued elements mapped in the region. These included valued elements such as trails, parks, natural resources, areas of archaeological significance, water routes, culturally significant areas, coastal areas, beaches, nature reserves etc. Each of these elements were ranked based on their importance. The ranked values were summed across the region to give a total ranked value as shown in **Map 4**. In this map, darker regions represent more overlapping socio-cultural values in that area.

### Map Data Layers

Areas of Archaeological Significance  
Commemorative Sites  
Culturally Significant Locations  
Culturally Significant Viewsheds  
Districts  
Heritage Regulation Areas  
High Potential Visibility  
Historical Ethnic Settlements  
Historical Indigenous Use  
Significant Urban Landscapes  
Sites of Worship

Edges (with development restrictions)  
Edges (no development restrictions)  
Land Trust / Easement  
Near-Urban Natural Areas

Culturally Significant Landscapes  
Culturally Significant Natural Features  
Culturally Significant Natural Resources  
Essential Urban Green Spaces  
Estates and Gardens  
Nature Reserves  
Parks  
Provincial Parks  
Wilderness Area  
Urban Forest Patches

ATV Trails  
Culturally Significant Corridors  
Culturally Significant Nodes  
Culturally Significant Travelways  
Trails  
Transportation Corridors

Boat Facilities/Access  
Coastal Areas  
Inland Water Routes  
Lakes  
Waterscapes

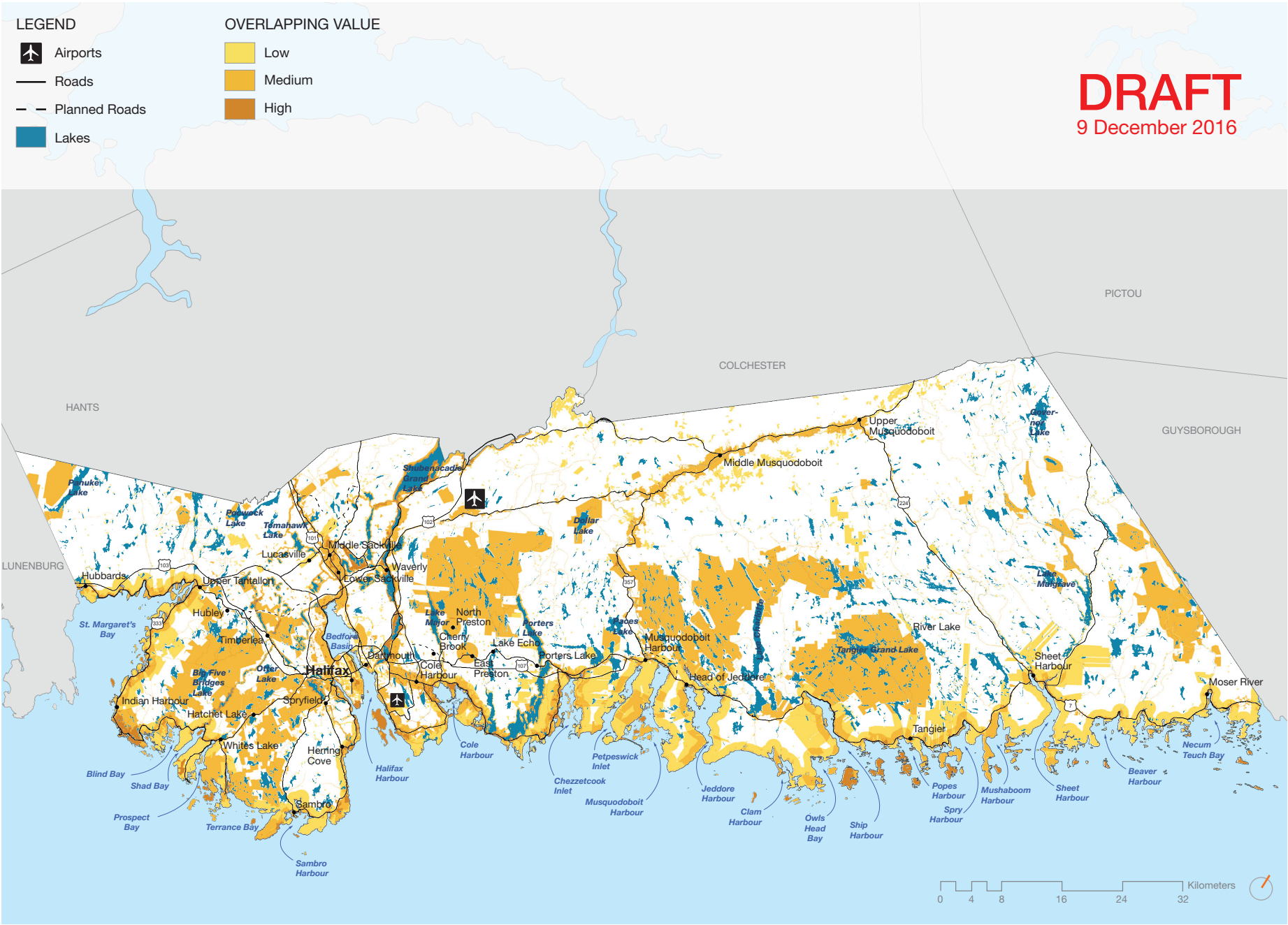
Public Beaches  
Publicly Accessible Shoreline

Military Use Areas

**Disclaimer:** *This map was developed from the best available sources and constitutes a graphic representation of these data sources. O2 Planning + Design and/or any other entity are in no way responsible for or liable for any misrepresentation or re-use of this map. Distribution of this map is intended for information purposes only and should not be considered authoritative for engineering, legal and other site-specific uses.*



Map 4: Socio-Cultural Landscape Values



# Summed Values (Map 5)

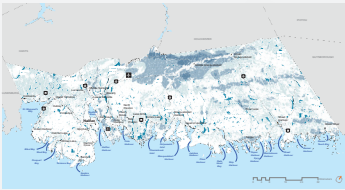
## About the Map

Map 5 shows the summation of summed value maps (Maps 2, 3, 4) for the three themes. As with maps 2 to 4, the darker regions represent multiple overlapping values.

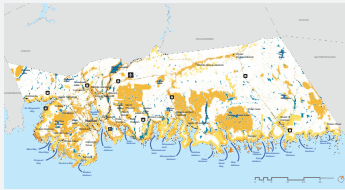
**ECOLOGICAL  
LANDSCAPE VALUES**  
Data Layers



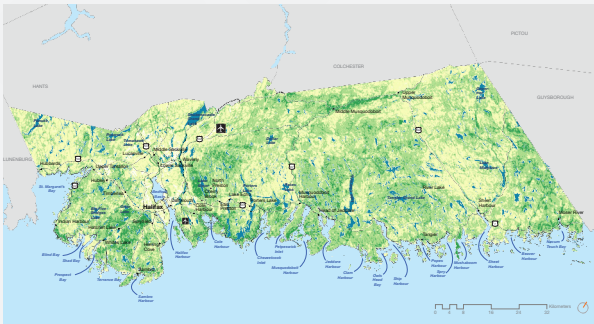
**WORKING  
LANDSCAPE VALUES**  
Data Layers



**SOCIO-CULTURAL  
LANDSCAPE VALUES**  
Data Layers

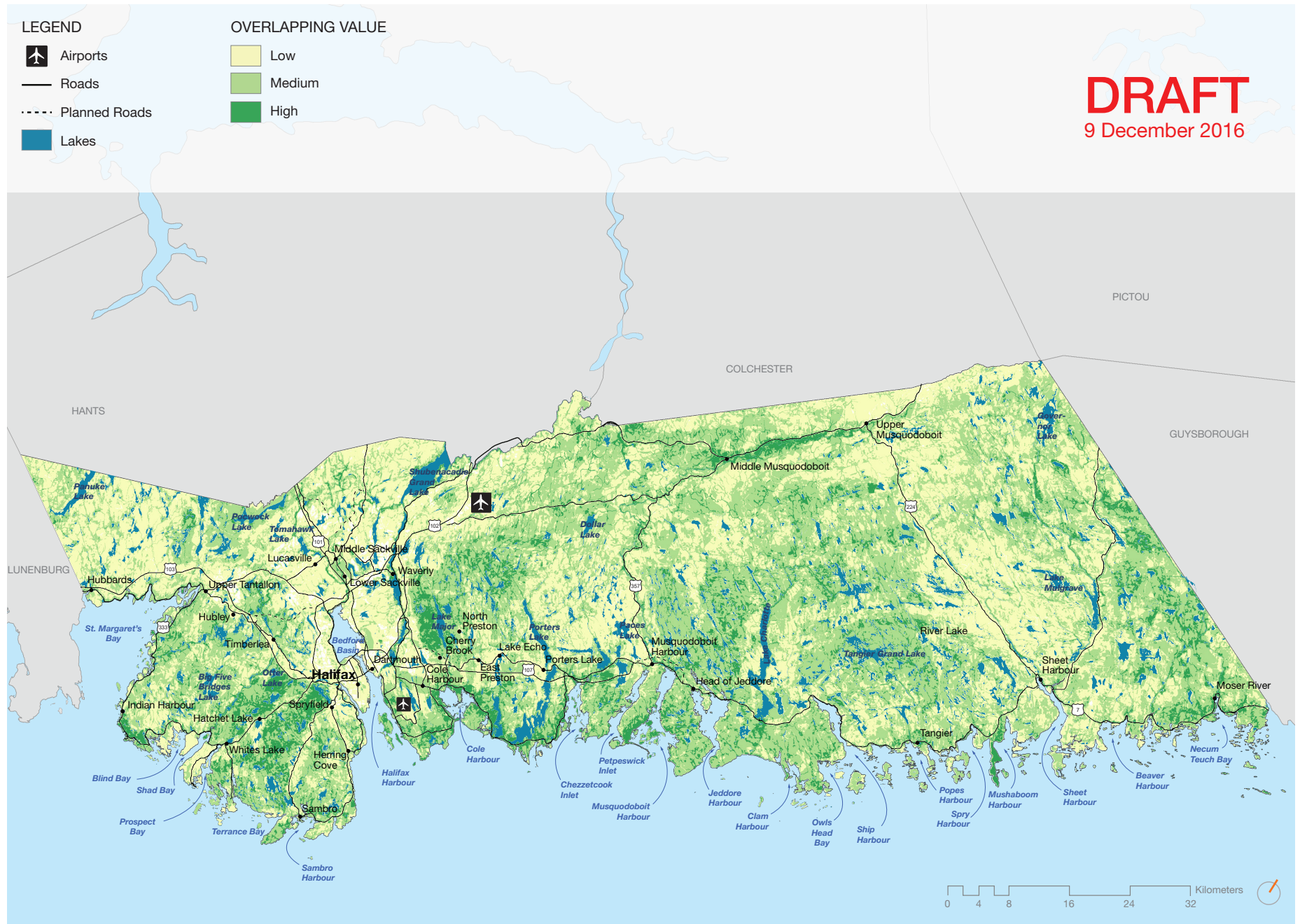


**= SUMMED VALUES MAP**



**Disclaimer:** This map was developed from the best available sources and constitutes a graphic representation of these data sources. O2 Planning + Design and/or any other entity are in no way responsible for or liable for any misrepresentation or re-use of this map. Distribution of this map is intended for information purposes only and should not be considered authoritative for engineering, legal and other site-specific uses.

Map 5: Summed Values



DRAFT

**HALIFAX**  
GREEN NETWORK PLAN