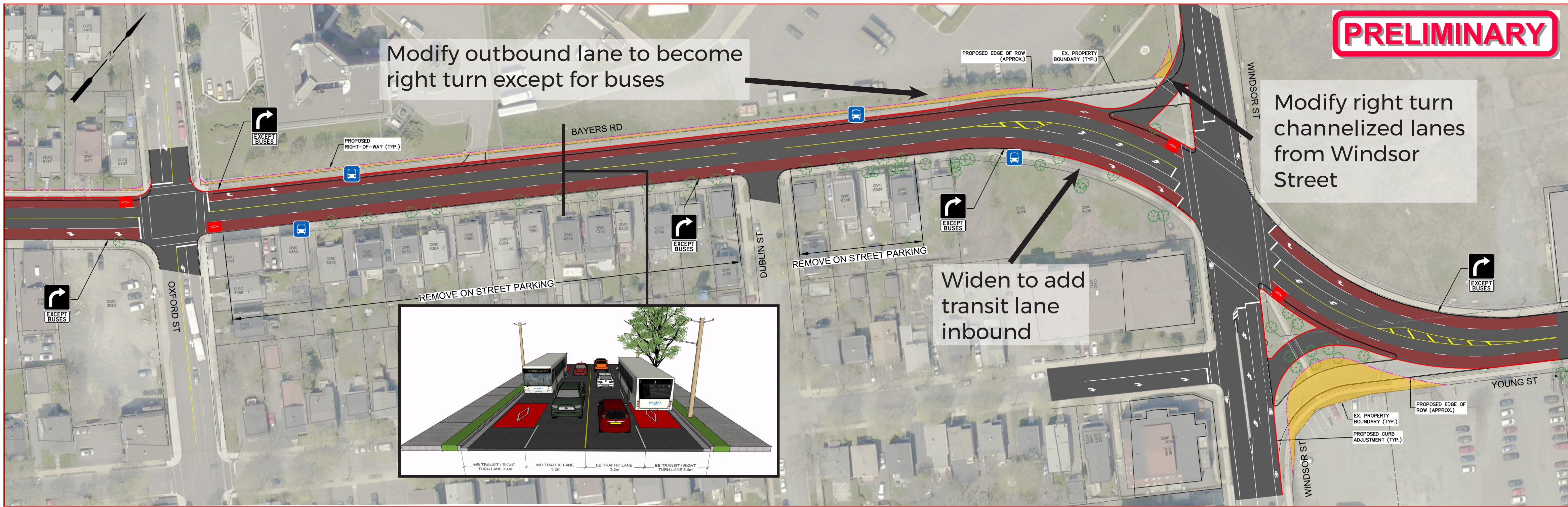


# BAYERS RD. - OXFORD ST. TO WINDSOR ST.

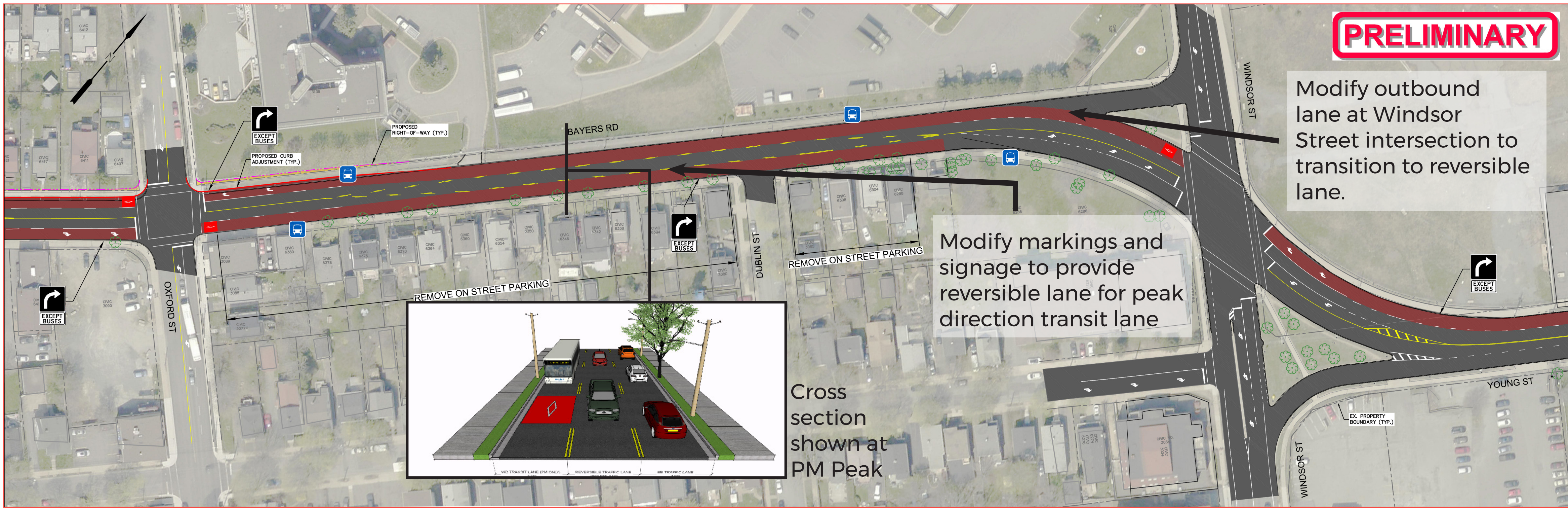
## OPTION 1 - HIGH INVESTMENT: DEDICATED BUS LANES (BOTH DIRECTIONS)



IMPACTS
Significant improvements to the flow of public transit inbound and outbound.
Fewer outbound lanes available for the corridor segment (Windsor to Oxford).
No impact
Reduced time available for on street parking.
Slight road widening may impact properties along the corridor.

PROS
<ul style="list-style-type: none"><li>Will significantly improve transit movement, particularly during PM peak periods.</li><li>Improve right-turn movement from Bayers Rd. to Oxford St. and Bayers Rd. to Windsor St.</li><li>Improves visibility of right-turns at Windsor/ Bayers/ Young intersection.</li><li>More land available at Windsor/Bayers/ Young intersection for streetscaping.</li></ul>
CONS
<ul style="list-style-type: none"><li>Road widening is required and may impact properties along the corridor.</li><li>Fewer travel lanes for through-moving vehicles on Bayers Rd.</li><li>Reduced time available for on-street parking.</li></ul>

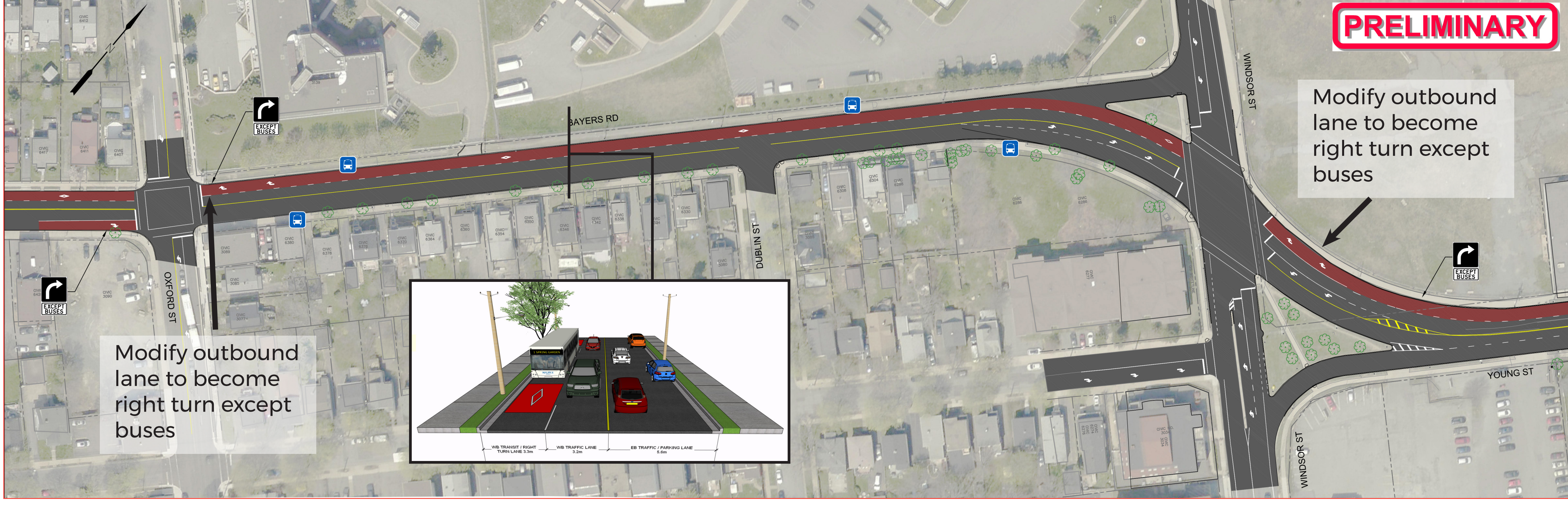
## OPTION 2 - MEDIUM INVESTMENT: PEAK DIRECTION ‘REVERSIBLE’ BUS LANES



IMPACTS
Improvements to the flow of public transit during peak periods.
Fewer outbound lanes available for the corridor segment (Windsor to Oxford).
No impact
Reduced time available for on street parking.
No major impacts

PROS
<ul style="list-style-type: none"><li>Will significantly improve transit movement, particularly during PM peak periods.</li><li>Improve right-turn movement from Bayers to Oxford during PM peak.</li><li>Significantly less road widening required (reduction in property impacts).</li></ul>
CONS
<ul style="list-style-type: none"><li>Will reduce benefit to transit in off-peak direction.</li><li>Fewer travel lanes for through-moving vehicles on Bayers Road.</li><li>Reduced time available for on street parking.</li></ul>

## OPTION 3 - LOW INVESTMENT: WESTBOUND (OUTBOUND) DEDICATED BUS LANE



IMPACTS
Minimally improves flow of public transit.
Fewer outbound lanes available for the corridor segment (Windsor to Oxford).
No impact
Modified parking restrictions.
No impact

PROS
<ul style="list-style-type: none"><li>Will improve transit movement in outbound direction, particularly during PM peak periods.</li><li>Improve right-turn movement from Bayers to Oxford during PM peak.</li><li>No road widening required.</li><li>No on street parking impacts.</li></ul>
CONS
<ul style="list-style-type: none"><li>Minimal improvement for public transit relative to existing conditions.</li><li>Fewer travel lanes for through-moving vehicles on Bayers Road.</li><li>Potential parking loss.</li></ul>