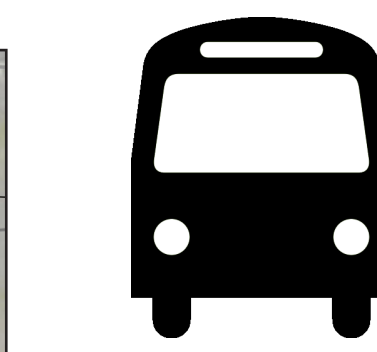
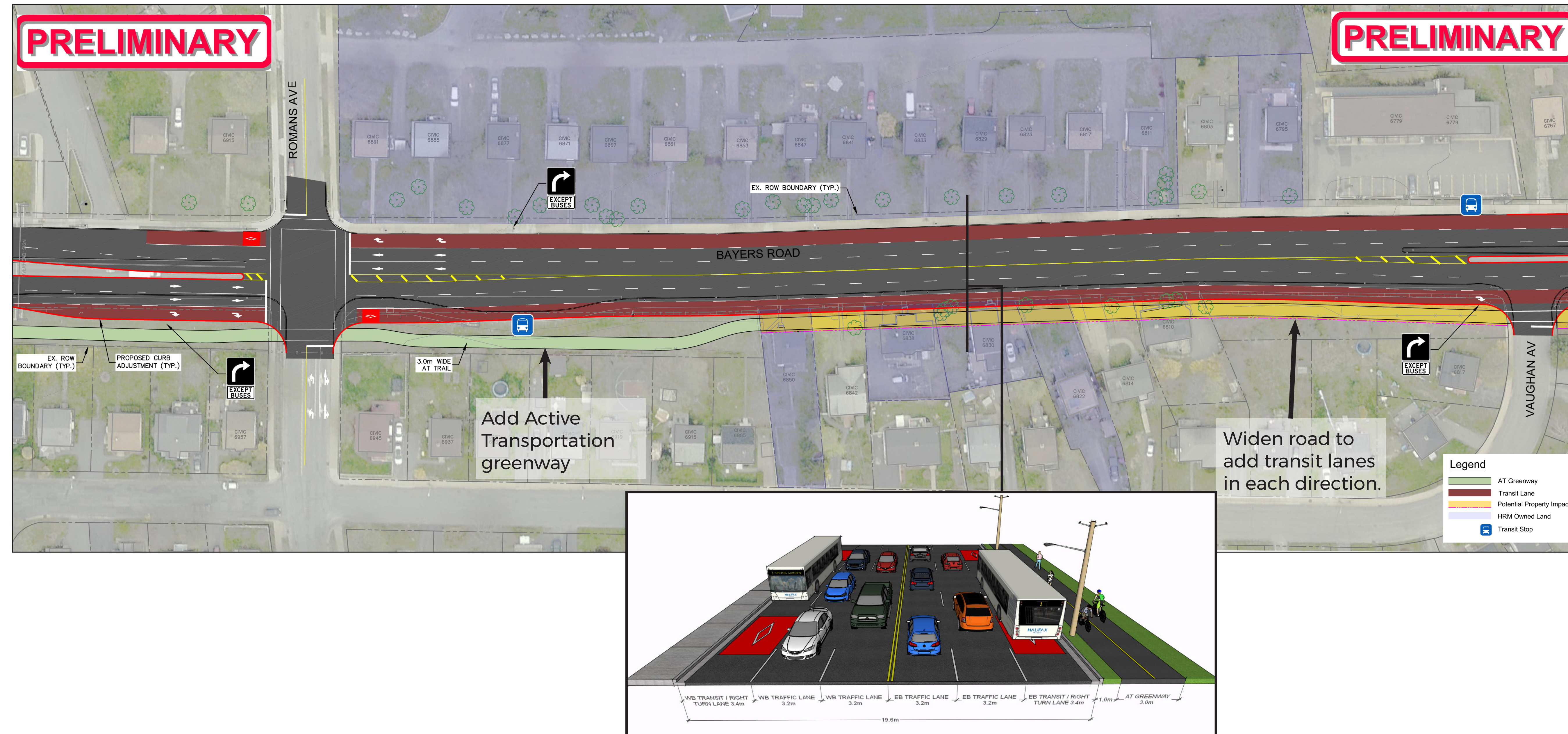


BAYERS RD. - ROMANS AVE. TO HALIFAX SHOPPING CENTRE

OPTION 1 - HIGH INVESTMENT: DEDICATED BUS LANES (BOTH DIRECTIONS)



Significant improvements to the flow of public transit.



No major impacts. Slight improvement to traffic flow expected.



New 3m off-street AT greenway.



No impact.



Impacts to properties along the corridor due to required road widening.

IMPACTS

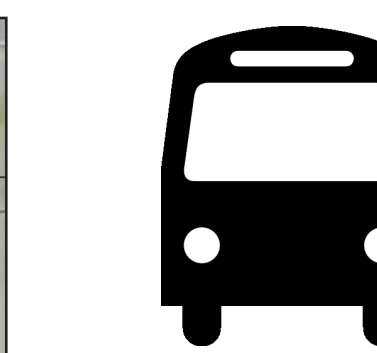
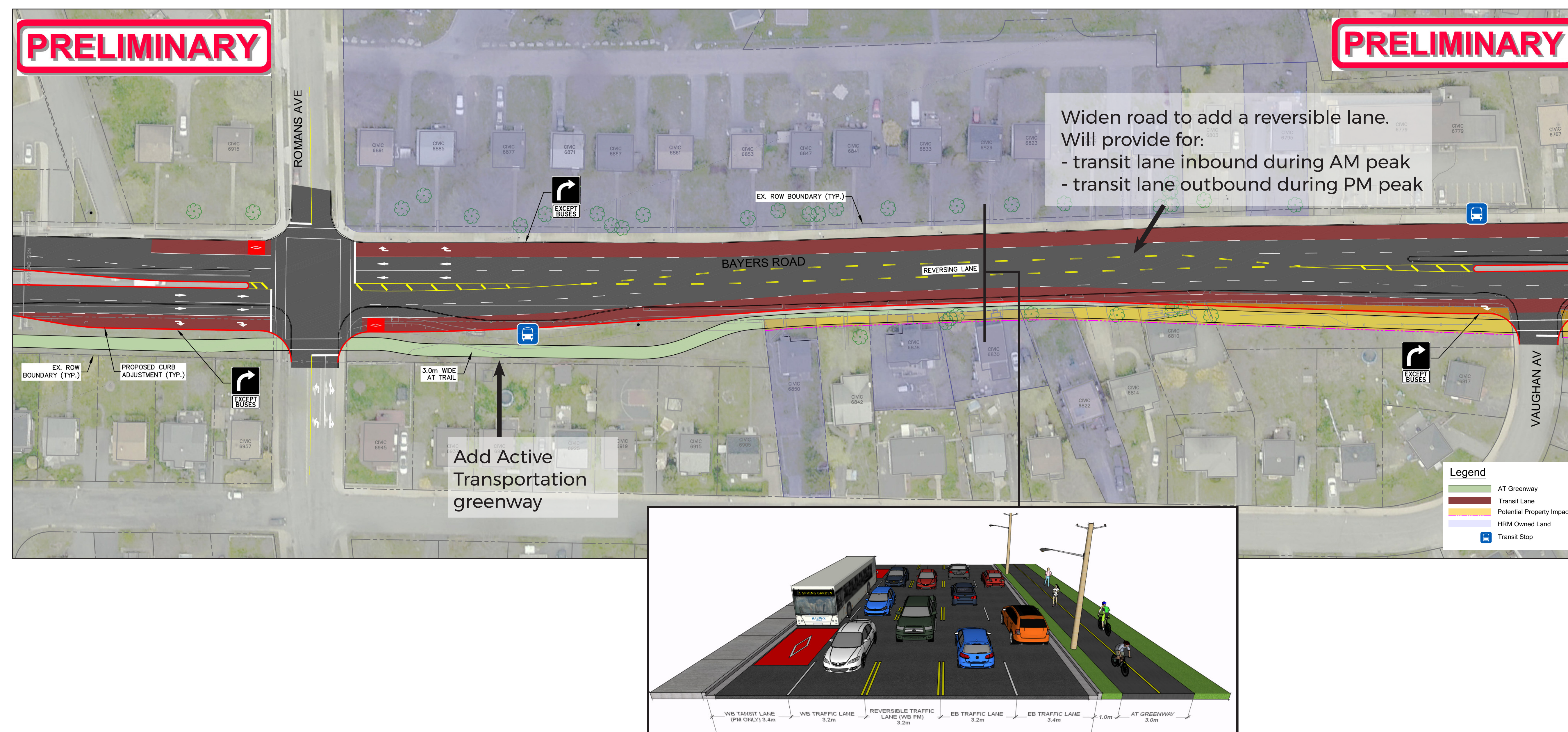
PROS

- Will significantly improve transit movement in both directions at all times.
- Improves right-turn movement Bayers to Romans.
- Provides new AT greenway.

CONS

- Requires roadway expansion.
- Impacts residential properties along the corridor.

OPTION 2 - MEDIUM INVESTMENT: PEAK DIRECTION 'REVERSIBLE' BUS LANES



Improvement to the flow of public transit.



No major impacts. Slight improvement expected.



New 3m off-street AT greenway.



No impact.



Impacts to properties along the corridor, but to a lesser extent than Option A (due to a reduced widening requirement).

IMPACTS

PROS

- Will improve transit movement in peak direction only.
- Improves right-turn movement Bayers to Romans.
- Provides new AT greenway.
- Lower impacts on adjacent residential properties along the corridor.

CONS

- Requires roadway expansion.
- Only prioritizes transit one way (peak direction).

Cross Section shown at PM Peak