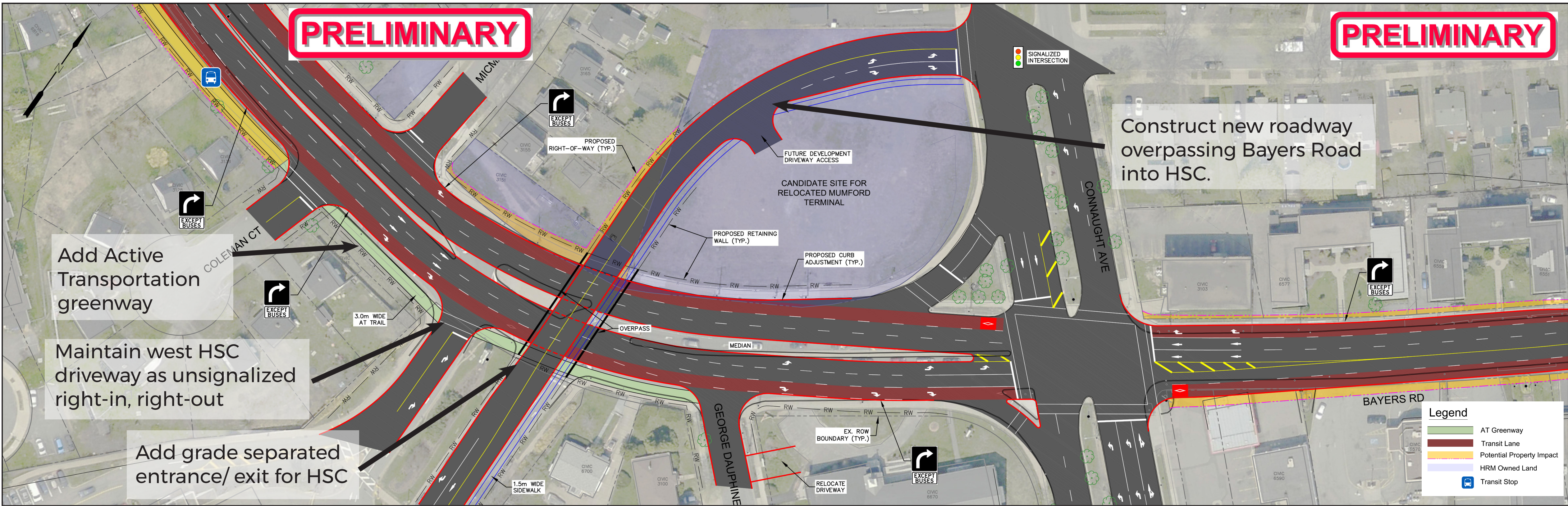


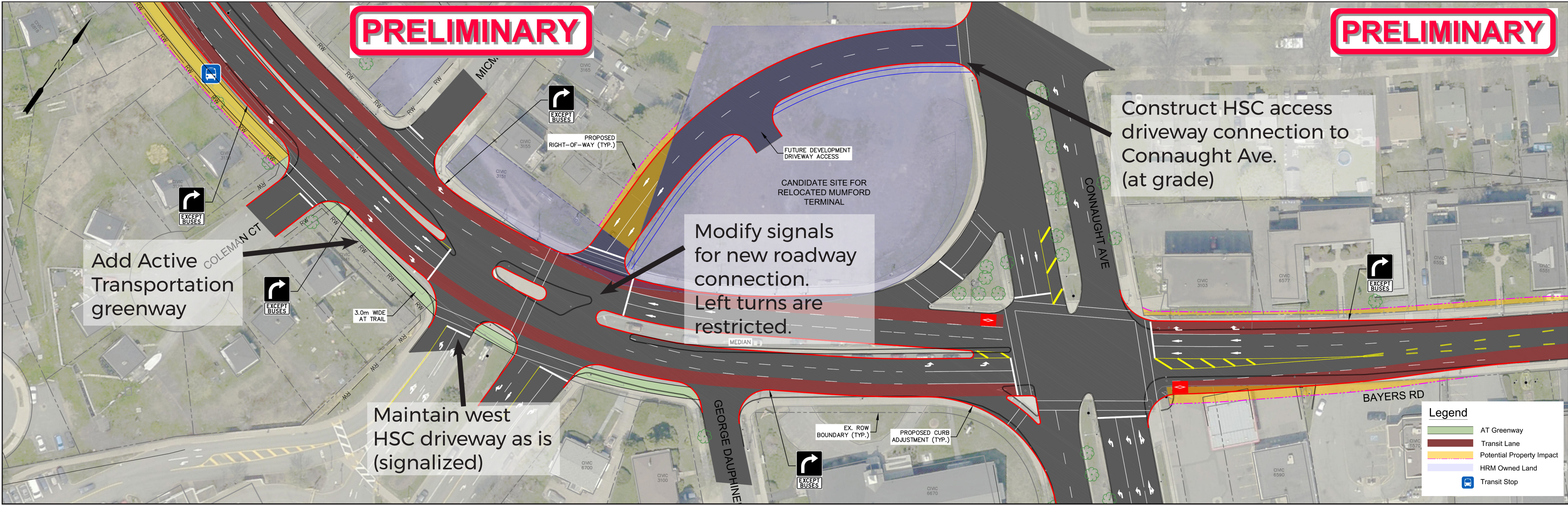
BAYERS RD. - HALIFAX SHOPPING CENTRE TO CONNAUGHT AVE.

OPTION 1 - HIGH INVESTMENT: MODIFIED HALIFAX SHOPPING CENTRE DRIVEWAY (WITH BRIDGE) AND DEDICATED BUS LANES (BOTH DIRECTIONS)



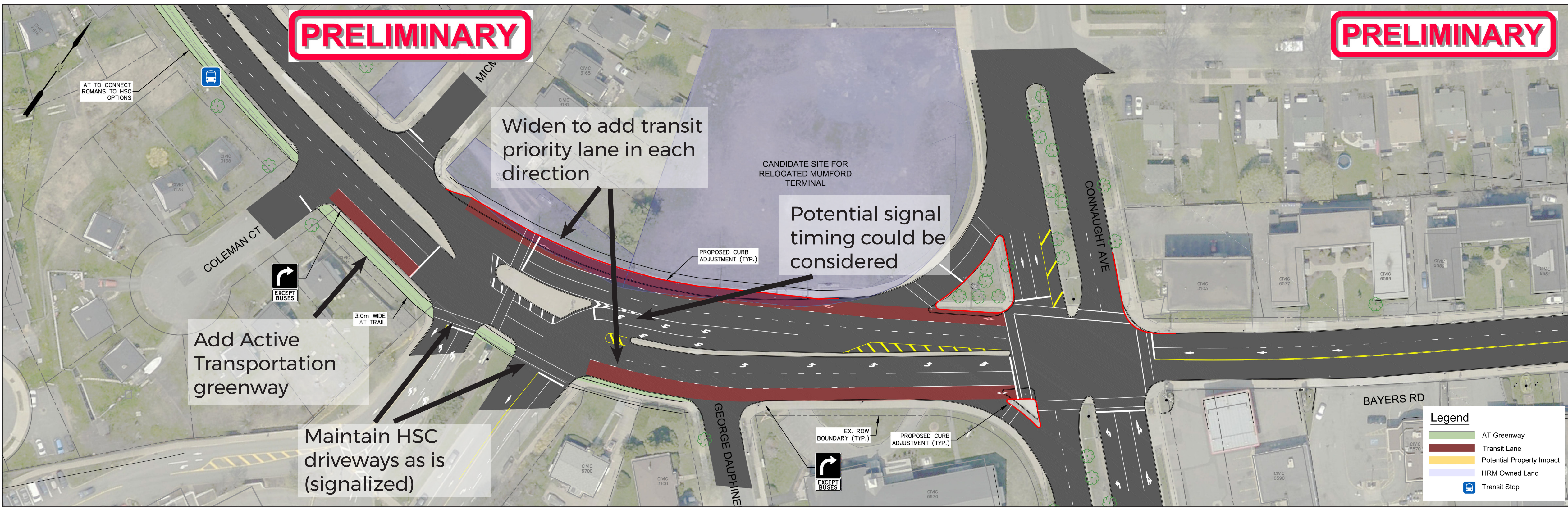
IMPACTS		PROS
 	Significant improvements to the flow of public transit.	<ul style="list-style-type: none">Will significantly improve transit movement via transit lanes.Reduces merging conflicts into Halifax Shopping Centre.Alleviates queuing impacts by removing signal at HSC.Provides new Active Transportation greenway.
	Significant improvement of traffic flow with removal of HSC signals.	
	New 3m off-street AT greenway. Grade separated crossing of Bayers Road.	
	No impact.	
Properties will be impacted to allow for roadway adjustments.		CONS <ul style="list-style-type: none">High level of investment (cost).High level of impact to adjacent properties.Prolonged disruption during construction.

OPTION 2 - MEDIUM INVESTMENT: MODIFIED HALIFAX SHOPPING CENTRE DRIVEWAY (REALIGNED INTERSECTION) AND DEDICATED BUS LANES (BOTH DIRECTIONS)



IMPACTS		PROS
 	Significant improvements to the flow of public transit.	<ul style="list-style-type: none">Will significantly improve transit movement via transit lanes.Reduces merging conflicts into HSC.Eases through-moving traffic between Connaught and HSC.Provides new AT greenway.
	Improvement of traffic flow with intersection re-alignment.	
	New 3m off-street AT greenway.	
	No impact.	
Properties will be impacted to allow for roadway adjustments.		CONS <ul style="list-style-type: none">Maintains close signal spacing along Bayers Road.Moderate level of impact to adjacent properties.

OPTION 3 - LOW INVESTMENT: DEDICATED BUS LANES (BOTH DIRECTIONS)



IMPACTS		PROS
 	Moderate improvements to the flow of public transit.	<ul style="list-style-type: none">Will move public transit more effectively than what is currently in place.Provides new AT greenway.Reduced impacts to adjacent properties.
	No major impacts to traffic flow. Slight improvement expected.	
	New 3m off-street AT greenway.	
	No impact.	
Slight impacts to properties with AT trail.		CONS <ul style="list-style-type: none">Does not improve transit operations at Connaught Ave. in the outbound direction.Will not address queuing and merging issues caused by closely spaced intersections.