



# **LAND USE BY-LAW**

## **PLANNING DISTRICT 5 (CHEBUCTO PENINSULA)**

**THIS COPY IS A  
REPRINT OF THE  
LAND USE BY-LAW  
WITH AMENDMENTS TO  
FEBRUARY 25, 2017**

LAND USE BY-LAW  
FOR  
PLANNING DISTRICT 5 (CHEBUCTO PENINSULA)

**THIS IS TO CERTIFY** that this is a true copy of the Land Use By-law for Planning District 5 (Chebucto Peninsula) which was passed by a majority vote of the former Halifax County Municipality at a duly called meeting held on the 5th day of December, 1994, and approved with amendments by the Minister of Municipal Affairs on the 9th day of February, 1995, which includes all amendments thereto which have been adopted by the Halifax Regional Municipality and are in effect as of the 25<sup>th</sup> day of February, 2017.

**GIVEN UNDER THE HAND** of the Municipal Clerk and under the seal of Halifax Regional Municipality this \_\_\_\_day of \_\_\_\_\_, 201\_\_.

\_\_\_\_\_  
Municipal Clerk

HALIFAX REGIONAL MUNICIPALITY  
LAND USE BY-LAW FOR  
PLANNING DISTRICT 5 (CHEBUCTO PENINSULA)  
FEBRUARY 1995

A by-law to regulate the use of land and the erection and use of buildings and structures, and to regulate the height, bulk, location, size, spacing, character and use of buildings and structures within the Planning District 5 (Chebucto Peninsula) Plan Area of Halifax County Municipality in the Province of Nova Scotia.

The Planning Act provides in Section 43(2) that “no development shall be undertaken where a land use bylaw passed under this Act is in effect unless a development permit issued by the development officer has been obtained “ and,

according to Section 1(e) of this Act, “development includes any erection, construction, addition, alteration, replacement or relocation of or to any building or structure and any change or alteration in the use made of land, buildings or structures”.

***Please note that HRM Council at its meeting on May 9, 2000, approved a motion to insert the following notation in the Land Use By-law as follows:***

***The provisions of the zones described in this by-law do not apply to property owned or occupied by Her Majesty the Queen in right of the Province of Nova Scotia or Canada in respect of a use of the property made by the Crown. Where a privately owned or occupied property is to be used for a federally regulated activity, the federal jurisdiction may, depending on the particular circumstances, override the requirements of this bylaw.***

This document has been prepared for convenience only and incorporates amendments made by the Council of Halifax County Municipality on the 5th day of December, 1994 and includes the Ministerial modifications which accompanied the approval of the Minister of Municipal Affairs on the 9th day of February, 1995. Amendments made after this approval date may not necessarily be included and for accurate reference, recourse should be made to the original documents.

# TABLE OF CONTENTS

-i-

	PAGE
PART 1: Title	1
PART 2: Definitions	1
PART 3: Zones and Zoning Maps	12
PART 4: General Provisions for All Zones	16
PART 5: Signs	37
PART 6: R-1 (Single Unit Dwelling) Zone	40
PART 7: R-2 (Two Unit Dwelling) Zone	42
PART 8: R-2a (Residential Home Occupation) Zone	44
<b>PART 8A: R-2b (Residential Equine) ZONE (RC-Mar 2/10;E-Apr 17/10)</b>	<b>46</b>
PART 9: R-6 (Rural Residential) Zone	47
PART 10: R-6a (Rural Mixed Residential) Zone	50
PART 11: <b>HCR (Herring Cove Residential) Zone (RC-Jun 25/14;E-Oct 18/14)</b>	<b>52</b>
PART 12: <b>V-1 (Harrietsfield Village Centre) Zone (RC-Jun 25/14;E-Oct 18/14)</b>	<b>54</b>
<del>PART 13: V-2 (Herring Cove Village Centre) Zone (Deleted:RC-Feb 13/01;E-May 5/01)</del>	
PART 14: V-3 (Ketch Harbour Village Centre) Zone	56
PART 15: V-4 (Sambro General Building) Zone	59
PART 16: C-1 (Local Business) Zone	60
PART 17: C-2 (General Business) Zone	62
PART 18: C-5 (Industrial Commercial Mix) Zone	65
PART 19: <b>F-1(Fishing Village) Zone (RC-Jun 25/14;E-Oct 18/14)</b>	<b>68</b>
PART 20: P-2 (Community Facility) Zone	69
PART 21: P-3 (Park) Zone	70
<b>PART 21A: RPK (Regional Park) Zone (RC-Jun 25/14;E-Oct 18/14)</b>	<b>71</b>
PART 22: P-4 (Conservation) Zone	72
<b>PART 22A: PA (Protected Area) Zone (RC-Jun 25/14;E-Oct 18/14)</b>	<b>73</b>
PART 23: P-5 (Special Facility) Zone	74
PART 24: D-1 (DND) Zone	75
<b>PART 25: UR (Urban Reserve) Zone (RC-Jun 25/14;E-Oct 18/14)</b>	<b>76</b>
<b>PART 25A: CD-1 (C&amp;D Materials Transfer Stations) Zone</b>	<b>77</b>
<b>PART 25B: CD-2 (C&amp;D Materials Processing Facilities) Zone</b>	<b>80</b>
<b>PART 25C: CD-3 (C&amp;D Materials Disposal Sites) Zone</b>	<b>82</b>
<b>PART 25D: ICH (Infrastructure Charge Holding) Zone</b>	<b>84</b>
PART 26: Administration	85
APPENDIX "A" Non-Conforming Uses	87
APPENDIX "B" Existing Businesses - No Expansion	89
APPENDIX "C" Existing Businesses - Expansion	90
Amendment Index	97

## **SCHEDULES**

<b>Schedule A</b>	<b>Chebucto Peninsula (Planning District 5) Zoning Map (RC-Jun 25/14;E-Oct 18/14)</b>	
<b>Schedule B</b>	<b>Areas of Elevated Archaeological Potential (RC-Jun 25/14;E-Oct 18/14)</b>	<b>92</b>
<b>Schedule C</b>	<b>Wetlands Over 2,000 Sq. Metres (RC-Jun 25/14;E-Oct 18/14)</b>	<b>93</b>
<b>Schedule D</b>	<b>Wind Energy Zoning (RC-Jun 25/14;E-Oct 18/14)</b>	<b>94</b>
<b>Schedule E</b>	<b>Areas Subject to Reduced Road Frontage Requirements (RC-Jan 10/17;E-Feb 25/17)</b>	<b>95</b>
<b>Schedule F</b>	<b>Shared Private Driveway Design Standards (RC-Jan 10/17;E-Feb 25/17)</b>	<b>96</b>

## LIST OF GENERAL PROVISIONS

4.1	Development Permits	16
4.2	Licenses, Permits and Compliance with Other By-laws	16
4.3	One Dwelling on a Lot	16
4.4	Separation Between Main Buildings	16
4.5	Existing Undersized Lots	17
4.6	Subdivision of Existing Lots	17
4.7	Reduced Frontage	17
<b>4.7A</b>	<b>Subdivision of Semi-Detached Dwellings</b>	<b>18</b>
4.8	Existing Buildings	18
4.9	Livestock	18
4.10	Existing Uses	18
4.11	Non-Conforming Uses	18
4.12	Accessory Uses Permitted	19
4.13	Accessory Buildings	19
<b>4.13A</b>	<b>Shipping Containers</b>	<b>20</b>
4.14	Auxiliary Dwelling Units	20
<b>4.15</b>	<b>Temporary Construction Uses Permitted</b>	<b>20</b>
4.16	Vehicle Bodies	21
4.17	Restoration to a Safe Condition	21
4.18	Building to be Moved	21
<b>4.19</b>	<b>Height Regulations (RC-Aug 16/11;E-Oct 29/11)</b>	<b>21</b>
<b>4.20</b>	<b>Watercourse Setbacks and Buffers (RC-Jun 25/14;E-Oct 18/14)</b>	<b>22</b>
<b>4.20A</b>	<b>Coastal Areas (RC-Jun 25/14;E-Oct 18/14)</b>	<b>23</b>
4.21	Reduced Frontage on a Curve	23
4.22	Daylighting Triangle	24
4.23	Permitted Encroachments	24
4.24	Yard Exception	24
4.25	Illumination	24
4.26	Commercial Motor Vehicles	24
4.27	Parking Requirements	25
<b>4.27A</b>	<b>Residential Driveway Access - Herring Cove Community</b>	<b>28</b>
4.28	Standards for Parking Lots	28
<b>4.28A</b>	<b>Bicycle Parking Facilities (RC-Jun 25/14;E-Oct 18/14)</b>	<b>28</b>
<b>4.28B</b>	<b>Location of Bicycle Parking (RC-Jun 25/14;E-Oct 18/14)</b>	<b>30</b>
<b>4.28C</b>	<b>Special Bicycle Parking Facility Requirements (RC-Jun 25/14;E-Oct 18/14)</b>	<b>30</b>
4.29	Composting Operations	30
4.30	Tourist Accommodations	31
<b>4.31</b>	<b>Schedule B - Areas of Elevated Archaeological Potential (RC-Jun 25/14;E-Oct 18/14)</b>	<b>31</b>
<b>4.32</b>	<b>Schedule C - Wetlands Map (RC-Jun 25/14;E-Oct 18/14)</b>	<b>31</b>
<b>4.33</b>	<b>Wind Energy Facilities (RC-Jun 25/14;E-Oct 18/14)</b>	<b>31</b>
<b>4.34</b>	<b>Public Transit Facilities (RC-Jun 25/14;E-Oct 18/14)</b>	<b>36</b>

## PART 1: TITLE

This By-law shall be cited as the "Land Use By-law for Planning District 5" within Halifax County Municipality.

## PART 2: DEFINITIONS

In this By-law the word "shall" is mandatory and not permissive. Words used in the present tense shall include the future; words used in the singular number shall include the plural and words used in the plural number shall include the singular. The word "used" shall include "intended to be used", "arranged" and "designed". All other words shall carry their customary meaning except for those defined hereinafter:

- 2.1 **ACCESSORY BUILDING OR STRUCTURE means a building or structure which is used exclusively for an accessory use and which is not attached in any way to the main building and which conforms with all applicable requirements of this by-law. (WRCC-Jun 26/95;E-Jul 22/95)**
- 2.2 **ACCESSORY USE means a use which is subordinate, normally incidental, and exclusively devoted to a main use or building permitted under the provisions of this by-law and, where residential uses are permitted by this by-law, shall include home occupations related to the domestic arts of cooking, sewing, tutoring or repairing household articles, or related to traditional crafts carried on within a dwelling without alteration to the dwelling and without devoting any space within the dwelling exclusively to such occupations. (WRCC-Jun 26/95;E-Jul 22/95)**
- 2.3 AGRICULTURAL USE means the use of land and buildings for the production of food, fibre or flora or the breeding and handling of animals and includes retail or market outlets for the sale of perishable agricultural goods or for the handling of animals, but shall not include any animal feedlot managed to maximum production and output in a confined area, slaughterhouse, piggery, broiler or poultry plant, or facility used for the growing of mushrooms.
- 2.4 ALTERATION means any change in the structural component or any increase in the volume of a building or structure.
- 2.5 ATTACHED BUILDING means a building otherwise complete in itself, which depends for structural support, or complete enclosure upon a division wall or walls shared in common with an adjacent building or buildings.
- 2.6 AUTOMOTIVE REPAIR OUTLET means a building or part of a building or a clearly defined space on a lot used for repair and service of motor vehicles and may include muffler, brake, radiator, engine, tire and glass replacement, wheel alignment, and other specialized activities directly related to the repair or alteration of motor vehicles but shall not include paint and body repairs, the manufacture or fabrication of motor vehicle parts for the purpose of sale, or the retailing of gasoline or other fuels.



- 2.7 BED AND BREAKFAST means a dwelling in which the proprietor supplies for monetary gain not more than six (6) rooms for sleeping accommodation with or without meals to the travelling public.
- 2.8 BUILDING means any structure, whether temporary or permanent, used or built for the shelter, accommodation or enclosure of persons, animals, materials or equipment and includes any vessel used for any of the foregoing purposes. (WRCC-Jun 24/02).
- 2.8A CANADIAN GEODETIC VERTICAL DATUM (CGVD28) means the vertical datum for Canada officially adopted by an Order in Council in 1935. CGVD28 is a tidal datum defined by the mean water level at five tide gauges: Yarmouth and Halifax on the Atlantic Ocean, Pointe-au-Père on the St-Lawrence River, and Vancouver and Prince-Rupert on the Pacific Ocean. In addition, the definition includes an elevation at a benchmark in Rouses Point, NY (next to Lake Champlain) accepted as fixed by the US and Canada in 1925. The datum is propagated in land using geodetic levelling measurements. The vertical datum is accessible through benchmarks anchored to the ground and stable structures. The heights in terms of CGVD28 are in normal-orthometric system. (RC-Jun 25/14;E-Oct 18/14)**
- 2.9 CEMETERY means the use of land or structures for the internment of human remains but shall not include the use of structures for cremation.
- 2.10 COMMERCIAL RECREATION USE means a building or lot or part of a building or lot used solely for commercial recreation or sport purposes and without limiting the generality of the foregoing, includes such establishments as rifle ranges, marinas, golf courses, miniature golf courses, amusement parks, diving centres, campgrounds, legions, fraternal centres, private clubs, racquet sports and health clubs, and may include a single or two unit dwelling for maintenance or security personnel, but does not include a track for the racing of any motorized vehicles or animals.
- 2.11 COMMERCIAL VEHICLE means any vehicle which is licensed as a commercial carrier as determined by the Registrar and with a registered vehicle weight of over three (3) tons.
- 2.11A COMPOSTING OPERATION means a public or private solid waste management facility where the waste is processed using composting technology which may include physical turning, windrowing, in-vessel, static pile aeration or other mechanical handling of organic matter and where the annual production of compost material exceeds 60 cubic metres. (MC-Feb 26/96;E-Mar 28/96)**
- 2.11AA CONSERVATION USE means any activity carried out for the purpose of conserving soils, water, vegetation, fish, shellfish, including wildlife sanctuaries and similar uses to the foregoing. (RC-Jun 25/14;E-Oct 18/14)**
- 2.11B CONSTRUCTION AND DEMOLITION MATERIALS, hereinafter referred to as C&D Materials, means materials which are normally used in the construction of buildings, structures, roadways, walls and landscaping features, and includes, but is not limited to, soil, asphalt, brick, concrete, ceramics, porcelain, window glass, mortar, drywall, plaster, cellulose, fiberglass fibres, lumber, wood, asphalt shingles**

and metals.

- 2.11C CONSTRUCTION AND DEMOLITION MATERIALS DISPOSAL SITE**, hereinafter referred to as a C&D Disposal Site, means land and /or buildings or part of a building where C&D Materials, or Residue remaining from C&D Processing Facilities, are disposed of by land application or burying, and shall not include the use of inert C&D materials, approved by Provincial Department of the Environment and Labour, for site rehabilitation within gravel pits and quarry operations licensed by the Province of Nova Scotia.
- 2.11D CONSTRUCTION AND DEMOLITION MATERIALS PROCESSING FACILITY**, hereinafter referred to as a C&D Processing Facility, means lands and/or buildings or part of a building used to sort, alter, grind, or otherwise process, C&D Materials for reuse or recycling into new products, and shall not include a Used Building Material Retail Outlet, an operation that processes inert C&D Materials on the site of generation and the material processed does not leave the site except for inert C&D Materials described in Sub-Section 9(3) of HRM C&D License By-law (L-200 and L-201), de-construction of a building on site, a municipal processing facility for used asphalt and concrete, or facilities associated with reclamation of a gravel pit or quarry operations licensed by the Province of Nova Scotia or forestry manufacturing processes.
- 2.11E CONSTRUCTION AND DEMOLITION MATERIALS TRANSFER STATION**, hereinafter referred to as a Transfer Station, means land and/or buildings or part of a building at which C&D Materials are received and sorted for subsequent transport to a C&D Disposal Site or a C&D Processing Facility. (RC-Sep 10/02;E-Nov 9/02).
- 2.12 CONVENIENCE STORE** means an establishment where food stuffs, tobacco, patent medicines, periodicals and other items of household convenience are kept for retail sale, and may include a takeout restaurant and/or video rental as an accessory function.
- 2.13 COUNCIL** means the Council of the Halifax County Municipality.
- 2.14 CRAFT SHOP** means a building or part of a building which is used for the retailing or wholesaling of arts and handicrafts and shall include the fabrication of arts and handicrafts.
- 2.15 DAY CARE FACILITY** means a building, part of a building or other place, whether known as a day nursery, nursery school, kindergarten, play school or by any other name, with or without stated educational purpose, the operator of which for compensation or otherwise, receives for temporary care or custody, on a daily or hourly basis, during all or part of the day, apart from parents, more than three (3) children not of common parentage and up to and including twelve (12) years of age; but does not include a nursery school or kindergarten conducted as part of a school, college, academy or other educational institution where instruction is given in Grades Primary to VII. (RC-Mar 3/09;E-Mar 21/09)

- 2.16 DAYLIGHTING TRIANGLE means the triangular shaped land which is that part of and within a corner lot, adjacent to the intersection of the front lot line and the flankage lot line, and which is measured, from such intersection and along each street line the distance required by this By-law and, along a straight line joining the points of the required distance along each street line. In the case of a through lot, a daylighting triangle shall also be adjacent to the intersection of the rear lot line and the flankage lot line and shall be measured from such intersection the distance required by this By-law and along a straight line joining the points of such distance.
- 2.17 DEVELOPMENT OFFICER means the officer of Halifax County Municipality from time to time charged by the Municipality with the duty of administering the provisions of this By-law
- 2.18 DWELLING
- (a) Dwelling means a building or part of a building, occupied or capable of being occupied as a home or residence by one or more persons, and containing one or more dwelling units but shall not include a hotel, a motel, apartment hotel or hostel.
  - (b) Dwelling Unit means one or more habitable rooms designed, occupied or intended for use by one or more persons as an independent and separate housekeeping establishment in which a kitchen, sleeping and sanitary facilities are provided for the exclusive use of such persons.
  - (c) Dwelling, Single Unit means a building which is a completely detached dwelling unit, and having a minimum width between any main walls of not less than twenty (20) feet (6.1 m).
  - (d) Dwelling, Two Unit means a building containing two dwelling units.
  - (e) Dwelling, Multiple Unit means a building containing three or more dwelling units.
  - (f) Dwelling, Rowhouse means a building that is divided vertically into three or more dwelling units, each of which is located on a separate lot and each of which has independent entrances to a front and rear yard immediately abutting the front and rear walls of the unit.
  - (g) Dwelling, Auxiliary means a self contained dwelling unit within a single unit dwelling which comprises less than thirty-five (35) per cent of the gross floor area of the dwelling.
  - (h) Dwelling, Mobile means any dwelling unit that is designed to made mobile on a temporary basis and having a width greater than thirteen (13) feet but no more than nineteen and one half (19.5) feet and a length no less than thirty-three (33) feet but no more than sixty-nine (69) feet.
  - (i) Dwelling, Semi-Detached means a building that is divided vertically into two dwelling units by means of an above-grade common wall of at least eight (8) feet in height which constitutes at least fifty (50) percent of the horizontal axis between the two units.
- 2.19 ERECT means to build, construct, reconstruct, alter, locate or relocate and, without limiting the generality of the foregoing, shall be taken to include any preliminary physical operation such as excavating, grading, piling, cribbing, filling or draining and structurally altering any existing building or structure by an addition, deletion, enlargement or extension.

- 2.20 ESTABLISHED GRADE means, with reference to a building, the average elevation of the finished surface of the ground where it meets the exterior of such building, and when used with reference to a structure, shall mean the average elevation of the finished grade of the ground immediately surrounding such structures, exclusive in both cases of any artificial embankment or entrenchment and when used with reference to a street, road or highway means the elevation of the street, road or highway established by the Municipality or other designed authority.
- 2.21 EXTRACTIVE FACILITIES means all buildings, aggregate plants, material storage areas and weigh scales associated with extractive uses but does not include structures or storage areas which are fundamental to the activities of mining or extraction.
- 2.22 EXISTING means legally in existence on the effective date of this By-law.
- 2.23 FISHERY USE means any use associated with a fishery use including fishery support uses, retail and wholesale outlets for fish and fish processing plants.
- 2.24 FISHERY SUPPORT USE means any use which is designed to support the individual fishery operations and includes boat and equipment storage and maintains his own gear, and shall include aquaculture support uses and the sale of an individual fisherman's catch, but does not include a retail or wholesale outlet for fish and fish products, or a fish processing plant except a smokehouse, lobster pound, or an operation where a fisherman himself, or his or her crew, processing their own catch.
- 2.25 FORESTRY USE means commercial silviculture and the production of timber or pulp and any uses associated with a forestry use, including sawmills, vehicle and equipment storage and maintenance buildings and yards and retail and wholesale outlets for wood and wood products.
- 2.26 GOLF COURSE means a public or private area operated for the purpose of playing golf and related activities, including a club house and administration building. The foregoing is specifically limited by excluding permanent residential accommodations of any type except a dwelling unit or dwelling units provided for maintenance or security personnel.
- 2.27 GROCERY STORE means a retail store in which articles for sale are restricted to a limited range of primarily food items such as milk, bread, soft drinks, ice cream, canned and bottled goods, snacks and candy, meat and to complement such items, may include the limited sale of magazines, books and records, housewares, toiletries, stationary, and tobacco products.
- 2.28 GROSS FLOOR AREA means the aggregate of the floor areas of a building above and below grade, measured between the exterior faces of the exterior walls of the building at each floor level but excluding car parking areas within the building; and for the purpose of this clause, the walls of an inner court shall be deemed to be exterior walls.
- 2.29 HEIGHT means the vertical distance of a building between the established grade and the highest point of the roof surface for flat, hip, or gable roofs, and to the deckline for mansard and gambrel roofs. In the case of multi-unit dwellings, height shall mean the

vertical distance of a building between the established grade and the highest point of the roof surface for flat roofs, and to one-quarter the height between the finished ceiling of the uppermost floor and the highest point of any other roof type, provided that no roof space is used for human habitation.

- 2.30 HOME OCCUPATION means any business, profession or trade carried on by the occupant of a dwelling unit as a secondary use of the property but shall not include auto body or repair shops, restaurants, or any retail or wholesale activities except for arts and handicrafts which are produced on the property.
- 2.31 HUNTING AND FISHING CAMPS includes structures used to temporarily accommodate persons engaged in hunting, trapping, fishing or other resource and recreational activities but shall not include a permanent dwelling.
- 2.31A INSTITUTIONAL USE means any use permitted in the P-2 (Community Facility) Zone. (RC-Sep 10/02;E-Nov 9/02).**
- 2.32 KENNEL means a building or structure used for the enclosure of more than two (2) dogs or cats which are kept for the purpose of commercial breeding with or without veterinary care.
- 2.33 LIMS means the Land Information and Management Service whose property identification numbering system is used in this By-law to identify particular land parcels. The LIMS is an agency of the Council of Maritime Premiers established on the authority of Order in Council of the Provinces of Nova Scotia, New Brunswick and Prince Edward Island under the Council of Maritime Premiers Act in order to produce comprehensive property and ownership mapping for the Provinces.
- 2.34 LIVESTOCK means horses, cows, pigs, sheep, goats and fowl, whether or not they are kept for commercial purposes.
- 2.35 LOT means any area of land or parcel described in a deed filed in the Office of the Registrar of Deeds for Halifax County on or before the 16th day of April, 1987, or is described in a plan and deed pursuant to the Land Titles Clarification Act, or is approved on a plan of subdivision endorsed and filed in the Office of the Registrar of Deeds for Halifax County.
- (a) Corner Lot means a lot situated at the intersection of, and abutting on, two (2) or more streets.
- (b) Through Lot means a lot bounded on two opposite sides by streets or highways provided, however, that if any lot qualifies as being both a corner lot and a through lot, as hereinbefore defined, such lot shall be deemed to be a Corner Lot for the purposes of this By-law.
- 2.36 LOT AREA means the total horizontal area within the lot lines of a lot.
- 2.37 LOT DEPTH means the horizontal distance between the front and rear lot lines. Where these lot lines are not parallel, the lot depth shall be the length of a line joining the mid-points of the front and rear lot lines.

- 2.38 LOT FRONTAGE means the horizontal distance between the side lot lines as measured along the front lot line. In the case of a corner lot with a daylighting triangle the front and flankage lot lines shall be deemed to extend to their hypothetical point of intersection for the purpose of calculating the frontage.
- 2.39 LOT LINE
- (a) Lot Line means a boundary or exterior line of a lot.
  - (b) Front Lot Line means the line dividing the lot from the street or from the private road; and
    - (i) in the case of a corner lot - the shorter boundary line abutting the street or private road shall be deemed to be the front lot line and the longer boundary line abutting the street or private road shall be deemed to be the flankage lot line; and where such lot lines are of equal length, the front lot line shall be either of the lot lines and the other lot line shall be the flankage lot line; boundaries dividing the lot from a street or private road shall be deemed to be the front lot line; or
    - (ii) in the case of a lot which has as one of its boundaries the shore line of a lake, the sea or the bank of a river, the lot line facing the access road shall be deemed to be the front lot line.
  - (c) Rear Lot Line means the lot line farthest from or opposite to the front lot line.
  - (d) Side Lot Line means a lot line other than a front or rear lot line.
  - (e) Flankage Lot Line means a side lot line which abuts the street or private road on a corner lot.
- 2.40 MAIN BUILDING means the building in which is carried on the principal purpose or purposes for which the building lot is used.
- 2.41 MAIN WALL means the exterior front, side or rear wall of a building and all structural members essential to the support of a fully or partially enclosed space or roof.
- 2.42 MAXIMUM LOT COVERAGE means that percentage of the lot area covered by all buildings above ground level, and shall not include that portion of such lot area which is occupied by a building or portion thereof which is completely below ground level, and for the purpose of this definition the maximum lot coverage in each zone shall be deemed to apply only to that portion of such lot which is located within said zone.
- 2.43 MUNICIPALITY means Halifax County Municipality.
- 2.44 OBNOXIOUS USE means a use which, by its nature or operation creates a nuisance or is offensive by the creation of noise or vibration, or by reason of toxicity, the emission of gas, fumes, dust, oil or objectionable odour, or by reason of the unsightly storage of goods, wares, merchandise, salvage, refuse matter, waste or other materials and shall include operations which produce effluent which cannot be disposed of by means of an on-site sewage disposal system or operations which involve, as the primary function, the processing, production or warehousing of dangerous goods or hazardous wastes.
- 2.45 OPEN SPACE USE means the use listed as an Open Space Use in the P-2 (Community Facility) Zone and shall exclude all buildings except those that are accessory to the use of



land as a park, playground or cemetery.

- 2.46 OPEN STORAGE means the storage of merchandise, goods, inventory, materials or equipment or other items which are not intended for immediate sale, by locating them on a lot exterior to a building.
- 2.47 OUTDOOR DISPLAY COURT means an area of land where goods are displayed which are available for sale to the general public from a retail outlet located on the same lot or on another lot. Without limiting the generality of the foregoing, an outdoor display court may include the display of cars, trucks, van, motor and mobile homes, trailers, boats, snowmobiles, motorcycles, swimming pools, decorative fountains and prefabricated cottages.
- 2.48 PARKING LOT means a building or structure or part of a building or structure or an open area containing parking spaces, other than a street, for two or more motor vehicles, available for public use or as an accommodation for clients, customers or residents and which has adjacent access to permit ingress or egress of motor vehicles to a street or private road by means of driveways, aisles or manoeuvring areas where no parking or storage of motor vehicles is permitted.
- 2.49 PARKING SPACE means an area of not less than one hundred sixty (160) square feet (15 sq.m.), measuring eight (8) feet (2.4 m.) by twenty (20) feet (6.1 m.), for the temporary parking or storage of motor vehicles, and which has adequate access to permit ingress and egress of motor vehicles to and from a street or private road by means of driveways, aisles or manoeuvring areas.
- 2.50 PERSON includes an individual, association, firm, partnership, corporation, trust, incorporated company, organization, trustee or agent, and the heirs, executors or other legal representatives of a person to whom the context can apply according to law.
- 2.51 PERSONAL SERVICE SHOP means a building or part of a building in which persons are employed in furnishing direct services and otherwise directly administering to the individual and personal needs of persons, and without limiting the generality of the foregoing, may include such establishments as barber shops, beauty parlours, automatic laundry shops, hairdressing shops, shoe repair and shoe shining, and tailoring, laundry and drycleaning collection depots and shops, but excludes the manufacturing or fabrication of goods for retail or wholesale distribution.
- 2.52 PRIVATE ROAD means any street or road which is not public which is shown as a private road on an approved plan of subdivision and the right-of-way, alignment and gradient is approved by the Department of Transportation and Communications.
- 2.53 PUBLIC PARK means a park owned or controlled by a public authority or by any board, commission or other authority established under any statute of the Province of Nova Scotia or Government of Canada.
- 2.54 **RECREATION USE means the use of land, buildings or structures for active or passive recreational purposes and may include indoor recreation facilities, sports fields, sports courts, playgrounds, multi-use trails, picnic areas, scenic view points**

**and similar uses to the foregoing, together with the necessary accessory buildings and structures, but does not include commercial recreation uses. (RC-Jun 25/14;E-Oct 18/14)**

- 2.55 RECYCLING DEPOT means a building which is used for the deposit, collection and handling of waste paper, rags, tires, bottles or other materials (excluding construction and demolition materials or hazardous materials) which are to be delivered wholesale to other operations for reclamation, processing or salvage, but shall not include any such salvage or processing on the same lot or within any building used as a re-cycling depot. (RC - Sep 10/02;E-Nov 9/02).**
- 2.56 RESIDENTIAL CARE FACILITY means a building or place or part of a building in which accommodation and supervisory and/or personal care is provided, or is made available for more than three persons.
- 2.57 RESTAURANT - FULL SERVICE means a building or part of a building wherein food is prepared and offered for sale to the public primarily for consumption within the building and may include a take-out area which does not exceed 10% of the gross floor area of the full service restaurant. A full service restaurant is characterized by the provision of table service, including buffet service and may also be licensed to serve alcoholic beverages.
- 2.58 RESTAURANT - DRIVE-IN means a building or part of a building wherein food is prepared and offered for sale to the public for consumption within or outside the building. A drive-in restaurant is characterized by the provision of take-out services at a counter or from a drive through car pick up window. It does not provide the service of delivering to or waiting on tables nor is it licensed to sell alcoholic beverages.
- 2.59 RESTAURANT - TAKE-OUT means a building or part of a building wherein food is prepared and offered for sale to the public primarily for off-premises consumption and may include a seating area which does not exceed 25% of the gross floor area of the take-out restaurant. A take-out restaurant does not provide the service of delivery to or waiting on tables nor is it licensed to sell alcoholic beverages. Take-out restaurants, however, may provide a home delivery service.
- 2.60 RETAIL STORE means a building or part of a building in which goods, wares, merchandise, substances, articles or things are offered for sale directly to the public at retail value.
- 2.61 ROAD ENTRANCE RESERVE means the frontage which provides access to a public street or highway or private road from an area of land consisting of a minimum of five (5) acres, and which entrance has been approved by the Department of Transportation for the purposes of a public road or private road entrance reserve.
- 2.62 SALVAGE YARD means a lot or premises for the storage, handling or processing of and sale of scrap material, and without limiting the generality of the foregoing, shall include waste paper, rags, bones, used bicycles, vehicles, tires, metal or other scrap material or salvage but excluding construction and demolition materials and hazardous waste material storage or disposal sites. (RC-Sep 10/02;E-Nov 9/02).**



- 2.63 SENIOR CITIZEN HOUSING means apartment housing designed for occupation by senior citizens and operated and maintained by a Public Housing Authority or fraternal organization.
- 2.64 SERVICE INDUSTRY means a building or part of a building in which the primary function is to provide services such as maintenance or limited processing, and which may include, as a minor or accessory function, the provision of supplies, merchandise or wares directly related to the services provided and, without limiting the generality of the foregoing, may include a public garage which includes an engine and body repair shop, a printing establishment, a laundry or cleaning establishment, a wholesale bakery, a paint shop, plumbing shop, sheet metal shop, a truck depot, any use which involves the manufacturing, processing and wholesaling of food items, and similar uses.
- 2.65 SERVICE SHOP means a building or part of a building used for the sale and repair of household articles and shall include radio, television and appliance repair shops but shall not include industrial or manufacturing or motor vehicle repair shops.
- 2.66 SERVICE STATION means a building or part of a building or a clearly defined space on a lot used for the retail sale of lubricating oils and gasolines and may include the sale of automotive accessories and the servicing and general repairing of motorized vehicles and may include washing establishments.
- 2.66A SHIPPING CONTAINER means a container originally designed for use as a means of storing and transporting cargo via ship, rail, air or truck. (WRCC-Jun 24;02).**
- 2.67 **SIGN means any structure, device, light, painting or other representation or natural object which is used to identify, advertise or attract attention to any object, place, activity, person, institution, organization, firm, group, commodity, profession, enterprise, industry or business, or which displays or include any letter, work, model, flag, pennant, insignia, device or representation used as an announcement, direction or advertisement, and which is intended to be seen from off the premises or from a parking lot, except any "sign" regulated under HRM By-law S-800 and signs which are affixed to the inside of a window or glass door.**
- (a) **Ground Sign means a sign supported by one or more uprights, poles or braces, placed in or upon the ground.**
- (b) **Projecting Sign means a sign which projects from and is supported by, or which extends beyond a wall or the roof of a building.” (RC-Sep 26/06;E-Nov 18/06)**
- 2.68 STREET OR ROAD means the whole and entire right-of-way of every highway, road, or road allowance vested in the Province of Nova Scotia or Halifax County Municipality.
- 2.69 STREET LINE means the boundary line of a street or a private road.
- 2.70 STRUCTURE means anything that is erected, built or constructed of parts joined together or any such erection fixed to or supported by the soil or by any other structure, and includes buildings, walls signs, and fences exceeding six (6) feet (1.8 m.) in height.

- 2.70A USED BUILDING MATERIAL RETAIL OUTLET** means land and/or buildings or part of a building where C&D Materials are sorted and available for resale with incidental and minimal alteration of the materials and where activity primarily occurs inside a building. (RC-Sep 10/02;E-Nov 9/02).
- 2.70B WATER CONTROL STRUCTURE** - means any device or infrastructure designed by a qualified professional to control or manage the flow, volume, direction, or quality of stormwater to mitigate downstream impacts. It may include, and is not limited to, stormwater ponds, rain gardens, engineered wetlands, quality control devices, flow splitters, dispersion beds, energy dissipation, baffles, pipes, inlet/outlet structures, weirs and/or check dams. (RC-Jun 25/14;E-Oct 18/14)
- 2.71 WATERCOURSE** means a lake, river, stream, ocean or other natural body of water. (RC-Jun 25/14;E-Oct 18/14)
- 2.72 YARD** means an open, uncovered space on a lot appurtenant to a building, except a court bounded on two or more sides by buildings. In determining yard measurements, the minimum horizontal distance from the respective lot lines shall be used.
- (a) Front Yard means a yard extending across the full width of a lot and between the front lot line and the nearest wall of any main building or structure on the lot; and "required front yard" or "minimum front yard" means the minimum depth required by this By-law of a front yard on a lot between the front lot line and the nearest main wall of any building or structure on the lot.
  - (b) Rear Yard means a yard extending across the full width of a lot and between the rear lot line and the nearest wall of any main building or structure on the lot; and required rear yard or minimum rear yard means the minimum depth required by this By-law of a rear yard on a lot between a rear lot line and the nearest main wall of any building or structure on the lot.
  - (c) Side Yard means a yard extending between the front yard and the rear yard and between a side lot line and the nearest main wall of any building on the lot; and required sideyard or minimum side yard means the minimum breadth required by this By-law of a side yard on a lot between a side yard line and the nearest main wall of any building or structure on the lot.
  - (d) Flankage Yard means the side yard of a corner lot, which side yard abuts a street, and required flankage yard or minimum flankage yard means the minimum side yard required by this By-law where such yard abuts a street or private road.

## PART 3: ZONES AND ZONING MAPS

### 3.1 ZONES

For the purpose of this By-law, the Planning District 5 Plan Area is divided into the following zones by zoning maps, the boundaries of which are shown on the attached zoning schedules. Such zones may be referred to by the appropriate symbols:

<u>Symbol</u>	<u>Zone</u>	
<u>Residential Zones</u>	R-1	Single Unit Dwelling Zone
	R-2	Two Unit Dwelling Zone
	R-2a	Residential Home Occupation Zone
	<b>R-2b</b>	<b>Residential Equine Zone (RC-Mar 2/10;E-Apr 17/10)</b>
	R-6	Rural Residential Zone
	R-6a	Rural Mixed Residential Zone
<u>Village Centre Zones</u>	HCR	Herring Cove Residential Zone
	V-1	Harrietsfield Village Centre Zone
	V-3	Ketch Harbour Village Centre Zone
	V-4	Sambro General Building Zone
<u>Commercial, Resource and Industrial Zones</u>	C-1	Local Business Zone
	C-2	General Business Zone
	C-5	Industrial - Commercial Mix Zone
	F-1	Fishing <b>Village Zone (RC-Jun 25/14;E-Oct 18/14)</b>
<u>Construction &amp; Demolition (C&amp;D) Zones</u>	CD-1	<b>(C&amp;D Materials Transfer Stations) Zone</b>
	CD-2	<b>(C&amp;D Materials Processing Facilities) Zone</b>
	CD-3	<b>(C&amp;D Materials Disposal Sites) Zone</b>
<u>Infrastructure Charge Zone</u>	ICH	<b>Infrastructure Charge Holding Zone</b>
<u>Community Use, Open Space and Special Zones</u>	P-2	Community Facility Zone
	P-3	Park Zone
	<b>RPK</b>	<b>Regional Park Zone (RC-Jun 25/14;E-Oct 18/14)</b>
	P-4	Conservation Zone
	<b>PA</b>	<b>Protected Area Zone (RC-Jun 25/14;E-Oct 18/14)</b>
	P-5	Special Facility Zone

### 3.2 ZONING MAPS

- (a) Schedule “A” - Chebucto Peninsula Zoning Map, attached hereto, may be cited as the "Planning District 5 Zoning Map" and is hereby declared to form part of this By-law.
- (b) The extent and boundaries of all zones are shown on Schedule “A”, and for all such zones the provisions of this By-law shall apply to all such zones.
- (c) The symbols used on Schedules “A”, refer to the appropriate zones established by Section 3.1 above.

### 3.3 INTERPRETATION OF ZONING BOUNDARIES

Boundaries between zones shall be determined as follows:

- (a) where a zone boundary is indicated as following a street or highway, the boundary shall be the centre line of such street or highway;
- (b) where a zone boundary is indicated as approximately following lot lines, the boundary shall follow such lot lines;
- (c) where a street, highway, railroad or railway right-of-way, electrical transmission line right-of-way or watercourse is included on the zoning maps, it shall, unless otherwise indicated, be included in the zone of the adjoining property on either side thereof; and
- (d) where a railroad or railway right-of-way, electrical transmission line right-of-way or watercourse is included on the zoning maps and serves as a boundary between two or more different zones, a line midway on such right-of-way or watercourse and extending in the general direction of the long division thereof shall be considered the boundary between zones unless specifically indicated otherwise; or
- (e) where none of the above provisions apply, and where appropriate, the zone boundary shall be scaled from the attached Schedules.

### 3.4 ZONES NOT ON MAPS

The zoning maps of this By-law may be amended to utilize any zone in this By-law, regardless of whether or not such zone has previously appeared on any zoning map. Such amendments must be carried out in accordance with the Planning Act and must be in conformity with the policies of the Municipal Planning Strategy for Planning District 5.

### 3.5 USES PERMITTED

Uses permitted within any zone shall be determined as follows:

- (a) If a use is not listed as a use permitted within any zone, it shall be deemed to be prohibited in that zone.
- (b) Notwithstanding 3.5 (a) above, within the V-4 (Sambro General Building) Zone, unless a use is specifically prohibited, it shall be deemed to be a permitted use in

that zone.

- (c) If any use is listed subject to any special conditions or requirements, it shall be permitted subject to the fulfilling of such conditions or requirements.
- (d) Where a use permitted within any zone is defined in Section 2, the uses permitted within that zone shall be deemed to include any similar use which satisfied such definition except where any definition is specifically limited to exclude any use.
- (e) Except where limited by Section 4.1, or specifically prohibited elsewhere in this By-law, any use permitted within any zone may be located in conjunction with, whether contained within the same building or located on the same lot, as any other use permitted within that zone.

### 3.6 OTHER USES CONSIDERED BY DEVELOPMENT AGREEMENT

Notwithstanding Section 3.5, above, certain uses which may not be shown as permitted uses in any zone may be considered in accordance with the development agreement provisions the Municipal Planning Strategy for Planning District 5, (Chebucto Peninsula) such uses are:

- (a) the expansion of the Birchlee Mobile Home Park;
- (b) the establishment or expansion of golf courses, racquet sports and fitness clubs in the Residential Designation;
- (c) new commercial uses and the expansion of existing commercial uses permitted in the V-1 Zone in excess of 2,000 square feet in the Harrietsfield Village Centre Designation;
- (d) the establishment or expansion of industrial or commercial parks and expansion of the Fancy Industrial Park in the Industrial-Commercial Designation;
- (e) the establishment or expansion of commercial uses in federal or provincial parks in the Park Designation;
- (f) the establishment or expansion of commercial recreation uses in the Rural A and Rural B Designation;
- (g) the establishment or expansion of restaurants in the Herring Cove Village Centre Designation and the Ketch Harbour Village Centre Designation;
- (h) **Deleted (RC-Jun 27/06;E-Aug 26/06)**
- (i) local commercial centres in excess of 2,000 square feet.
- (j) the establishment or expansion of any commercial or industrial use permitted in the C-5 Zone, located within 250 feet of the Long Lake Provincial Park, or of the Old Sambro Road north of Fish Brook;
- (k) **the subdivision and development of lots on new public streets within the *HCR (RC-Jun 25/14;E-Oct 18/14)* (Herring Cove Residential) Zone and the F-1 (Fishing Village) Zone. (RC-Feb 13/01;E-May 5/01)**

**As provided for in the Regional Municipal Planning Strategy for Halifax Regional Municipality, the following uses may be considered by development agreement on lands designated Rural Commuter: (RC-Jun 25/14;E-Oct 18/14)**

- (i) **Conservation Design Developments in accordance with policies S-14, S-15, S-16 and S-17 of the Regional Municipal Planning Strategy, as applicable; and (RC-Jun 25/14;E-Oct 18/14)**
- (ii) **residential development on islands, as per policy S-18 of the Regional**

**Municipal Planning Strategy. (RC-Jun 25/14;E-Oct 18/14)**

**As provided for in the Regional Municipal Planning Strategy for Halifax Regional Municipality, the following uses may be considered by development agreement on lands designated Harbour outside of the Urban Service Area: (RC-Jun 25/14;E-Oct 18/14)**

- (i) Conservation Design Developments in accordance with policies S-14, S-15, S-16 and S-17 of the Regional Municipal Planning Strategy, as applicable. (RC-Jun 25/14;E-Oct 18/14)**

## PART 4: GENERAL PROVISIONS FOR ALL ZONES

### 4.1 DEVELOPMENT PERMITS

- (a) No development shall be permitted unless a development permit has been issued and no development permit shall be issued unless the provisions of this By-law are satisfied.
- (b) Any development permit shall be in force for a period of one (1) year from the date of issue and any permit may be re-issued upon request and subject to review by the Development Officer.
- (c) Where any development permit is issued, such permit may include permission of any single development, or of more than one development, or of any or all elements related to any development, including signs permitted according to Section 5 provided that such are specified by the permit and provided also that no development permit shall pertain to more than one (1) lot.

#### **4.1A Deleted (RC-Jun 27/06;E-Aug 26/06)**

#### **4.1B Where a property is subject to a rezoning approved between December 1, 2005 and April 29, 2006, the Development Officer may reduce the requirements adopted to implement the Regional Municipal Planning Strategy, to the greatest extent possible to allow the proposed development that was the subject of the rezoning. (RC-Jun 25/14;E-Oct 18/14)**

### 4.2 LICENCES PERMITS AND COMPLIANCE WITH OTHER BY-LAWS

- (a) Nothing in this By-law shall exempt any person from complying with the requirements of the Building By-law or any other by-law in force within the Municipality, or to obtain any licence, permission, permit, authority or approval required by any other by-law of the Municipality or statute and regulation of the Province of Nova Scotia.
- (b) Where the provisions in this By-law conflict with those of any other municipal or provincial regulations, by-laws or codes, the higher or more stringent requirements shall prevail.

### 4.3 ONE DWELLING ON A LOT

No person shall erect more than one (1) dwelling on a lot.

### 4.4 SEPARATION BETWEEN MAIN BUILDINGS

The minimum separation distance between any main buildings located on the same lot shall be sixteen (16) feet (4.8 m).



#### 4.5 EXISTING UNDERSIZED LOTS

Notwithstanding anything else in this By-law, a vacant lot held in separate ownership from adjoining parcels on the effective date of this By-law and having less than the minimum frontage, depth or area required by this By-law, may be used for any purpose permitted in the zone in which the lot is located, and a building may be erected on the lot providing that all other applicable provisions in this By-law are satisfied. Furthermore, where the Development Officer approves an increase in the area of any undersized lot held in separate ownership from adjoining parcels on the effective date of this By-law, it may be used for any purpose permitted in the zone in which the lot is located and a building may be erected on the lot, notwithstanding that it may still have less than the minimum frontage depth or area required by this By-law, and provided that all other applicable provisions of this By-law are satisfied.

#### 4.6 SUBDIVISION OF EXISTING LOTS

Any lot created pursuant to Section 98 of the Planning Act may be used for any purpose permitted in the zone in which the lot is located and a development permit may be issued and a building may be erected on the lot, provided that all other applicable provisions of this By-law are satisfied.

#### 4.7 REDUCED FRONTAGE

- (a) Notwithstanding the lot frontage requirements found elsewhere in this By-law, lots may be created pursuant to the provisions of **Sections 40, 41, 42 and 45 (RC-Jun 25/14;E-Oct 18/14)** of the Subdivision By-law and a development permit may be issued provided that all other applicable provisions of this By-law are satisfied.
- (b) Notwithstanding the lot frontage provisions contained in this By-law, a portion of a lot identified as a road entrance reserve shall meet the requirements of the Department of Transportation **or the Municipal Service System Guidelines, as applicable (RC-Jun 25/14;E-Oct 18/14)**.
- (c) **Deleted (RC-Jun 25/14;E-Oct 18/14)**
- (d) **Notwithstanding the lot frontage requirements found elsewhere in this By-law, residential uses that are located on lots that do not meet lot frontage requirements and received development permits on or before April 1, 2016 are permitted provided all other applicable provisions of this By-law are satisfied. (RC-Jan 10/17;E-Feb 25/17)**
- (e) **Notwithstanding the lot frontage requirements found elsewhere in this By-law, residential uses, excluding daycares facilities, are permitted on lots that do not meet lot frontage requirements provided the following conditions are satisfied: (RC-Jan 10/17;E-Feb 25/17)**
  - i. **the lot existed on April 1, 2016 and is located within the area shown in Schedule E; (RC-Jan 10/17;E-Feb 25/17)**
  - ii. **at the time of permitting, the applicant shall provide evidence satisfactory to the Development Officer establishing a registered easement in favour of the property that allows vehicular access to a street or road; (RC-Jan 10/17;E-Feb 25/17)**
  - iii. **where the vehicular access required by subclause ii is a shared private driveway serving four or more dwellings, it has been constructed, as**



- certified by a professional engineer, to the design standards contained in Schedule F; and (RC-Jan 10/17;E-Feb 25/17)
- iv. all other requirements of this By-law are met. (RC-Jan 10/17;E-Feb 25/17)

#### **4.7A SUBDIVISION OF SEMI-DETACHED DWELLINGS**

- (a) Provided that all other applicable provisions in this By-law are satisfied, where a lot containing a semi-detached dwelling is subdivided so that each dwelling unit is on its own lot, there shall be no setback required from the common lot boundary.
- (b) Where a semi-detached dwelling exists on one lot, or is to be constructed on a lot pursuant to Section 4.5 of this By-law, and such lot does not meet the lot area or frontage requirements for subdivision under this By-law, a subdivision may be approved to place each dwelling unit on its own lot, provided that each lot has a minimum frontage of 20 feet. (WRCC-Apr 28/08;E-May 19/08)

#### **4.8 EXISTING BUILDINGS**

Where a building has been erected on or before the effective date of this By-law, on a lot having less than the minimum frontage, area, or depth, or having less than the minimum setback or side yard or rear yard required by this By-law, the building may be enlarged, reconstructed, repaired, replaced, rebuilt, or renovated provided that:

- (a) the enlargement, reconstruction, repair or renovation does not further reduce the front yard or side yard that does not conform to this By-law; and
- (b) all other applicable provisions of this By-law are satisfied.

#### **4.9 LIVESTOCK**

Livestock may be kept on a property only where agriculture is a permitted use.

#### **4.10 EXISTING USES**

Unless otherwise identified in Appendix "B" of this By-law, uses which are permitted as existing uses within a zone, or which are identified in Appendix "C", shall be considered as fully conforming uses and as such are permitted to expand, resume operation if discontinued, or be replaced, or rebuilt if destroyed on the lot which they occupied on the effective date of this By-law, subject to the requirements of the zone in which they are situated or subject to the provisions of Appendix "C".

#### **4.11 NON-CONFORMING USES**

Non-conforming uses shall be subject to Sections 90 to 93 of the Planning Act of Nova Scotia, which is included in this By-law as Appendix A". Additions or structural alterations to non-conforming uses shall be permitted if they do not result in any increase in the volume of space devoted to the non-conforming use itself.

#### 4.12 ACCESSORY USES AND BUILDINGS

Provisions made under this by-law to permit uses, buildings, and structures shall, unless otherwise stated by this by-law, also be deemed to include any accessory uses buildings or structures provided that:

- (a) the accessory use, building, or structure is located within the same zone as the principal building or use it is intended to serve or is located within an abutting zone in which the principal use or building is permitted;
- (b) the accessory use building or structure is located on a lot which directly abuts or is directly across a public street or highway, private road or private right-of-way from the lot containing the principal building or use it is intended to serve; and
- (c) all other applicable conditions and requirements of this by-law are satisfied. (WRCC-Jun 26/95;E-Jul 22/95)

#### 4.13 ACCESSORY BUILDINGS

- (a) Accessory uses, buildings and structures shall be permitted in any zone but shall not:
  - (i) be used for human habitation except where a dwelling is a permitted accessory use;
  - (ii) be built closer to the front lot line than the minimum distance required for the main building, or be built closer than four (4) feet (1.2 m) to any other lot line except that:
    - 1. common semi-detached garages may be centred on the mutual side lot line;
    - 2. boat houses, boat docks, and fishery support uses may be built to the lot line when the line corresponds to the high water mark; and
    - 3. **accessory buildings exceeding one thousand (1000) square feet of floor area may be built within eight (8) feet (2.4 m) or one half the height of the accessory building whichever is greater in any Residential (R-1 (Single Unit Dwelling), R-2 (Two Unit Dwelling Zone), R-2a (Residential Home Occupation Zone) Zone. (WRCC-Sep 27/04;E-Oct 17/04).**
  - (iii) be built closer than 4 feet (1.2 m) of any other accessory building;
  - (iv) exceed twenty (20) feet (4.6 m) in height in any Residential (R-1, R-2, R-2a) Zone;
  - (v) **exceed one thousand (1000) square feet (70 m<sup>2</sup>) at grade on lots less than 40,000 square feet in any R-1 (Single Unit Dwelling), R-2 (Two Unit Dwelling Zone), R-2a (Residential Home Occupation Zone) Zone. (WRCC-Sep 27/04;E-Oct 17/04).**
  - (vi) be built within eight (8) feet (2.4 m.) of a dwelling unit or twelve (12) feet (3.7 m.) of any other main building.
  - (vii) be used for the keeping of livestock only where agriculture is a permitted use on the property.
  - (viii) **notwithstanding Subsection 4.13 (a) (v) and the undersized lot provisions of Section 4.5, exceed a total floor area equivalent to 10% of the lot area on lots greater than 40,000 square feet. (WRCC-Sep**

**27/04;E-Oct 17/04).**

- (b) Notwithstanding anything else in this By-law, drop awnings, clothes poles, flag poles, garden trellises, fences and retaining walls shall be exempted from the requirements of Subsection (a).

#### **4.13A SHIPPING CONTAINERS**

- (a) Shipping containers may not be used as accessory buildings to a residential use. Shipping containers may be used as accessory buildings only in an industrial or commercial zone, or in conjunction with a recreation use, pursuant to applicable requirements for accessory buildings and pursuant to applicable zone standards including those relating to setbacks, screening and landscaping. Notwithstanding the foregoing, shipping containers intended for non-recreation use shall not be permitted on any property which abuts a residential, park or institutional zone.
- (b) Shipping containers may not be placed in the front or flanking yard of any lot, or between the main building and any street.
- (c) No shipping container may be used in any zone as a dwelling or other form of accommodation, including offices. (WRCC-Jun 24/02).

#### **4.14 AUXILIARY DWELLING UNITS**

One auxiliary dwelling unit shall be permitted in all zones where two unit dwellings are permitted, but the total number of dwelling units, including an auxiliary dwelling unit, shall not exceed two. For purposes of lot size requirements, an auxiliary unit shall not be required to have an additional lot area of 6,000 square feet and an additional frontage of 60 feet.

#### **4.15 TEMPORARY CONSTRUCTION USES PERMITTED (RC-Jan 20/09;E-Feb 7/09)**

- (a) Nothing in this By-law shall prevent the use of land or the use or erection of a temporary building or structure which is necessary and accessory to construction in progress, such as a work camp or construction camp, mobile home, sales or rental office, tool or maintenance shed or scaffold, including a shipping container which serves as one of the foregoing, except as a mobile home, sales or rental offices, provided that a development permit has been issued.
- (b) A rock crusher may be used at the site of a demolition of a structure or building, the site of construction of primary or secondary services pursuant to the Regional Subdivision By-law, or at the site of development permitted pursuant to this By-law, provided a development permit has been issued for such use.
- (c) A development permit may only be issued for the temporary use of a rock crusher.
- (d) A development permit issued for the use of a temporary rock crusher accessory to demolition of a structure or building pursuant to this By-law or a development pursuant to this By-law shall be valid for any period specified

not exceeding sixty (60) days. A development permit issued under this clause may be renewed for a period not to exceed thirty (30) days at a time, if a development officer determines that an extension of the period is necessary. No rock crusher shall be located or used within three (3) metres of any property boundary.

- (e) A development permit issued for the use of a temporary rock crusher accessory to the construction of primary or secondary services pursuant to the Regional Subdivision By-law shall be valid for any period which does not exceed the construction time schedule specified in the subdivision agreement. No rock crusher for which a permit has been issued under this clause shall be located or used within sixty (60) metres of any building used for residential or institutional purposes; with the exception of fire stations, police stations, public works facilities, cemeteries, historic sites and monuments, and recreational trails where no rock crusher shall be located or used within three (3) metres of any property boundary.
- (f) Notwithstanding any other provision of this By-law, a temporary rock crusher accessory to construction in progress shall not be used to process material for export to another site nor to process material imported to the site.
- (g) A temporary rock crusher may be used as an accessory to demolition in progress to process demolished material for export to another site subject to disposal in accordance with the requirements of this By-law and the C&D Materials Recycling and Disposal License By-law.

#### 4.16 VEHICLE BODIES

No truck, bus, coach or streetcar body, nor a structure of any kind, other than a dwelling unit erected and used in accordance with this and all other By-laws of the Municipality, shall be used for human habitation, and no unlicensed vehicle body shall be used as a commercial building.

#### 4.17 RESTORATION TO A SAFE CONDITION

Nothing in this By-law shall prevent the strengthening or restoring to a safe condition of any building or structure, provided that in the case of a non-conforming use, the provisions of Sections 83 to 87 of the Planning Act shall prevail.

#### 4.18 BUILDING TO BE MOVED

No person shall move a building, residential or otherwise, within or into the area covered by this By-law without obtaining a development permit from the Development Officer.

#### 4.19 HEIGHT REGULATIONS

The height regulations of this By-law shall not apply to church spires, water tanks, elevator enclosures, silos, flagpoles, television or radio antennae, ventilators, skylights, barns, chimneys, clock towers, ~~windmills~~ (RC-Aug 16/11;E-Oct 29/11) or solar collectors.

**4.20      WATERCOURSE SETBACKS AND BUFFERS (RC-Jun 25/14;E-Oct 18/14)**

- (1)    (a)    No development permit shall be issued for any development within 20m of the ordinary highwater mark of any watercourse.
  - (b)    Where the average positive slopes within the 20m buffer are greater than 20%, the buffer shall be increased by 1 metre for each additional 2% of slope, to a maximum of 60m.
  - (c)    Within the required buffer pursuant to clauses (a) and (b), no excavation, infilling, tree, stump and other vegetation removal or any alteration of any kind shall be permitted in relation to a development.
  - (d)    Within the required buffer pursuant to clauses (a) and (b), activity shall be limited to the placement of one accessory structure or one attached deck not exceeding a footprint of 20 m<sup>2</sup> or a combination of an accessory structure and attached deck not exceeding 20 m<sup>2</sup> , fences, boardwalks, walkways and trails not exceeding 3 metres in width, wharfs, boat ramps, marine dependent uses, fisheries uses, conservation uses, parks on public lands, historic sites and monuments, and public road crossings, driveway crossings and wastewater, storm and water infrastructure, and water control structures.
  - (e)    Notwithstanding clause (a), the required buffer for construction and demolition operations shall be as specified under the applicable CD Zone.
  - (f)    Within the buffer required pursuant to clause (f), no excavation, infilling, tree, stump and other vegetation removal or any alteration of any kind shall be permitted in relation to a development.
- (2)    Notwithstanding the provisions of subsection (1), any existing building within the buffer distance may be permitted to be enlarged, renovated or repaired subject to the provisions of section 4.8 of this By-law. (WRCC-Oct 22/07;E-Oct 27/07)
- (3)    Notwithstanding subsection (1), where an existing residential main building is located within the required buffer, accessory structures, subject to meeting other requirements of this by-law, shall be permitted provided they are located no closer to the watercourse than the existing main building.
- (4)    Where the configuration of any existing lot, including lots approved as a result of completed tentative and final subdivisions applications on file prior to August 26, 2006 is such that no main building could be located on the lot, the buffer distance shall be reduced in a manner which would provide the greatest possible separation from a watercourse having regard to other yard requirements.
- (5)    Notwithstanding clause 1(a), the required minimum buffer shall be 30.48 metres within the Herring Cove Community. (WRCC-Oct 22/07;E-Oct 27/07)

- (6) Within the Herring Cove Community and notwithstanding subsection (1), (4), and (5), a reduction of the required buffer to 15.24 metres for lots in existence on May 5, 2001 may be permitted by the Development Officer if the full requirement is prohibitive due to resulting insufficient site area for development. (WRCC-Oct 22/07;E-Oct 27/07)
- (7) Notwithstanding subsection (1), nothing in this by-law shall prohibit the removal of windblown, diseased or dead trees, deemed to be hazardous or unsafe.
- (8) Notwithstanding subsection (1), the selective removal of vegetation to maintain the overall health of the buffer may be authorized by the Development Officer where a management plan is submitted by a qualified arborist, landscape architect, forester or forestry technician.
- (9) Every application for a development permit for a building or structure to be erected pursuant to this section, shall be accompanied by plans drawn to an appropriate scale showing the required buffers, existing vegetation limits and contours and other information including professional opinions, as the Development Officer may require, to determine that the proposed building or structure will meet the requirements of this section.

#### **4.20A COASTAL AREAS (RC-Jun 25/14;E-Oct 18/14)**

- (1) No development permit shall be issued for any dwelling on a lot abutting the coast of the Atlantic Ocean, including its inlets, bays and harbours, within a 3.8 metre elevation above Canadian Geodetic Vertical Datum (CGVD 28).
- (2) Subsection (1) does not apply to:
  - (a) any residential accessory structures, marine dependant uses, open space uses, parking lots and temporary uses permitted, permitted in accordance with the requirements of this by-law; and
  - (b) lands within the area designated on the Generalized Future Land Use Map in the Regional Municipal Planning Strategy as Harbour.
- (3) Notwithstanding subsection (1), any existing dwelling situated less than the required elevation may expand provided that such expansion does not further reduce the existing elevation.
- (4) Every application for a development permit for a building or structure to be erected pursuant to this section shall be accompanied by plans drawn to an appropriate scale showing the required elevations, contours and lot grading information to determine that the proposed building or structure will meet the requirements of this section.

#### **4.21 REDUCED FRONTAGE ON A CURVE**

Where the front lot line of any lot is a curved line, a minimum lot width which is equal to

the minimum lot frontage required by this By-law shall be required in lieu of such minimum lot frontage. For the purpose of this Section, such minimum lot width shall be measured along a horizontal line between the side lot lines, twenty (20) feet from the front lot line.

#### 4.22 DAYLIGHTING TRIANGLE

On a corner lot, a fence, sign, hedge, shrub, bush or tree or any other structure or vegetation shall not be erected or permitted to grow to a height more than two (2) feet (.6 m) above grade of the streets that abut the lot within the triangular area included within the street lines for a distance of twenty (20) feet (6.1 m) from their point of intersection.

#### 4.23 PERMITTED ENCROACHMENTS

Every part of any yard required by this By-law shall be open and unobstructed by any structure except to permit uses or encroachments subject to the following provisions:

- (a) Uncovered patios, walkways, uncovered staircases or steps may be located in any yard.
- (b) There may be erected or maintained in any yard, the usual projections of sill, cornices, eaves, gutters, chimneys, pilasters, canopies or other architectural features, provided that no such structure or feature shall project more than two (2) feet (.6 m) into any required yard.
- (c) Window bays and solar collectors may be permitted to project not more than three (3) feet (.9 m) from the main wall into a required front, rear or flankage yard.
- (d) Exterior staircases, balconies, porches, verandas and sun decks shall not be permitted to project into any required yard.
- (e) Ornamental planting and landscaping may be located in any yard unless otherwise indicated in this By-law.
- (f) Access ramps for the mobility disabled may be located in any yard.

#### 4.24 YARD EXCEPTION

Where, in this By-law a front, side or rear yard is required, and part of the area of the lot is usually covered by water or marsh or is beyond the rim of a river bank or watercourse, then the required yard shall be measured from the nearest main wall of the main building or structure on the lot to the edge of the said area covered by water or marsh, if such area is closer than the lot lines.

#### 4.25 ILLUMINATION

No person shall erect any illuminated sign or illuminate an area outside any building unless such illumination is directed away from adjoining properties and any adjacent streets.

#### 4.26 COMMERCIAL MOTOR VEHICLES

Not more than one commercial vehicle shall be kept on any lot in any Residential (R-1, R-2, R-2a) Zone, nor be kept less than ten (10) feet (3 m) from any front lot line.



#### 4.27 PARKING REQUIREMENTS

- (a) For every building or structure to be erected or enlarged, or any change of use, off-street parking located within the same zone as the use and having unobstructed access to a public street shall be provided and maintained in conformity with the following schedule, except where any parking requirement is specifically included elsewhere in this By-law. Where the total required spaces for any use is not a whole number, the total spaces required by this section or by other specific sections shall be the next largest whole number.

<u>USE</u>	<u>PARKING REQUIREMENT</u>
Any dwelling except as specified below	1 space per dwelling unit
Multiple unit dwellings (except for senior citizen apartments)	1.5 spaces per dwelling unit
Senior citizen multiple use dwelling	1 space per dwelling unit
Bed and breakfasts	1 space per bedroom devoted to the bed and breakfast operation
Retail stores, service and personal service shops:	
(a) exceeding 5,000 square feet (464 m <sup>2</sup> ) of gross floor area	5.5 spaces per 1,000 square feet (92.9 m <sup>2</sup> ) of gross floor area
(b) not exceeding 5,000 square feet (464.5 m <sup>2</sup> ) of gross floor area	3.3 spaces per 1,000 square feet (92.9 m <sup>2</sup> ) of gross floor area
Banks, financial institutions and general offices	3.3 spaces per 1,000 square feet (93 m <sup>2</sup> ) of gross floor area
Motels and hotels	1 space per sleeping unit plus requirements for restaurants or other facilities contained therein
Restaurants - Drive-In	27 spaces per 1000 square feet (93 m <sup>2</sup> ) of net floor area excluding food preparation, washroom and storage areas
Restaurants - Full Service	20 spaces per 1000 square feet (93 m <sup>2</sup> ) of net floor area excluding food preparation, washroom and storage areas
Restaurants - Take-Out:	



(a) exceeding 300 square feet (28 m <sup>2</sup> ) of net floor area excluding washrooms and storage areas	16 spaces per 1000 square feet (92.9 m <sup>2</sup> ) of net floor area excluding washrooms and storage areas
(b) not exceeding 300 square feet (28 m <sup>2</sup> ) of net floor area excluding washrooms and storage areas	5 spaces
Lounges, taverns and beverage rooms	the greater of 1 space per 3 seats or 1 space per 100 square feet (10 m <sup>2</sup> ) of gross floor area
Theatres	1 space per 5 seats

## USE

Institutional uses except as  
as specified below

## PARKING REQUIREMENT

where there are fixed seats, the

greater of 1 space per 4 seats and 1 space per 100 square feet (10 m<sup>2</sup>) of gross floor area where there are no fixed seats, the greater of 1 space per 100 square feet (10 m<sup>2</sup>) of gross floor area of 1 space per 4 persons which can be accommodated at any one time

Government offices	4.5 spaces per 1,000 square feet (93 m <sup>2</sup> ) of gross floor area
Schools	3 spaces per classroom plus 1 space per 20 high school students
Hospitals	2 spaces per bed
Homes for the aged and nursing homes	2 spaces per 5 beds
Day care facilities	1.5 spaces per 400 square feet (38 m <sup>2</sup> ) of gross floor area
<b>Medical clinics and offices of any health practitioner</b>	<b>2 spaces per consulting room (RC-Aug 5/08;E-Aug 23/08)</b>
Funeral homes	15 spaces
Warehouses, transport terminals and general industrial uses	the greater of 2 spaces per 1,000 square feet (93 m <sup>2</sup> ) of gross floor area

or 1 space per 4 employees

Any use not specified above

3.3 spaces per 1,000 square feet  
(93 m<sup>2</sup>) of gross floor area

(b) Reserved Spaces for the Mobility Disabled

Notwithstanding Section 4.27 (a), reserved parking spaces for the mobility disabled shall be provided as an addition to the required spaces in conformity with the following schedule:

USE

PARKING REQUIREMENT

Medical Clinics and offices of any health practitioner

1 reserved parking space for the mobility disabled per 5-15 parking spaces required; 1 additional space for each additional 15 required spaces or part thereof to a maximum of 10

Homes for the Aged/Nursing Homes

1 reserved parking space per 20 beds to a maximum of 10

Multiple Dwellings

1 reserved parking space per 30 units to a maximum of 10

Restaurants and Theatres

1 reserved parking space per 50 seats to a maximum of 10

All other uses excluding fire stations, boarding houses and any industrial use which does not have a retail function

1 reserved parking space for the mobility disabled per 15-100 parking spaces required;

1 additional space for each additional 100 required spaces or part thereof, to a maximum of 10

(c) Standards for Mobility Disabled

- (i) each reserved parking space shall contain an area of not less than two hundred and forty (240) square feet (22.3 m<sup>2</sup>) measuring twelve (12) feet by twenty (20) feet;
- (ii) where the limits of the parking lot are defined by a curb, the parking lot shall be provided with a ramped curb as close as possible to the location which it is intended to serve and in no case shall it be further than three hundred (300) feet (91.4 m) from the location which it is intended to serve;
- (iii) each reserved parking space shall be located as close as possible to the location it is intended to serve; and
- (iv) each reserved parking space shall be clearly identified by a ground sign.

#### **4.27A RESIDENTIAL DRIVEWAY ACCESS - HERRING COVE COMMUNITY**

**New driveway accesses to Herring Cove Road between Florence Street and Esso Road shall be approved only where:**

- i) access to local streets cannot be granted, and**
- ii) it is not possible to utilize existing driveways or for more than one lot to share a driveway. (RC-Feb 13/01;E-May 5/01)**

#### **4.28 STANDARDS FOR PARKING LOTS**

Where a parking lot for more than four (4) vehicles is required or permitted;

- (a) the lot shall be maintained with a stable surface that is treated to prevent the raising of dust or loose particles;
- (b) the lights used for illumination of the lot shall be so arranged as to divert the light away from streets, adjacent lots and buildings;
- (c) a structure, not more than fifteen (15) feet (4.6 m) in height and not more than fifty (50) square feet (5 m<sup>2</sup>) in area may be erected in the lot for the use of attendants;
- (d) the lot shall be within three hundred (300) feet (91.4) of the location which it is intended to serve and shall be situated in the same zone;
- (e) no petroleum product pumps or other service station equipment shall be located or maintained on the lot;
- (f) approaches or driveway to the lot shall be defined by a curb or concrete or rolled asphalt and the limits of the lot shall be defined by a fence, curb or other suitable obstruction designed to provide a neat appearance; in addition, the location of approaches or driveways shall be not closer than fifty (50) feet (15.2 m) from the limits of the right-of-way at a street intersection;
- (g) entrance and exit ramps to the lot shall not exceed two (2) in number and each such ramp shall be a width of twenty-five (25) feet (7.6 m) at the street line and edge of pavement; and
- (h) The width of a driveway leading to a parking lot or loading space, or of a driveway or aisle in a parking lot, shall be a minimum width of ten (10) feet (3 m) if for one-way traffic and a minimum width of twenty (20) feet (6.1 m) if for two-way traffic, and the maximum width of a driveway shall be twenty-five (25) feet (7.6 m).

#### **4.28A BICYCLE PARKING FACILITIES (RC-Jun 25/14;E-Oct 18/14)**

- (1) Within the area designated on the Generalized Future Land Use Map in the Regional Municipal Planning Strategy as Urban Settlement, the whole of every building or structure to be erected or for the portion of a building or structure which is to be enlarged, on-site bicycle parking shall be provided in accordance with the following table:**

<b>Use</b>	<b>Bicycle Parking Requirement</b>
<b>Multiple Unit Dwelling</b>	<b>0.5 spaces per dwelling unit 80% Class A, 20% Class B</b>
<b>Hotels/ Motels/Inns</b>	<b>1 space for every 20 rooms 80% Class A, 20% Class B Minimum 2 Class B spaces</b>
<b>General Retail, Trade and Service, Food Store, Shopping Centre, Restaurants</b>	<b>1 space per 300m<sup>2</sup> GFA 20% Class A/ 80% Class B Minimum 2 Class B spaces</b>
<b>General Office, Banks, Medical Clinics, Institutional Uses, Government Buildings</b>	<b>1 space per 500m<sup>2</sup> GFA 50% Class A/ 50% Class B Minimum 2 Class B spaces</b>
<b>Auditoriums, Theatres, Stadiums, Halls</b>	<b>1 space for every 20 seats 20% Class A/ 80% Class B Minimum of 2 Class B spaces Maximum of 50 spaces</b>
<b>Schools, Colleges, Universities</b>	<b>1 space for every 250m<sup>2</sup> GFA 20% Class A/ 80% Class B</b>
<b>Recreation Facilities, Community Centres, Libraries.</b>	<b>1 space per 200m<sup>2</sup> GFA 20% Class A/ 80% Class B Minimum of 2 Class B spaces</b>
<b>General Industrial Uses</b>	<b>1 space per 1000 m<sup>2</sup> GFA 80% Class A/ 20% Class B Minimum of 2 Class B spaces Maximum of 20 spaces</b>
<b>Commercial Parking Structures/Lots (&gt;20 Motor Vehicle Spaces)</b>	<b>5% of motor vehicle parking provided Minimum of 2 Class B spaces Maximum of 50 spaces</b>
<b>Any Uses Not Specified Above</b>	<b>1 space per 500 m<sup>2</sup> GFA 50% Class A/ 50% Class B</b>

- (2) **Bicycle parking requirements shall not be required for the following land uses: single, two and three unit dwellings, townhouses, self storage facilities, car washes, cemeteries and funeral homes.**
- (3) **Each Class B bicycle parking space shall:**
  - (a) **be a minimum of 0.6m wide and 1.8m long;**
  - (b) **have a minimum overhead clearance of 2.0m;**
  - (c) **be located a minimum of 0.6m from any wall or other obstruction.**
- (4) **Access to and exit from Class B bicycle parking spaces shall be provided with**

an aisle of not less than 1.2m in width, to be provided and maintained beside or between each row of bicycle parking.

- (5) Class A bicycle parking spaces shall have a minimum door opening of 0.6m, be no less than 1.8m long and 1.2m in height, with an aisle width of not less than 1.5m. Bicycle rooms and cages for the storage of multiple bicycles shall contain Class B racks so that individual bicycles are supported.

#### **4.28B LOCATION OF BICYCLE PARKING (RC-Jun 25/14;E-Oct 18/14)**

- (1) Class B bicycle parking shall be located no more than 15m from an entrance. Where there are shelters such as building awnings or overhangs or special purpose-designed shelters that protect bicycles from the elements, bicycle parking may be located up to 30m from an entrance.
- (2) Class A bicycle parking may be located up to 200m from an entrance.
- (3) All bicycle parking spaces shall be located on hard surfaces in areas that are visible and well illuminated.
- (4) Class B spaces shall be located at ground level and visible to passers-by or building security personnel. Where not immediately visible to passers-by, directional signage shall be provided.

#### **4.28C SPECIAL BICYCLE PARKING FACILITY REQUIREMENTS (RC-Jun 25/14;E-Oct 18/14)**

- (1) Where six (6) bicycle spaces are provided, a reduction of one (1) regular required motor vehicle parking space may be permitted up to a maximum of two (2) spaces.
- (2) In any case where enhanced bicycle parking facilities are provided, for every two enhanced parking spaces, one regular required motor vehicle space may be eliminated up to a maximum reduction of 10% of the required motor vehicle parking.
- (3) In cases of 100% lot coverage, Class B bicycle parking may be installed within the street right-of-way, in accordance with the provisions of the Streets By-law (S-300), provided it is within 91.4m from the location they are to serve.

#### **4.29 COMPOSTING OPERATIONS**

No development permit shall be issued for a composting operation except in compliance with the following provisions:

- (a) the use shall not be obnoxious or create a nuisance;
- (b) a composting operation shall meet the following separation distances:
  - (i) from any property line 328 feet (100 m)

- (ii) from the nearest:
  - 1. residential dwelling 1,640 feet (500 m)
  - 2. community facility use 1,640 feet (500 m)
  - 3. commercial or industrial building 984 feet (300 m)
- (iii) from a watercourse 328 feet (100 m)
- (c) notwithstanding any other provisions of this by-law, composting operations may occur either inside or outside of a building; and
- (d) a composting operation shall not have direct access to either a local or subdivision road, as determined by the Municipality's Engineering and Works Department and any access road for such operations shall not occur through lands zoned for residential use (R-1, R-2, and R-2a Zones). (MC-Feb 26/96;E-Mar 28/96)

#### **4.30 TOURIST ACCOMMODATIONS**

One dwelling unit per lot may be used as an accommodation for the travelling public, on a daily, weekly, or monthly basis, for gain or profit, pending all other requirements of the Land Use By-law are met. (WRCC-Jun 7/04;E-Jun 27/04)

#### **4.31 SCHEDULE B - AREAS OF ELEVATED ARCHAEOLOGICAL POTENTIAL** (RC-Jun 25/14;E-Oct 18/14)

Where excavation is required for a development on any area identified on Schedule B attached to this by-law, a development permit may be issued and the application may be referred to the Nova Scotia Department of Communities, Culture and Heritage, Heritage Division for any action it deems necessary with respect to the preservation of archaeological resources in accordance with provincial requirements.

#### **4.32 SCHEDULE C - WETLANDS MAP** (RC-Jun 25/14;E-Oct 18/14)

Every application for a development permit shall be accompanied by plans, drawn to an appropriate scale, showing the location of all wetlands identified on Schedule C attached to this by-law, within and adjacent to the lot. Notwithstanding any other provision of this by-law, no development of any kind shall be permitted within any such wetland.

#### **4.33 WIND ENERGY FACILITIES** (RC-Jun 25/14;E-Oct 18/14)

The use of windmills or wind turbines to produce electricity or for any other purpose shall be regulated in accordance with the provisions of this Section.

### **I DEFINITIONS**

For the purposes of this Section, certain terms are defined as follows:

- a) "Habitable Building" means a dwelling unit, hospital, hotel, motel, nursing home or other building where a person lives or which contains overnight accommodations.

- b) **“Nacelle”** means the frame and housing at the top of the tower that encloses the gearbox and generator.
- c) **“Nameplate Capacity”** means the manufacturer’s maximum rated output of the electrical generator found in the nacelle of the wind turbine;
- d) **“Total Rated Capacity”** means the maximum rated output of all the electrical generators found in the nacelles of the wind turbines used to form a wind energy facility;
- e) **“Tower Height”** means the distance measured from grade at the established grade of the tower to the highest point of the turbine rotor or tip of the turbine blade when it reaches its highest elevation, or in the case of a roof mounted wind turbine the distance measured from the lowest point of established grade at the building’s foundation to the highest point of the turbine rotor or tip of the turbine blade when it reaches its highest elevation;
- f) **“Turbine”** means a wind energy conversion system, the purpose of which is to produce electricity, consisting of rotor blades, associated control or conversion electronics, and other accessory structures.
- g) **“Wind Energy Facility”** means a wind energy conversion system, the purpose of which is to produce electricity, consisting of one or more roof mounted turbines or turbine towers, with rotor blades, associated control or conversion electronics, and other accessory structures including substations, meteorological towers, electrical infrastructure and transmission lines;
  - i) **“Micro Facility”** means a wind energy facility consisting of a single turbine designed to supplement other electricity sources as an accessory use to existing buildings or facilities and has a total rated capacity of 10 kW or less, and is not more than 23 metres (75 feet) in height.
  - ii) **“Small Facility”** means a wind energy facility which has a total rated capacity of more than 10 kW but not greater than 30 kW. A Small Facility has a stand alone design, on its own foundation, or may be supported by guy wires, is not roof mounted, and the tower of which is not more than 35 metres (115 feet) in height.
  - iii) **“Medium Facility”** means a wind energy facility which has a total rated capacity of more than 30 kW but not greater than 300 kW. A Medium Facility has a stand alone design, on its own foundation, or may be supported by guy wires, is not roof mounted, and the towers of which are not more than 60 metres (197 feet) in height.
  - iv) **“Large Facility”** means a wind energy facility which has a total rated capacity of more than 300 kW. A Large Facility has a stand alone design, on its own foundation, or may be supported by guy wires, is not roof mounted, and the towers of which are greater than 60 metres (197 feet) in height.

## **II ZONES**

**For the purpose of this section the following zones apply as shown on the attached Schedule D - Wind Energy Zoning. Such zones are:**

- (UW-1) Urban Wind Zone**
- (RW-2) Rural Wind Zone**
- (R) Restricted Zone**



- a) **URBAN WIND ZONE (UW-1)**
  - i) All Wind Energy Facilities, except Large Facilities, are permitted in the Urban Wind Zone (UW-1).
  - ii) All turbine towers in the UW-1 Zone shall have a minimum distance between turbines equal to the height of the tallest tower.
  - iii) All turbine towers in the UW-1 Zone shall be set back a minimum distance of 1.0 times the tower height from any adjacent property boundary,
  - iv) Turbine towers of Micro Facilities in the UW-1 Zone shall be set back a minimum distance of 3.0 times the tower height from any habitable building on an adjacent property.
  - v) Turbine towers of Small Facilities in the UW-1 Zone shall be set back a minimum distance of 180 metres (590 feet) from any habitable building on an adjacent property.
  - vi) Turbine towers of Medium Facilities in the UW-1 Zone shall be set back a minimum distance of 250 metres (820 feet) from any habitable building on an adjacent property.
- b) **RURAL WIND ZONE (RW-2)**
  - i) All Wind Energy Facilities are permitted in the Rural Wind Zone (RW-2).
  - ii) All turbine towers shall have a minimum distance between turbines equal to the height of the tallest tower.
  - iii) Turbines towers of Micro Facilities in the RW-2 Zone shall have the following set back requirements:
    - 1) A minimum distance of 3.0 times the tower height from any habitable building on an adjacent property;
    - 2) A minimum distance of 1.0 times the tower height from any adjacent property boundary.
  - iv) Turbines towers of Small Facilities in the RW-2 Zone shall have the following set back requirements:
    - 1) A minimum distance of 180 metres (590 feet) from any habitable building on an adjacent property;
    - 2) A minimum distance of 1.0 times the tower height from any adjacent property boundary.
  - v) Turbines towers of Medium Facilities in the RW-2 Zone shall have the following set back requirements:
    - 1) A minimum distance of 250 metres (820 feet) from any habitable building on an adjacent property;
    - 2) A minimum distance of 1.0 times the tower height from any adjacent property boundary.
  - vi) Turbines towers of Large Facilities in the RW-2 zone shall have the following set back requirements:
    - 1) A minimum distance of 1000 metres (3281 feet) from any habitable building on an adjacent property;
    - 2) A minimum distance of 1.0 times the tower height from any adjacent property boundary.
- c) **RESTRICTED ZONE (R)**
  - i) Wind Energy Facilities shall not be permitted in the Restricted



## **Zone.**

### **III PERMIT APPLICATION REQUIREMENTS**

**All Wind Energy Facilities require a development permit. The permit application shall contain the following:**

- a) a description of the proposed Wind Energy Facility, including an overview of the project, the proposed total rated capacity of the Wind Energy Facility;**
- b) the proposed number, representative types, and height or range of heights of wind turbines towers to be constructed, including their generating capacity, dimensions, respective manufacturers, and a description of accessory facilities;**
- c) identification and location of the properties on which the proposed Wind Energy Facility will be located;**
- d) at the discretion of the Development Officer, a survey prepared by a Nova Scotia Land Surveyor, a surveyor's certificate, or a site plan showing the planned location of all wind turbines towers, property lines, setback lines, access roads, turnout locations, substation(s), electrical cabling from the Wind Energy Facility to the substation(s), ancillary equipment, building(s), transmission and distribution lines. The site plan must also include the location of all structures and land parcels, demonstrating compliance with the setbacks and separation distance where applicable;**
- e) at the discretion of the Development Officer, proof of notification to the Department of National Defense, NAV Canada, Natural Resources Canada and other applicable agencies regarding potential radio, telecommunications, radar and seismoacoustic interference, if applicable, to Transport Canada and the *Aviation Act*; and,**
- f) any other relevant information as may be requested by the Halifax Regional Municipality to ensure compliance with the requirements of this By-law.**

### **IV ADDITIONAL PERMIT REQUIREMENTS**

- a) The Development Permit application shall be reviewed by a Municipal Building Official to determine if design submissions are required from a Professional Engineer to ensure that the wind turbine base, foundation, or guy wired anchors required to maintain the structural stability of the wind turbine tower(s) are sufficient where a wind turbine is:**
  - i) not attached to a building and is not connected to the power grid;**
  - ii) attached to an accessory building in excess of 215 square feet and is not connected to the power grid.**
- b) A minimum of 60 days before the date a development permit application is submitted, an applicant shall send a notice to all assessed property owners of property that is within the following distances from the boundary of the property upon which any Micro, Small, Medium and Large wind energy facility is proposed:**
  - i) Micro            140 metres (460 ft)**
  - ii) Small           360 metres (1180 ft)**
  - iii) Medium        500 metres (1640 ft)**

- iv) **Large 2000 metres (6560 ft)**
- c) **The notice pursuant to section b) shall include the following information:**
  - i) **a site plan that includes property boundaries and the location of the proposed wind energy facility;**
  - ii) **a description of the type of wind energy facility; and**
  - iii) **the applicant's contact information which shall include a mailing address.**

## **V EXCEPTIONS**

**Notwithstanding Section II a) and II b) the setback requirements from any Wind Energy Facility to a property boundary may be waived where the adjoining property is part of and forms the same Wind Energy Facility. All other setback provisions shall apply.**

- a) **Wind Energy Facilities shall not be permitted in the following zones of the Planning District 5 Land Use By-law:**
  - i) **RPK (Regional Park) Zone;**
  - ii) **PA (Protected Area) Zone.**

## **VII INSTALLATION AND DESIGN**

- a) **The installation and design of a Wind Energy Facility shall conform to applicable industry standards.**
- b) **All structural, electrical and mechanical components of the Wind Energy Facility shall conform to relevant and applicable local, provincial and national codes.**
- c) **All electrical wires shall, to the maximum extent possible, be placed underground.**
- d) **The visual appearance of the Wind Energy Facility shall at a minimum:**
  - i) **be a non-obtrusive colour such as white, off-white or gray;**
  - ii) **not be artificially lit, except to the extent required by the *Federal Aviation Act* or other applicable authority that regulates air safety; and,**
  - iii) **not display advertising (including flags, streamers or decorative items), except for identification of the turbine manufacturer, facility owner and operator.**

## **VIII MISCELLANEOUS**

- a) **Micro Wind Facilities shall be permitted on buildings subject the requirements in Section II a) Urban Wind Requirements and Section II b) Rural Wind Requirements.**
- b) **The siting of Wind Energy Facilities is subject to the requirements for Watercourse Setbacks and Buffers as set out in the Land Use By-law.**
- c) **The siting of all accessory buildings are subject to the general set back provisions for buildings under this By-law**

## **IX SCHEDULES**

### **a) Schedule D – Wind Energy Zoning**

#### **4.34 PUBLIC TRANSIT FACILITIES (RC-Jun 25/14;E-Oct 18/14)**

**Public transit facilities shall be permitted in all zones with frontage on minor and major collector roads, arterial roads and expressways and shall not be required to conform to any zone requirements.**

## PART 5: SIGNS

### 5.1 GENERAL

- (a) Where this part is inconsistent with the regulations respecting advertising signs on or near public highways, made or administered by the Department of Transportation and Communications, the more restrictive regulations shall apply.
- (b) No person shall erect a sign according to the provisions of Section 5.4 except where a development permit has been issued, and no permit to erect a sign shall be issued unless all the sign provisions of this By-law are satisfied.

### 5.1A TEMPORARY SIGNAGE (RC-Sep 26/06;E-Nov 18/06)

- (a) **This By-law shall not apply to any sign regulated under HRM By-law S-800 (A By-law Respecting Requirements for the Licensing of Temporary Signs); and**
- (b) **Any sign provision within this By-law referring to temporary signage, as regulated under HRM By-law S-800, is superceded.**

### 5.2 SAFETY

Every sign and all parts thereof, including framework, supports, background, anchors and wiring systems shall be constructed in compliance with the Building By-law and any fire prevention and electrical codes.

### 5.3 SIGN AREA

The total area permitted of any sign shall be considered to be the area of the smallest rectangle, triangle or circle which can totally circumscribe the sign face or surface of any single, double or three-faced sign in the plane of its largest dimension. Each visible face of a multi-faced sign shall be calculated separately and then totalled in determining the sign area permitted.

### 5.4 SIGNS PERMITTED IN ALL ZONES

The following signs shall be permitted in all zones:

- (a) Any sign which identifies the name and address of a resident.
- (b) Any sign which regulates the use of property, as do "no trespassing" signs.
- (c) Any real estate sign.
- (d) Any sign which regulates or denotes the direction or function of various parts of a building or premises, including parking and traffic areas.
- (e) Any sign which is incidental to construction.
- (f) Any sign erected by, or under the direction of, a government body as are signs identifying public buildings, giving public information or regulating traffic or safety.
- (g) Any flag, insignia, notice or advertising of any charitable, religious or fraternal organization.
- (h) Any memorial sign, plaque or tablet.

- (i) Any sign which is incidental to fishery support uses.

## 5.5 SIGNS PROHIBITED IN ALL ZONES

The following signs shall not be permitted in any zone:

- (a) Any sign or sign structure which constitutes a hazard to public safety or health.
- (b) Any sign which, for any reason, obstructs the vision of drivers leaving a roadway or driveway, or detracts from the visibility or effectiveness of any traffic sign or control device on public streets.
- (c) Any sign which obstructs free ingress to or egress from a fire escape door, window or other required exit.
- (d) Any sign located at or near a sharp road curve or below the crest of a hill, except a sign erected by a government body.
- (e) Any sign which is not erected by, or under the direction of, a government body and which makes use of words such as "STOP", "LOOK", "DANGER", "ONE WAY" or "YIELD" or any similar words, phrases, symbols, lights or characters used in a manner which may mislead, confuse or otherwise interfere with traffic along a public road.
- (f) Any sign which no longer advertises a bona fide business conducted or a product sold. Such signs are deemed to be obsolete signs and shall be removed by the owner or occupant of the property which they are erected, within sixty (60) days of the date of discontinuance of the business or product.

## 5.6 PROJECTING SIGNS

No projecting sign shall:

- (a) project over a public right-of-way or daylighting triangle;
- (b) exceed twenty (20) square feet in area for that portion of the sign which projects beyond any wall or roof;
- (c) project horizontally more than six (6) feet (1.8 m) from any wall to which it is attached;
- (d) be erect below a height of ten (10) feet (3 m); or
- (e) be permitted to swing freely on its supports.

## 5.7 GROUND SIGNS

No ground sign shall:

- (a) extend beyond a property line or project over a public right-of-way, daylighting triangle, or lot line;
- (b) be less than ten (10) feet (3 m) from any street line or abutting lot line;
- (c) exceed fifty (50) square feet of sign area on a single sign face or one hundred (100) square feet of sign area for both faces combined, except for service stations, which shall not exceed one hundred (100) square feet of sign area on a single sign face or two hundred (200) square feet of sign area for both faces combined; and
- (d) shall not exceed a height of twenty-five (25) feet.

## 5.8 FACIAL WALL SIGNS

No facial wall sign shall cover more than one (1) square foot (0.1 square metre) per lineal foot of the wall on which the sign is affixed, and such coverage is to be allocated proportionally for each business premises in the case of multiple occupancy buildings. In no case however, shall the total area of the facial wall sign for any business premises exceed one hundred (100) square feet (9.3 square metres).

## PART 6: R-1 (SINGLE UNIT DWELLING) ZONE

### 6.1 R-1 USES PERMITTED

No development permit shall be issued in any R-1 (Single Unit Dwelling) Zone except for the following:

Single unit dwellings;  
Home occupations in conjunction with permitted dwellings;  
Day care facilities for not more than seven (7) children and in conjunction with permitted dwellings;  
Fishery support uses;  
Open space uses;  
Existing two unit dwellings;  
Existing mobile dwellings.

### 6.2 R-1 ZONE REQUIREMENTS: RESIDENTIAL USES

In any R-1 Zone, no development permit shall be issued except in conformity with the following:

Minimum Lot Area:	
central sewer and water service	6,000 square feet (557.4 m <sup>2</sup> )
central sewer services/ on-site water	10,000 square feet (929 m <sup>2</sup> )
on-site services	20,000 square feet (1858 m <sup>2</sup> )
Minimum Frontage:	
central sewer and water services	60 feet (18.3 m)
central sewer services/ on-site water	75 feet (23 m)
on-site services	100 feet (32.84 m)
Minimum Front or Flankage Yard	20 feet (6.1 m)
Minimum Rear or Side Yard	8 feet (2.4 m)
Maximum Lot Coverage	35 per cent
Maximum Height of Main Building	35 feet (10.7 m)

### 6.3 OTHER REQUIREMENTS: OPEN SPACE USES

Where open space uses are permitted in any R-1 Zone, the following shall apply:

Minimum Front or Flankage Yard	30 feet (9.1 m)
Minimum Rear or Side Yard	30 feet (9.1 m)

### 6.4 OTHER REQUIREMENTS: HOME OCCUPATIONS

Where home occupations are permitted in any R-1 Zone, the following shall apply:

- (a) The home occupation shall be wholly contained within the dwelling which is the principal residence of the operator of the office.

- (b) No more than three hundred (300) square feet (28 m<sup>2</sup>) of gross floor area shall be devoted to any home occupation.
- (c) No materials or equipment which are obnoxious or create a nuisance by virtue of noise, vibration, smell or glare shall be used on the lot.
- (d) No open storage or outdoor display shall be permitted.
- (e) No sign shall be permitted to advertise the home occupation.
- (f) One off-street parking space, other than that required for the dwelling, shall be provided for every one hundred and fifty (150) square feet (14 m<sup>2</sup>) of floor area devoted to any home occupation. No portion of any parking space shall be located in any required side yard.

#### 6.5 OTHER REQUIREMENTS: DAY CARE FACILITIES

Where day care facilities are permitted in any R-1 Zone, the following shall apply:

- (a) With the exception of outdoor play space, any day care facility shall be wholly contained within the dwelling which is the principle residence of the operator of the dwelling.
- (b) No open storage or display shall be permitted.
- (c) No signs shall be permitted.
- (d) One off-street parking space, other than that required for the dwelling, shall be provided.

#### 6.6 OTHER REQUIREMENTS: FISHERY SUPPORT USES

- (a) Where fishery support uses are permitted in any R-1 Zone, the following shall apply:  
Minimum Side Yard 8 feet (2.4 m)
- (b) Notwithstanding the provisions of Section 4.1, where uses are permitted as fishery support uses in an R-1 Zone, no development permit shall be required.



## PART 7: R-2 (TWO UNIT DWELLING) ZONE

### 7.1 R-2 USES PERMITTED

No development permit shall be issued in any R-2 (Two Unit Dwelling) Zone except for the following:

Single unit dwellings;  
Two unit dwellings;  
Day care facilities for not more than seven (7) children and in conjunction with permitted dwellings except in two unit dwellings where each unit is held under separate title;  
Home occupations in conjunction with permitted dwellings;  
Open space uses;  
Fishery support uses;  
Existing mobile dwellings.

### 7.2 R-2 ZONE REQUIREMENTS: RESIDENTIAL USES

In any R-2 Zone, no development permit shall be issued except in conformity with the following:

Minimum Lot Area:	
central sewer and water services	6,000 square feet (557.4 m <sup>2</sup> ) per dwelling unit
central sewer services/ on-site water	10,000 square feet (929 m <sup>2</sup> ) per dwelling unit
on-site services	20,000 square feet (1858 m <sup>2</sup> )
Minimum Frontage:	
central sewer and water services	60 feet (18.3 m) per dwelling unit
central sewer services/ on-site water	75 feet (23 m) per dwelling unit
on-site services	100 feet (32.84 m)
Minimum Front or Flankage Yard	20 feet (6.1 m)
Minimum Rear or Side Yard	8 feet (2.4 m)
Maximum Lot Coverage	35 per cent
Maximum Height of Main Building	35 feet (10.7 m)

### 7.3 OTHER REQUIREMENTS: OPEN SPACE USES

Where open space uses are permitted in any R-2 Zone, the following shall apply:

Minimum Front or Flankage Yard	30 feet (9.1 m)
Minimum Rear or Side Yard	30 feet (9.1 m)

### 7.4 OTHER REQUIREMENTS: FISHERY SUPPORT USES

- (a) Where fishery support uses are permitted in any R-2 Zone, the following shall apply:
- |                   |                |
|-------------------|----------------|
| Minimum Side Yard | 8 feet (2.4 m) |
|-------------------|----------------|

- (b) Notwithstanding the provisions of Section 4.1, where uses are permitted as fishery support uses in an R-2 Zone, no development permit shall be required.

#### 7.5 OTHER REQUIREMENTS: HOME OCCUPATIONS

Where home occupations are permitted in any R-2 Zone, the following shall apply:

- (a) Any home occupation shall be wholly contained within the dwelling which is the principal residence of the owner of the home occupation.
- (b) No more than three hundred (300) square feet (28 m<sup>2</sup>) of gross floor area shall be devoted to any home occupation.
- (c) No open storage or outdoor display shall be permitted.
- (d) No materials or equipment which is obnoxious or creates a nuisance by virtue of noise, vibration, smell or glare shall be used on the lot.
- (e) One (1) facial wall sign, not exceeding two (2) square feet (.2 m<sup>2</sup>) in size, shall be permitted to advertise the home occupation and shall be constructed of wood.
- (f) One off-street parking space, other than that required for the dwelling, shall be provided for every one hundred and fifty (150) square feet (14 m<sup>2</sup>) of floor area devoted to any home occupation. No portion of any parking space shall be located in any required side yard.

#### 7.6 OTHER REQUIREMENTS: DAY CARE FACILITIES

Where day care facilities are permitted in any R-2 Zone, the following shall apply:

- (a) With the exception of outdoor play space, any day care facility shall be wholly contained within the dwelling which is the principle residence of the operator of the dwelling.
- (b) No open storage or display shall be permitted.
- (c) One (1) facial wall sign, not exceeding two (2) square feet (.2 m<sup>2</sup>) in size, shall be permitted to advertise the day care facility and shall be constructed of wood.
- (d) One off-street parking space, other than that required for the dwelling, shall be provided.

#### 7.7 EXEMPTION: BIRCHLEE MOBILE HOME PARK

Notwithstanding Section 7.1 and 4.10, Birchlee Mobile Home Park, LIMS Number 394767, shall be a permitted use in the R-2 Zone to the extent it is in existence on the effective date of this By-law. (Any expansion shall be subject to Policy P-52 of the Municipal Planning Strategy, and Section 3.6 of this By-law.)

## PART 8: R-2a (RESIDENTIAL HOME OCCUPATION) ZONE

### 8.1 R-2a USES PERMITTED

No development permit shall be issued in any R-2a (Residential Home Occupation) Zone except for the following:

Single unit dwellings;  
Two unit dwellings;  
Day care facilities for not more than seven (7) children and in conjunction with permitted dwellings except in two unit dwellings where each unit is held under separate title;  
Home occupations in conjunction with permitted dwellings;  
Bed and breakfast;  
Open space uses;  
Fishery support uses;  
Existing mobile dwellings.

### 8.2 R-2a ZONE REQUIREMENTS: RESIDENTIAL USES

In any R-2a Zone, no development permit shall be issued except in conformity with the following:

Minimum Lot Area:	
central sewer and water services	6,000 square feet (557.4 m <sup>2</sup> ) per dwelling unit
central sewer services/ on-site water	10,000 square feet (929 m <sup>2</sup> ) per dwelling unit
on-site services	20,000 square feet (1858 m <sup>2</sup> )
Minimum Frontage:	
central sewer and water services	60 feet (18.3 m) per dwelling unit
central sewer services/ on-site water	75 feet (23 m) per dwelling unit
on-site services	100 feet (32.84 m)
Minimum Front or Flankage Yard	20 feet (6.1 m)
Minimum Rear or Side Yard	8 feet (2.4 m)
Maximum Lot Coverage	35 per cent
Maximum Height of Main Building	35 feet (10.7 m)

### 8.3 OTHER REQUIREMENTS: OPEN SPACE USES

Where open space uses are permitted in any R-2a Zone, the following shall apply:

Minimum Front or Flankage Yard	30 feet (9.1 m)
Minimum Rear or Side Yard	30 feet (9.1 m)

#### 8.4 OTHER REQUIREMENTS: FISHERY SUPPORT USES

- (a) Where fishery support uses are permitted in any R-2a Zone, the following shall apply:  
Minimum Side Yard 8 feet (2.4 m)
- (b) Notwithstanding the provisions of Section 4.1, where uses are permitted as fishery support uses in an R-2a zone, no development permit shall be required.

#### 8.5 OTHER REQUIREMENTS: HOME OCCUPATIONS

Where home occupations are permitted in any R-2a Zone, the following shall apply:

- (a) Any home occupation shall be wholly contained within the dwelling or accessory building. The dwelling shall be the principle residence of the operator of the home occupation.
- (b) No more than seven hundred and fifty (750) square feet (70 m<sup>2</sup>) of gross floor area shall be devoted to any home occupation.
- (c) No materials or equipment which is obnoxious or creates a nuisance by virtue of noise, vibration, smell or glare shall be used on the lot.
- (d) One (1) facial wall sign, not exceeding two (2) square feet (.2 m<sup>2</sup>) in size, shall be permitted to advertise the home occupation and shall be constructed of wood.

#### 8.6 OTHER REQUIREMENTS: DAY CARE FACILITIES

Where day care facilities are permitted in any R-2a Zone, the following shall apply:

- (a) With the exception of outdoor play space, any day care facility shall be wholly contained within the dwelling which is the principal residence of the operator of the dwelling.
- (b) No open storage or outdoor display shall be permitted.
- (c) One (1) facial wall sign, not exceeding two (2) square feet (0.2 m<sup>2</sup>) in size, shall be permitted to advertise the day care facility and shall be constructed of wood.
- (d) One off-street parking space, other than that required for the dwelling, shall be provided.

#### 8.7 OTHER REQUIREMENTS: BED AND BREAKFASTS

Where bed and breakfast outlets are permitted in any R-2a Zone, the following shall apply:

- (a) Notwithstanding Section 2.7, no dwelling shall be used for the rental of more than three (3) rooms for sleeping accommodation, with or without meals to the travelling public.
- (b) One (1) facial wall sign, not exceeding two (2) square feet (0.2 m<sup>2</sup>) in size, shall be permitted to advertise the bed and breakfast outlet and shall be constructed of wood.
- (c) One off-street parking space in addition to that required for the dwelling shall be provided for each room to be let.

**PART 8A: R-2b (RESIDENTIAL EQUINE) ZONE (RC-Mar 2/10;E-Apr 17/10)**

**8A.1 R-2b USES PERMITTED**

No development permit shall be issued in any R-2b (Residential Equine) Zone except for the following:

Uses permitted in the R-2a zone;

The keeping of up to two horses for personal use in conjunction with permitted dwellings

**8A.2 R-2b ZONE REQUIREMENTS: R-2a (RESIDENTIAL HOME OCCUPATION) USES**

Where R-2a uses are permitted in any R-2b Zone, the provisions of Part 8 (R-2a zone) shall apply.

**8A.3 OTHER REQUIREMENTS: KEEPING OF UP TO TWO HORSES FOR PERSONAL USE IN CONJUNCTION WITH PERMITTED DWELLINGS:**

Notwithstanding Sections 8A.2, 4.9 and 4.13 (a) (vii), where up to two horses are kept for personal use in conjunction with permitted dwellings in any R-2b Zone, the following shall apply:

- (a) A stable, barn or other building to be used for the keeping of horses shall be constructed, located or otherwise placed on the same lot as the main dwelling and shall:
  - (i) not be located in any front yard;
  - (ii) have a minimum rear or side yard of 20 feet (6.1 m);
  - (iii) be located a minimum of 100 feet (30.5 m) from any dwelling or potable water supply except a dwelling or potable water supply located on the same lot; and
  - (iv) be located a minimum of 200 feet (61 m) from any watercourse.
- (b) The minimum lot area shall be 40,000 square feet (3,716 sq. m.) for the first single animal and an additional 20,000 square feet (1,858 sq. m.) for the second animal.
- (c) Notwithstanding Section 8A.3, Sub-sections (a) and (b), for the property identified as 145 Ferguson's Cove Road (PID #40079840), the minimum required side yard abutting non-residential uses and vacant lots shall be 2 feet and the minimum lot area shall be 40,000 square feet (3,716 sq.m.).

## PART 9: R-6 (RURAL RESIDENTIAL) ZONE

### 9.1 R-6 USES PERMITTED

No development permit shall be issued in any R-6 (Rural Residential) Zone except for the following:

Single unit dwellings;  
Two unit dwellings;  
Private hunting and fishing camps;  
Existing mobile dwellings;  
Day Care facilities for not more than fourteen (14) children and in conjunction with permitted dwellings;  
Business uses in conjunction with permitted dwellings;  
Bed and breakfasts;  
Recreation uses;  
Open space uses;  
Restricted agricultural uses;  
Forestry or woodlot uses, no processing;  
Fishery support and aquaculture uses including retail and wholesale outlets for fish and fish products.  
Arts and craft shops

### 9.2 R-6 ZONE REQUIREMENTS

In any R-6 Zone, no development permit shall be issued except in conformity with the following:

#### Minimum Lot Area:

central sewer and water services unit	6,000 square feet (557.4 m <sup>2</sup> ) per dwelling unit
central sewer services/ on-site water	10,000 square feet (929 m <sup>2</sup> ) per dwelling unit
on-site services	20,000 square feet (1858 m <sup>2</sup> )

#### Minimum Frontage:

central sewer and water services	60 feet (18.3 m) per dwelling unit
central sewer services/ on-site water	75 feet (23 m) per dwelling unit
on-site services	100 feet (32.84 m)

Minimum Front or Flankage Yard 20 feet (6.1 m)

Minimum Rear or Side Yard 8 feet (2.4 m)

Maximum Lot Coverage 35 per cent

Maximum Height of Main Building 35 feet (10.7 m)

### 9.3 OTHER REQUIREMENTS: BUSINESS USES IN CONJUNCTION WITH PERMITTED DWELLINGS

Where business uses in conjunction with dwellings are permitted in any R-6 Zone, the following shall apply:

- (a) Any business use shall be wholly contained within the dwelling or within a single accessory building on the same lot. The dwelling shall be the principle residence of the operator of the business.
- (b) No more than fifty (50) per cent of the gross floor area of any dwelling shall be devoted to any business use and in no case shall the gross floor area of all buildings on one lot devoted to a business use exceed seven hundred and fifty (750) square feet (70 m<sup>2</sup>).
- (c) No materials or equipment which are obnoxious or create a nuisance by virtue of noise, vibration, smell, toxicity or glare shall be used on the lot.
- (d) No open storage or outdoor display shall be permitted.
- (e) One (1) sign shall be permitted to advertise the businesses and the sign shall not exceed sixteen (16) square feet (1.49 m) in size nor contain any electrical, mechanical or moving parts.
- (f) One (1) off-street parking space, other than that required for the dwelling, shall be, provided for every one hundred and fifty (150) square feet (14 m<sup>2</sup>) of floor area devoted to any business. No portion of any parking space shall be located within any required side yard.

#### 9.4 OTHER REQUIREMENTS: DAY CARE FACILITIES

Where day care facilities are permitted in any **R-6 (RC-Jun 25/14;E-Oct 18/14)** Zone, the following shall apply:

- (a) With the exception of outdoor play space, any facility shall be wholly contained within the dwelling.
- (b) No open storage or outdoor display shall be permitted.
- (c) No more than one sign shall be permitted for any facility and no such sign shall exceed sixteen (16) square feet (1.49 m<sup>2</sup>).

#### 9.5 OTHER REQUIREMENTS: RESTRICTED AGRICULTURAL USES

- (a) No more than fifty (50) fowl and/or ten (10) of any other animal being confined to a barn or other structure shall be permitted.
- (b) No more than seven hundred and fifty (750) square feet (70 m<sup>2</sup>) of floor area of any structure shall be used for retail uses accessory to agriculture uses.

#### 9.6 OTHER REQUIREMENTS: FISHERY SUPPORT USES

- (a) Where fishery support uses are permitted in any R-6 Zone, the following shall apply:  
Minimum Side Yard 8 feet (2.4 m)
- (b) Notwithstanding the provisions of Section 4.1, where uses are permitted as fishing support uses in an R-6 Zone, no development permit shall be required.

#### 9.7 EXEMPTION: EXISTING USES

Notwithstanding Section 9.1, the uses identified in Appendix "C" shall be permitted uses within the R-6 Zone. Any expansion of these uses shall be subject to the requirements of Part 17.

9.8 OTHER REQUIREMENTS: ARTS AND CRAFT SHOPS

Where arts and craft shops are permitted in any R-6 zone, the provisions of Section 13.4 shall apply.



## PART 10: R-6a (RURAL MIXED RESIDENTIAL) ZONE

### 10.1 R-6a USES PERMITTED

No development permit shall be issued in any R-6a (Rural Mixed Residential) Zone except for the following:

Single unit dwellings;  
Two unit dwellings;  
Private hunting and fishing camps;  
Mobile dwellings;  
Day Care facilities for not more than fourteen (14) children and in conjunction with permitted dwellings;  
Business uses in conjunction with permitted dwellings;  
Bed and breakfasts;  
Recreation uses;  
Open space uses;  
Restricted agricultural uses;  
Forestry or woodlot uses, no processing;  
Fishery support and aquaculture uses including retail and wholesale outlets for fish and fish products.

### 10.2 R-6a ZONE REQUIREMENTS

In any R-6a Zone, no development permit shall be issued except in conformity with the following:

Minimum Lot Area	20,000 square feet (1858 m <sup>2</sup> )
Minimum Frontage	100 feet
Minimum Front or Flankage Yard	20 feet (6.1 m)
Minimum Rear or Side Yard	8 feet (2.4 m)
Maximum Lot Coverage	35 per cent
Maximum Height of Main Building	35 feet (10.7 m)

### 10.3 OTHER REQUIREMENTS: BUSINESS USES IN CONJUNCTION WITH PERMITTED DWELLINGS

Where business uses in conjunction with dwellings are permitted in any R-6a Zone, the following shall apply:

- (a) Any business use shall be wholly contained within the dwelling or within a single accessory building on the same lot. The dwelling shall be the principle residence of the operator of the business.
- (b) No more than fifty (50) per cent of the gross floor area of any dwelling shall be devoted to any business use and in no case shall the gross floor area of all buildings on one lot devoted to a business use exceed seven hundred and fifty (750) square feet (70 m<sup>2</sup>).
- (c) No materials or equipment which are obnoxious or create a nuisance by virtue of noise, vibration, smell, toxicity or glare shall be used on the lot.

- (d) No open storage or outdoor display shall be permitted.
- (e) One (1) sign shall be permitted to advertise the business and the sign shall not exceed sixteen (16) square feet (1.49 m<sup>2</sup>) in size nor contain any electrical, mechanical or moving parts.
- (f) One (1) off-street parking space, other than that required for the dwelling, shall be provided for every one hundred and fifty (150) square feet (14 m<sup>2</sup>) of floor area devoted to any business. No portion of any parking space shall be located within any required side yard.

#### 10.4 OTHER REQUIREMENTS: DAY CARE FACILITIES

Where day care facilities are permitted in any R-6a Zone, the following shall apply:

- (a) With the exception of outdoor play space, any facility shall be wholly contained within the dwelling.
- (b) No open storage or outdoor display shall be permitted.
- (c) No more than one sign shall be permitted for any facility and no such sign shall exceed sixteen (16) square feet (1.49 m<sup>2</sup>).

#### 10.5 OTHER REQUIREMENTS: RESTRICTED AGRICULTURAL USES

- (a) No more than fifty (50) fowl and/or ten (10) of any other animal being confined to a barn or other structure shall be permitted.
- (b) No more than seven hundred and fifty (750) square feet (70 m<sup>2</sup>) of floor area of any structure shall be used for retail uses accessory to agriculture uses.

#### 10.6 OTHER REQUIREMENTS: FISHERY SUPPORT USES

- (a) Where fishery support uses are permitted in any R-6a Zone, the following shall apply:  
Minimum Side Yard 8 feet (2.4 m)
- (b) Notwithstanding the provisions of Section 4.1, where uses are permitted as fishing support uses in an R-6a Zone, no development permit shall be required.

## PART 11: HCR (HERRING COVE RESIDENTIAL) ZONE

### 11.1 HCR USES PERMITTED

No development permit shall be issued in any HCR (**Herring Cove (RC-Jun 25/14;E-Oct 18/14)** Residential) Zone except in conformity with the following:

Single unit dwellings;

Two unit dwellings;

Existing mobile dwellings

Fishery support uses;

Home occupations in conjunction with permitted dwellings;

Day care facilities for not more than seven (7) children and in conjunction with permitted dwellings;

Open space uses;

**Bed and Breakfast uses not exceeding three bedrooms in conjunction with permitted dwellings;**

**Recreation uses. (RC-Feb 13/01;E-May 5/01)**

### 11.2 HCR ZONE REQUIREMENTS

In any HCR Zone, no development permit shall be issued except in conformity with the following:

Minimum Front or Flankage Yard 20 feet

Minimum rear or Side Yard 8 feet (2.4 m)

Maximum Lot Coverage 35 per cent

Maximum Height of Main Building 35 feet (10.7 m)

#### **Minimum Lot Area**

**Full Central Services: 10,000 square feet (929 square metres) per dwelling unit**

**Onsite Service(s): 30,000 square feet (2787 square metres) per dwelling unit**

**Minimum Lot Frontage 75 feet (22.9m) per dwelling unit  
(RC-Feb 13/01;E-May 5/01)**

### 11.3 OTHER REQUIREMENTS: HOME OCCUPATIONS

Where home occupations are permitted in any HCR Zone, the following shall apply:

- (a) any home occupation shall be wholly contained within the dwelling which is the principle residence of the operator of the home occupation.
- (b) No more than three hundred (300) square feet (28 m<sup>2</sup>) of gross floor area shall be devoted to any home occupation.
- (c) No open storage or outdoor display shall be permitted.
- (d) One (1) facial wall sign, not exceeding two (2) square feet (.2 m<sup>2</sup>) in size, shall be permitted to advertise the home occupation and shall be constructed of wood.

- (e) One off-street parking space, other than that required for the dwelling, shall be provided for every one hundred and fifty (150) square feet of floor area devoted to any home occupation.

#### 11.4 OTHER REQUIREMENTS: DAY CARE FACILITIES

Where day care facilities are permitted in any HCR Zone, the following shall apply:

- (a) With the exception of outdoor play space, any facility shall be wholly contained within the dwelling.
- (b) No open storage or outdoor display shall be permitted.
- (c) One facial wall sign, not exceeding two (2) square feet (.2 m<sup>2</sup>) in size, shall be permitted to advertise the day care facility, and shall be constructed of wood.

#### 11.4A OTHER REQUIREMENTS: BED AND BREAKFAST USES

**Where bed and breakfast uses are permitted in any HCR Zone, the requirements of subsection 8.7 shall apply. (RC-Feb 13/01;E-May 5/01)**

#### 11.5 EXEMPTION: EXISTING MULTI-UNIT DWELLING

Notwithstanding Section 11.1, the multi-unit dwelling on Lot LIMS Number 40075772 shall be a permitted use within the HCR Zone subject to the requirements of Section 11.2.

#### 11.6 OTHER REQUIREMENTS: FISHERY SUPPORT USES

- (a) Where fishery support uses are permitted in any HCR Zone, the following shall apply:

Minimum Side Yard	8 feet (2.4 m)
-------------------	----------------
- (b) Notwithstanding the provisions of Section 4.1, where uses are permitted as fishing support uses in an HCR Zone, no development permit shall be required.

## PART 12: V-1 (HARRIETSFIELD VILLAGE CENTRE) ZONE

- 12.1 No development permit shall be issued in any V-1 (Harrietsfield Village Centre) Zone except for the following:

### Residential Uses

Single unit dwellings;  
Two unit dwellings;  
Existing mobile dwellings;  
Home occupations.

### Community Uses

All uses permitted in the P-2 (Community Facility) Zone.

### Commercial Uses

Retail stores;  
Convenience stores and grocery stores;  
Service and personal service shops;  
Bed and breakfasts;  
Offices;  
Banks and financial institutions;  
Restaurants;  
Taxi and bus depots;  
Nursery and commercial greenhouse operations;  
Medical, dental and veterinary clinics;  
Post office;  
Recreational uses, including racquet sports and health clubs;  
Welding, plumbing and heating, electrical and other special trade contracting services and shops.

## 12.2 V-1 ZONE REQUIREMENTS: COMMERCIAL AND RESIDENTIAL USES

In any V-1 Zone, where uses are permitted as commercial or residential uses, no development permit shall be issued except in conformity with the following:

Minimum Lot Area	20,000 square feet (1858 m <sup>2</sup> )
Minimum Frontage	100 feet (30.5 m)
Minimum Front or Flankage Yard	20 feet (6.1 m)
Minimum Rear or Side Yard	8 feet (2.4 m)
Maximum Lot Coverage	35 per cent
Maximum Height of Main Building	35 feet (10.7 m)

## 12.3 V-1 ZONE REQUIREMENTS: COMMUNITY USES

Where community uses are permitted in any V-1 Zone, the provisions of Part 20 shall apply.

## 12.4 OTHER REQUIREMENTS: COMMERCIAL USES

Where uses are permitted as commercial uses in any V-1 Zone, the following shall apply:

- (a) The gross floor area of any commercial building in any V-1 zone, including any floor area devoted to a permitted dwelling unit, shall not exceed two thousand (2,000) square feet (186 m<sup>2</sup>).
- (b) With the exception of nurseries and greenhouses, no open storage or outdoor display of goods shall be permitted.
- (c) No portion of any lot shall be used for the collection and storage of refuse unless the refuse containers are screened.
- (d) Notwithstanding the provisions of Section 4.27, the parking lot shall be demarcated and paved or otherwise maintained with a stable surface which is treated in a manner so as to prevent the raising of dust and loose particles.
- (e) No portion of any parking space shall be located within any required side or rear yard.

#### 12.5 OTHER REQUIREMENTS: HOME OCCUPATIONS

Where uses are permitted as home occupations in any V-1 Zone, the following shall apply:

- (a) Any home occupation shall be wholly contained within a dwelling or accessory building which is the principle residence of the owner of the home occupation.
- (b) The provisions of Section 12.4 shall apply.

#### 12.6 EXEMPTION: EXISTING USES

Notwithstanding Section 12.1, the uses identified in Appendix "C" shall be permitted uses within the V-1 Zone. Any expansion shall be subject to the requirements of Part 17.

### PART 13: V-2 (HERRING COVE VILLAGE CENTRE) ZONE

**deleted (RC-Feb 13/01;E-May 5/01)**

## PART 14: V-3 (KETCH HARBOUR VILLAGE CENTRE) ZONE

### 14.1 V-3 USES PERMITTED

No development permit shall be issued in any V-3 (Ketch Harbour Village Centre) Zone except for the following:

#### Residential Uses

Single unit dwellings;

Two unit dwellings;

Business uses in conjunction with permitted dwellings.

#### Community Uses

Open space uses;

Educational institutions and uses;

Denominational institutions and uses;

Day care facilities;

Senior citizen housing;

Medical, dental and veterinarian clinics;

Public libraries, museums and galleries;

Post offices;

Recreation uses.

#### Local Business Uses

Fishery support uses, including retail outlets for fish and fish products; Bed and breakfasts;

Arts and crafts shops;

Convenience stores.

### 14.2 V-3 ZONE REQUIREMENTS

In any V-3 Zone, where uses are permitted as residential, community or local business uses, no development permit shall be issued except in conformity with the following:

Minimum Lot Area	20,000 sq.ft. (1858 m <sup>2</sup> )
Minimum Frontage	100 feet (30.5 m)
Minimum Front or Flankage Yard	20 feet (6.1 m)
Minimum Rear or Side Yard	8 feet (2.4 m)
Maximum Lot Coverage	35 per cent
Maximum Height of Main Building	35 feet (10.7 m)

### 14.3 V-3 ZONE REQUIREMENTS: BUSINESS USES IN CONJUNCTION WITH PERMITTED DWELLINGS

Where business uses in conjunction with dwellings are permitted in any V-3 Zone, the following shall apply:

- (a) Any business use shall be wholly contained within the dwelling or within a single accessory building on the same lot. The dwelling shall be the principle residence of the owner of the business.

- (b) No more than fifty (50) per cent of the gross floor area of any dwelling shall be devoted to any business use and in no case shall the gross floor area of all buildings on one lot devoted to a business use exceed seven hundred and fifty (750) square feet.
- (c) No materials or equipment which are obnoxious or create a nuisance by virtue of noise, vibration, smell, toxicity, or glare shall be used on the lot.
- (d) No open storage or outdoor display shall be permitted.
- (e) No more than one sign shall be permitted to advertise the business use, and the sign shall not exceed sixteen (16) square feet in size or contain any electrical, mechanical or moving parts.
- (f) Where a lot has access to the Ketch Harbour Road, one (1) off street parking space, other than that required for the dwelling, shall be provided for every one hundred and fifty (150) square feet of floor area devoted to any business. No portion of any parking space shall be located within any required side yard.

#### 14.4 V-3 ZONE REQUIREMENTS: DAY CARE FACILITIES

Where day care facilities are permitted in any V-3 Zone, the following shall apply:

- (a) With the exception of outdoor play space, any facility shall be wholly contained within the dwelling.
- (b) No open storage or outdoor display shall be permitted.
- (c) No more than one sign shall be permitted, and no such sign shall exceed sixteen (16) square feet (1.49 m<sup>2</sup>).

#### 14.5 V-3 ZONE REQUIREMENTS: LOCAL BUSINESS USES

Where local business uses are permitted in any V-3 Zone, the following shall apply:

- (a) The combined gross floor area of all commercial building on a lot in any V-3 Zone shall not exceed two thousand (2,000) square feet (186 m<sup>2</sup>).
- (b) No open storage or outdoor display of goods shall be permitted.
- (c) No portion of any lot shall be used for the collection and storage of refuse unless the refuse containers are screened.
- (d) No electrical or mechanical signs shall be permitted to advertise the commercial use.
- (e) Notwithstanding the provisions of Section 4.27, the parking lot shall be paved or otherwise maintained with a stable surface which is treated in a manner so as to prevent the raising of dust and loose particles.
- (f) No portion of any parking space shall be located within any required side or rear yard.

#### 14.6 EXEMPTION: EXISTING USES

Notwithstanding Section 14.1, the uses identified in Appendix "C" shall be permitted uses within the V-3 Zone. Any expansion shall be subject to the requirements of Part 17.



14.7 OTHER REQUIREMENTS: FISHERY SUPPORT USES

- (a) Where fishery support uses are permitted in any V-3 Zone, the following shall apply:  
Minimum Side Yard 8 feet (2.4 m)
- (b) Notwithstanding the provisions of Section 4.1, where uses are permitted as fishing support uses in an V-3 Zone, no development permit shall be required.

## PART 15: V-4 (SAMBRO GENERAL BUILDING) ZONE

### 15.1 V-4 USES PROHIBITED

A development permit shall be issued for all uses in the V-4 (Sambro General Building) Zone, except for the following:

Mobile home parks;  
Salvage yards

**C&D Materials Transfer Stations, C&D Materials Processing Facilities and C&D Materials Disposal Sites (RC-Sep 10/02;E-Nov 9/02).**

### 15.2 V-4 ZONE REQUIREMENTS

Minimum Lot Area	20,000 square feet (1858 m <sup>2</sup> )
Minimum Frontage	100 feet
Minimum Front or Flankage Yard	20 feet (6.1 m)
Minimum Rear or Side Yard	8 feet (2.4 m)
Maximum Height of Main Building	35 feet (10.7 m)

### 15.3 OTHER REQUIREMENTS: INDUSTRIAL USES

Where industrial uses are permitted in any V-4 Zone, the following shall apply:

- (a) With the exception of resource and service industries, any industrial operation shall be conducted and wholly contained within a building.
- (b) With the exception of resource industries, no materials or equipment which is obnoxious shall be used on the lot.

### 15.4 OTHER REQUIREMENTS: FISHERY SUPPORT USES

- (a) Where fishery support uses are permitted in any V-4 Zone, the following shall apply:

Minimum Side Yard	8 feet (2.4 m)
-------------------	----------------
- (b) Notwithstanding the provisions of Section 4.1, where uses are permitted as fishing support uses in an V-4 Zone, no development permit shall be required.

## PART 16: C-1 (LOCAL BUSINESS) ZONE

### 16.1 C-1 USES PERMITTED

No development permit shall be issued in any C-1 (Local Business) Zone except for the following:

#### Commercial Uses

Convenience stores, hardware stores and drug stores;

Grocery stores;

Bed and breakfasts;

Service and personal service shops;

Flower shops;

**Arts and Craft shops (CC-Oct 6/97;E-Nov 4/97)**

#### Residential Uses

Single unit dwellings;

Two unit dwellings;

Home occupations.

### 16.2 C-1 ZONE REQUIREMENTS

#### Minimum Lot Area:

central sewer and water services	10,000 square feet (929 m <sup>2</sup> )
central sewer services/ on-site water	10,000 square feet (929 m <sup>2</sup> )
on-site services	20,000 square feet (1858 m <sup>2</sup> )

#### Minimum Frontage:

central sewer and water services	75 feet (23 m)
central sewer services/ on-site water	75 feet (23 m)
on-site services	100 feet (32.84 m)

Minimum front or flankage yard 20 feet (6.1 m)

Minimum rear or side yard 8 feet (2.4 m)

Maximum lot coverage 35 per cent

Maximum height of main building 35 feet (10.7 m)

### 16.3 OTHER REQUIREMENTS: COMMERCIAL USES

Where uses are permitted as Commercial Uses in any C-1 zone the following shall apply:

- (a) The combined gross floor area of all commercial buildings on a lot in any C-1 Zone, including any floor area devoted to a permitted dwelling unit, shall not exceed two thousand (2,000) square feet (186 m<sup>2</sup>).
- (b) No open storage or outdoor display of goods shall be permitted.
- (c) No portion of any lot shall be used for the collection and storage of refuse unless the refuse containers are screened.

- (d) Notwithstanding the provisions of Section 4.27, the parking lot shall be demarcated and paved or otherwise maintained with a stable surface which is treated in a manner so as to prevent the raising of dust and loose particles.
- (e) No portion of any parking space shall be located within any required side or rear yard.

16.4 OTHER REQUIREMENTS: HOME OCCUPATIONS

Where home occupations are permitted in any C-1 Zone, the provisions of Part 9.3 (R-6) Zone shall apply.

16.5 OTHER REQUIREMENTS: ACCESS

Where any commercial use is permitted in a C-1 Zone on Lot LIMS Number 40055543, no portion of the lot may have access to the Ketch Harbour Road, except where access from Village Road cannot be granted by the Department of Transportation.

## PART 17: C-2 (GENERAL BUSINESS) ZONE

### 17.1 C-2 USES PERMITTED

No development permit shall be issued in any C-2 (General Business) Zone except for the following:

#### Commercial Uses

Retail stores;  
Grocery stores;  
Service and personal service shops;  
Offices;  
Banks and financial institutions;  
Restaurants except drive-in and take-out restaurants;  
Nursery and commercial greenhouse operations;  
Medical, dental and veterinary clinics;  
Post offices;  
Outdoor display courts;  
Building supply and factory outlets;  
Marinas, boat yards, and marine repair related operations;  
Welding, plumbing, heating, electrical and other special trade contracting services and shops.

#### Residential Uses

Single and two unit dwellings including a dwelling unit for maintenance or security personnel.  
Bed and breakfasts;  
Home occupations;

#### Institutional Uses

All uses permitted in the P-2 (Community Facility) Zone.

### 17.2 C-2 ZONE REQUIREMENTS

No development permit shall be issued except in conformity with the following:

#### Minimum Lot Area:

central sewer and water services	10,000 square feet (929 m <sup>2</sup> )
central sewer services/ on-site water	10,000 square feet (929 m <sup>2</sup> )
on-site services	20,000 square feet (1858 m <sup>2</sup> )

#### Minimum Frontage:

central sewer and water services	75 feet (23 m)
central sewer services/ on-site water	75 feet (23 m)
on-site services	100 feet (32.84 m)

Minimum Front or Flankage Yard 20 feet (6.1 m)

Minimum Rear or Side Yard 15 feet (4.5 m)

Maximum Lot Coverage 50 per cent

Maximum Height of Main Building            35 feet (10.7 m)

17.3    OTHER REQUIREMENTS: COMMERCIAL USES

In any C-2 (General Business) Zone, the following shall apply:

- (a) The gross floor area of any commercial use shall not exceed five thousand (5,000) square feet (465 m<sup>2</sup>).
- (b) Except for nursery and greenhouse operations, no outdoor display shall be permitted.
- (c) No portion of any lot shall be used for the collection and storage of refuse unless the refuse containers are screened.
- (d) Notwithstanding the provisions of Section 4.27 the parking lot shall be paved or otherwise maintained with a stable surface which is treated in a manner so as to prevent the raising of dust and loose particles.
- (e) No portion of any parking space shall be located within any required side or rear yard.
- (f) Notwithstanding the provisions of Section 17.2, where any commercial use abuts another commercial or industrial use, the abutting rear or side yard requirement may be reduced to eight (8) feet.

17.4    OTHER REQUIREMENTS: COMMUNITY FACILITY USES

Where community facility uses are permitted in any C-2 Zone, the provisions of Part 18 (P-2 Community Facility) Zone shall apply.

17.5    OTHER REQUIREMENTS: HOME OCCUPATIONS

Where home occupations are permitted in any C-2 Zone, the provisions of Part 8.5 shall apply.

17.6    EXEMPTION: EXISTING USES

Notwithstanding Section 17.1, the uses identified in Appendix "C" shall be permitted uses within the C-2 Zone. Any expansion of these uses shall be subject to the requirements of Part 17. For the purpose of this Section, outdoor display courts are permitted subject to the requirements of Section 17.9 of the by-law.

17.7    OTHER REQUIREMENTS: CONVERSION OF EXISTING COMMERCIAL STRUCTURES

Notwithstanding Section 17.1, any existing commercial structure in a C-2 Zone shall be permitted to convert to a multi-unit residential dwelling, provided that the total number of dwelling units does not exceed four, and that no expansion to the existing structure is permitted.

17.8 EXEMPTION: SPRYFIELD LUMBER MART LIMITED

The property identified as LIMS No. 40074593 shall be exempted from the gross floor area requirement of Clause 17.3(a), but shall be subject to all other requirements of PART 17.

17.9 OTHER REQUIREMENTS: OUTDOOR DISPLAY COURTS

Outdoor display courts shall only be permitted in conjunction with any C-2 Zone uses listed within Appendix "C" of this by-law, subject to the following requirements:

- (a) The goods or materials displayed are accessory to the main use on the property;
- (b) No outdoor display shall be located within ten (10) feet of any front lot line;
- (c) No outdoor display shall be permitted in any required yard where the required yard abuts any residential or community facility use except where a visual and physical barrier, measuring at least six (6) feet (1.8 m) in height, is provided, in which case there will be no open outdoor display within five (5) feet of the abutting side or rear lot line;
- (d) Any area devoted to outdoor display shall be limited to a contiguous area of one thousand (1,000) square feet and in no case shall the combined outdoor display area and gross floor area of all buildings exceed five thousand (5,000) square feet; and
- (e) No mobile signs shall be permitted on the property that advertises any activity associated with the outdoor display court.

## PART 18: C-5 (INDUSTRIAL COMMERCIAL MIX) ZONE

### 18.1 C-5 USES PERMITTED

No development permit shall be issued in any C-5 (Industrial Commercial Mix) Zone except for the following:

All uses permitted in the C-2 Zone, except single and two unit dwellings.

Any industrial, assembly, or manufacturing operation which is conducted and wholly contained within a building and which does not involve process water treatment;

Service industries;

General contracting storage yards and services;

Machinery sales and service outlets;

Service stations;

Trucking, landscaping and excavating services;

Automotive repair outlets and auto body shops;

Warehouses;

Hotels and motels;

Restaurants including drive-in and take out restaurants;

Outdoor display courts;

All uses permitted in the P-2 (Community Facility) Zone;

Mobile dwellings and single unit dwellings which are accessory to any permitted use.

**Composting operations (see section 4.29)(MC-Feb 26/96;E-Mar 28/96)**

### 18.2 C-5 ZONE REQUIREMENTS

In any C-5 Zone, no development permit shall be issued except in conformity with the following:

Minimum Lot Area	20,000 square feet (1858 m <sup>2</sup> )
Minimum Frontage	100 feet (32.84 m)
Minimum Front or Flankage Yard	30 feet (4.1 m)
Minimum Rear or Side Yard	15 feet (4.5 m)
Minimum Separation Distance Between	
Accessory Buildings	15 feet (4.5 m)
Maximum Height of Main Building	35 feet (10.7 m)

### 18.3 OTHER REQUIREMENTS: SINGLE AND TWO UNIT DWELLINGS

Notwithstanding Section 18.1, no person shall erect any single or two unit dwelling unless such a dwelling is located on a lot in existence on the effective date of this By-law, except where a single or two unit dwelling is accessory to any permitted use.

### 18.4 OTHER REQUIREMENTS: SEPARATION DISTANCES

- (a) Where any C-5 Zone abuts any park or conservation zone, no building or structure shall be permitted within fifty (50) feet (16.4 m) of the abutting zone.
- (b) Where any commercial or industrial use in any C-5 Zone abuts any residential or community facility use, no building or structure shall be permitted within fifty (50)



feet (16.4 m) of the abutting use.

- (c) Where any C-5 Zone abuts any other zone, no bulk fuel storage tanks shall be permitted within one hundred (100) feet (32.84 m) of the abutting zone, and in no case shall any bulk fuel storage tanks be located within one hundred (100) feet of a residential use.

18.5 OTHER REQUIREMENTS: OPEN STORAGE, OUTDOOR DISPLAY, PARKING AND LOADING AREAS

- (a) No open storage shall be permitted in any required front or side yard.
- (b) No outdoor display shall be permitted within ten (10) feet (3 m) of any lot line.
- (c) No open storage or outdoor display shall be permitted in any yard which abuts any residential or community facility use except where a visual barrier is provided.
- (d) No parking or loading area shall be permitted in any required side or rear yard where the required yard abuts any residential or community facility use except where a visual barrier is provided.
- (e) Notwithstanding the provisions of Section 4.27, the parking area shall be paved or otherwise maintained with a stable surface which is treated in a manner so as to prevent the raising of dust and loose particles.

18.6 OTHER REQUIREMENTS: ENVIRONMENTAL

No building, structure, open storage or parking area shall be located within twenty-five (25) feet of Fish Brook or within twenty-five (25) feet of Spruce Hill Lake.

18.7 OTHER REQUIREMENTS: SERVICE STATIONS

Where a service station is erected in any C-5 Zone, the following shall apply:

- (a) Minimum Lot Area: 30,000 square feet (2787 m<sup>2</sup>);
- (b) Minimum Lot Frontage: 150 feet (45.7 m);
- (c) No portion of any pump island shall be located closer than twenty (20) feet (6.1 m) from any street line;
- (d) The minimum distance between ramps or driveways shall be thirty (30) feet (9.1 m);
- (e) The minimum distance from a ramp or driveway to a road intersection shall be fifty (50) feet (16.4 m);
- (f) The minimum angle of intersection of a ramp to a road line shall be forty-five (45) degrees;
- (g) The width of a ramp shall be a minimum of twenty (20) feet (6.1 m) and a maximum of twenty-six (26) feet (7.9 m);
- (h) Any materials or automobiles being stored as part of the service station operation shall be enclosed by a fence, vegetation or other means which provide a visual and physical barrier.

18.8 OTHER REQUIREMENTS: AUTO BODY SHOPS

- (a) Any materials associated with an auto body shop operation shall be contained within a building or otherwise enclosed by a fence, vegetation or other means which provide a visual and physical barrier.

- (b) No open storage of vehicles or equipment shall be permitted within any required yard.

18.9 OTHER REQUIREMENTS: ONE MAIN BUILDING ON A LOT

No person shall erect more than one (1) main industrial or commercial building on a lot within any C-5 (Industrial Commercial Mix) Zone. Developments which involve more than one main commercial or industrial building on a lot may be considered by development agreement subject to Policy P-81 of the Municipal Planning Strategy and Section 3.6 of this By-law.

18.10 OTHER REQUIREMENTS: USES WITHIN 250 FEET

Notwithstanding Section 18.2, no development permit shall be issued for any commercial or industrial use located within 250 feet of the Old Sambro Road north of Fish Brook, or within 250 feet of Long Lake Provincial Park, except pursuant to Section 3.6(j) of this By-law.

## PART 19: F-1 (FISHING VILLAGE) ZONE (RC-Jun 25/14;E-Oct 18/14)

### 19.1 F-1 USES PERMITTED

No use shall be permitted in any F-1 (Fishing **Village**) (RC-Jun 25/14;E-Oct 18/14) Zone except for the following:

#### Fishing Uses

Fish houses and sheds;

Boat and equipment manufacturing, sales and service;

Wharf storage buildings;

Fishery Uses including fish and aquaculture processing operations which do not involve reduction.

#### Commercial Uses

Fish and shellfish wholesale and retail stores;

Wholesale and retail outlets, supply sales directly related to the fishing or aquaculture industry, for fish and fish products;

Charter boat services.

#### Residential Uses

Residential uses permitted in the **HCR (Herring Cove Residential)** (RC-Jun 25/14;E-Oct 18/14) Zone.

### 19.2 F-1 ZONE REQUIREMENTS

No uses in any F-1 (Fishing **Village**) (RC-Jun 25/14;E-Oct 18/14) Zone shall be permitted except in conformity with the following:

#### **Minimum Lot Area**

<b>Full Central Services:</b>	<b>10,000 square feet (929 square metres) per dwelling unit</b>
-------------------------------	---

<b>Onsite Service(s):</b>	<b>30,000 square feet (2787 square metres) per dwelling unit</b>
---------------------------	--

<b>Minimum Lot Frontage</b>	<b>75 feet (22.9m) per dwelling unit (RC-Feb 13/01;E-May 5/01)</b>
-----------------------------	--

### 19.3 OTHER REQUIREMENTS: FISHERY SUPPORT USES

- (a) Where fishery support uses are permitted in any F-1 Zone, the following shall apply:  
Minimum Side Yard 8 feet (2.4 m)
- (b) Notwithstanding the provisions of Section 4.1, where uses are permitted as fishery support uses in an F-1 Zone, no development permit shall be required.

### 19.4 OTHER REQUIREMENTS: RESIDENTIAL USES

Where residential uses are permitted in any F-1 Zone, the provisions of Part 11 (VR Zone) shall apply, with the exception of Lot LIMS Number 390302 (Portuguese Cove), which shall meet the requirements of Part 7 (R-2 Zone).

## PART 20: P-2 (COMMUNITY FACILITY) ZONE

### 20.1 P-2 USES PERMITTED

No development permit shall be issued in any P-2 (Community Facility) Zone except for the following:

#### Institutional Uses

Educational institutions and uses;  
Denominational institutions and uses;  
Day care facilities;  
A single unit dwelling in conjunction with a day care facility;  
Fire and police stations;  
Government offices and public works;  
Hospitals, medical and veterinary clinics;  
Senior citizen housing;  
Public libraries, museums and galleries;  
Fraternal centres and halls;  
Community centres and halls;  
Recreation uses;  
Residential care facilities.

#### Open Space Uses

Public and private parks and playgrounds;  
Cemeteries;  
Historic sites and monuments;  
Marine related navigational aids.

### 20.2 P-2 ZONE REQUIREMENTS: COMMUNITY FACILITIES

In any P-2 Zone, where uses are permitted as Institutional Uses, no development permit shall be issued except in conformity with the following:

Minimum Lot Area	20,000 square feet (1858 m <sup>2</sup> )
Minimum Frontage	100 feet (30.5 m)
Minimum Front or Flankage Yard	30 feet (9.1 m)
Minimum Rear or Side Yard	½ the height of the main building
Maximum Lot Coverage	50 per cent

### 20.3 OTHER REQUIREMENTS: PARKING AREAS

- (a) No parking areas shall be permitted within any required side or rear yard.
- (b) All parking areas shall be demarcated and paved or otherwise treated with a stable surface which is treated in a manner to prevent the raising of dust and loose particles.

## PART 21: P-3 (PARK) ZONE

### 21.1 P-3 USES PERMITTED

No development permit shall be issued in any P-3 (Park) Zone except for the following:

#### Park Uses

Public parks, trails and playgrounds;

Conservation related uses;

Museums, interpretive centres, and buildings associated with park maintenance;

Marine related navigational aids;

Historic sites and monuments.

### 21.2 P-3 ZONE REQUIREMENTS

In any P-3 (Park) Zone, no development permit shall be issued except in conformity with the following:

Minimum Front or Flankage Yard	20 feet (6.1 m)
Minimum Rear or Side Yard	8 feet (2.4 m)
Maximum Height of Main Building	35 feet (10.7 m)

## **PART 21A: RPK (REGIONAL PARK) ZONE (RC-Jun 25/14;E-Oct 18/14)**

### **21A.1 RPK USES PERMITTED**

No development permit shall be issued in any RPK (Regional Park) Zone except for the following:

#### **Park Uses**

Recreation uses

Conservation uses

Museums, interpretive centres, and buildings associated with park maintenance

Marine related navigational aids

Uses accessory to the foregoing uses

### **21A.2 RPK ZONE REQUIREMENTS**

In any RPK Zone, no development permit shall be issued except in conformity with the following:

Minimum Front or Flankage Yard:	20m
Minimum Side or Rear Yard:	20m
Maximum Lot Coverage:	50% for lots less than 4 ha in area, or 5% for lots 4 ha or more in area
Maximum Height of Main Building	10.7 m

## PART 22: P-4 (CONSERVATION) ZONE

### 22.1 P-4 USES PERMITTED

No development permit shall be issued in any P-4 (Conservation) Zone except for the following:

#### Conservation Uses

Conservation related uses;  
Public parks and playgrounds, no buildings;  
Trails;  
Cemeteries;  
Historic sites and monuments;  
Navigational aids;  
Existing hunting and fishing camps.

### 22.2 P-4 ZONE REQUIREMENTS

Minimum Front or Flankage Yard	30 feet
Minimum Rear or Side Yard	30 feet

**PART 22A: PA (PROTECTED AREA) ZONE (RC-Jun 25/14;E-Oct 18/14)**

**22A.1 PA USES PERMITTED**

No development permit shall be issued in any PA (Protected Area) Zone except for the following:

Scientific study and education, involving no buildings  
Trails, boardwalks or walkways  
Conservation uses  
Uses accessory to the foregoing uses

**22A.2 PA ZONE REQUIREMENTS**

In any PA Zone, no development permit shall be issued except in conformity with the following:

Minimum Lot Area:	930m <sup>2</sup>
Minimum Frontage:	30.5m
Minimum Front or Flankage Yard:	20m
Minimum Side or Rear Yard:	20m

**22A.3 OTHER REQUIREMENTS: GRADE ALTERATION AND VEGETATION REMOVAL**

Within any PA zone, no infilling, excavation, alteration of grade or removal of vegetation shall be permitted. The construction of board walks, walkways or trails shall be permitted provided that no infilling or alteration of grade occurs other than the placement of piles or the placement of trails on top of the existing grade.



## PART 23: P-5 (SPECIAL FACILITY) ZONE

### 23.1 P-5 USES PERMITTED

No development permit shall be issued in any P-5 (Special Facility) Zone except for the following:

#### Special Facility Uses

Telecommunication stations and facilities;  
Research facilities;  
Existing dwelling units;  
Dwelling units accessory to permitted uses;  
Educational institutions and uses;  
Fire and police stations;  
Community centres and halls.

#### Conservation Uses

Conservation related uses;  
Public parks, trails and playgrounds;  
Cemeteries;  
Historic sites and monuments;  
Navigational aids.

### 23.2 P-5 ZONE REQUIREMENTS

Minimum Lot Area	20,000 square feet (1858 m <sup>2</sup> )
Minimum Frontage	100 feet (30.5 m)
Minimum Front or Flankage Yard	30 feet (9.1 m)
Minimum Rear or Side Yard	½ the height of the main building
Maximum Lot Coverage	50 per cent

### 23.3 OTHER REQUIREMENTS: RESIDENTIAL USES

Where dwelling units are permitted in any P-5 Zone, the provisions of Part 6 (R-1 Zone) shall apply.

## PART 24: D-1 (DND) ZONE

### 24.1 D-1 USES PERMITTED

No development permit shall be issued in any D-1 (DND) Zone except for the following:

Canadian Military Installations.

### 24.2 D-1 ZONE REQUIREMENTS

In any D-1 Zone, no development permit shall be issued except in conformity with the provisions of Part 6 (Single Unit Dwelling) Zone.

## **PART 25: UR (URBAN RESERVE) ZONE (RC-Jun 25/14;E-Oct 18/14)**

### **25.1 UR USES PERMITTED**

No development permit shall be issued in any UR (Urban Reserve) Zone except for the following:

Single unit dwellings, on existing lots provided that a private on-site sewage disposal system and well are provided on the lot

Passive recreation uses

Uses accessory to the foregoing uses

### **25.2 UR ZONE REQUIREMENTS**

In any UR Zone, no development permit shall be issued except in conformity with the following:

Minimum Front or Flankage Yard: 9.1m

Minimum Side Yard: 2.5m

Minimum Rear Yard: 2.5m

Maximum Lot Coverage: 35%

Maximum Height of Main Building: 11m

## **PART 25A: CD-1 (C&D MATERIALS TRANSFER STATIONS) ZONE**

### **25A.1 CD -1 USES PERMITTED**

No development permit shall be issued in any CD-1 (Transfer Stations) Zone except for the following, pursuant to the Site Plan Approval process:

Construction and Demolition Materials Transfer Stations  
Uses accessory to permitted use

### **25A.2 CD-1 ZONE REQUIREMENTS**

In any CD-1 Zone, no development permit shall be issued except in conformity with the following:

Minimum Lot Area	3,716 square metres (40,000 square feet) - central services 11,148 square metres (120,000 square feet) - on-site services
Minimum Frontage	15 metres (49.2 feet) - central services 30 metres (98.4 feet) - on-site services
Minimum Front Yard	25 metres (82.0 feet)
Minimum Side Yard	30 metres (98.4 feet)
Minimum Rear Yard	30 metres (98.4 feet)
Maximum Lot Coverage	50 %
Maximum Height	11 metres (36.0 feet)

### **25A.3 OTHER REQUIREMENTS: C&D Materials Transfer Stations**

No development permit shall be issued for a C&D Materials Transfer Station except in compliance with the following provisions:

- (a) any building or structure shall meet the following separation distances:
  - (i) from any property line 30 metres (98.4 feet)
  - (ii) from the nearest residential dwelling or institutional use 60 metres (196.9 feet)
  - (iii) from a watercourse 30 metres (98.4 feet)
- (b) notwithstanding Section 25A.3(a), where a building or structure is not to be located within 250 metres of a residential or institutional use or building, the building setback from any property line may be reduced to 10 metres (32.8 feet).
- (c) notwithstanding Section 25A.3(a), any C&D Materials Transfer Station which is to be totally enclosed within a building (no outdoor storage of material, product, or equipment) setback from any property line may be reduced to 10 metres (32.8 feet).

### **25A.4 General Requirements: C&D Materials Operations**

No development permit shall be issued for a C&D Materials Operation except in compliance with the following provisions:

- (a) no operation shall be permitted, result in, causes or produces any of the following effects discernible outside any building or structure or affecting any adjacent property:
  - (i) noise or sound which is obnoxious because of its volume, duration, intermittent beat, frequency, or shrillness;
  - (ii) dissemination of smoke, fumes, gas, dust, odour, or any atmospheric pollutant; or
  - (iii) discharge of any waste material whatsoever into a watercourse or water resource except in accordance with the applicable government requirements.
- (b) notwithstanding any other provisions of this by-law, C&D Materials Operation may occur either inside or outside of a building;
- (c) there shall be a landscaped area of at least 4.5 metres (14.8 feet) in depth that runs the length of and directly abuts the front lot line, excluding driveway openings, and such land within this required landscaped area shall be grassed (or other appropriate vegetation ground cover) and trees and shrubs shall be planted (trees shall be a minimum of 1.8 metres (6 feet) in height) or existing trees and shrubs shall be maintained at a minimum rate of one (1) plant per each 2 metres (6.6 feet) of frontage;
- (d) notwithstanding Section 25A.4(c), if the front yard area is treed, the landscaped area is not required but all vegetation within 10 metres of the front lot line shall be retained and maintained;
- (e) no portion of the operation shall be located within any side, rear, or front yard setback;
- (f) no operation shall have direct access to either a local or subdivision road, as determined by the Municipality's Traffic and Transportation Services Division and any access road for such operations shall not occur through lands zoned for residential (R-1, R-2, R-2a, R-6, and R-6a) or community use (P-2, P-3, P-4, and P-5); and
- (g) no portion of the operation shall be located within a 1:100 year floodplain.

#### **25A.5 General Requirements: Site Plan Approval**

All C&D operations are subject to approval of a site plan. The Development Officer shall approve a site plan where the following matters have been addressed:

- a) driveway access to the site shall be located in such a manner to minimize land use impacts on adjacent land uses;
- b) separation distances shall be provided from any structure on the site and abutting residential or community facility properties to ensure the development does not negatively impact upon surrounding properties;
- c) all off-street loading and unloading areas, stockpiles, processing areas, and parking facilities shall be located on the site such that no aspect impacts upon adjacent uses or streets and screening can be in the form of fencing, berms, vegetation, or a combination of elements;
- d) a landscaping plan shall be prepared that protects and minimize land use impacts on adjoining lands and the plan shall indicate the type, size, and location of all landscaping elements including the landscaping along the front of the property, to achieve the objective of the plan;

- e) within any designated side and rear yards, existing vegetation shall be retained unless it does not provide for adequate screening measures;
- f) all outdoor lighting shall be oriented such that it is directed away from adjacent properties;
- g) all solid waste storage containers shall be screened from adjacent properties and streets;
- h) impact of the location, number and size of signs;
- i) measures, including but not limited to lot grading, berms, shall be required to adequately address the management of stormwater and surface water; and
- j) provisions are established to ensure the operation and any required site improvements are maintained to a high standard.

## **PART 25B: CD-2 (C&D MATERIALS PROCESSING FACILITIES) ZONE**

### **25B.1 CD-2 USES PERMITTED**

No development permit shall be issued in any CD-2 (C&D Recycling) Zone except for the following, pursuant to the Site Plan Approval process:

Construction and Demolition Materials Processing Facilities

All CD-1 Zone uses

Uses Accessory to permitted uses, excluding construction and demolition disposal  
Accessory dwelling unit which are provided for the purposes of safety, security, or maintenance

### **25B.2 CD-2 ZONE REQUIREMENTS**

In any CD-2 Zone, no development permit shall be issued except in conformity with the following:

Minimum Lot Area	3,716 square metres (40,000 square feet) central services 11,148 square metres (120,000 square feet) on-site services
Minimum Frontage	15 metres (49.2 feet) central services 30 metres (98.4 feet) on-site services
Minimum Front Yard	30 metres (98.4 feet)
Minimum Side Yard	30 metres (98.4 feet)
Minimum Rear Yard	30 metres (98.4 feet)
Maximum Lot Coverage	50 %
Maximum Height	11 metres (36.0 feet)

### **25B.3 OTHER REQUIREMENTS: C&D Materials Transfer Stations**

In any CD-2 Zone, no development permit shall be issued for any C&D Materials Transfer Stations except in conformity with the provision for such a use as contained within the CD-1 Zone.

### **25B.4 OTHER REQUIREMENTS: C&D Materials Processing Facilities**

No development permit shall be issued for C&D materials processing facility except in compliance with the following provisions:

- (a) any building, structure or area used for processing shall meet the following separation distances:
  - (i) from any property line 60 metres (196.8 feet)
  - (ii) from the nearest residential dwelling or institutional use 90 metres (295.3 feet)
  - (iii) from a watercourse 60 metres (196.8 feet)
- (b) notwithstanding Section 25B.4(a), where a building or structure is not to be located within 250 metres of a residential or institutional use or building, the building setback from any property line may be reduced to 10 metres (32.8

- feet).
- (c) notwithstanding Section 25B.4(a), any C&D Materials Processing Facility which is to be totally enclosed within a building (no outdoor storage of material, product, processing area, or equipment) setback from any property line may be reduced to 10 metres (32.8 feet).

**25B.5    General Requirements: C&D Materials Operations**

No development permit shall be issued for a C&D Materials Operation except in compliance with the following provisions:

- (a) the operation complies with the general zone requirements as outlined in Section 25A.4.
- (b) notwithstanding Sections 25B.2 to 25B.4, inclusive, more than one C&D Materials operation is permitted on a site and each use shall be subject to the applicable standards unless the uses are not clearly differentiated than the more stringent requirements shall apply to the permitted uses.

**25B.6    General Requirements: Site Plan Approval**

C&D Materials Operations are subject to approval of a site plan. The Development Officer shall approve a site plan for each use which deals with those matters outlined in Section 25A.5.



## **PART 25C: CD-3 (C&D MATERIALS DISPOSAL SITES) ZONE**

### **25C.1 CD-3 USES PERMITTED**

No development permit shall be issued in any CD-3 (C&D Disposal) Zone except for the following, pursuant to the Site Plan Approval process:

Construction and Demolition Materials Disposal Sites

All CD-2 zone uses

Uses Accessory to permitted uses

Accessory dwelling unit which are provided for the purposes of safety, security, or maintenance

### **25C.2 CD-3 ZONE REQUIREMENTS**

In any CD-3 Zone, no development permit shall be issued except in conformity with the following:

Minimum Lot Area	11,148 square metres (120,000 square feet)
Minimum Frontage	15 metres (49.2 feet) central services 30 metres (98.4 feet) on-site services
Minimum Front Yard	50 metres (164 feet)
Minimum Side Yard	50 metres (164 feet)
Minimum Rear Yard	50 metres (164 feet)
Maximum Lot Coverage	50 %
Maximum Height	11 metres (36.1 feet)

### **25C.3 OTHER REQUIREMENTS: CD-1 and CD-2 Zone Uses**

In any CD-3 Zone, no development permit will be issued for any:

- (a) C&D Materials Processing Facility except in conformity with the provision for such a use as contained within the CD-2 Zone; and
- (b) C&D Materials Transfer Station except in conformity with the provision for such a use as contained within the CD-1 Zone.

### **25C.4 OTHER REQUIREMENTS: C&D Materials Disposal Sites**

No development permit shall be issued for C&D disposal site except in compliance with the following provisions:

- (a) no portion of the operation shall be located within 60 metres (196.8 feet) of any side or rear property line abutting a residential or community facility use;
- (b) any building or structure used in conjunction with a disposal operation shall meet the following separation distances:
  - (i) from any property line 50 metres (164 feet)
  - (ii) from the nearest residential dwelling or institutional use 90 metres (295.3 feet)

(iii) from a watercourse

60 metres (196.8 feet)

**25C.5 GENERAL REQUIREMENTS: C&D Materials Operations**

No development permit shall be issued for a C&D Materials Operation except in compliance with the following provisions:

- (a) the operation complies with the general zone requirements as outlined in Section 25A.4.
- (b) Notwithstanding Sections 25C.2 to 25C.4, inclusive, more than one C&D Materials operation is permitted on a site and each use shall be subject to the applicable standards unless the uses are integrated then the more stringent requirements shall apply to the permitted uses.

**25C.6 GENERAL REQUIREMENTS: Site Plan Approval**

C&D Material Operations are subject to approval of a site plan. The Development Officer shall approve a site plan for each use which deals with those matters as outlined in Section 25A.5. (RC-Sep 10/02;E-Nov 9/02).

**PART 25D: ICH (INFRASTRUCTURE CHARGE HOLDING) ZONE**  
**(RC-Jul 2/02;E-Aug 17/02)**

**25D.1            ICH USES PERMITTED**

**No development permit shall be issued in any ICH Zone except on lots in existence on the date of adoption (July 2, 2002) of this zone for the following:**

**Single Unit Dwellings  
Open Space Uses**

**25D.2            ICH ZONE REQUIREMENTS**

**In any ICH Zone, no development permit shall be issued except in conformity with the requirements of the R-1 Zone.**

## PART 26: ADMINISTRATION

### 26.1 ENFORCEMENT

This By-law shall be administered by the Development Officer.

### 26.2 SCOPE OF APPLICATION

- (a) Every application for a development permit shall be accompanied by plans, in duplicate, drawn to an appropriate scale and showing:
  - (i) the true shape and dimensions of the lot to be used, and upon which it is proposed to erect any building or structure;
  - (ii) the proposed location, height and dimensions of the building, structure, or work in respect of which the application is being made;
  - (iii) the location of every building or structure already erected on or partly on the lot, and the location of every building upon contiguous lots;
  - (vi) the proposed location and dimensions of parking spaces, loading spaces, driveways, and landscaping areas; and
  - (v) other such information as may be necessary to determine whether or not every such building, or development, conforms with the requirements of this By-law.
- (b) Where the Development Officer is unable to determine whether the proposed development conforms to this By-law and other by-laws and regulations in force which affect the proposed development, he may require that the plans submitted under this section be based upon an actual survey by a Nova Scotia Land Surveyor.

### 26.3 SIGNATURE FOR APPLICATION

The application shall be signed by the registered owner of the lot or by the owner's agent, duly authorized in writing and shall set forth in detail the current and proposed use of the lot and each building or structure, or part of each building or structure, together with all information necessary to determine whether or not every such proposed use of land, building or structure conforms with the requirements of this By-law.

### 26.4 PENALTY

Any person who violates a provision of this By-law shall be subject to prosecution as provided for under the Planning Act.

### 26.5 DATE OF BY-LAW

This By-law shall take effect when approved by the Minister of Municipal Affairs.

### 27.6 SCHEDULE OF FEES

An application to amend this By-law or modify any of the provisions of this By-law must be accompanied by a fee at the time of making such application, which fees shall be:

Amendment to Land Use By-law	\$100.00
Development Agreement	\$100.00
Rezoning	\$100.00

## 22.7 PUBLIC HEARING NOTIFICATION

Where Council has scheduled a public hearing to consider an amendment to this By-law or a proposed development agreement or a proposed amendment to a development agreement, the following notification provisions shall apply:

- (a) all assessed property owners, based on LIMS records, located within two hundred and fifty (250) feet of the property boundary of the proposed site shall, where the site is located within a municipal Service Boundary, be notified by ordinary mail of the public hearing.
- (b) all assessed property owners, based on LIMS records, within five hundred (500) feet of the property boundary of the proposed site shall, where the site is not located within a municipal Service Boundary, be notified by ordinary mail of the public hearing.
- (c) the notice required by clauses (a) and (b) shall be posted at least ten (10) days prior to the date of the public hearing.

## APPENDIX "A"

-i-

### NON-CONFORMING USE

- 90 (1) Subject to this Act, a non-conforming structure or a non-conforming use of land or a structure, existing at the date of the first publication of this notice of intention to adopt a land use by-law or amend or revise a land use by-law, may continue to exist.

### EXISTING USE

- (2) For the purposes of sub-section (1), a non-conforming structure or a non-conforming use of land or a structure shall be deemed to be existing if
- (a) the non-conforming structure, or structure containing the non-conforming use, was lawfully under construction; or
  - (b) the permit for its construction or use was in force and effect, except that this clause shall not apply unless the construction or use is commenced within twelve months after the date of issuance of the permit and is completed in conformity with the permit within a reasonable time.

### CANCELLATION OF PERMIT

- 91 (1) A council may cancel any permit issued by the Municipality in the circumstances of clause (b) of sub-section (2) of Section 90, where the construction or use has not been commenced, and shall pay to the person on whose behalf the permit was obtained such reasonable expenses for the preparation of plans and promotion of the development as may be agreed upon by the parties.

### ARBITRATION

- (2) In the event the parties are unable to agree upon the amount to be paid, the person on whose behalf the permit was obtained may, by written notice, require that the municipality submit the claim to arbitration.

### ARBITRATOR

- (3) The arbitration shall be by one arbitrator appointed by the parties, or appointed by the Minister if they are unable to agree.

### RESTRICTION ON NON-CONFORMING USE

- 92 (1) No increase in volume of or any addition to a structure shall, except as required by an enactment, be made while a non-conforming use therein is continued, but such use may be extended throughout the structure.

## APPENDIX "A"

-ii-

### CHANGE IN USE

- (2) A non-conforming use shall not be changed to any other use unless the use is permitted for that property by the land use by-law.

### CHANGE OF OCCUPANT

- (3) A change of tenant, occupant or owner of any land or structure shall not of itself be deemed to affect the use of the land or structure for the purposes of this Section.

### REPAIR OR MAINTENANCE

- (4) Subject to Section 93, this Act does not preclude the repair or maintenance of a structure.

### DESTRUCTION OR DAMAGE

- 93 (1) If a non-conforming structure or a structure containing a non-conforming use is destroyed or damaged by fire or other wise
  - (a) to an extent of less than seventy-five per cent of the market value of the structure, it may be rebuilt, repaired or reoccupied if the structure is substantially the same as it was before the destruction or damage and it is used for the same non-conforming use; or
  - (b) to an extent of seventy-five per cent or more of the market value of the structure, it shall not be rebuilt, repaired or reoccupied except in conformity with the requirements of the land use by-law applicable to the property.

### DISCONTINUANCE

- (2) A non-conforming use of land or a structure shall not be recommenced if it has been discontinued for a continuous period of six months, and in such event the land or structure shall not thereafter be used except in conformity with the requirements of the land use by-law applicable to the property.

## APPENDIX "B"

### EXISTING BUSINESSES - NO EXPANSION

Notwithstanding anything else in this By-law, the following industrial uses of land shall be permitted uses to the extent to which they are in existence on the effective date of this By-law.

<u>Existing Use</u>	<u>Address</u>	<u>LIMS Number</u>
Pelrine (B & M Trucking): trucking operation and storage of topsoil and gravel behind existing building	Williamswood (R-2)	40072621
Comeau Salvage Edwards Well Drilling: Well drilling equipment repair conducted and wholly contained within existing garage	Harrietsfield (V-1) Herring Cove (R-2)	40394694 40079410
Ricks Fine Foods: food packaging & C-2) distribution outlet utilizing 2500 square feet of a warehouse constructed under Building Permit No. 13802	751 Herring Cove Road	40074593



## APPENDIX "C"

### EXISTING BUSINESSES - EXPANSION

The following uses shall be permitted in the zones mentioned below and allowed to expand subject to the requirements of Part 17.

#### R-6 (RURAL RESIDENTIAL) ZONE

<u>Existing Use</u>	<u>Address</u>	<u>LIMS Number</u>
David Baker General Contracting	Village Road	40000119 40075681 40000127
Jim Marriot Trucking	Glenn Baker Drive	40074221
Aquarius Building L Marine boat fabrication & repair	Ketch Harbour Road	422311
Hennebury's Auto Repair	Ketch Harbour	4059768
Ryan's Auto Repair	Ketch Harbour Road	389486
Gray's Boat Yard	Sambro Head	394825 394833
Brown's Demolition Contracting and Repair	Whitehead Road	40073132
Doug Iron's Trucking	Whitehead Road	40073272
J and V Excavating	Whitehead Road	40073132
<b>Keddy's Horse Stables and Farm (WRCC-Feb 21/96;E-Mar 17/96)</b>	<b>Brunt Road</b>	<b>585091</b> <b>40073066; 40073082</b> 40073074
Parsons Bros., Industrial Marine Sales and Service	Ketch Harbour	391292
LeBlanc's Marine Diesel Repair Business	1613 Ketch Harbour Road	395988 Portion of LIMS # 395681 within lot depth 200 ft. and lot width 85 ft.

#### R-2 (TWO UNIT DWELLING) ZONE

<u>Existing Use</u>	<u>Address</u>	<u>LIMS Number</u>
<b>Isner Stables, Trail Rides and Farm (WRCC-Jun 25/07;E-Jul 14/07)</b>	<b>Harrietsfield</b>	<b>40074064</b>

## C-2 (GENERAL BUSINESS) ZONE

<u>Existing Use</u>	<u>Address</u>	<u>LIMS Number</u>
Fisherman's Club	Herring Cove Road	40074213
Fin's Motor Sport	Herring Cove Road	40074296
Braum Mobility Products	Herring Cove Road	40074965
Poole's Auto Salvage	Ketch Harbour Road	40000101
		40077968
Poole Construction	Ketch Harbour Road	40077968
Marryatt's Auto Body	Ketch Harbour	40059594
<del>Silver Seas Social Club</del>	<del>Ketch Harbour Road</del>	<del>395996</del>
(WRCC-April 28, 2008; E-October 23, 2008)		
Steve Murphy Ultramar Station	Ketch Harbour	622597

## V-1 (HARRIETSFIELD VILLAGE CENTRE) ZONE

<u>Existing Use</u>	<u>Address</u>	<u>LIMS Number</u>
Leo Comeau's Auto Body Shop and Quality Used Cars	1080 Old Sambro Road	40394694
Royal Flush	Old Sambro Road	480178
<b>Isner Stables, Trail Rides and Farm (WRCC-Jun 25/07;E-Jul 14/07)</b>	<b>1060 Old Sambro Road</b>	<b>00388504; 00388496</b>

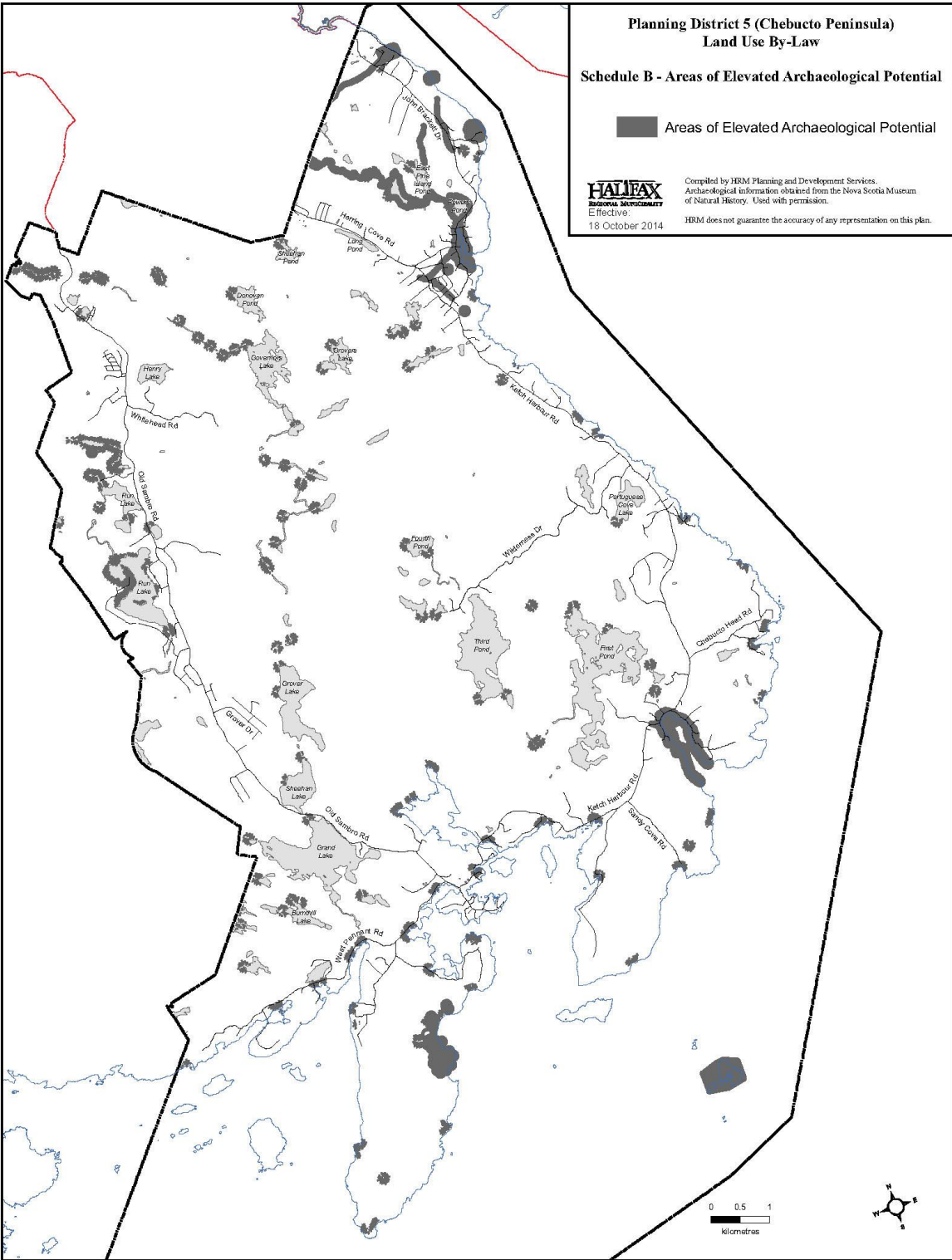
## V-2 (HERRING COVE VILLAGE CENTRE) ZONE

<u>Existing Use</u>	<u>Address</u>	<u>LIMS Number</u>
Floyd's Store	Hebridean Drive	40077190
Jack Smart Industrial Main- tenance Machine Shop	Village Road	40076895

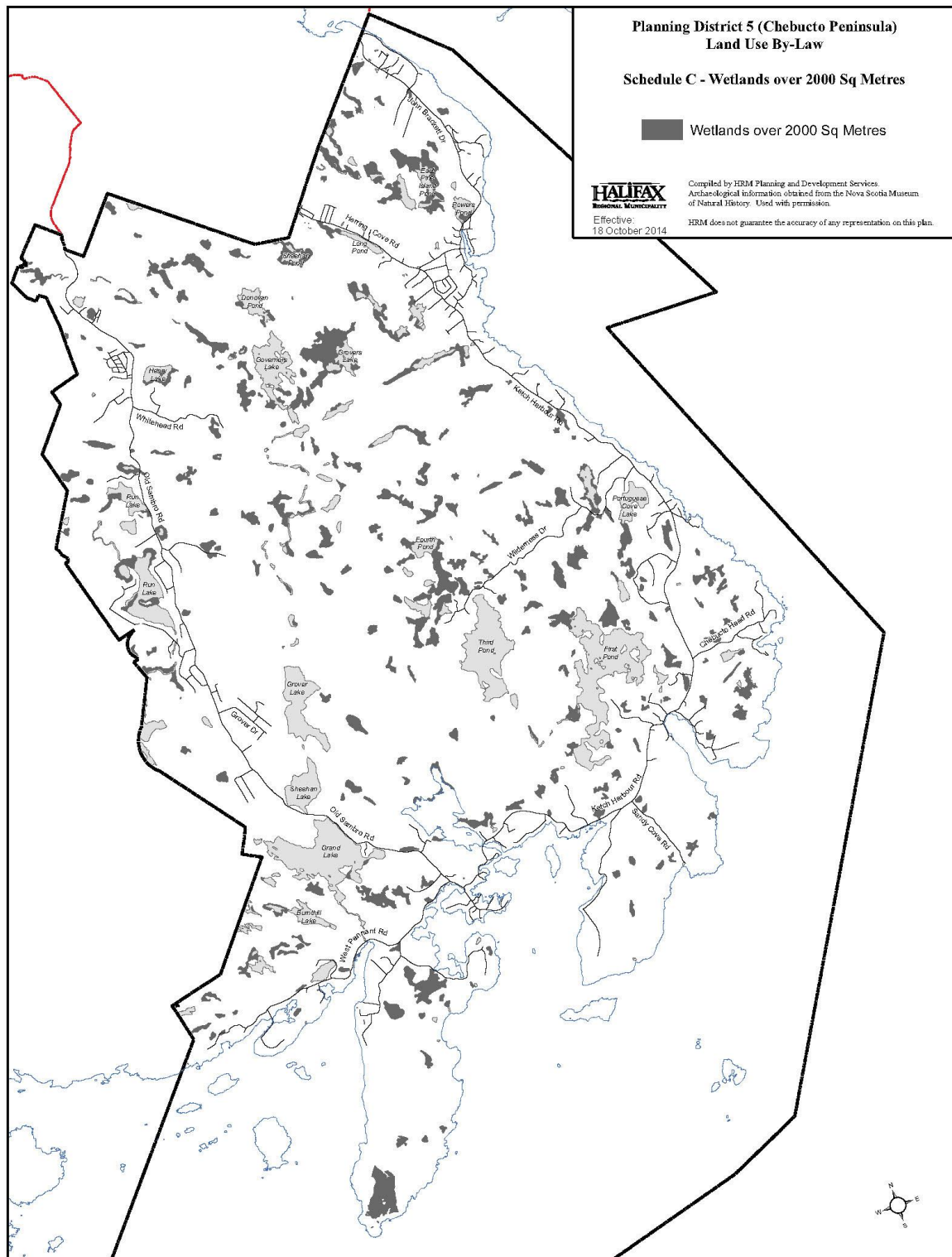
## V-3 (KETCH HARBOUR VILLAGE CENTRE) ZONE

<u>Existing Use</u>	<u>Address</u>	<u>LIMS Number</u>
Flemming's Storage Yard	Ketch Harbour	391284
Gray's Auto Body Shop	Ketch Harbour	391987

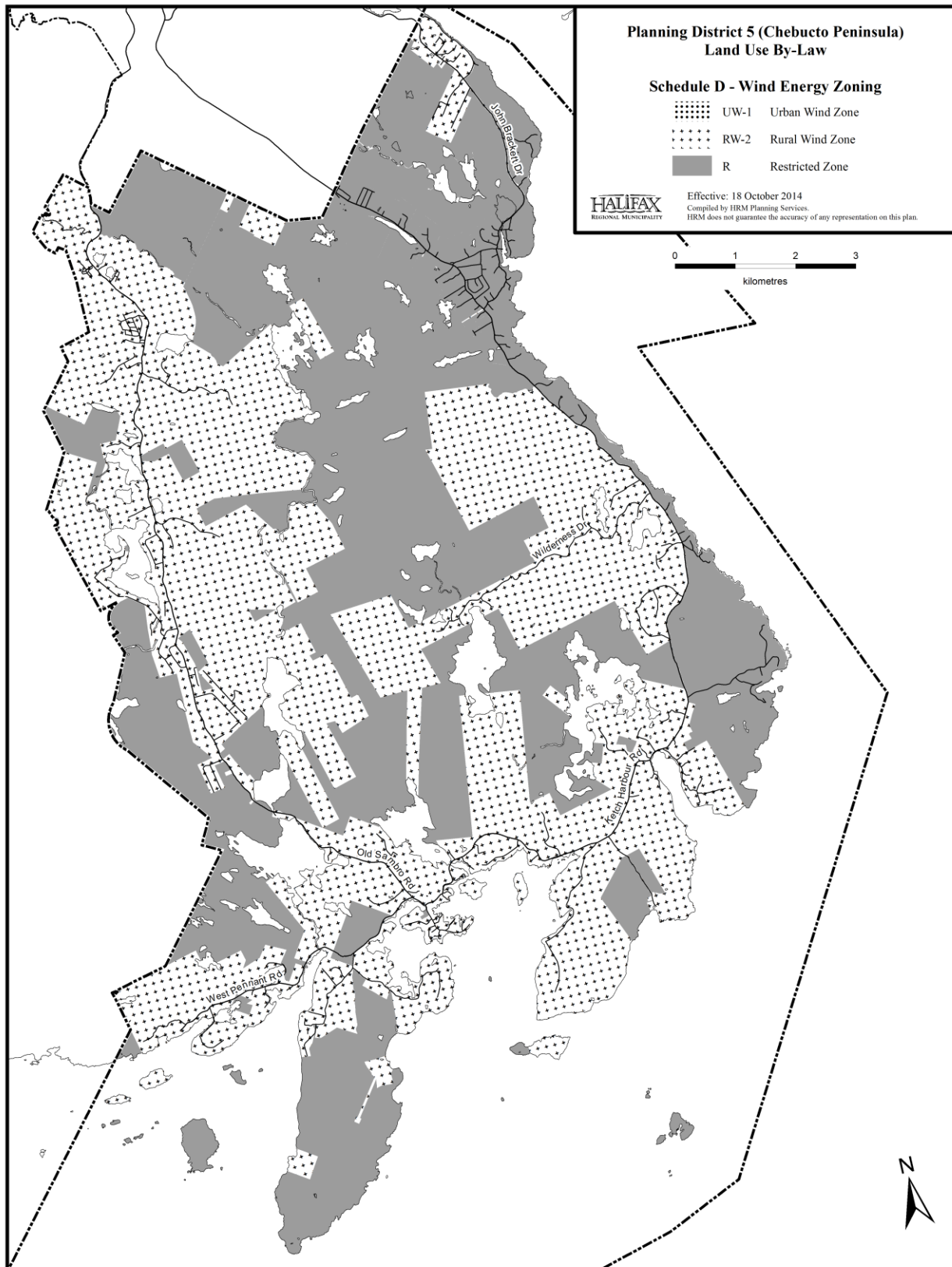
**Schedule B – Areas of Elevated Archaeological Potential (RC-Jun 25/14;E-Oct 18/14)**



## Schedule C – Wetlands over 2,000 Sq Metres (RC-Jun 25/14;E-Oct 18/14)



## Schedule D – Wind Energy Zoning (RC-Jun 25/14;E-Oct 18/14)





Schedule E - Areas Subject to Reduced Road Frontage Requirements (RC-Jan 10/17;E-Feb 25/17)



T:\

#### Schedule F - Shared Private Driveway Design Standards

Where specifically required by LUB provisions, shared private driveways that provide vehicular access to four or more dwellings shall meet the following design standards.

1. All shared private driveways shall have a minimum clear width of 6 meters (19.7 feet) as follows:
  - (a) Travel lanes shall be a minimum of 3 meters (9.84 feet) for each direction of travel and shall not include parking areas. Travel lanes shall be designed and constructed, complete with gravel or a paved asphalt surface, to adequately support the loads produced by all emergency vehicles.
2. All shared private driveways shall be constructed so as to prevent the accumulation of water and ice on any section of the driveway. Where the driveway grades are less than 0.5 percent, the shared private driveway shall be crowned in the center to prevent pooling of water in a travelled way. Swales shall be installed if required to prevent erosion of the shoulders.
3. Provisions for drainage systems, snow banks, utilities, and the like shall be provided and shall not be located within the required 6 meter (19.7 foot) driveway.
4. At least 4.26 meters (14 feet) nominal vertical clearance shall be provided and maintained over the full width of the shared private driveway.
5. Shared private driveways shall not have grades greater than 10 % with no change in grade over 8% in 15 meters (49.21 feet) of travel distance.
6. All cul-de-sacs shall be constructed with a minimum radius of 13 meters (42.65 feet) to the edge of asphalt and 15 meters (49.21 feet) to outside of shoulder.
7. All travel lane curves and turns at intersection, are to have a minimum 12 meter (39.37 feet) centreline travel radius. Curves and turns shall not reduce the clear width of the driveway.
8. The angle of approach and the angle of departure shall not exceed 8 degrees at any point on the driveway or its intersection with another driveway.
9. Sight distance shall be incorporated into the design of intersections.
10. If speed bumps are going to be constructed; acceptable warning signs shall be required.

**LAND USE BY-LAW AMENDMENTS  
IN CHRONOLOGICAL ORDER OF MINISTERIAL APPROVAL**

<u>Amend Number</u>	<u>Policies/Maps</u>	<u>Subject</u>	<u>Council Adoption</u>	<u>Effective Date</u>
1.	Part 2: Definitions 2.1, 2.2 (amended);	Accessory Buildings (Case ZA-ALL-21-94)	June 26/95	July 22/95
2.	Part 4: 4.12 (amended); Existing Businesses (addition)	General Provisions (Case PD5-27-95)	February 21/96	Mar17/96
3.	Part 2: Definitions 2.11A (addition); Part 18: 18.1 (addition)	Composting Operation (Case ZA-ALL-31-95)	February 26/96	Mar 28/96
4.	Part 16: 16.1 (addition)	Commercial Uses (Case 7549)	October 6/97	Nov 4/97
1.	Subsection 6 of Section 3 (amended); Clause (c), Subsection 7 (replaced); Section 4, Subsection 4.20 A, 4.27A (added); Subsection 11 (amended); Subsection 11.1, Section 11 (amended); Subsection 11.2 Section 11 and Subsection 19.2, Section 19 (amended); Section 11, Subsection 11.4A (added); Section 11 (amended); Section 13 (deleted); Zoning Maps (Schedules A-2,A-3,B-2,B-3,C-2, C-3,D-1 to D-3 and E-2) (amended)	Chebucto Peninsula (Case 00098)	February 13/01	May 5/01
2.	Part 2: 2.8 (amended); Part 2: 2.66A (addition); Part 4: Subsection 4.13A (addition)	Definitions (Case 00478) General Provisions	June 24/02	July 14/02
3.	Section 3.1 (Zones) addition; Part 25D addition	Zones (Case 00423)	July 2/02	Aug 17/02
4.	Schedule A: (amended); Schedule B: (amended)	Construction & Demolition (Case 00082)	October 8/02	October 8/02
5.	Part 2: 2.11B - 2.11 E (addition); Part 2: 2.31A, 2.70A (addition); Part 2: 2.55 & 2.62 (replaced); Part 3.1 (amended); Part 4: 4.20 (replaced); Part 25A, 25B 25C (addition); Part 15 (addition); Schedule A & Schedule B (amended)	Construction & Demolition (Case 00082)	September 10/02	Nov 9/02
6.	Part 4: 4.1A (addition)	Interim Growth (Case 00664)	April 13/04	Apr 22/04
7.	Part 4: 4.30 (addition)	Tourist Accommodations (Case 00616)	June 7/04	June 27/04
8.	Part 4: 4.13(a)(ii) addition; Part 4: 4.13(a)(v) replaced; Part 4: 4.13(a)(viii) addition	Accessory Buildings (Case 00694)	Sept 27/04	Oct 17/04
9.	Adding RPK & PA Zone; Deleting CDD Zone & replacing it with UR Zone; Adding Schedules A-C; Consideration of DA for lands designated Rural commuter; new Watercourse Setback & buffer & Coastal Area requirements; new requirements for Bicycle Parking	Regional Plan	June 27/06	Aug 26/06
14.	Temporary signage amendments	Project 00327	Sept 26/06	Nov 18/06
15.	Adding Isner Stables to Appendix C	01012	June 25/07	July 14/07
16.	Amended Section 4.20	01070	October 22/07	Oct 27/07



17.	Added Section 4.7A	01138	April 28/08	May 19/08
18.	Amending Section 4.27 (Parking requirements) By deleting and replacing	01119	Aug 5/08	Aug 23/08
19.	Amending Appendix C to delete reference to Silver Seas Social club	01129	April 28/08	Oct 23/08
20.	Amending Section 4.15 (Temporary Construction uses permitted.)	01058	Jan. 20/09	Feb. 7/09
21.	Amending Section 2.15 (Re: Child Care Facility)	01074	March 3/09	March 21/09
22.	Adding Part 8A: R-2b (Residential Equine) Zone	01175	March 2/10	Apr 17/10
23.	Amending the Zoning Map for Planning District 5 to rezone PID #40071177, 00648493 and 00648501 from PA to R-2	15910	Feb. 28/11	Feb. 28/11
24.	Amend the Zoning Map to rezone 651 Ketch Harbour Road from P-2 to R-1	16445	Feb. 28/11	Mar 19/11
25.	Deleted the word “windmills” in Section 4.19; Added <b>Section 4.33 Wind Energy Facilities</b> in Part 4: General Provisions for All Zones; Add Schedule D – Wind Energy Zoning Map	00953	Aug 16/11	Oct 29/11
26.	Amend Part 4, Section 34 IV by adding <b>b)</b> and <b>c)</b> after a): Wind Energy Facilities.	00953	Oct 18/11	Oct 29/11
27.	Amend the Zoning Map to rezone 114 Hebridean Drive, Herring Cove, from P2 to F-1	17599	July 22/13	Aug 10/13
28.	Amend the Zoning Map to rezone 4 York Redoubt Crescent, Fergusons Cove, from P-2 to R-2a	18216	Aug 7/13	Aug 24/13
29.	<b>Repeal/Readopt</b> Section 2.11AA., 2.54, 2.71, parts of 3.1, 3.6, 4.1B, 4.20, 4.20A, 4.28A; 4.28B, 4.28C, 4.31, 4.32, 4.33; Part 21A; Part 22A; Part 25; Schedule B, Schedule C, Schedule D; <b>Amend</b> Section 3.1, 3.6; 4.7, 4.20, 4.20A; Part 9; Part 11; Part 19; Schedule A; <b>Add</b> Section 2.8A, 2.70B; Section 4.34	RP+5	Jun 25/14	Oct 18/14
30.	<b>Amend</b> Schedule A to rezone 786 and 792 Old Sambro Road, Harrietsfield from R-2 to C-5 Zone	Case 20072	Feb 16/16	Mar 26/16
31.	<b>Add</b> Section 4.7(d), (e) – Reduced Road Frontage; <b>Add</b> Schedule E - Areas Subject to Reduced Road Frontage Requirements and Schedule F - Shared Private Driveway Design Standards	25 Acre Lots	Jan 10/17	Feb 25/17