

TRANSIT PRIORITY MEASURES

What are Transit Priority Measures?

Transit Priority Measures (TPMs) are techniques that are used to reduce delays for buses on congested roads. They can include a wide variety of treatments, ranging from modification of signage and traffic signal phasing to the addition of dedicated bus lanes. TPMs prioritize the movement of buses over other vehicles in the transportation network, making public transit service more efficient and reliable for users and providing an incentive to take the bus rather than drive.



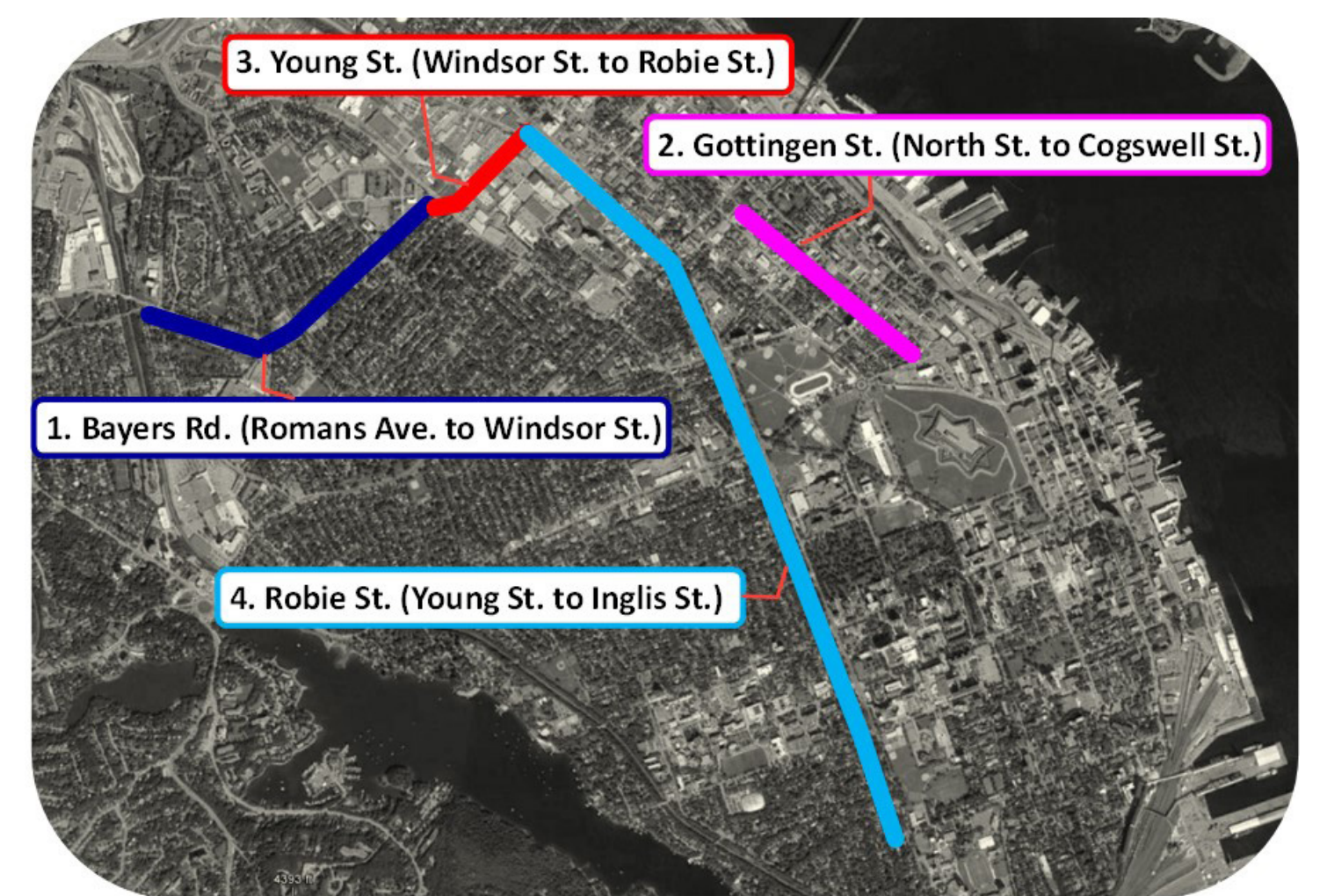
Why Bayers Road?

Bayers Road is a key east-west route that connects Highway 102 and the west end to the central peninsula. During weekday morning and afternoon peak periods, traffic congestion on Bayers Road is very common. This can significantly impact the reliability of bus service.



The Bigger Picture

Bayers Road is an important component of a proposed transit priority corridor that would extend east on Young Street and south into downtown Halifax on Robie Street. Staff are currently investigating the potential for TPMs on Bayers Road in addition to other portions of the overall corridor, including:



- | | | |
|---------------------|---|---|
| 1. Bayers Road | } | Identified as critical locations for transit priority in Halifax Transit's Moving Forward Together Plan |
| 2. Gottingen Street | | |
| 3. Young Street | } | Expected to be recommended in HRM's forthcoming Integrated Mobility Plan. |
| 4. Robie Street | | |

These TPM corridors have the potential to improve transit service significantly on the peninsula. Though any single TPM may only result in a few seconds of time savings, when TPMs are installed along a corridor, the benefits can add up considerably, reducing overall delay and improving service reliability.

What is being proposed on Bayers Road?

At this point, nothing is being proposed. Bayers Road is being investigated for its potential to incorporate TPMs. A **functional design** study is being completed that will identify a variety of options. The study will help Staff better understand the available options in terms of their ability to improve transit service, as well as the associated trade-offs that may be required including property impacts and the resulting impacts to the movement of other road users including pedestrians, people on bicycles, and motor vehicle traffic.

Functional design is a preliminary level of design that is completed to identify and review how potential alternatives could work. It helps to determine a preferred alternative that may be carried forward to detailed design, which is necessary before a project can be implemented.

How can you participate?

Your input is an important part of the design process. We invite you to review the options being considered and provide feedback. Tell us about your experiences in the area, and how the design concepts impact you. Let us know if you have any ideas or concerns. Your feedback will be very important during the next stages of the project.

Next Steps

1. Finalize functional design concepts (Oct. 2017)
2. Bring forward to Council for approval (Dec. 2017)
3. Issue detailed design work (Spring 2018)*
4. Implement (TBD)*
(*pending Council approval)