

**Client**  
 BANC Group of Companies  
 1 Craigmore Drive, Suite 201  
 Halifax, NS  
 B3N 0C6

**Project**  
 WELLINGTON APARTMENTS  
 1110 Wellington Avenue, Halifax, NS

**Consultants**  
 Lydon Lynch Architects Limited  
 Architects

1559 Barrington Street, Suite 401  
 Halifax, Nova Scotia B3J 2K2  
 Tel: (902) 422-1446  
 Fax: (902) 422-1449

**Design Point**  
 Civil Engineer  
 200 Waterfront Park, Suite 100  
 Halifax, Nova Scotia B4L 5Y1  
 Tel: (902) 414-8181  
 eml: glenn.woodford@designpoint.ca

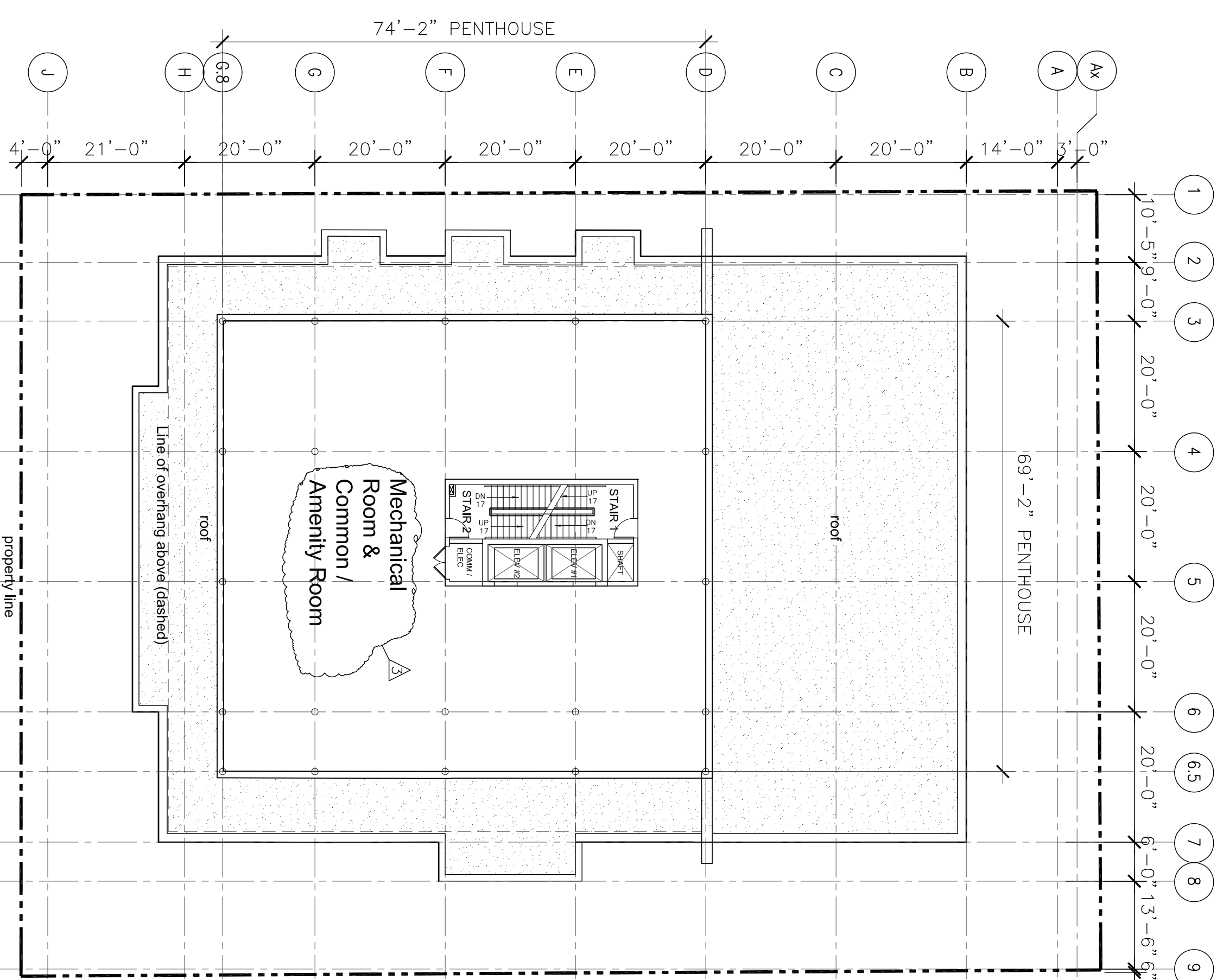
**NOTES**  
 DO NOT SCALE THIS DRAWING FOR CONSTRUCTION  
 DIMENSIONS ARE TO FACE UNLESS OTHERWISE NOTED  
 THESE DIMENSIONS ARE TO BE USED IN CONSULTATION WITH  
 THE ARCHITECT AND CONTRACTOR. ALL DIMENSIONS WITHIN  
 THIS DRAWING ARE TO BE EXPERTLY TO THE  
 SITE. ALL DIMENSIONS AND CONDITIONS ARE TO BE VERIFIED ON  
 THESE DRAWINGS ARE TO BE USED FOR THIS PROJECT ONLY  
 AND SHALL NOT BE USED FOR ANY OTHER PURPOSE  
 WITHOUT THE WRITTEN CONSENT OF THE ARCHITECT

No.	Date	Issued
3	2018/05/30	REV'D FOR P.A.C. CLARIFICATION
2	2018/03/21	REVISED PLAN AMMENDMENT
1	2016/08/18	FOR PLAN AMMENDMENT

TYPICAL FLOOR PLANS 4 - 8 &  
 PENTHOUSE PLAN

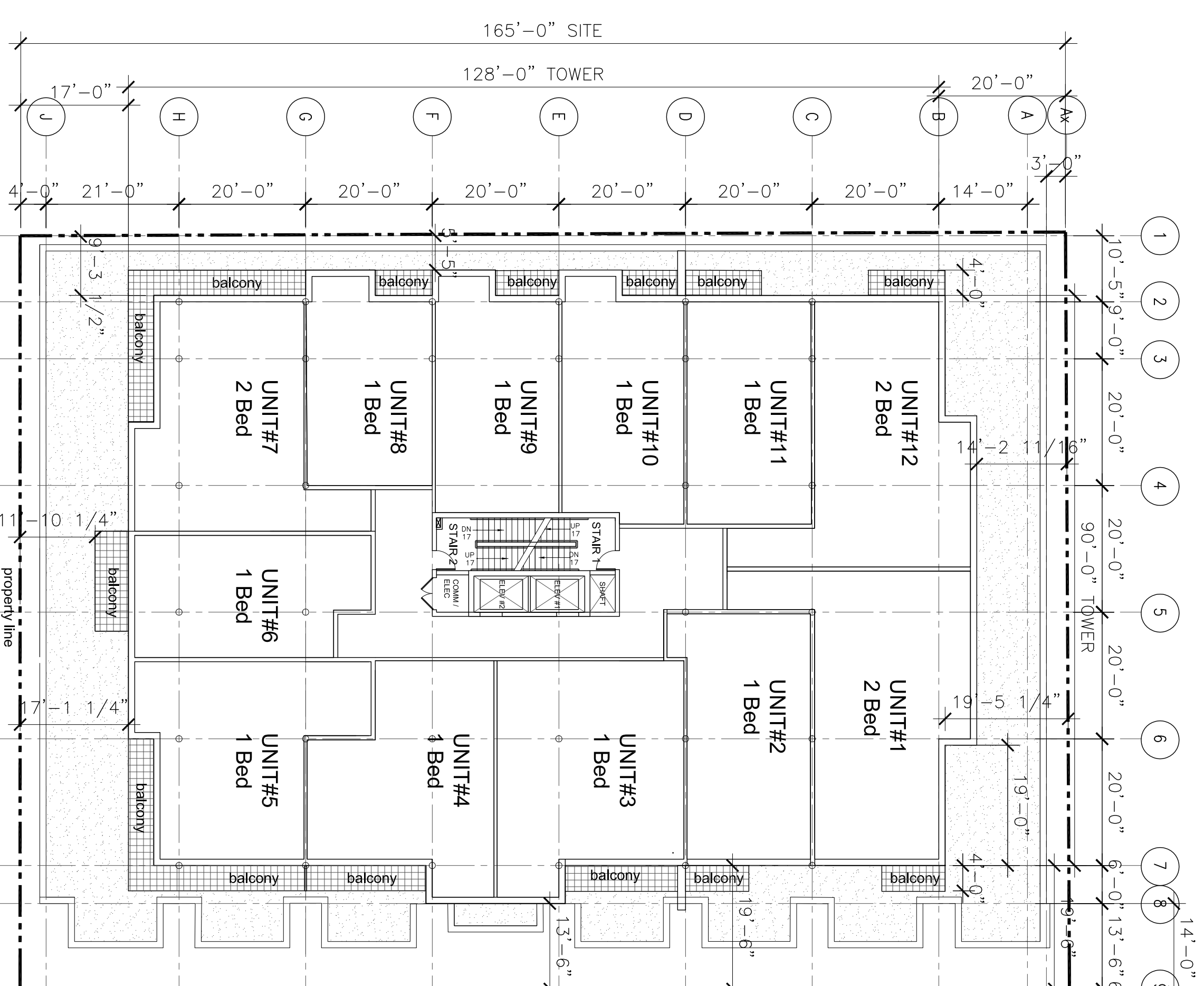
Drawing Scale: 1/16" = 1'-0"  
 Project No.: 16008  
 Drawn By: LLA  
 Checked By: LLA

**A-104**



REVISION NOTE:  
 ROOM NAME  
 CLARIFIED

**1** LEVEL 9 MECH PENTHOUSE PLAN  
 1/16" = 1'-0"

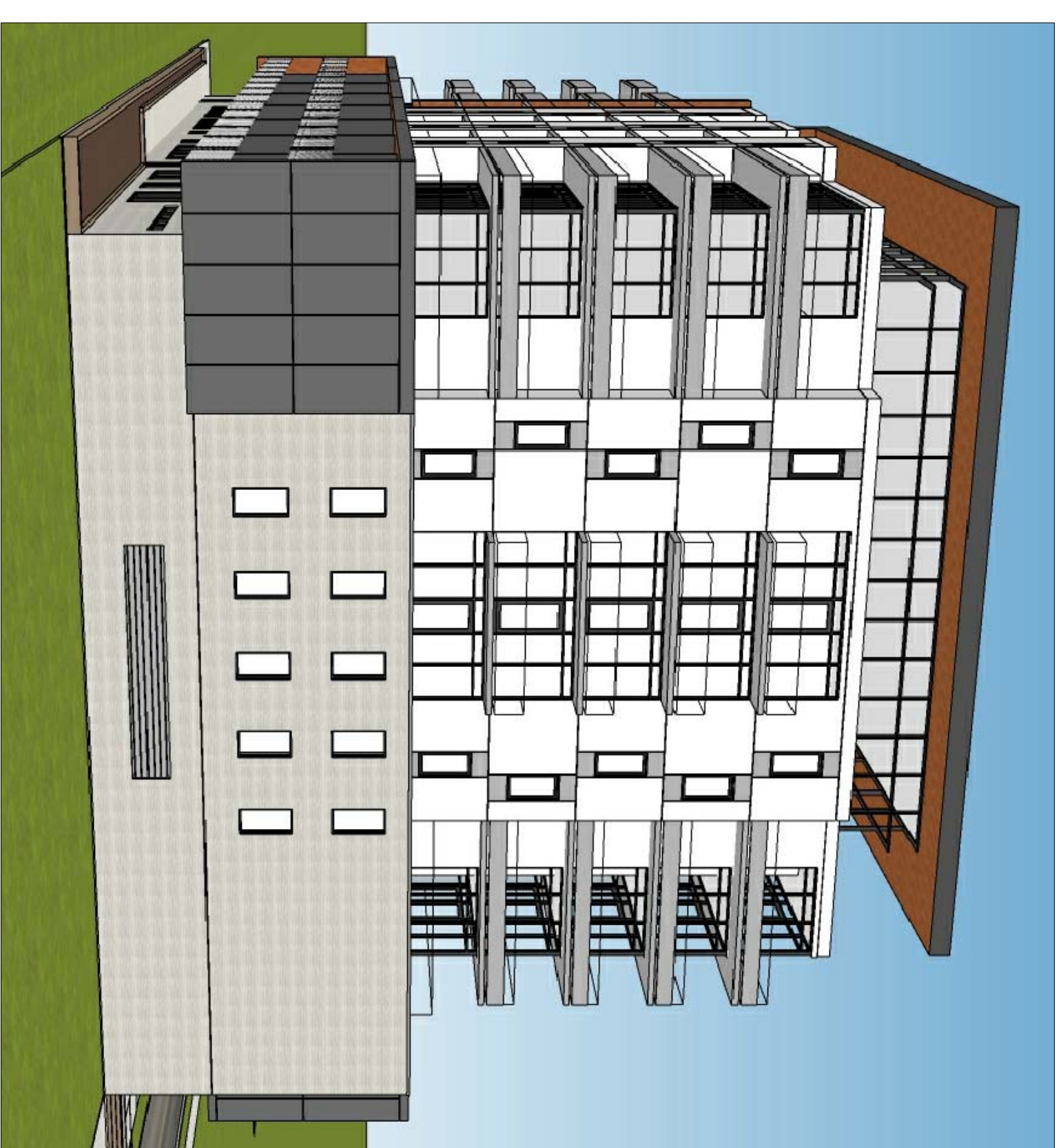


**2** TYPICAL FLOOR PLAN (LEVELS 4 TO 8)  
 1/16" = 1'-0" NOTE: BALCONY LOCATIONS VARY, REFER TO ELEVATIONS

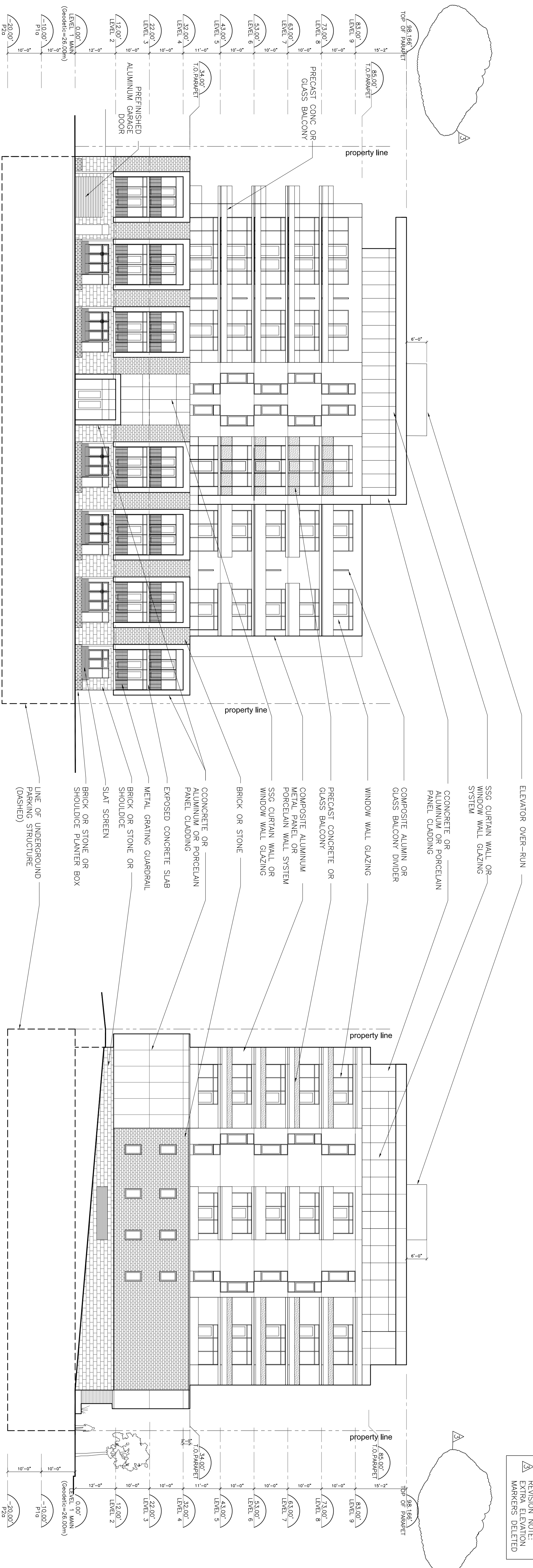




**1** MODEL VIEW - EAST ELEVATION  
 NTS



**2** MODEL VIEW - SOUTH ELEVATION  
 NTS



**3** WELLINGTON STREET (EAST) ELEVATION  
 1/16" = 1'-0"

**4** SOUTH ELEVATION  
 1/16" = 1'-0"

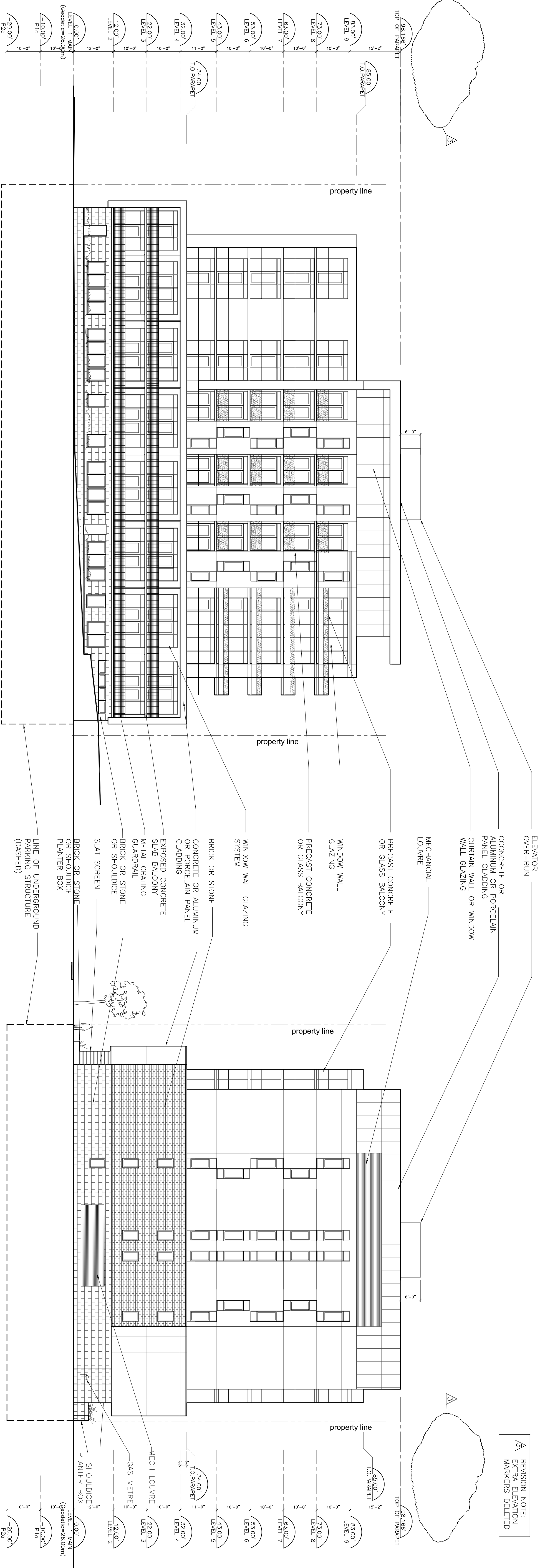




**1** MODEL VIEW - WEST (PARK) ELEVATION  
 NTS



**2** MODEL VIEW - NORTH ELEVATION  
 NTS



**3** WEST (PARK) ELEVATION  
 1/16" = 1'-0"

**4** NORTH ELEVATION  
 1/16" = 1'-0"

**NOTES**  
 DO NOT SCALE THIS DRAWING FOR CONSTRUCTION  
 DIMENSIONS ARE TO FACE UNLESS OTHERWISE NOTED  
 THESE DRAWINGS ARE TO BE USED IN CONJUNCTION WITH ALL DIMENSIONS AND CONDITIONS ARE TO BE VERIFIED ON SITE. ALL DIMENSIONS ARE TO BE REPORTED TO THE ARCHITECT.  
 THESE DRAWINGS ARE TO BE USED FOR THE PROJECT ONLY AND SHALL NOT BE USED FOR ANY OTHER PURPOSE WITHOUT THE WRITTEN CONSENT OF THE ARCHITECT.

No.	Date	Issued
3	2018/05/30	REV'D FOR P.M.C. CLARIFICATION
2	2018/03/21	REVISED PLAN AMMENDMENT
1	2018/08/18	FOR PLAN AMMENDMENT

**WEST & NORTH ELEVATIONS**

Drawing Scale: AS SHOWN  
 Project No.: 16008  
 Drawn By: LIA  
 Checked By: LIA

**A-201**

**LYDON LYNCH**

**Client**  
 BANC Group of Companies  
 1 Craigmore Drive, Suite 201  
 Halifax, NS  
 B3N 0C6

**Project**  
 WELLINGTON APARTMENTS  
 1110 Wellington Avenue, Halifax, NS

**Consultants**  
 Lydon Lynch Architects Limited

**Architects**  
 1559 Barrington Street, Suite 401  
 Halifax, Nova Scotia B3J 2K2  
 Tel: (902) 422-1446  
 Fax: (902) 422-1449

**Design Point**  
 Civil Engineer  
 200 Waterfront Park, Suite 100  
 Halifax, Nova Scotia B4J 1Y1  
 Tel: (902) 414-8181  
 em: glenn.woodford@designpoint.ca