

LEGEND:

PLACED SURVEY MARKER	⊙
FOUND SURVEY MARKER	⊙ Fd.
IRON TUBE	○ I.T.
IRON BAR	○ I.B.
PARKER-KALON MASONRY NAIL	⊙ "P-K" NAIL
ROCK POST	⊙ R.P.
NOVA SCOTIA HIGH PRECISION NETWORK MONUMENT	⊙ N.S.H.P.N.
NOVA SCOTIA ACTIVE CONTROL STATION	⊙ N.S.A.C.S.
NOVA SCOTIA COORDINATE MONUMENT	⊙ N.S.C.M.
PLACED	PL
FOUND	Fd.
WITNESS	WT.
RADIUS ; ARC ; CHORD	R ; A ; C
POINT OF CURVATURE	P.C.
POINT OF COMPOUND CURVATURE	P.C.C.
POINT OF REVERSE CURVATURE	P.R.C.
CALCULATED ; MEASURED ; SET	(C) ; (M) ; (S)
PLAN OF PREVIOUS SURVEY ; DEED	(P) ; (D)
LANDS DEALT WITH BY THIS PLAN	
LAND REGISTRATION OFFICE	L.R.O.
PROPERTY IDENTIFICATION NUMBER	PID
SQUARE METRES	SQ.M.

NOTES:

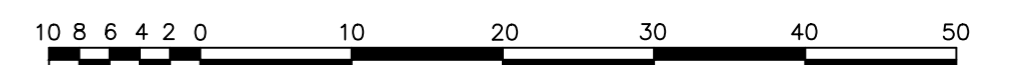
LOT A TO BE SUBDIVIDED TO FORM LOT A1 AND LOT A2.
 PRELIMINARY APPROVAL IS REQUESTED FOR LOT A1 AND LOT A2.



WSP Canada Inc.
 1 Spectacle Lake Drive
 Dartmouth, Nova Scotia
 Canada, B3B 1X7
 T 902-835-9955
 F 902-835-1645
 www.wsp.com

PRELIMINARY PLAN

Plan of Survey of LOT A1 and LOT A2
 being a Subdivision of LOT A
 Lands Conveyed to
KEIZER'S PROPERTIES LIMITED
 SACKVILLE DRIVE (HIGHWAY NO. 1)
 MIDDLE SACKVILLE
 COUNTY OF HALIFAX
 PROVINCE OF NOVA SCOTIA



SCALE : 1/500 (METRIC)
 FEBRUARY 25, 2020

REF. NO. 191-06248

DWG. NO. 191-06248-600