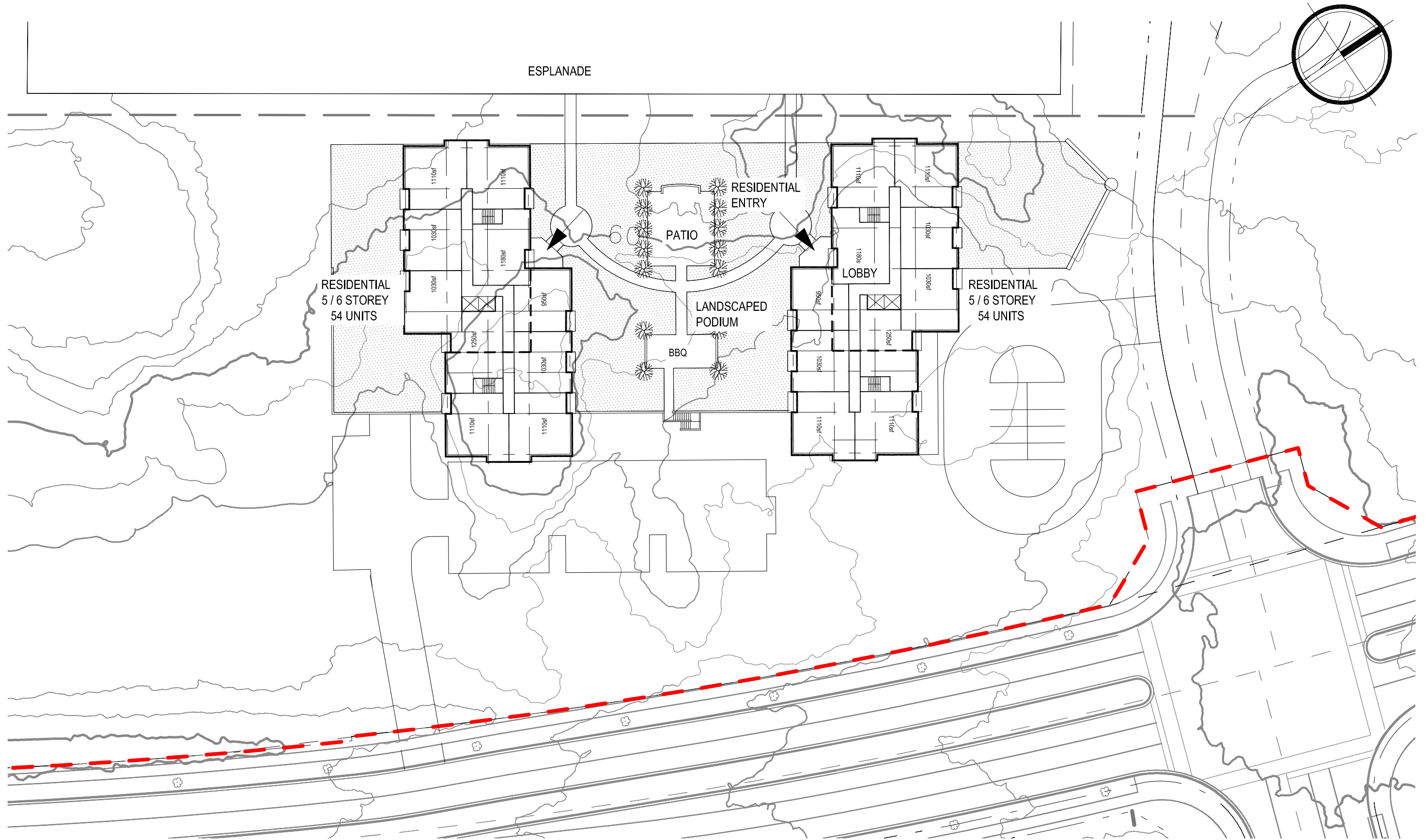


dan / May 10, 2016, 15:46 / F:\Projects\2016\1601 - Dartmouth Crossing L\1\DWG\ACAD-1601_Concept_Plans_May2_2016.dwg



RESIDENTIAL DEVELOPMENT

DARTMOUTH CROSSING LTD.

GROUND FLOOR PLAN

SCHEMATIC



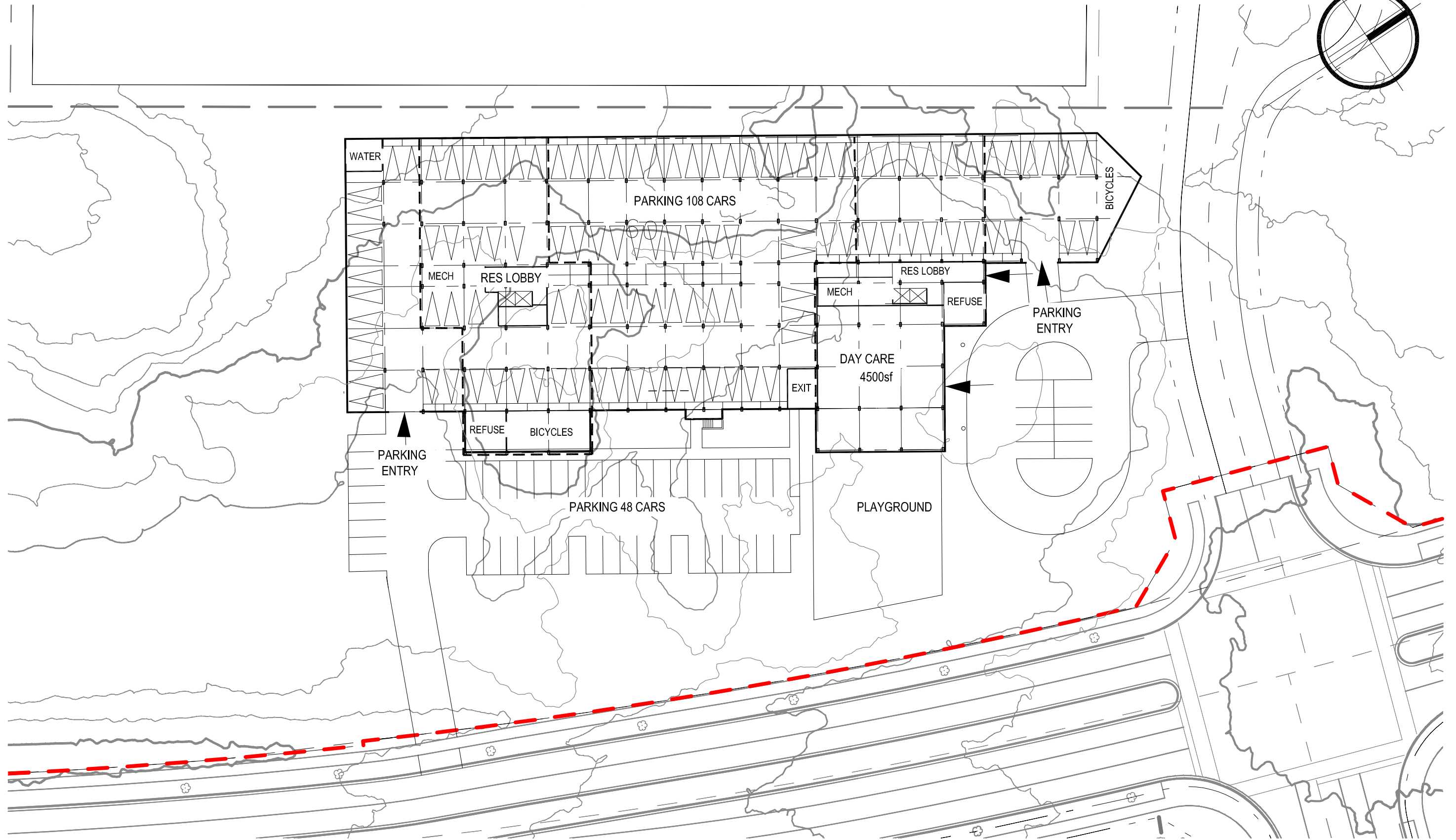
Kassner Goodspeed Architects Ltd.

5663 Cornwallis Street, Suite 200 Halifax, NS B3K 1B6

tel 902 422 1557 | fax 902 422 8685 | www.kgarch.ns.ca

1" = 50'-0"
May 10, 2016

dan / May 10, 2016, 15:45 / F:\Projects\2016\1601 - Dartmouth Crossing L\1\DWG\ACAD-1601_Concept_Plans_May2_2016.dwg



RESIDENTIAL DEVELOPMENT

DARTMOUTH CROSSING LTD.

LOWER FLOOR PLAN

SCHEMATIC

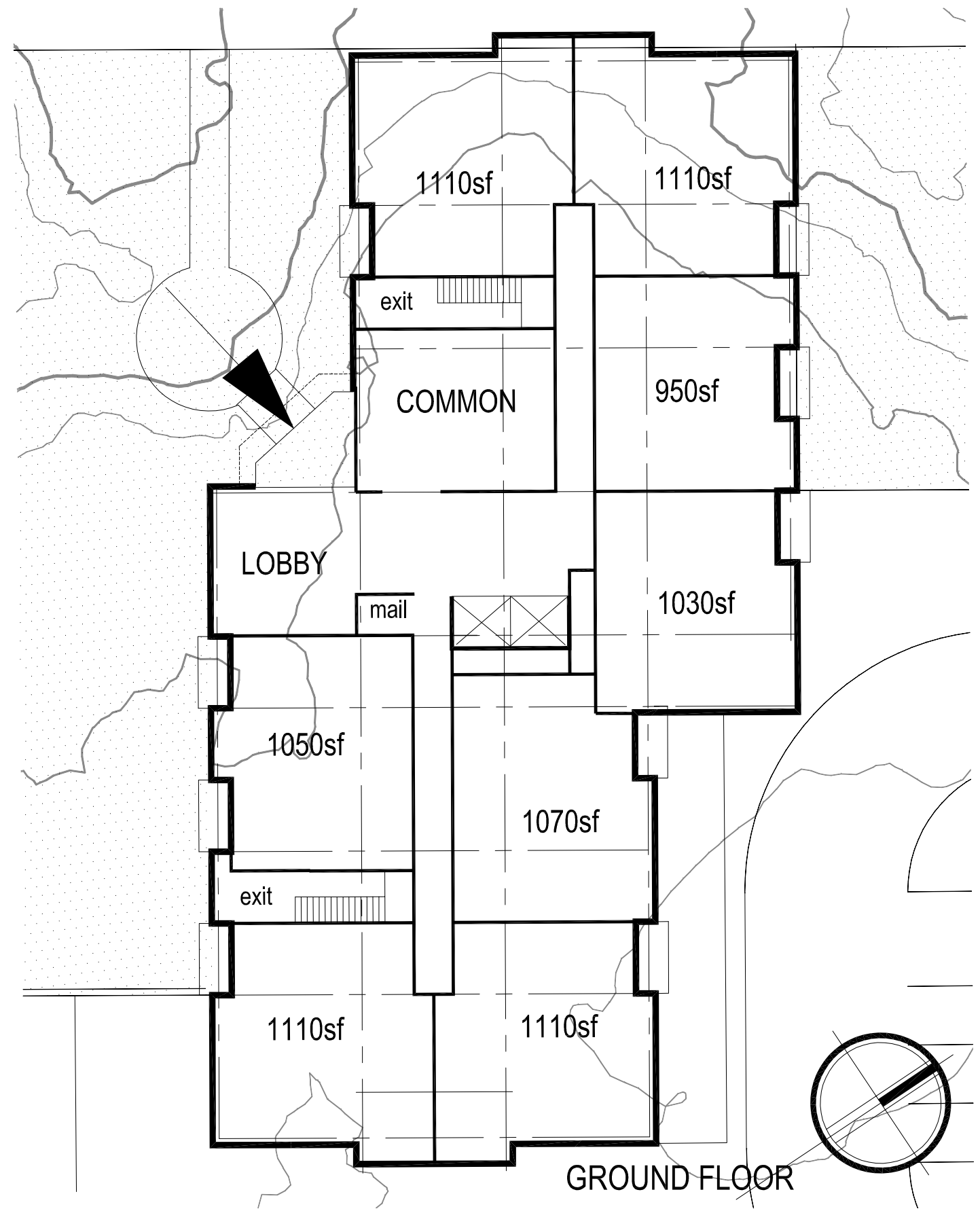
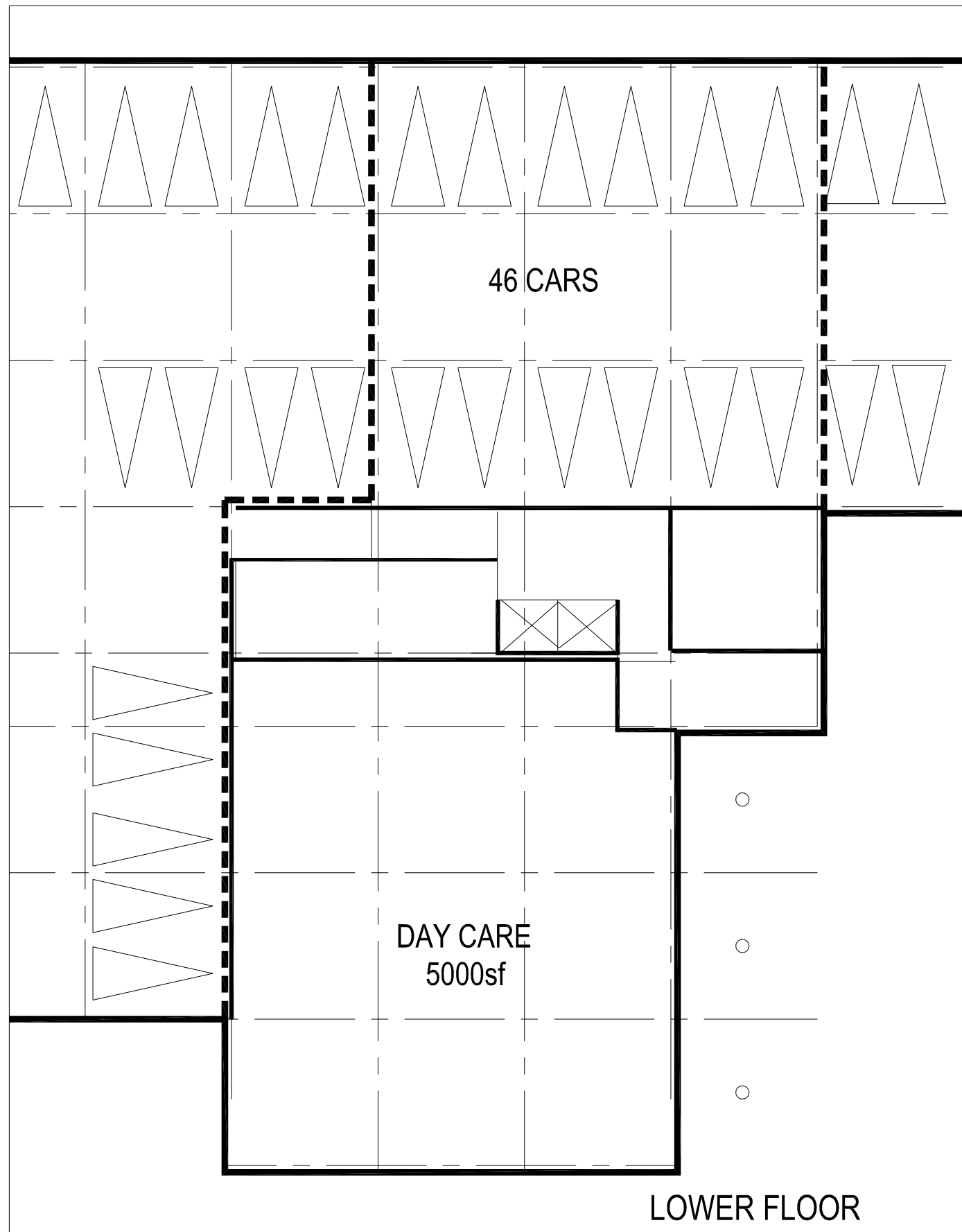


Kassner Goodspeed Architects Ltd.

5663 Cornwallis Street, Suite 200 Halifax, NS B3K 1B6
tel 902 422 1557 | fax 902 422 8685 | www.kgarch.ns.ca

1" = 50'-0"
May 10, 2016

dan / May 05, 2016, 08:20 / C:\Users\dan\AppData\Local\Microsoft\Windows\NetCache\Content.Outlook\MDH9DZ1601_Concept_Plan_May2_2016 (2).dwg



RESIDENTIAL DEVELOPMENT

DARTMOUTH CROSSING LTD.

FLOOR PLANS 1

SCHEMATIC



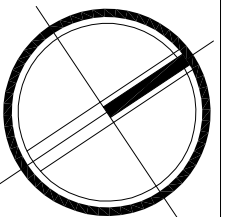
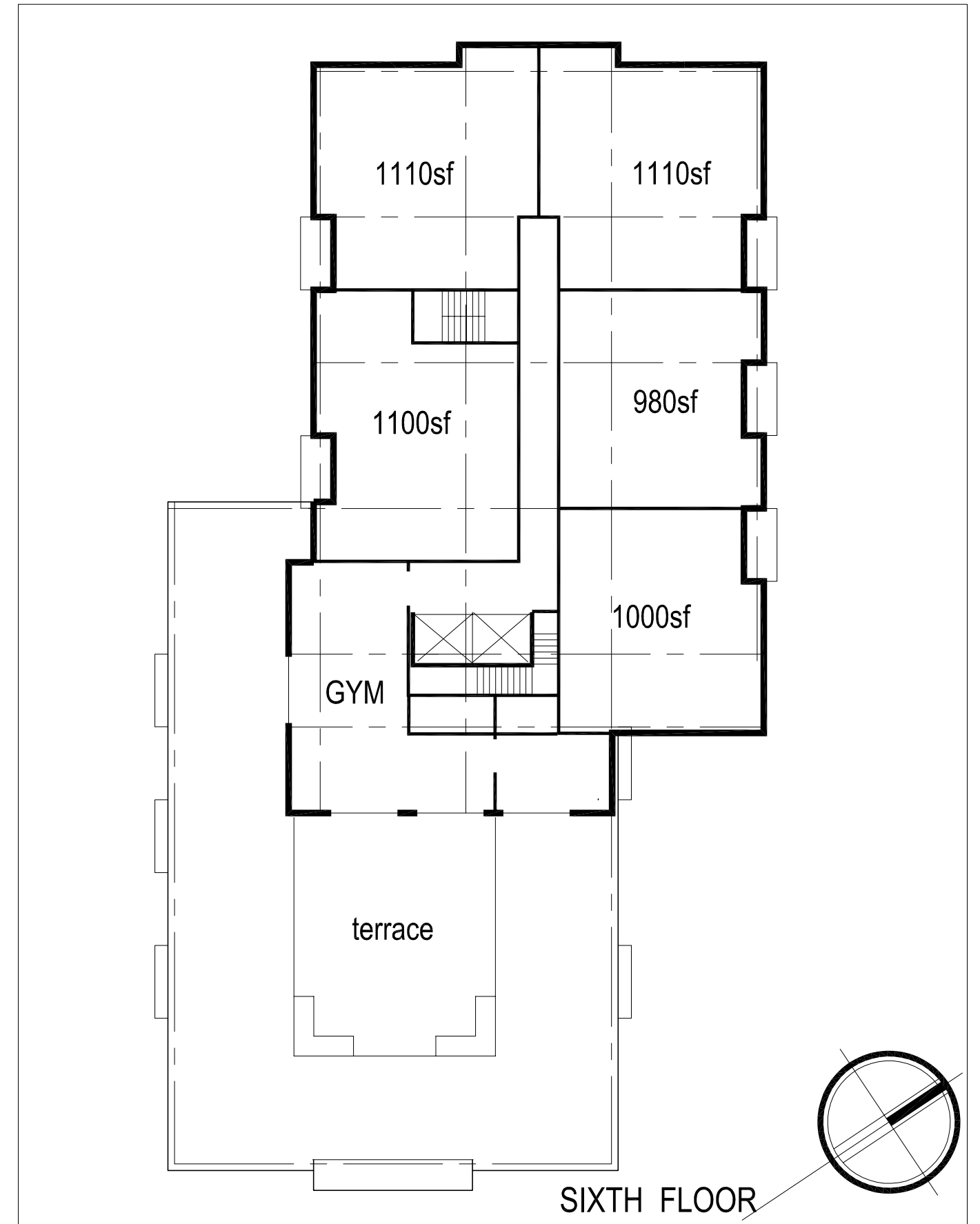
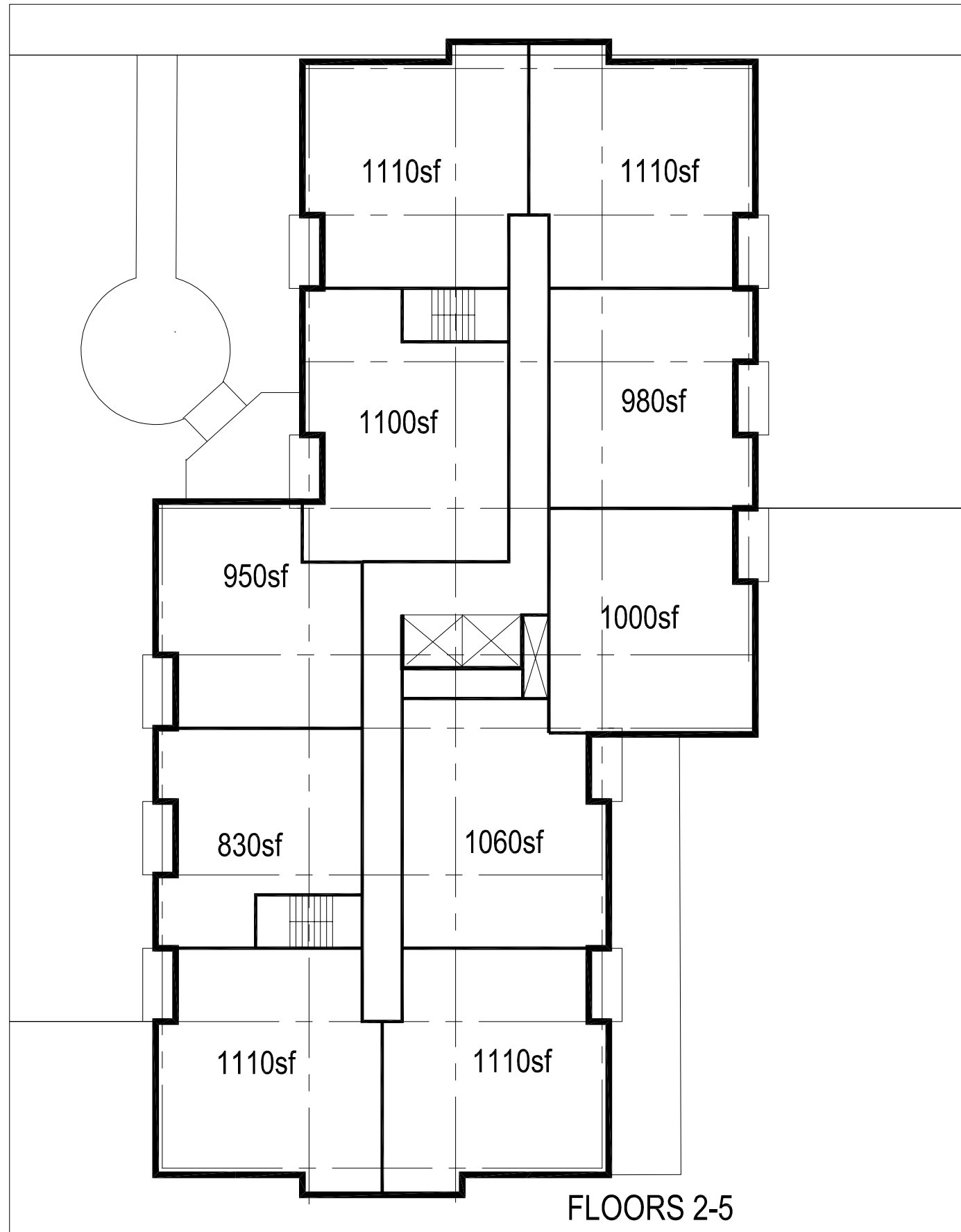
Kassner Goodspeed Architects Ltd.

5663 Cornwallis Street, Suite 200 Halifax, NS B3K 1B6

tel 902 422 1557 | fax 902 422 8685 | www.kgarch.ns.ca

1" = 20'-0"
May 05, 2016

tan / May 05, 2016, 08:20 / C:\Users\Van\AppData\Local\Microsoft\Windows\NetCache\Content.Outlook\MDH9DZ1601_Concept Plans_May2_2016 (2).dwg



Kassner Goodspeed Architects Ltd.

5663 Cornwallis Street, Suite 200 Halifax, NS B3K 1B6
tel 902 422 1557 | fax 902 422 8685 | www.kgarch.ns.ca

RESIDENTIAL DEVELOPMENT

DARTMOUTH CROSSING LTD.

FLOOR PLANS 2

SCHEMATIC

1" = 20'-0"
May 05, 2016

christina / May 13, 2016, 09:31 / F:\Projects\2016\1601 - Dartmouth Crossing L-1\DWG\1601_ELEVATIONS.dwg



RESIDENTIAL DEVELOPMENT

DARTMOUTH CROSSING LTD.

EAST ELEVATION

SCHEMATIC



Kassner Goodspeed Architects Ltd.

5663 Cornwallis Street, Suite 200 Halifax, NS B3K 1B6
tel 902-422-1557 | fax 902-422-8685 | www.kgarch.ns.ca

1" = 50'-0"
May 13, 2016

christina / May 13, 2016, 09:51 / F:\Projects\2016\1601 - Dartmouth Crossing L-1\DWG\1601_ELEVATIONS.dwg



ALUMINUM. T. GLASS RAIL

BRICK MASONRY VENEER

PVC WINDOWS

ARCHITECTURAL CONCRETE

RESIDENTIAL DEVELOPMENT

DARTMOUTH CROSSING LTD.

NORTH ELEVATION

SCHEMATIC



Kassner Goodspeed Architects Ltd.

5663 Cornwallis Street, Suite 200 Halifax, NS B3K 1B6

tel 902-422-1557 | fax 902-422-8685 | www.kgarch.ns.ca

1" = 50'-0"
May 13, 2016

christina / May 13, 2016, 09:49 / F:\Projects\2016\1601 - Dartmouth Crossing L-1\DWG\1601_ELEVATIONS.dwg



- ALUMINUM. T. GLASS RAIL
- BRICK MASONRY VENEER
- PVC WINDOWS



Kassner Goodspeed Architects Ltd.

5663 Cornwallis Street, Suite 200 Halifax, NS B3K 1B6
tel 902-422-1557 | fax 902-422-8685 | www.kgarch.ns.ca

RESIDENTIAL DEVELOPMENT

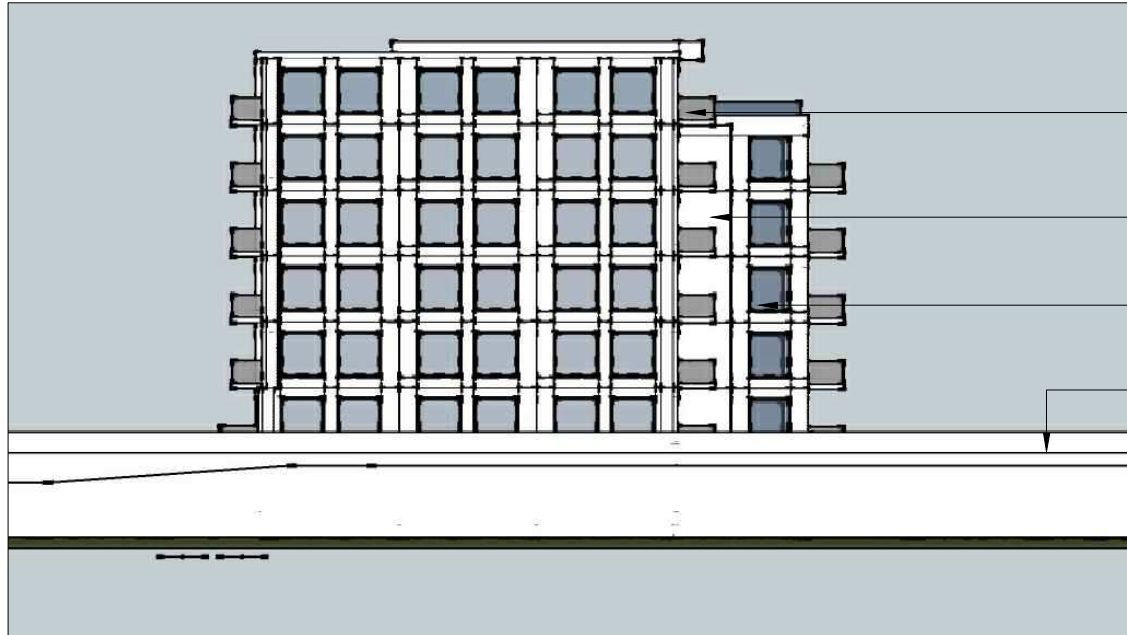
DARTMOUTH CROSSING LTD.

SOUTH ELEVATION

SCHEMATIC

1" = 50'-0"
May 13, 2016

christina / May 13, 2016, 09:32 / F:\Projects\2016\1601 - Dartmouth Crossing L-1\DWG\1601_ELEVATIONS.dwg



ALUMINUM. T. GLASS RAIL

BRICK MASONRY VENEER

PVC WINDOWS

ARCHITECTURAL CONCRETE

RESIDENTIAL DEVELOPMENT

DARTMOUTH CROSSING LTD.

WEST ELEVATION

SCHEMATIC



Kassner Goodspeed Architects Ltd.

5663 Cornwallis Street, Suite 200 Halifax, NS B3K 1B6
tel 902-422-1557 | fax 902-422-8685 | www.kgarch.ns.ca

1" = 50'-0"
May 13, 2016