

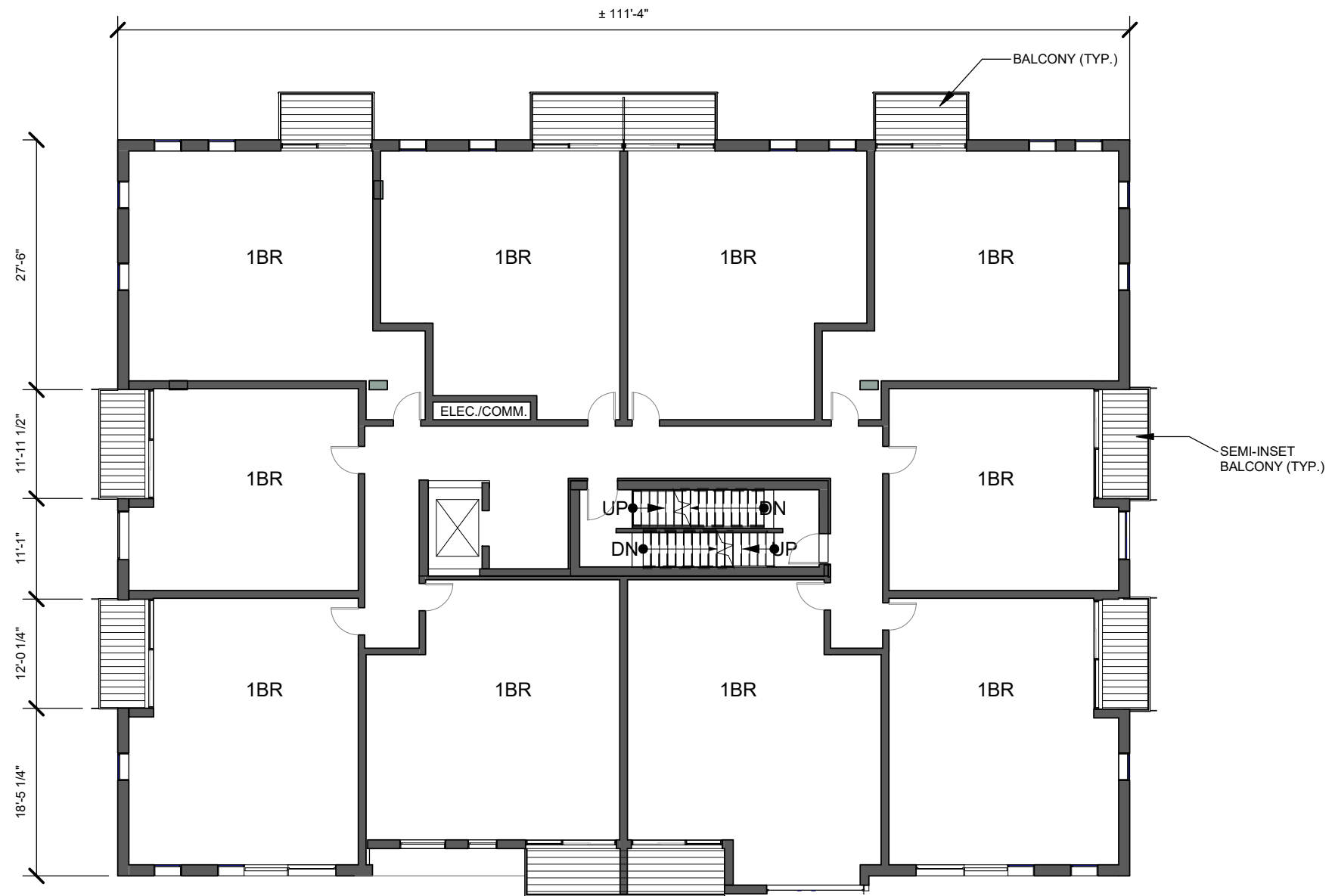
STACKHOUSE
5530 BILBY ST. HALIFAX NS

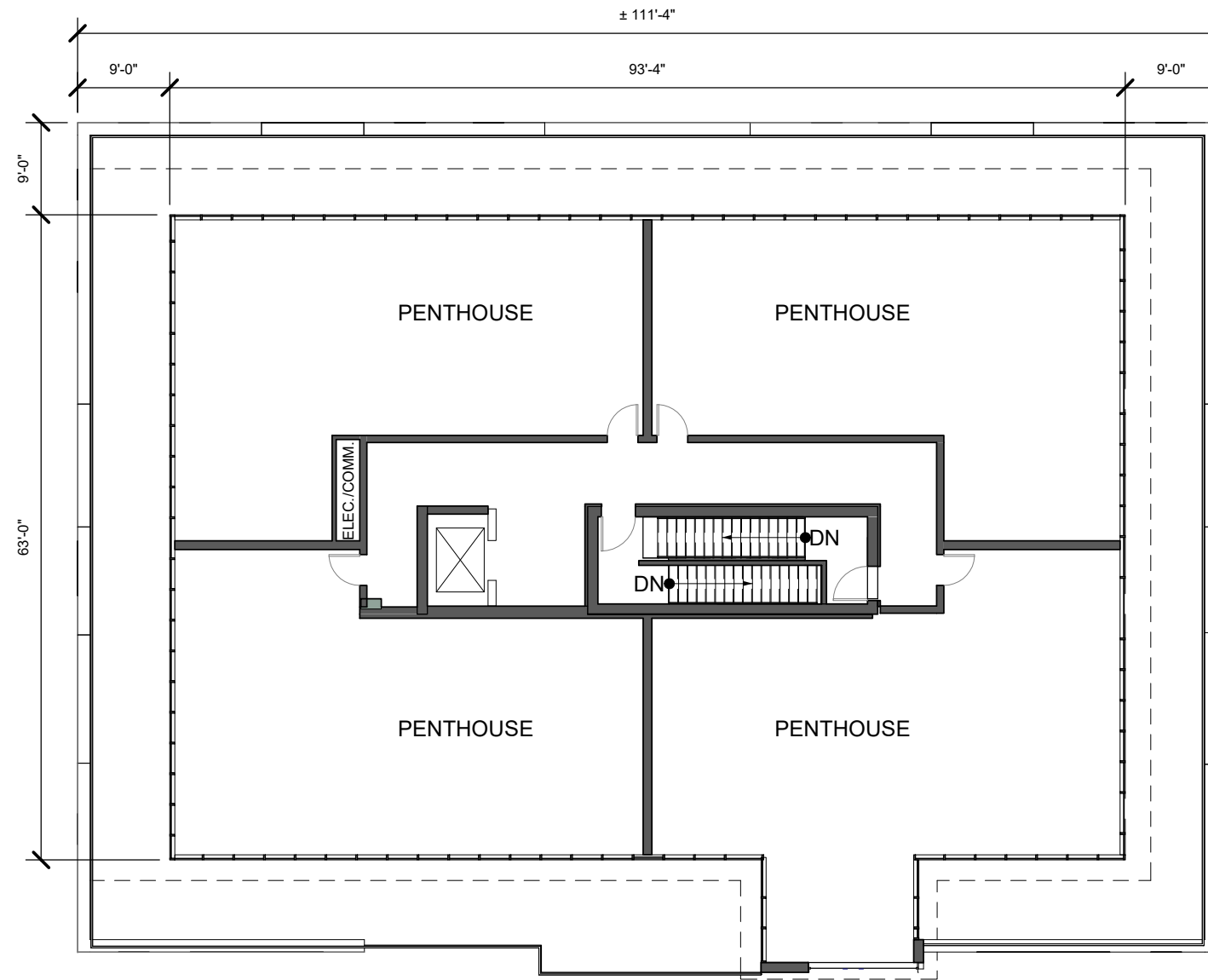
LEVEL 400 FLOOR PLAN

PROJECT NO. 2015-32
SCALE 1/16" = 1'-0"
DATE JANUARY 2017



A06







STACKHOUSE
 5530 BILBY ST. HALIFAX NS

NORTH ELEVATION (BILBY STREET)

PROJECT NO. 2015-32
 SCALE 3/32" = 1'-0"
 DATE JANUARY 2017



A09

2/17/2017 05:12:03 PM



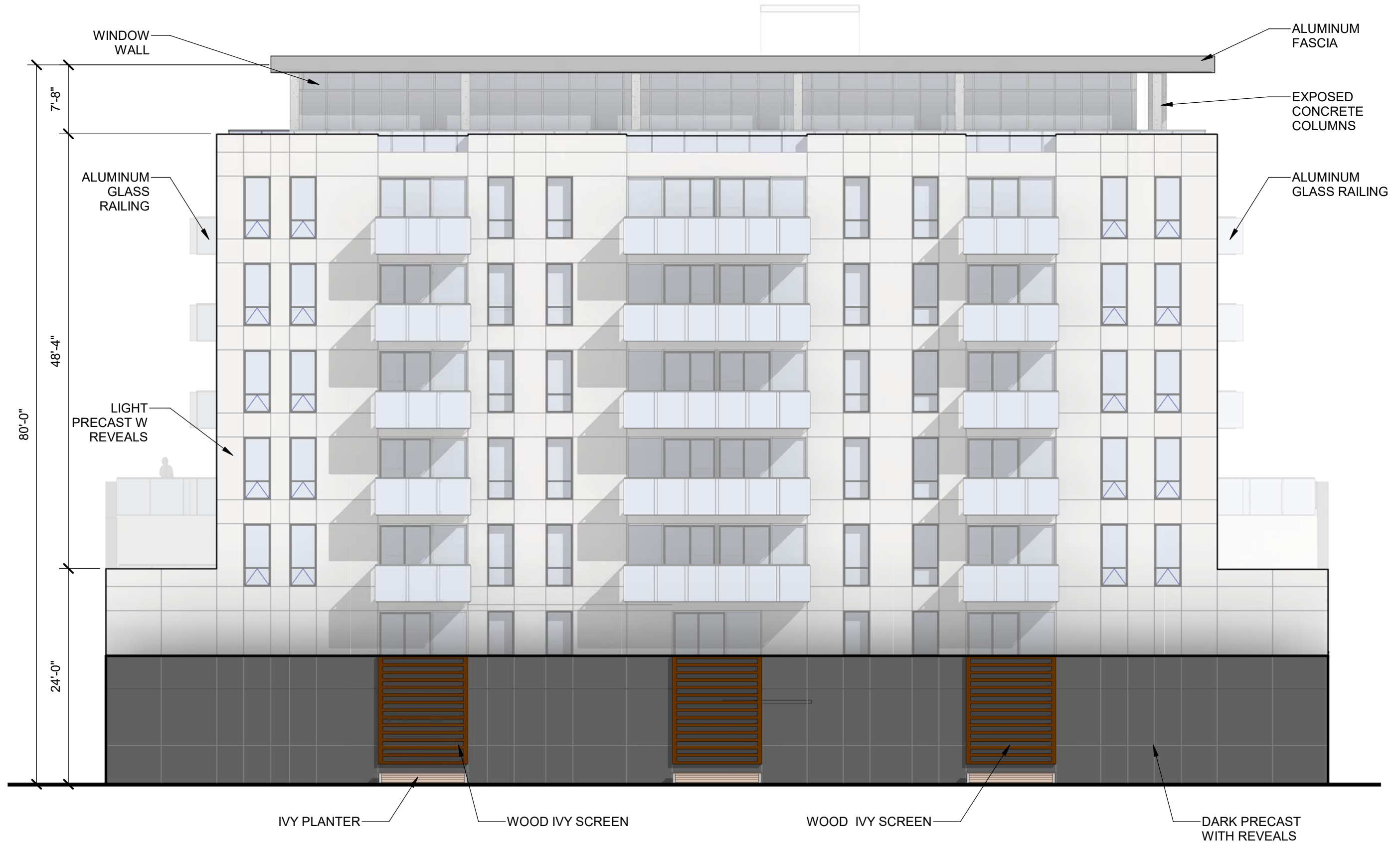
STACKHOUSE
5530 BILBY ST. HALIFAX NS

EAST ELEVATION

PROJECT NO. 2015-32
SCALE 3/32" = 1'-0"
DATE JANUARY 2017

WMFARES
ARCHITECTS

A10



STACKHOUSE
5530 BILBY ST. HALIFAX NS

SOUTH ELEVATION

PROJECT NO. 2015-32
SCALE 3/32" = 1'-0"
DATE JANUARY 2017

WMFARES
ARCHITECTS

A11



STACKHOUSE
5530 BILBY ST. HALIFAX NS

WEST ELEVATION

PROJECT NO. 2015-32
SCALE 3/32" = 1'-0"
DATE JANUARY 2017

WMFARES
ARCHITECTS

A12

2/17/2017 8:51:04 AM