

Client
 BANC Group of Companies
 1 Craigmore Drive, Suite 201
 Halifax, NS
 B3N 0C6

Project
 WELLINGTON APARTMENTS
 1110 Wellington Avenue, Halifax, NS

Consultants
 Lydon Lynch Architects Limited
 Architects
 1559 Barrington Street, Suite 401
 Halifax, Nova Scotia B3J 2K2
 Tel: (902) 422-1446
 Fax: (902) 422-1449

Design Point
 Civil Engineer
 200 Waterfront Drive, Suite 100
 Halifax, Nova Scotia B4N 1Y1
 Tel: (902) 414-8131
 emt: glenn.woodford@designpoint.ca

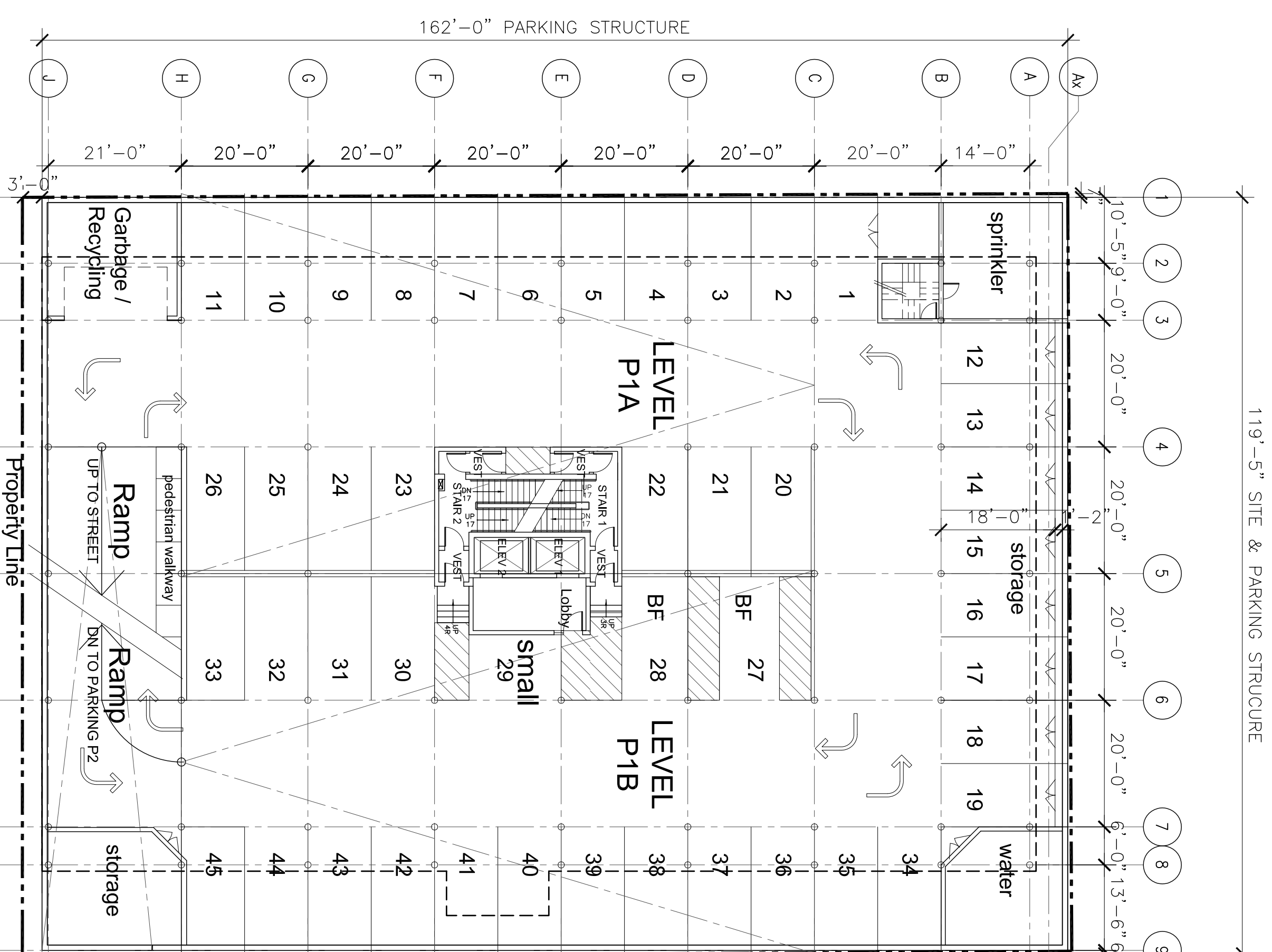
NOTES
 DO NOT SCALE THIS DRAWING FOR CONSTRUCTION
 PURPOSES. USE PROVIDED DIMENSIONS AS NOTED.
 THESE DRAWINGS ARE TO BE READ IN CONJUNCTION WITH
 THE PROJECT'S CONTRACT DOCUMENTS AND ALL APPLICABLE
 REGULATIONS AND ORDINANCES.
 ALL DIMENSIONS AND CONDITIONS ARE TO BE VERIFIED ON
 SITE. ALL DISCREPANCIES ARE TO BE REPORTED TO THE
 ARCHITECT IMMEDIATELY.
 THESE DRAWINGS ARE TO BE USED FOR THIS PROJECT ONLY
 AND SHALL NOT BE USED FOR ANY OTHER PURPOSE
 WITHOUT WRITTEN CONSENT OF THE ARCHITECT.

No.	Date	Issued
2	2018/03/21	REVISED PLAN AMMENDMENT
1	2016/08/18	FOR PLAN AMMENDMENT

UNDERGROUND PARKING
 LEVEL PLANS

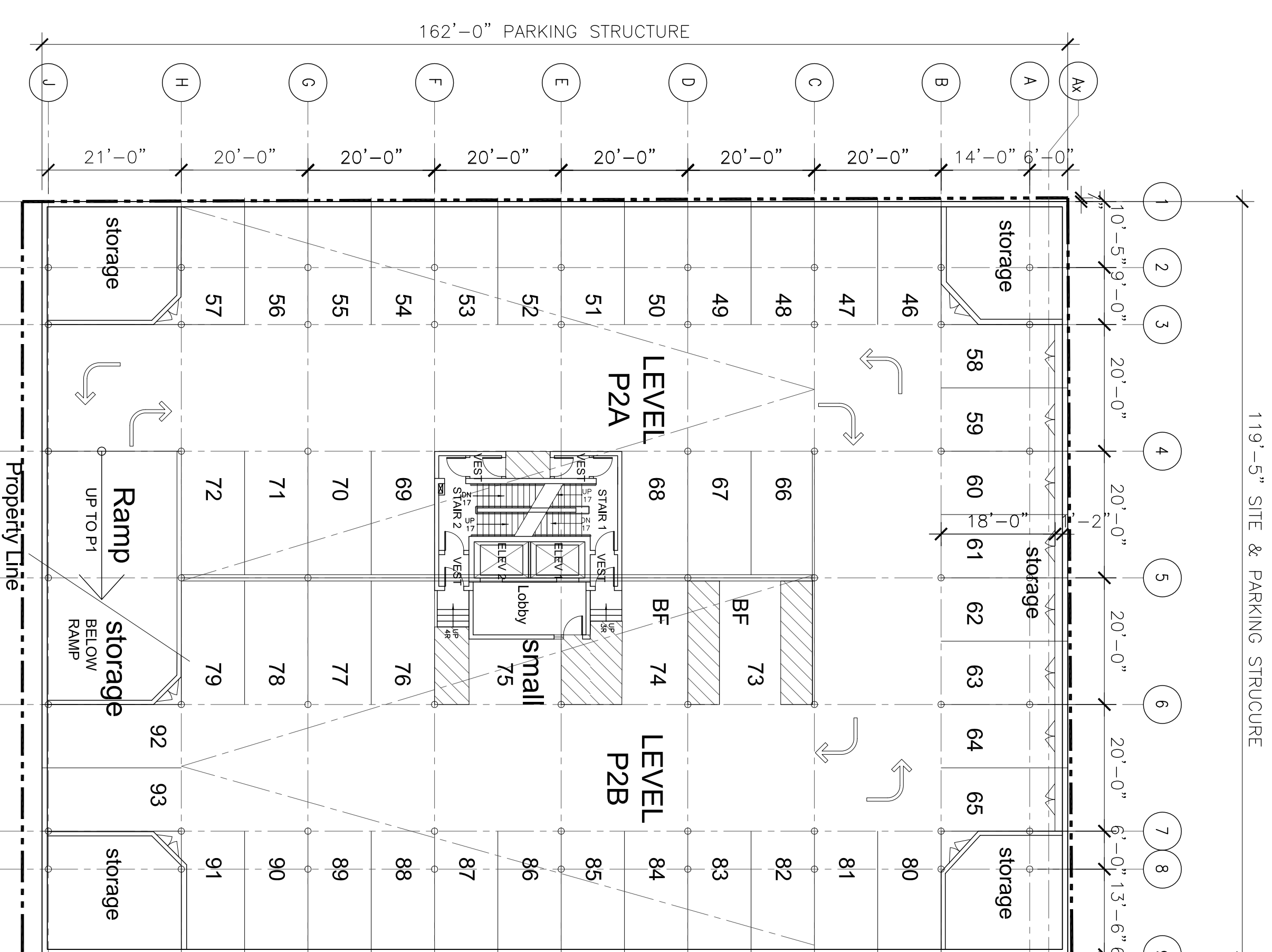
Drawing Scale: 1/16" = 1'-0"
 Project No.: 16008
 Drawn By: LLA
 Checked By: LLA

A-101



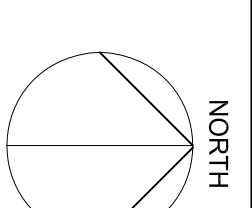
1 PARKING LEVEL P1
 1/16" = 1'-0"

44 + 1 small Spaces



2 PARKING LEVEL P2
 1/16" = 1'-0"

47 + 1 small Spaces



Client
 BANC Group of Companies
 1 Craigmore Drive, Suite 201
 Halifax, NS
 B3N 0C6

Project
WELLINGTON APARTMENTS
 1110 Wellington Avenue, Halifax, NS

Consultants
Lydon Lynch Architects Limited
 Architects
 1559 Barrington Street, Suite 401
 Halifax, Nova Scotia B3J 2K2
 Tel: (902) 422-1446
 Fax: (902) 422-1449

Design Point
 Civil Engineer
 200 Waterfront Park, Suite 100
 Halifax, Nova Scotia B4L 5Y4
 Tel: (902) 414-8181
 em: glenn.woodford@designpoint.ca

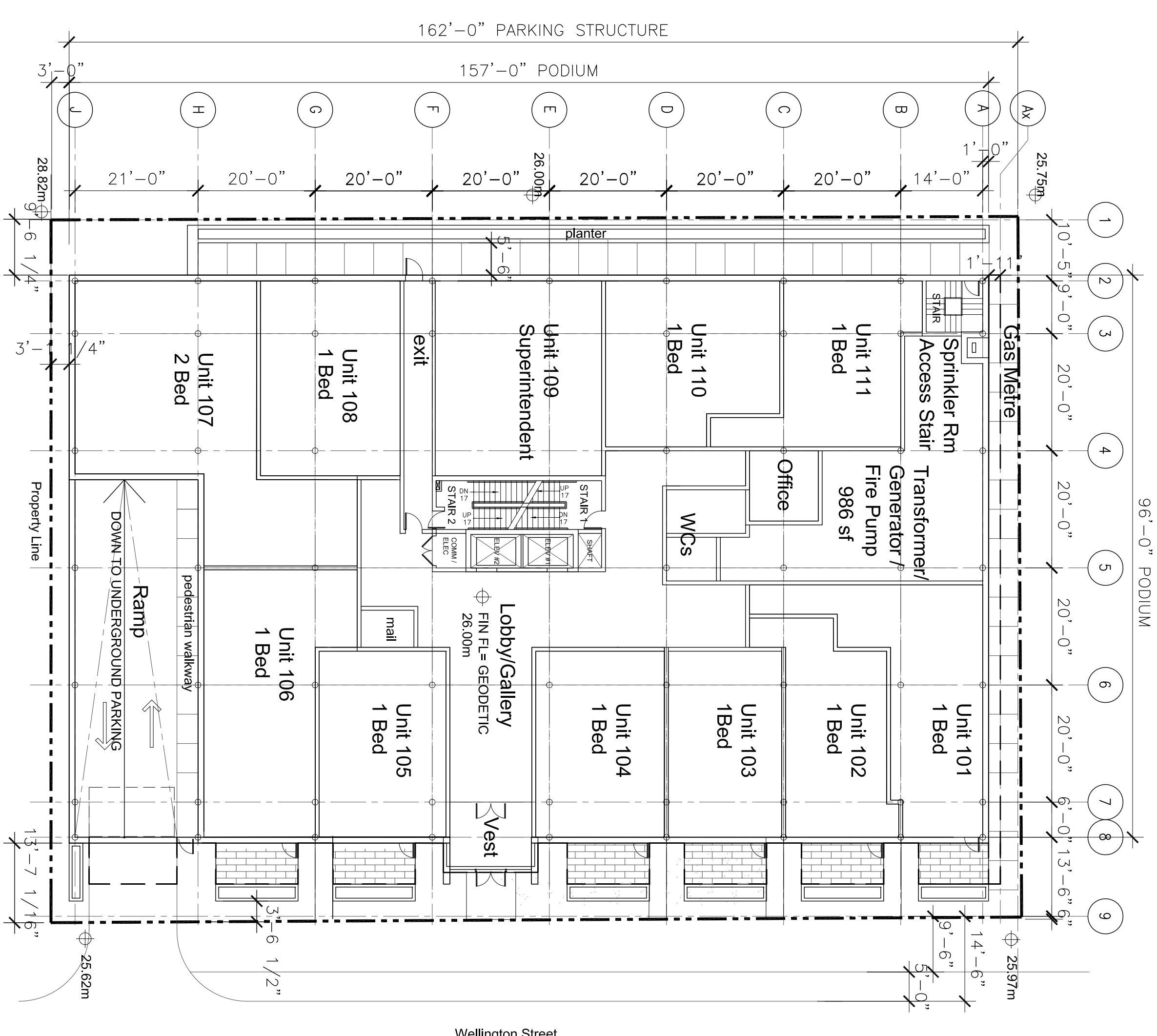
NOTES
 DO NOT SCALE THIS DRAWING FOR CONSTRUCTION
 DIMENSIONS ARE TO BE READ IN CONJUNCTION WITH
 THESE DIMENSIONS ARE TO BE READ IN CONJUNCTION WITH
 ALL DIMENSIONS AND CONDITIONS ARE TO BE VERIFIED ON
 SITE. ALL DIMENSIONS ARE TO BE REPORTED TO THE
 THESE DIMENSIONS ARE TO BE USED FOR THIS PROJECT ONLY
 AND SHALL NOT BE USED FOR ANY OTHER PURPOSE
 WITHOUT WRITTEN CONSENT OF THE ARCHITECT

No.	Date	Issued
2	2018/03/21	REVISED PLAN AMMENDMENT
1	2016/08/18	FOR PLAN AMMENDMENT

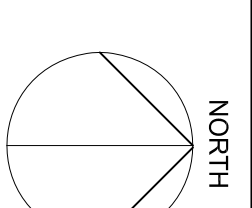
MAIN FLOOR PLAN

Drawing Scale: 1/16" = 1'-0"
 Project No.: 16008
 Drawn By: LLA
 Checked By: LLA

A-102



1 MAIN FLOOR PLAN
 1/16" = 1'-0"



Client
 BANC Group of Companies
 1 Craigmore Drive, Suite 201
 Halifax, NS
 B3N 0C6

Project
 WELLINGTON APARTMENTS
 1110 Wellington Avenue, Halifax, NS

Consultants
 Lydon Lynch Architects Limited
 Architects

1559 Barrington Street, Suite 401
 Halifax, Nova Scotia B3J 2K2
 Tel: (902) 422-1446
 Fax: (902) 422-1449

Design Point

Civil Engineer
 200 Waterfront Drive, Suite 100
 Halifax, Nova Scotia B4L 5Y1
 Tel: (902) 414-8181
 eml: glenn.woodford@designpoint.ca

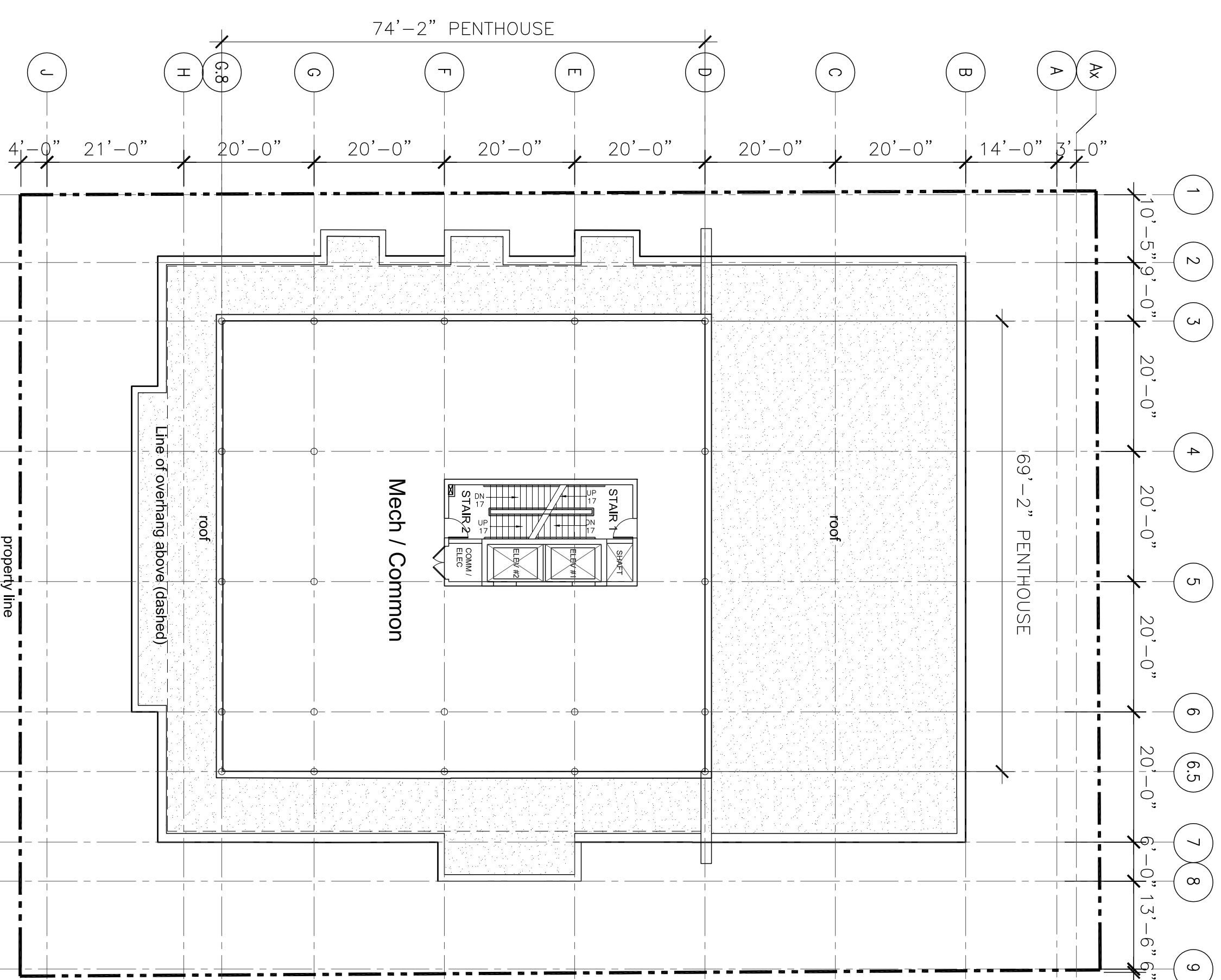
NOTES
 DO NOT SCALE THIS DRAWING FOR CONSTRUCTION
 PURPOSES USE FINISHED DIMENSIONS AS NOTED.
 THESE DIMENSIONS ARE TO BE READ IN CONJUNCTION WITH
 ALL DIMENSIONS AND CONDITIONS ARE TO BE VERIFIED ON
 SITE. ALL DIMENSIONS ARE TO BE REPORTED TO THE
 THESE DIMENSIONS ARE TO BE USED FOR THIS PROJECT ONLY
 AND SHALL NOT BE USED FOR ANY OTHER PURPOSE
 WITHOUT WRITTEN CONSENT OF THE ARCHITECT

No.	Date	Issued
2	2018/03/21	REVISED PLAN AMMENDMENT
1	2016/08/18	FOR PLAN AMMENDMENT

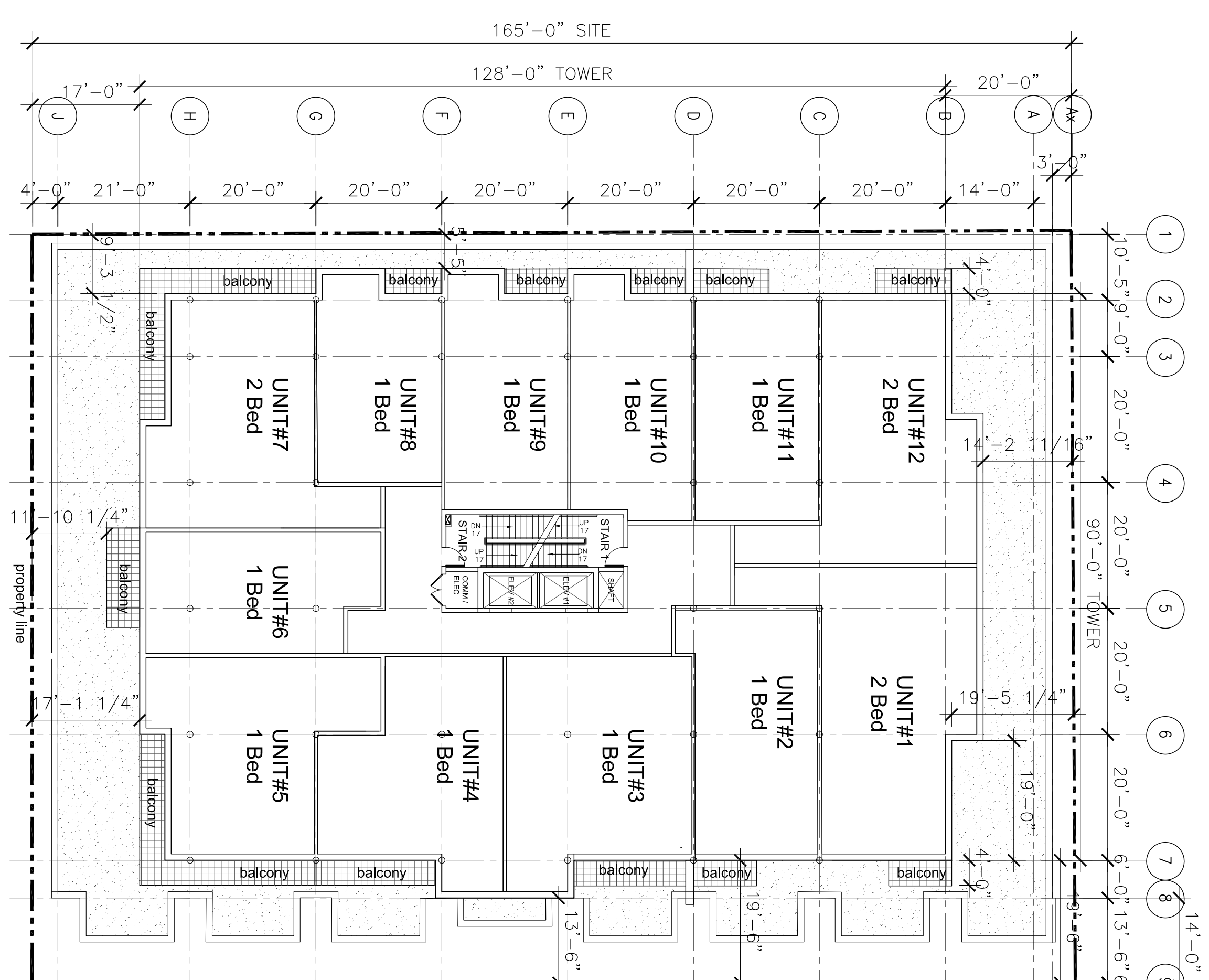
TYPICAL FLOOR PLANS 4 - 8 &
 PENTHOUSE PLAN

Drawing Scale: 1/16" = 1'-0"
 Project No.: 16008
 Drawn By: LLA
 Checked By: LLA

A-104



1 LEVEL 9 MECH PENTHOUSE PLAN
 1/16" = 1'-0"



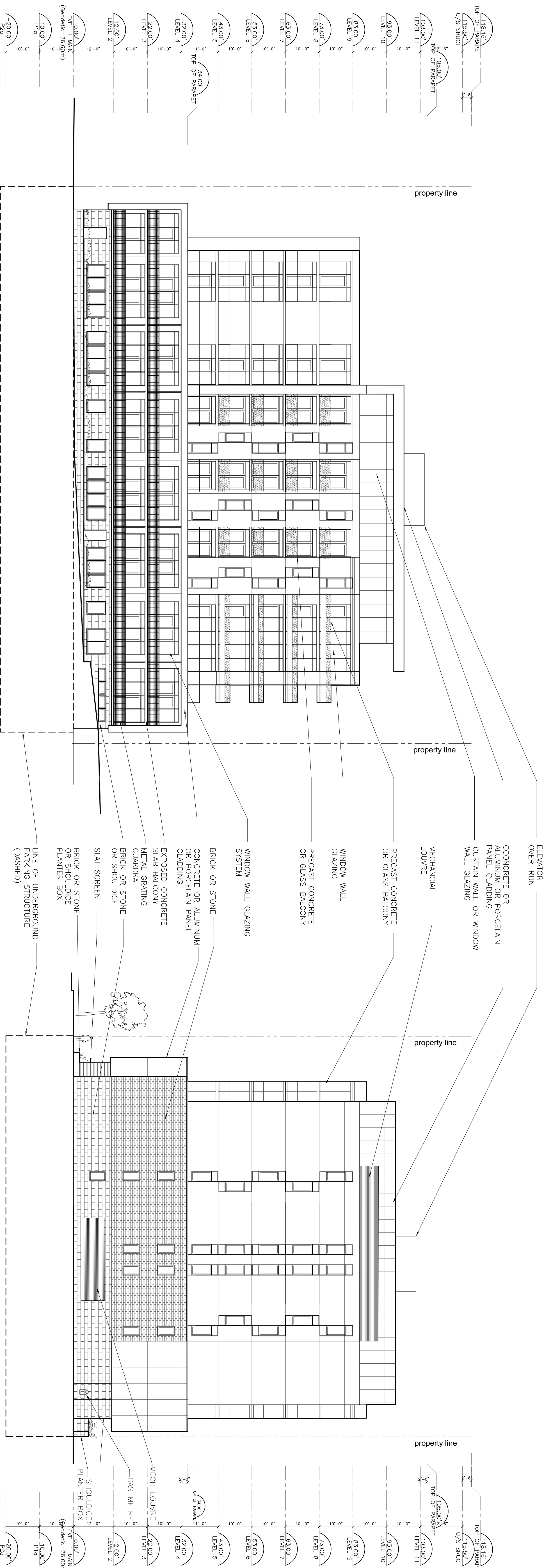
2 TYPICAL FLOOR PLAN (LEVELS 4 TO 8)
 1/16" = 1'-0" NOTE: BALCONY LOCATIONS VARY, REFER TO ELEVATIONS



1 MODEL VIEW - WEST (PARK) ELEVATION
 NTS



2 MODEL VIEW - NORTH ELEVATION
 NTS



NOTES

DO NOT SCALE THIS DRAWING FOR CONSTRUCTION PURPOSES. USE FINISHED DIMENSIONS AS NOTED.

THESE DRAWINGS ARE TO BE SEAL IN CONJUNCTION WITH THE SEALS OF THE ARCHITECT AND ENGINEER.

ALL DIMENSIONS AND CONDITIONS ARE TO BE VERIFIED ON SITE. ALL DIMENSIONS ARE TO BE REPORTED TO THE ARCHITECT AND ENGINEER.

THESE DRAWINGS ARE TO BE USED FOR THE PROJECT ONLY AND SHALL NOT BE USED FOR ANY OTHER PURPOSE WITHOUT THE WRITTEN CONSENT OF THE ARCHITECT.

No.	Date	Issued
1	2016/08/18	FOR PLAN AMMENDMENT
2	2018/03/21	REVISED PLAN AMMENDMENT

WEST & NORTH ELEVATIONS

Drawing Scale: AS SHOWN
 Project No.: 16008
 Drawn By: LIA
 Checked By: LIA

A-201

LYDON LYNCH

Client
 BANC Group of Companies
 1 Crainmore Drive, Suite 201
 Halifax, NS
 B3N 0C6

Project
 WELLINGTON APARTMENTS
 1110 Wellington Avenue, Halifax, NS

Consultants
 Lydon Lynch Architects Limited

Architects
 1569 Barrington Street, Suite 401
 Halifax, Nova Scotia B3J 2K2
 Tel: (902) 422-1446
 Fax: (902) 422-1449

Design Point
 Civil Engineer
 200 Waterfront Park, Suite 100
 Halifax, Nova Scotia B3M 1Y1
 Tel: (902) 414-8181
 emt: glenn.woodford@designpoint.ca