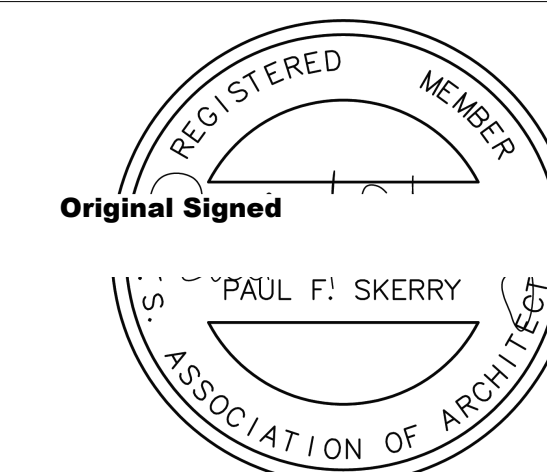
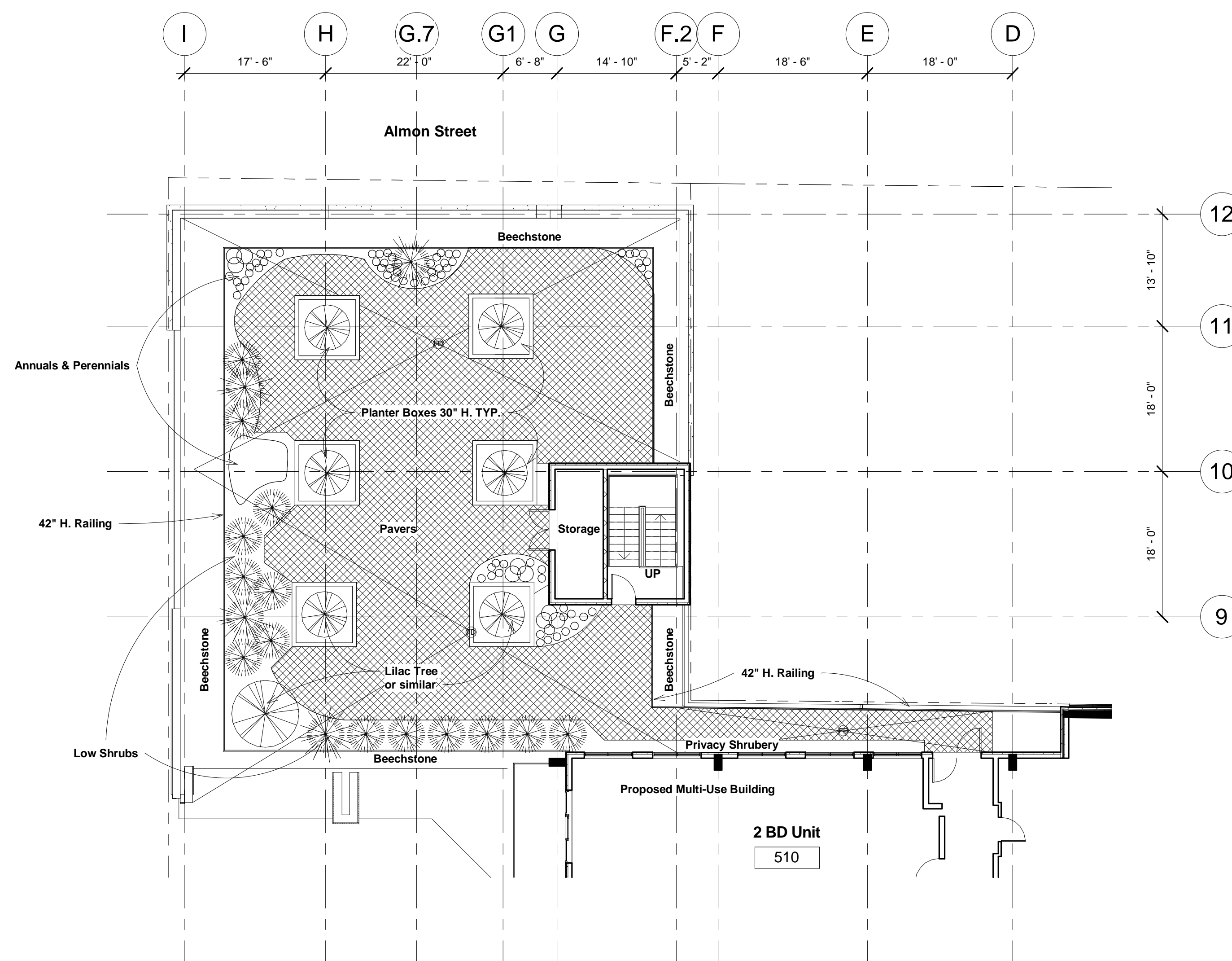


NOTES:

- 1) THE CONTRACTOR IS RESPONSIBLE FOR CHECKING ALL ALL DIMENSIONS ON SITE & REPORTING ANY DISCREPANCY TO THE ARCHITECT BEFORE PROCEEDING.
- 2) DO NOT SCALE FROM DRAWINGS USED FIGURED DIMENSIONS.
- 3) DRAWING REPRESENTATIONS MAYBE IN VARIANCE W/ DETAILED SPECS. & SCHEDULES. IN WHICH CASE SPECS. & SCHEDULES OVERRIDE THE DRAWINGS.
- 4) CHANGES FROM THESE PLANS & SPECS. MUST BE AGREED TO IN WRITING, & APPROVED BY THE ARCHITECT & OWNER, BEFORE PROCEEDING.
- 5) ONLY THOSE DRAWINGS MARKED APPROVED FOR CONSTRUCTION. ARE TO BE USED FOR CONSTRUCTION.
- 6) THESE DRAWINGS ARE TO BE READ IN CONJUNCTION W/ THE SPECS.



No.	Description	Date
1	Change in DA Revised per HRM Comments	9/27/2016 3/9/2017



1 Level 5 DA Landscape Plan
 3/32" = 1'-0"

Proposed
 Commercial/Apartment
 Lot N
 Almon & Bloomfield
 Halifax, N.S.

**5th Floor Landscape
 Plan**

Scale	3/32" = 1'-0"
Date	September 27, 2016
Drawn by	GJ
Checked by	PS

L2

Project number	3022
----------------	------