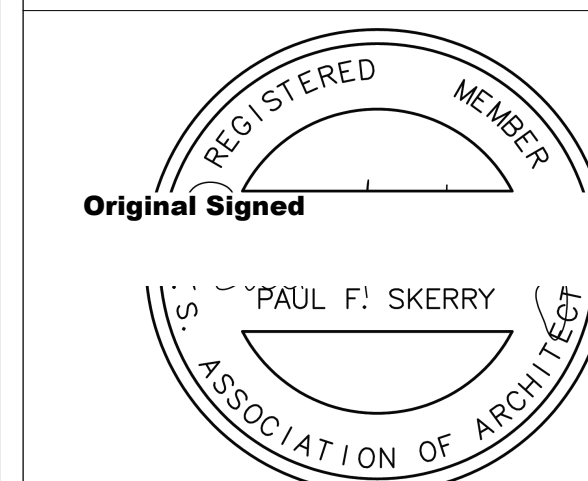


pskerry@pskerry.ca

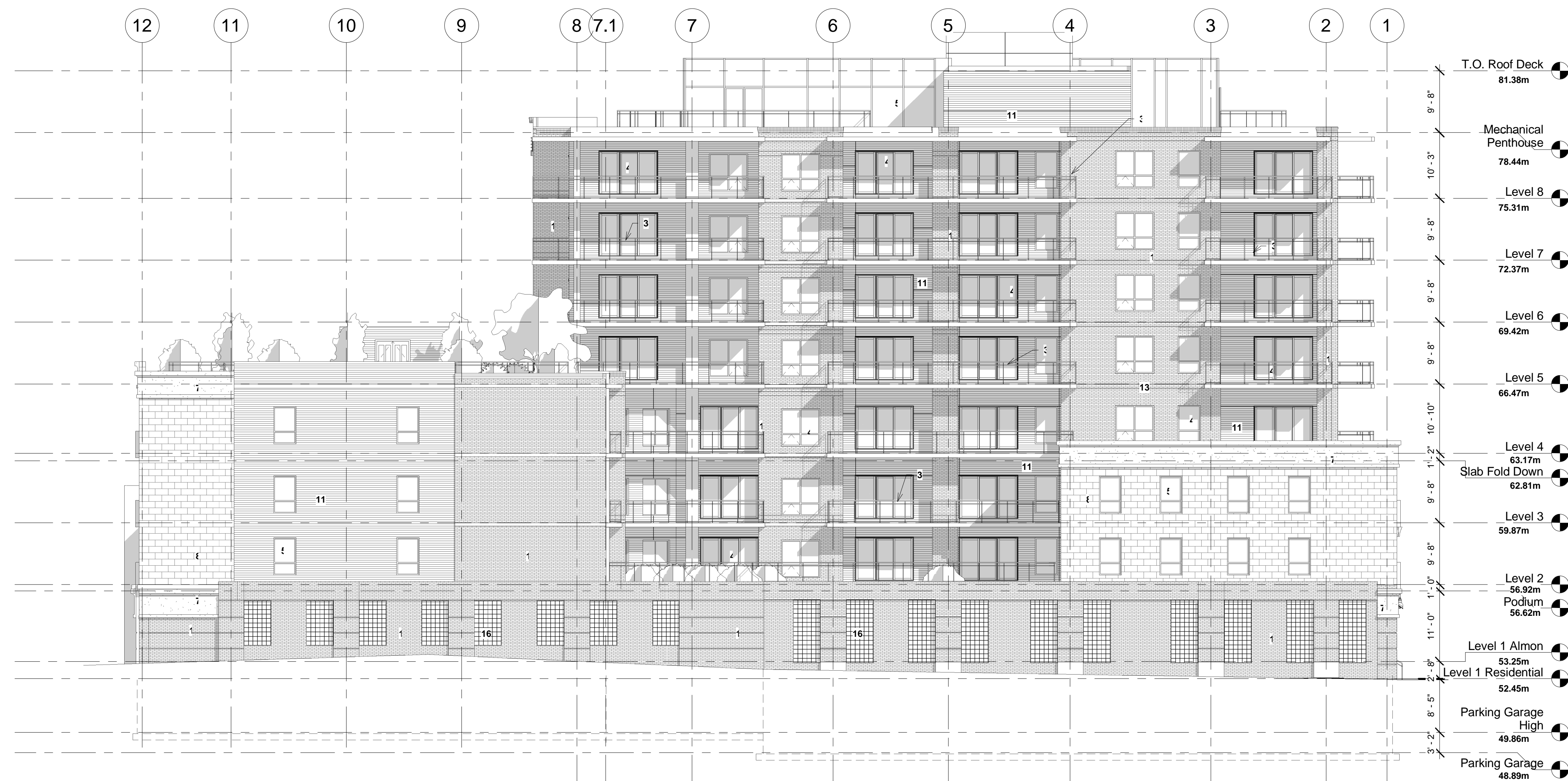
**PAUL SKERRY ASSOCIATES**  
 5514 Livingstone Place  
 Halifax, Nova Scotia B3K 2B9  
 ph: 902-455-4361  
 fax: 902-455-7778  
 email: drawing@pskerry.ca

**NOTES:**

- 1) THE CONTRACTOR IS RESPONSIBLE FOR CHECKING ALL ALL DIMENSIONS ON SITE & REPORTING ANY DISCREPANCY TO THE ARCHITECT BEFORE PROCEEDING.
- 2) DO NOT SCALE FROM DRAWINGS USED FIGURED DIMENSIONS.
- 3) DRAWING REPRESENTATIONS MAYBE IN VARIANCE W/ DETAILED SPECS. & SCHEDULES, IN WHICH CASE SPECS. & SCHEDULES OVERRIDE THE DRAWINGS.
- 4) CHANGES FROM THESE PLANS & SPECS. MUST BE AGREED TO IN WRITING, & APPROVED BY THE ARCHITECT & OWNER, BEFORE PROCEEDING.
- 5) ONLY THOSE DRAWINGS MARKED APPROVED FOR CONSTRUCTION, ARE TO BE USED FOR CONSTRUCTION.
- 6) THESE DRAWINGS ARE TO BE READ IN CONJUNCTION W/ THE SPECS.



No.	Description	Date
1	Change in DA Revised per HRM Comments	9/27/2016 3/9/2017



- LEGEND:**
- 1 - PRECAST PANELS OR MASONRY BRICK - TYPE 1
  - 2 - STONE BASE
  - 3 - 42" H. ALUMINUM/GLASS RAILING
  - 4 - VINYL WINDOW/DOOR
  - 5 - ALUMINUM GLAZING SYSTEM
  - 6 - EXTERIOR LIGHTING FIXTURE
  - 7 - STUCCO BAND
  - 8 - MASONRY BRICK - TYPE 2
  - 9 - FIBER CEMENT SIDING
  - 10- 42" H. METAL RAILING
  - 11- FIBER CEMENT PANELS
  - 12- PLANTER
  - 13- PRECAST PANELS OR MASONRY BRICK - TYPE 3
  - 14- NON-COMBUSTIBLE SCREEN
  - 16- GLASS BLOCK (90 Min. Fire Rated)

1 West Elevation DA  
 3/32" = 1'-0"

Proposed  
 Commercial/Apartment  
 Lot N  
 Almon & Bloomfield  
 Halifax, N.S.

**West Elevation**

Scale	3/32" = 1'-0"
Date	September 27, 2016
Drawn by	GJ
Checked by	PS

**DA4.2**

Project number	3022
----------------	------