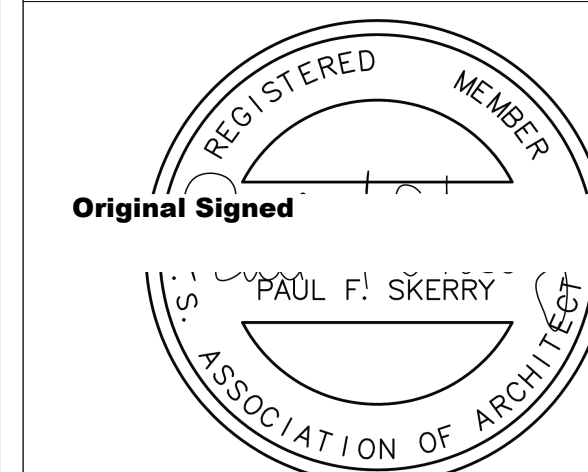
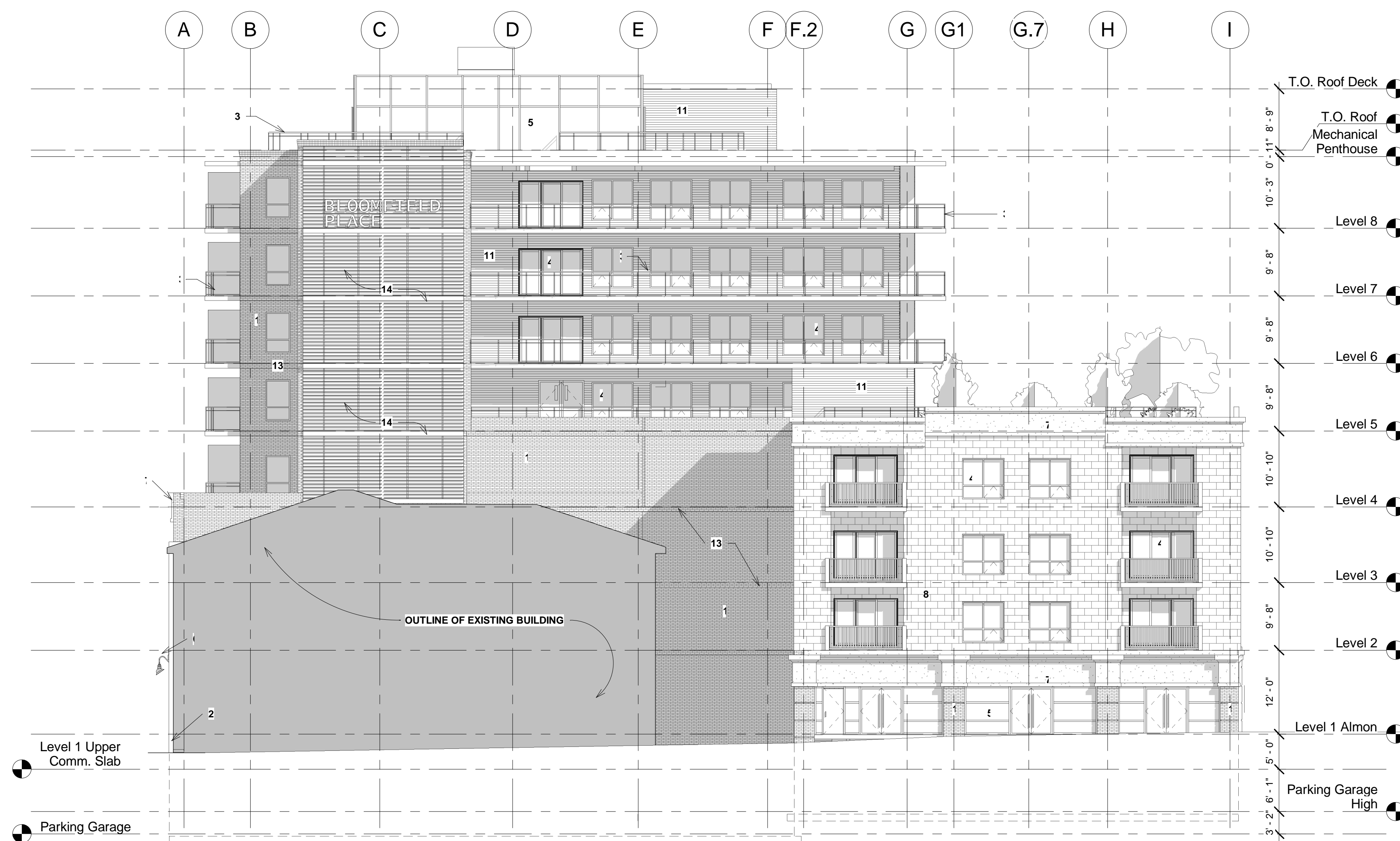


NOTES:

- 1) THE CONTRACTOR IS RESPONSIBLE FOR CHECKING ALL ALL DIMENSIONS ON SITE & REPORTING ANY DISCREPANCY TO THE ARCHITECT BEFORE PROCEEDING.
- 2) DO NOT SCALE FROM DRAWINGS USED FIGURED DIMENSIONS.
- 3) DRAWING REPRESENTATIONS MAYBE IN VARIANCE W/ DETAILED SPECS. & SCHEDULES, IN WHICH CASE SPECS. & SCHEDULES OVERRIDE THE DRAWINGS.
- 4) CHANGES FROM THESE PLANS & SPECS. MUST BE AGREED TO IN WRITING, & APPROVED BY THE ARCHITECT & OWNER, BEFORE PROCEEDING.
- 5) ONLY THOSE DRAWINGS MARKED APPROVED FOR CONSTRUCTION, ARE TO BE USED FOR CONSTRUCTION.
- 6) THESE DRAWINGS ARE TO BE READ IN CONJUNCTION W/ THE SPECS.



No.	Description	Date
	Change in DA	9/27/2016
1	Revised per HRM Comments	3/9/2017



LEGEND:

- 1 - PRECAST PANELS OR MASONRY BRICK - TYPE 1
- 2 - STONE BASE
- 3 - 42" H. ALUMINUM/GLASS RAILING
- 4 - VINYL WINDOW/DOOR
- 5 - ALUMINUM GLAZING SYSTEM
- 6 - EXTERIOR LIGHTING FIXTURE
- 7 - STUCCO BAND
- 8 - MASONRY BRICK - TYPE 2
- 9 - FIBER CEMENT SIDING
- 10- 42" H. METAL RAILING
- 11- FIBER CEMENT PANELS
- 12- PLANTER
- 13- PRECAST PANELS OR MASONRY BRICK - TYPE 3
- 14- NON-COMBUSTIBLE SCREEN
- 16- GLASS BLOCK (90 Min. Fire Rated)

① North Elevation DA
 3/32" = 1'-0"

Proposed
 Commercial/Apartment
 Lot N
 Almon & Bloomfield
 Halifax, N.S.

North Elevation

Scale	3/32" = 1'-0"
Date	September 27, 2016
Drawn by	GJ
Checked by	PS

DA4.3

Project number	3022
----------------	------