

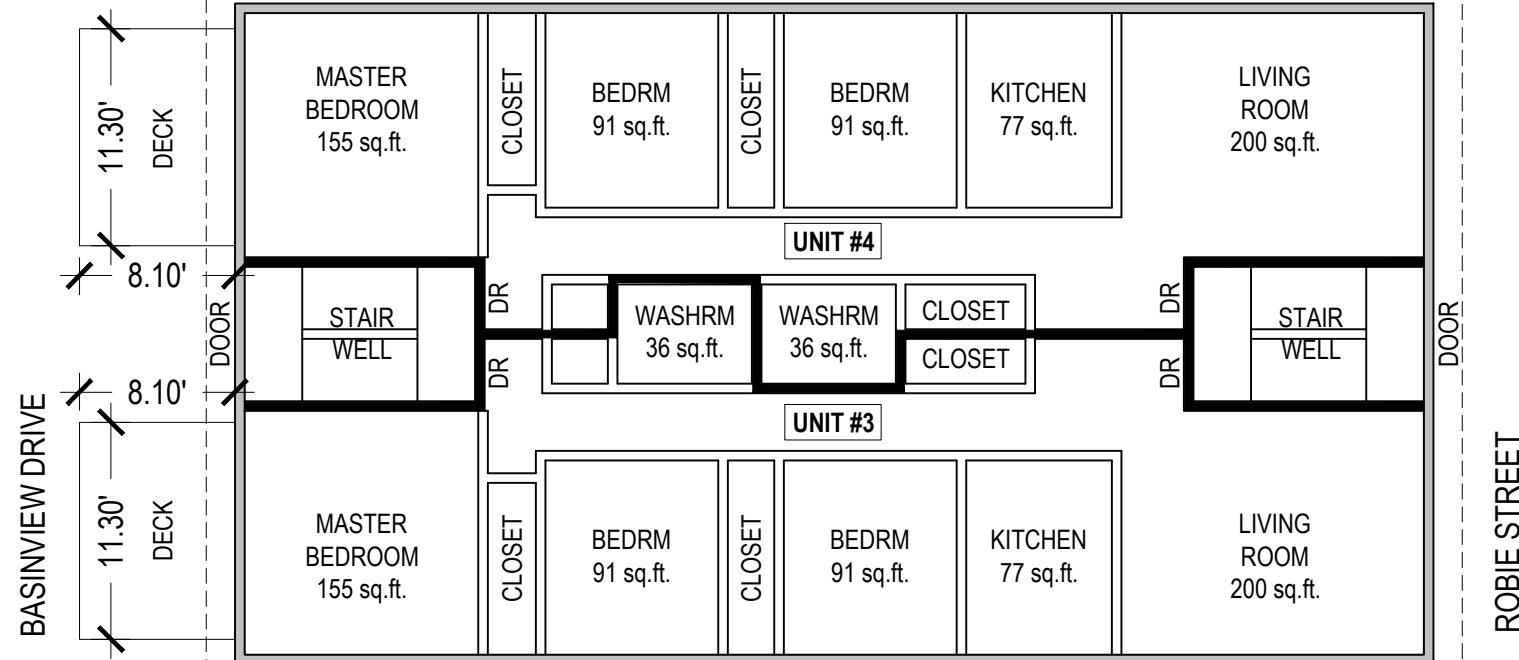
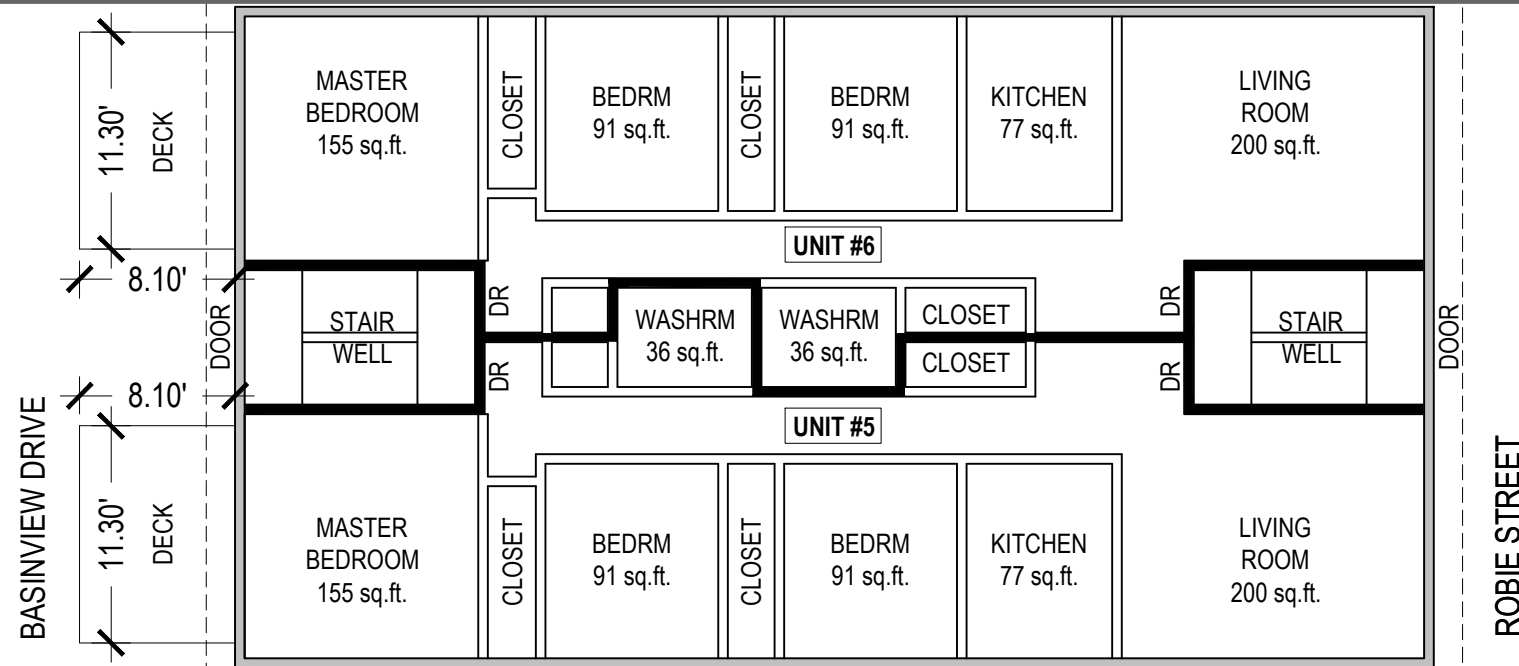


NORTH

2nd FLOOR INFORMATION:
BUILDING FOOTPRINT = 2147.87 sq.ft.
(without decks)

UNIT #6: 3 BEDROOM
INTERIOR AREA = 914.91 sq.ft.

UNIT #5: 3 BEDROOM
INTERIOR AREA = 914.91 sq.ft.



1st FLOOR INFORMATION:
BUILDING FOOTPRINT = 2147.87 sq.ft.
(without decks)

UNIT #4: 3 BEDROOM
INTERIOR AREA = 914.91 sq.ft.

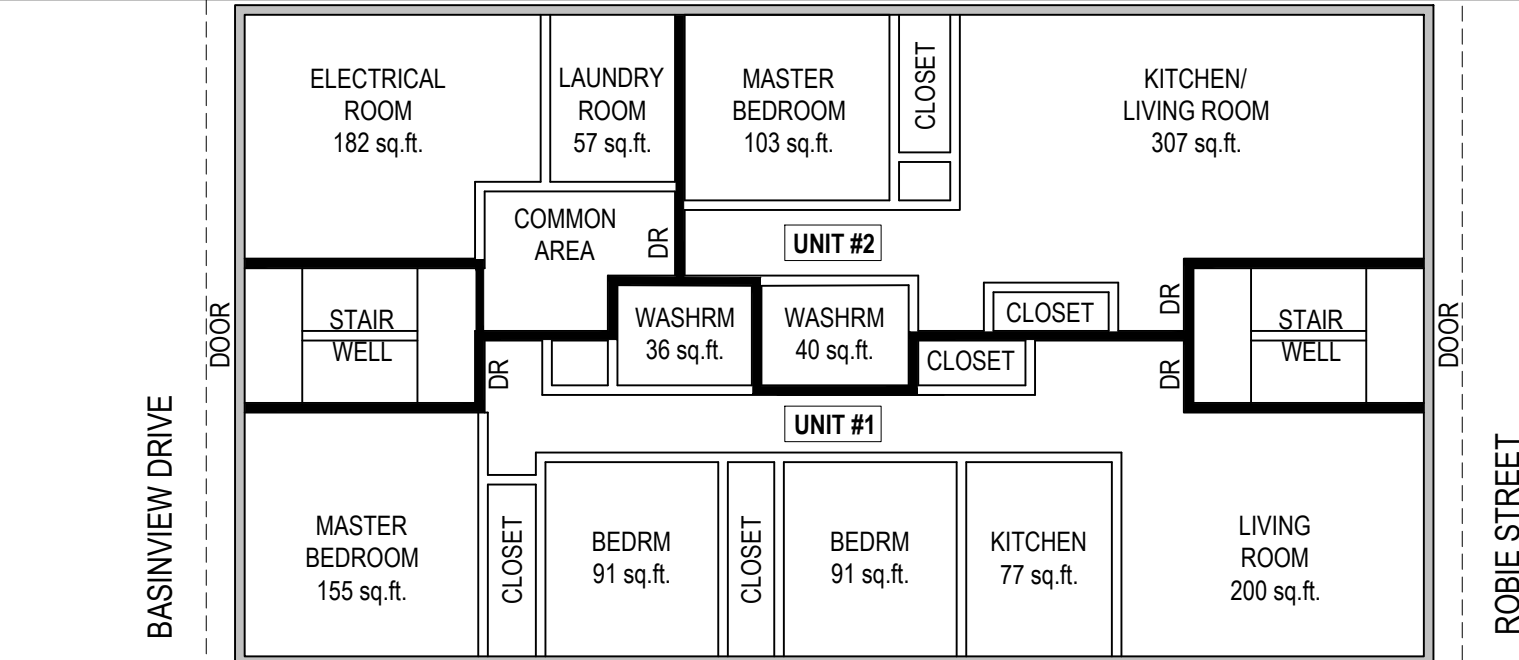
UNIT #3: 3 BEDROOM
INTERIOR AREA = 914.91 sq.ft.

BASEMENT LEVEL INFORMATION:
BUILDING FOOTPRINT = 2147.87 sq.ft.

UNIT #2: 1 BEDROOM
INTERIOR AREA = 605.31 sq.ft.

UNIT #1: 3 BEDROOM
INTERIOR AREA = 909.95 sq.ft.

COMMON AREA:
STAIRS AND UTILITY
AREA = 347.74 sq.ft.



NOTE: NO BUILDING DRAWINGS WERE PROVIDED FOR THE PREPARATION OF THIS DOCUMENT. ALL DIMENSIONS AND AREAS WERE VERIFIED ON SITE.



EKISTICS PLANNING & DESIGN

NOT FOR CONSTRUCTION

NO.	REVISION	DATE

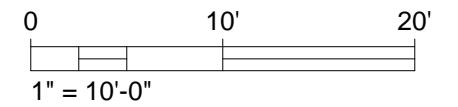
REVISIONS	DATE

A A - Detail No.
B B - Drawing No.

PROJECT
3834 Robie Street

Halifax
Nova Scotia

DRAWING
FLOOR PLANS



SCALE
1"=10'-0"

DATE
2017/10/27

DRAWN BY DJH	CHECKED RTL	REVIEWED
-----------------	----------------	----------

APPROVED RTL	DEPT. APPROVAL
-----------------	----------------

SEAL	SEAL
------	------

DEPT. PROJECT NO.	DRAWING NO.
-------------------	-------------

CONSULTANT'S NO.

TENDER NO.

002