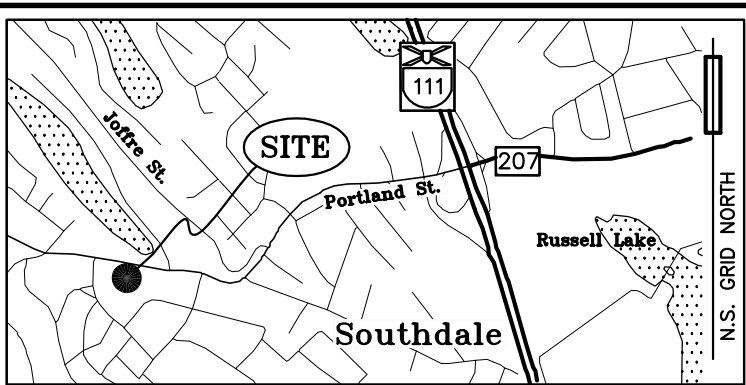


- PLAN REFERENCES:
1. PLAN OF PROPERTY OF MARGARET HUNT, DARTMOUTH, N.S., BEING PART OF THE PRINCE ARTHUR PARK SUBDIVISION AND SHOWN ON THIS PLAN DIVIDED INTO BUILDING LOTS COMPILED FROM PLANS OF SURVEY, DATED FEBRUARY 19, 1916 BY J.G.W. CAMPBELL. REGISTRY No. 59A.
 2. PLAN OF SURVEY SHOWING RE-SUBDIVISION OF LOTS 11, 12 AND 13 TO FORM LOTS VR-X AND VR-Y, MARGARET HUNT SUBDIVISION, LANDS OF TOWER MASONRY CONTRACTORS, PORTLAND STREET, HALIFAX COUNTY. DATED APRIL 10, 1985 BY K.W. ROBB. REGISTRY No. 21928.
 3. PLAN OF SURVEY OF PARCEL 'FDC' A CONSOLIDATION OF LANDS OF FAMILY DRUG CENTRE LIMITED, PORTLAND STREET, HALIFAX COUNTY. DATED MAY 22, 1991 BY FRANK LONGSTAFF. REGISTRY No. 27935.
 4. PLAN SHOWING PARCEL "R", BEING A PORTION OF PRINCE ARTHUR PARK SUBDIVISION OFF RODNEY ROAD, HALIFAX COUNTY. DATED 23 APRIL, 1976 BY DARRYL R. SPIDLE AND FILED WITH THE CITY OF DARTMOUTH ENGINEERING DEPARTMENT UNDER FILE No. 31-656.
- NOTES:
1. ALL LOTS ARE OR CAN BE SERVICED BY EXISTING CENTRAL WATER AND SEWER SYSTEMS.
 2. LOT IDENTIFIERS VR-X-A, 910-C, R-B, AND PARCEL A, PARCEL B AND PARCEL C, ORIGINATE ON THIS PLAN.



KEY PLAN
TOPO MAP NO. 11 D 12
SCALE 1 / 50,000

LEGEND :			
⊙ S.M.	SURVEY MARKER (IRON BAR WITH ID CAP)	⊕	HYDRANT
○ I.B.	IRON BAR	⊗	WATER VALVE
● R.P.	ROCK POST	◇ C.P.	CALCULATED POINT
○ I.P.	IRON PIPE	(C)	CALCULATED
□ T.P.	TRAVERSE POINT	(M)	MEASURED
× M.N.	MAGNETIC NAIL	(P)	PLAN
⊠ W.P.	WOOD POST	FD.	FOUND
△ N.S.C.M.	NOVA SCOTIA CO-ORDINATE MONUMENT	⊕ U.P.	UTILITY POLE
△ N.S.H.P.N.	NOVA SCOTIA HIGH PRECISION NETWORK	R.	RADIUS
△ N.S.A.C.S.	NOVA SCOTIA ACTIVE CONTROL STATION	A.	ARC
L.R.O.	LAND REGISTRATION OFFICE	P.C.	POINT OF CURVATURE
R.O.W.	RIGHT-OF-WAY	P.R.C.	POINT OF REVERSE CURVATURE
225	ROBB, KENNETH W., NSLS	---	FENCE
		---	BOUNDARY CERTIFIED BY THIS PLAN
		---	R.O.W. BOUNDARY

GRID BEARINGS ARE REFERENCED TO THE NOVA SCOTIA 3' MODIFIED TRANSVERSE MERCATOR PROJECTION, ZONE 5, CENTRAL MERIDIAN 64° 30' WEST LONGITUDE. HORIZONTAL REFERENCE FRAME OF NAD83 (CSRS), EPOCH 2010.0

NAD83 (CSRS) CONTROL COORDINATES WERE DERIVED VIA THE NOVA SCOTIA HIGH PRECISION NETWORK. (G.N.S.S. OBSERVATIONS)

DISTANCES SHOWN ON THE PLAN ARE GROUND DISTANCES UNLESS OTHERWISE STATED, MEASURED USING A COMBINATION OF TOTAL STATION AND DERIVED G.N.S.S. GROUND DISTANCES.

THE COMBINED SCALE FACTOR AT THE SITE OF SURVEY IS 0.999963.

VALUES SHOWN ARE UNADJUSTED.

FIELD SURVEYS CARRIED OUT 24 JANUARY, 2018.

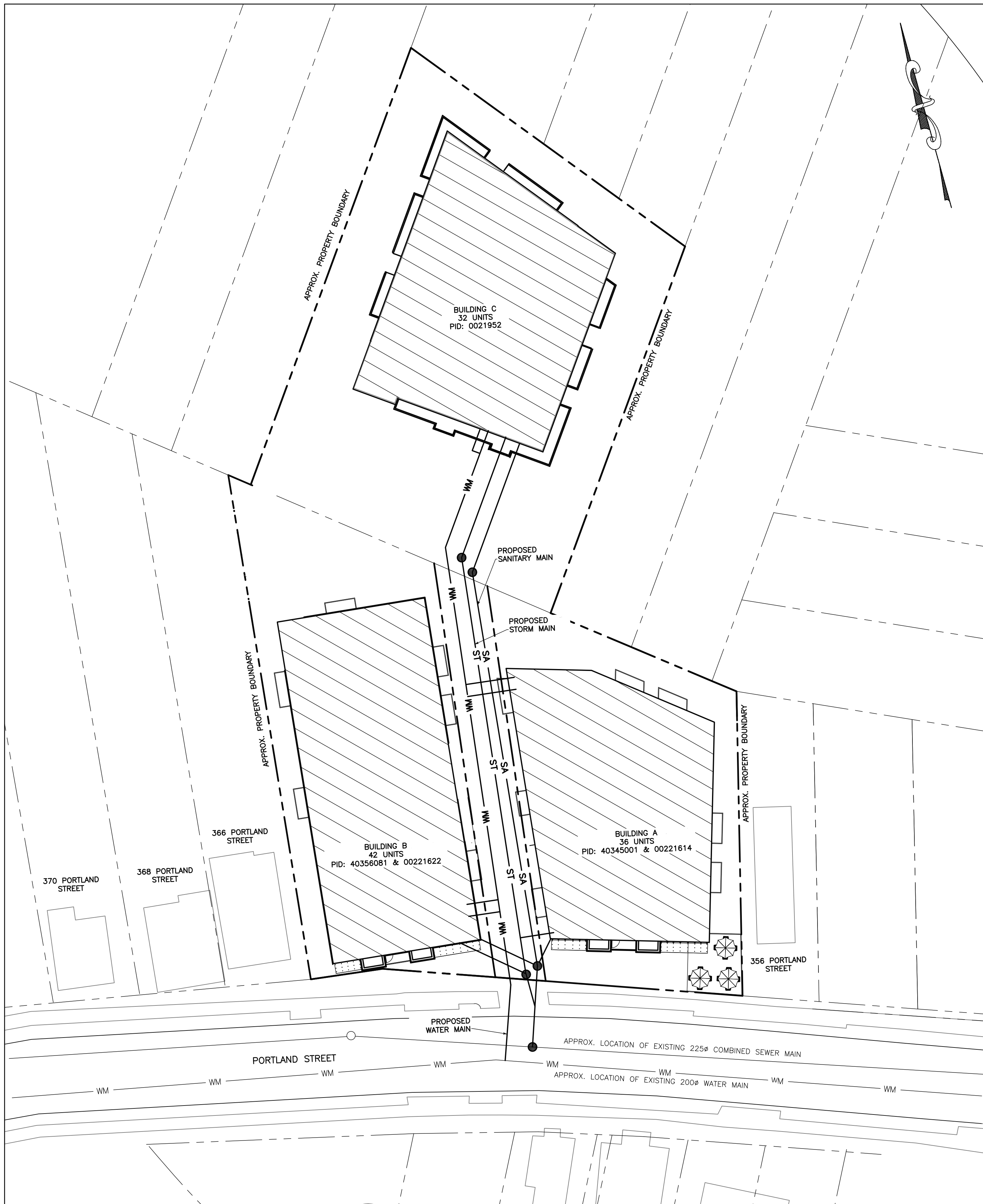
NATURAL FEATURES DERIVED VIA G.N.S.S. OBSERVATIONS.

REV.	DATE

PRELIMINARY PLAN OF SUBDIVISION SHOWING LOTS VR-X-A, 910-C AND R-B, LANDS OF LMNO PROPERTIES LTD., IN SUBDIVISION AND CONSOLIDATION OF LOTS VR-X, VR-Y, 9, 10 AND PARCEL R, AT 36A RODNEY RD., 358, 360, 362 AND 364 PORTLAND STREET, DARTMOUTH, HALIFAX COUNTY, NOVA SCOTIA. P.I.D. 00221622, 40345001, 00221614, 40356081

SCALE	1:400	SURVEYED	ROBERT C. BECKER
DATE	(DD/MM/YY) 06/02/18	PROJ. NAME	C. HALIBURTON
DRN.	E.B.O.	DWG. NO.	180108-00

ABLE ENGINEERING SERVICES INC.
4073 HIGHWAY #3 P.O. BOX 959 CHESTER, NOVA SCOTIA, B0J 1J0
TEL. 1-833-756-8433 FAX: 902-273-3072
Email: surveying@ableinc.ca www.ableinc.ca



SANITARY FLOW CALCULATIONS:

RESIDENTIAL:

BUILDING A: 36 UNITS x 2.25 PEOPLE/UNIT x 300L/PERSON/DAY = 24,300L/DAY

BUILDING B: 43 UNITS x 2.25 PEOPLE/UNIT x 300L/PERSON/DAY = 29,025L/DAY

BUILDING C: 32 UNITS x 2.25 PEOPLE/UNIT x 300L/PERSON/DAY = 21,600L/DAY

TOTAL RESIDENTIAL SANITARY FLOW= 74,925L/DAY

COMMERCIAL:

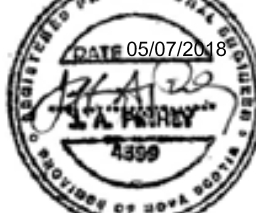

BUILDING A: 308.438 m² x 6L/m² = 1851L/DAY

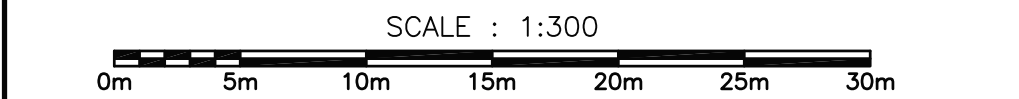
BUILDING B: 280.102 m² x 6L/m² = 1681L/DAY

TOTAL COMMERCIAL SANITARY FLOW= 3,532L/DAY

KEYPLAN		
LEGEND		
EXISTING		PROPOSED
⊗	GATE/BUTTERFLY VALVE	⊗
▼	STREET SIGN	▼
○/○→	POWER POLE/LIGHT POLE	○/⊗
●/■	CATCHBASIN	●/■
⌋	CULVERT	⌋
158.5	ELEVATION	
○	HYDRANT	○
---	PROPERTY BOUNDARY	---
- - -	OVERHEAD LINE	- - -
—SA—□—SA—	SANITARY MANHOLE & PIPE	—SA—■—SA—
—ST—○—ST—	STORM MANHOLE & PIPE	—ST—●—ST—
—WM—WM—	WATERMAIN	—WM—WM—
⊗—WM—	WATER SERVICE	⊗—WM—
—FM—FM—	FORCEMAIN	—FM—FM—
—C—C—	UNDERGROUND CONDUIT	—C—C—
⌋	CONCRETE THRUST BLOCK	⌋
---	CURB AND DRIVEWAY CUT	---
---	SIDEWALK	---
---	STREET LINE	---
→	DRAINAGE DIRECTION	→
→S→	SWALE FLOW	→S→
346	CONTOUR LINES	346
—GAS—GAS—	GAS LINE	—GAS—GAS—
⊙	TREE	⊙
---	BOTTOM OF SLOPE	---
---	TOP OF SLOPE	---
---	GUARD RAIL	---
---	SILT FENCE	—SF—SF—

NOTES:
1. PLAN IS IN METRIC UNITS OF METERS.
2. PROPERTY BOUNDARIES ARE APPROXIMATE ONLY.

1	18/07/05	ISSUED FOR REVIEW			
No.	Date	Revision	Description		Appr'd
Seal					
					
<div>ENGINEERING SERVICES INC</div> <div>50 QUEEN STREET, CHESTER, NS B0J 1J0</div> <div>TEL. 902-273-3050 FAX. 902-273-3072</div> <div>civil@ableinc.ca www.ableinc.ca</div>					



CHANDLER BUILDING PORTLAND STREET DARTMOUTH, NOVA SCOTIA		
PROPOSED DEVELOPMENT AGREEMENT SITE SERVICE PLAN		
Date JULY 4, 2018	Drawn J.HENMAN	Project No.
Scale 1:300	Engineer J.PINHEY	Plan No. C99