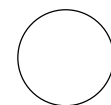


**SCHEDULE C**  
**SOUTH ELEVATION**

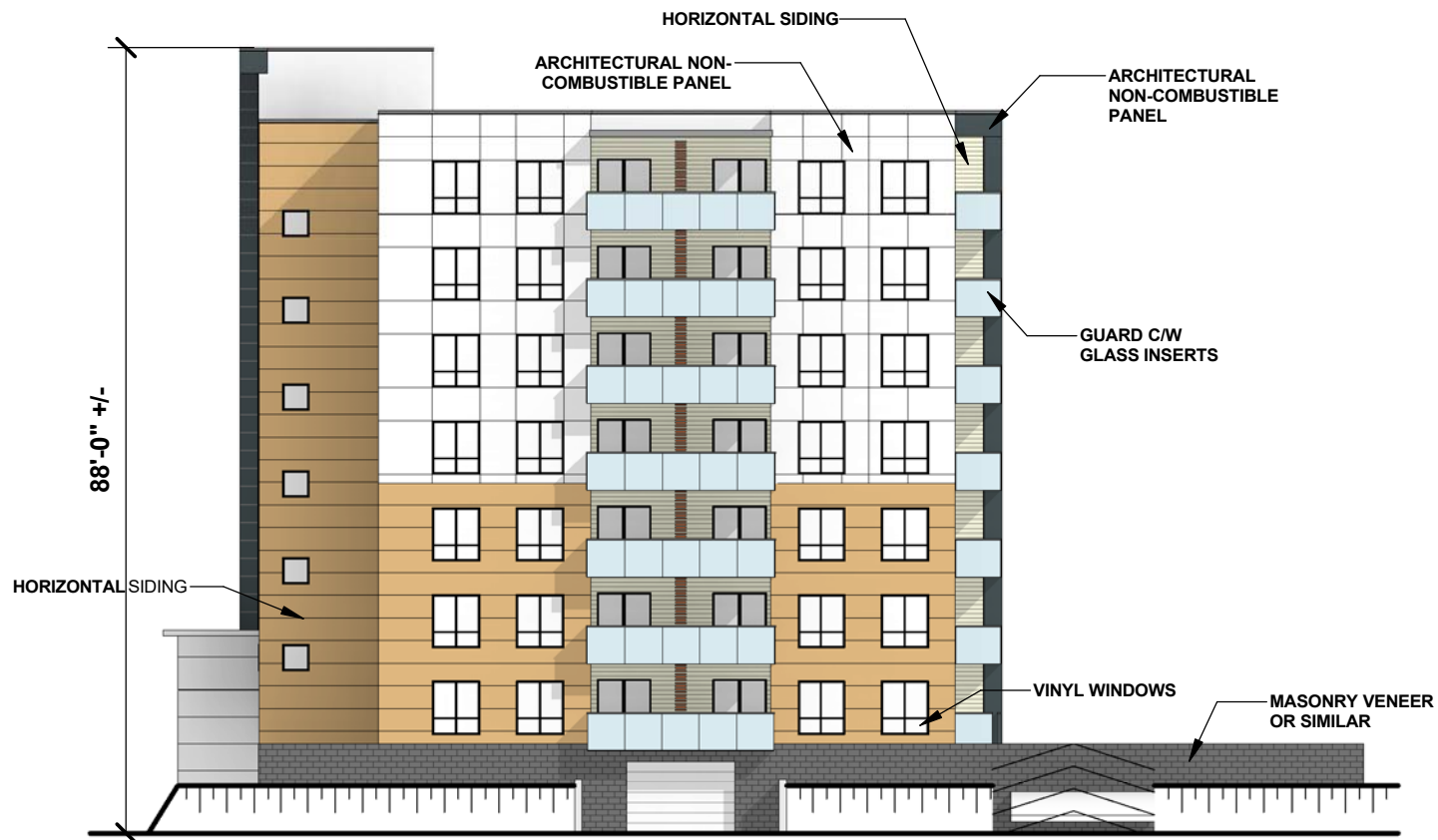
**CASTLE HILL  
ADDITION  
60-70 ARMSTRONG COURT**

Project No: 2017-19  
Scale: 3/64" = 1'-0"  
Date: SEPT 2019



**WM FARES**  
ARCHITECTS

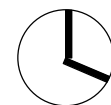
**02**



**SCHEDULE D**  
EAST ELEVATION

**CASTLE HILL  
ADDITION  
60-70 ARMSTRONG COURT**

Project No: 2017-19  
Scale: 3/64" = 1'-0"  
Date: SEPT 2019



**WM FARES**  
ARCHITECTS

**03**