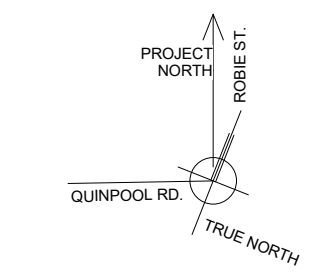




1 01. Basement-1(1)
1 : 100



BASEMENT-1

GeigerHuot
architects

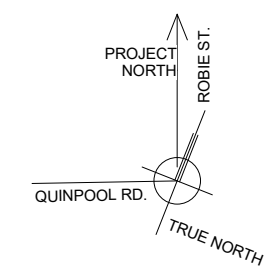
Scale	N.T.S.	Design/Drawn by	AA/AM/AP
Date	24th Oct. 2018	Approved by	E.H.
File number	18031		

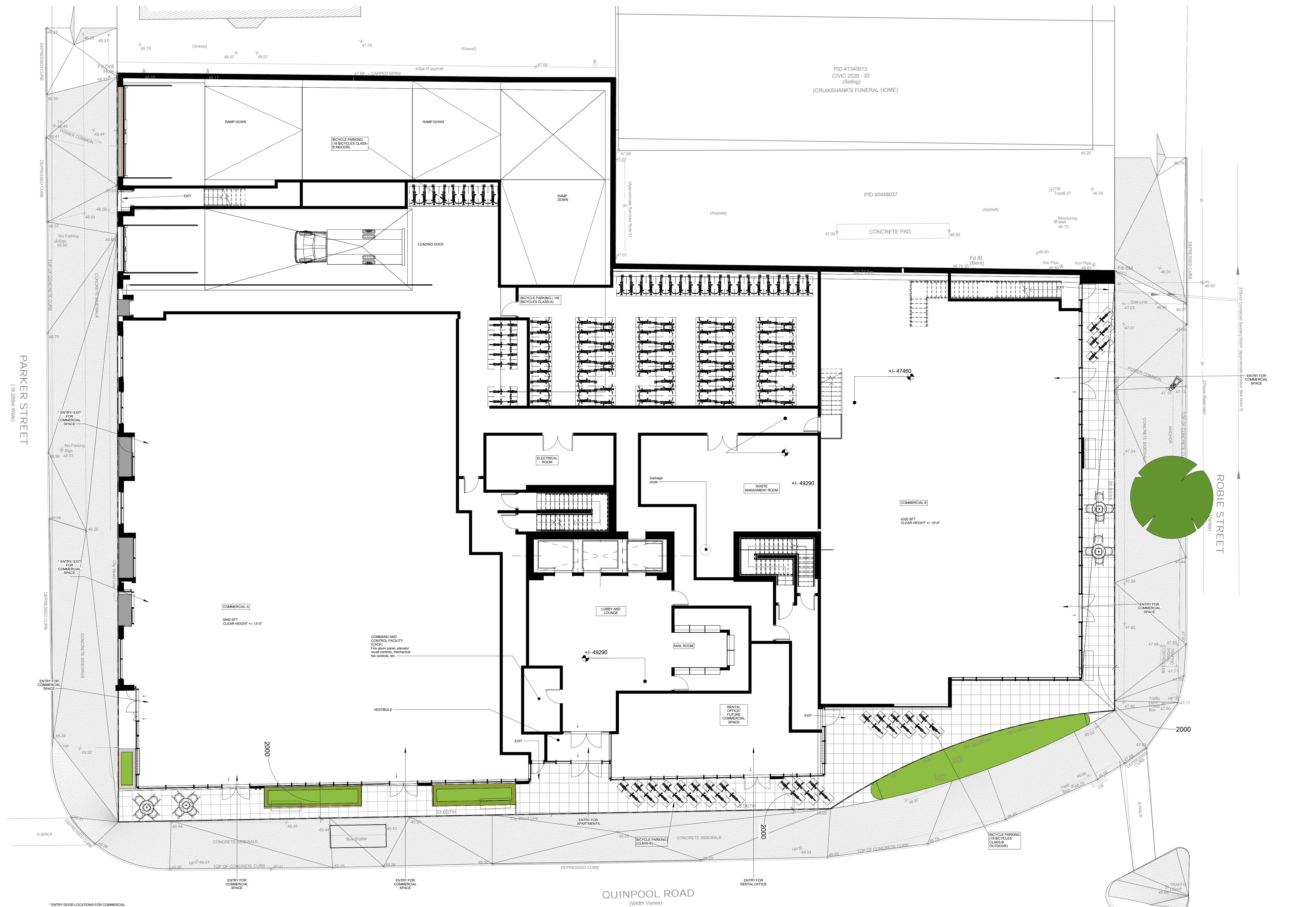
Sheet
AP-100a

11/22/2018 4:41:45 PM



① 02. Basement-2.
1:100





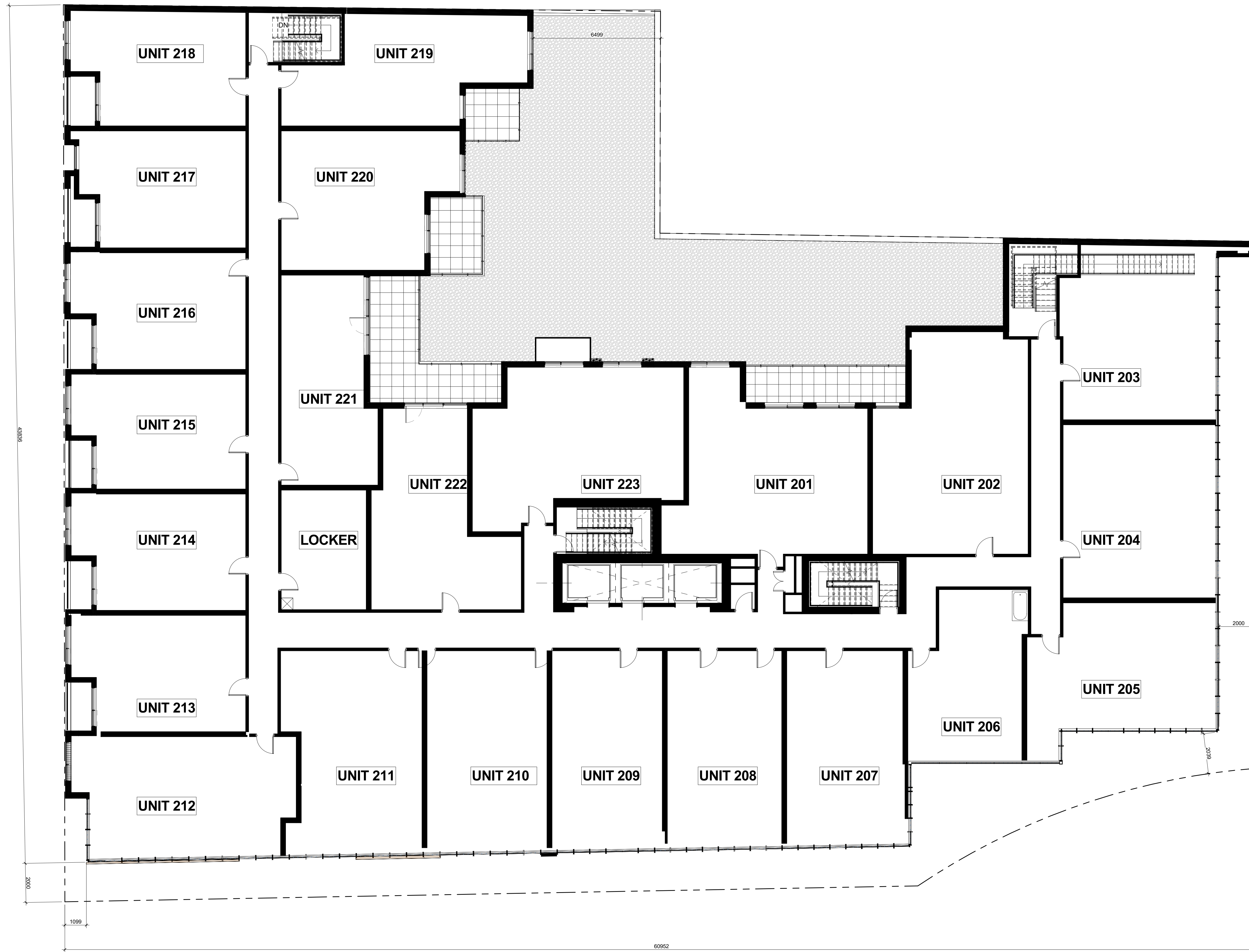
PARKER STREET
(18.288m W46)

ROBIE STREET
(Widths Varies)

QUINPOOL ROAD
(Width Varies)

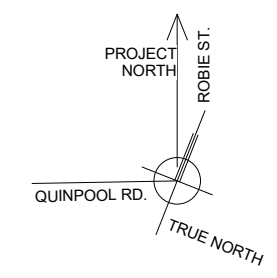
Ground Floor Plan

* ENTRY DOOR LOCATIONS FOR COMMERCIAL SPACE MAY CHANGE, IT WILL DEPEND ON SIZE AND NEED OF THE OWNER.

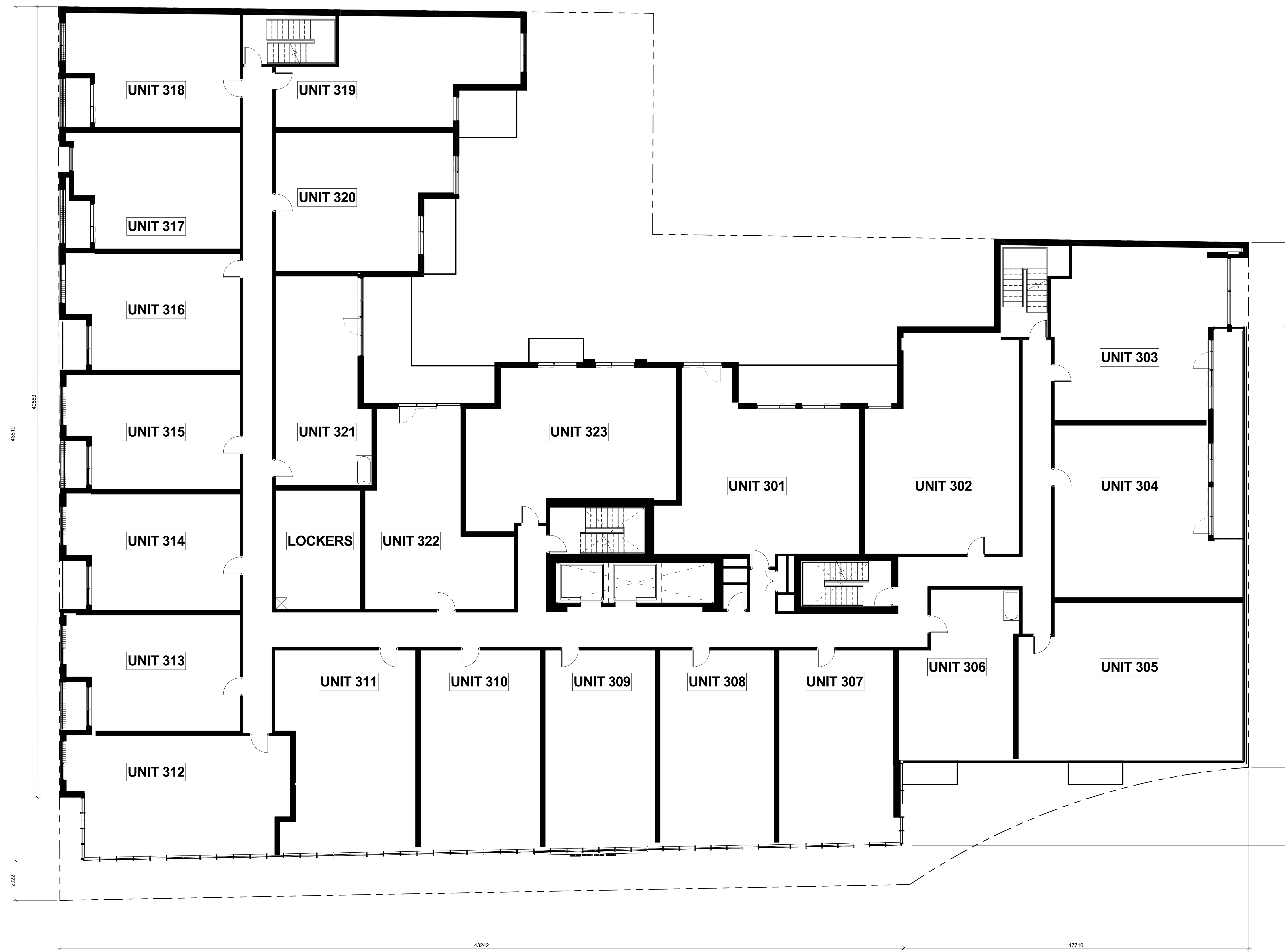


2nd FLOOR - UNIT AREAS			
UNIT	ROOMS	AREA m ²	AREA SF
Unit 201	2	85.94 m ²	925 SF
Unit 202	2	89.10 m ²	959 SF
Unit 203	2	76.10 m ²	819 SF
Unit 204	2	74.20 m ²	799 SF
Unit 205	1	68.02 m ²	732 SF
Unit 206	1	51.91 m ²	559 SF
Unit 207	1	63.09 m ²	679 SF
Unit 208	1	62.35 m ²	671 SF
Unit 209	1	60.84 m ²	655 SF
Unit 210	1	66.67 m ²	718 SF
Unit 211	1	74.01 m ²	797 SF
Unit 212	2	71.32 m ²	768 SF
Unit 213	1	54.28 m ²	584 SF
Unit 214	1	54.26 m ²	584 SF
Unit 215	1	53.22 m ²	573 SF
Unit 216	1	54.64 m ²	588 SF
Unit 217	1	53.84 m ²	579 SF
Unit 218	1	54.17 m ²	583 SF
Unit 219	1	63.62 m ²	685 SF
Unit 220	1	64.07 m ²	690 SF
Unit 221	1	53.60 m ²	577 SF
Unit 222	1	63.91 m ²	688 SF
Unit 223	2	82.74 m ²	891 SF
23		1495.90 m ²	16102 SF

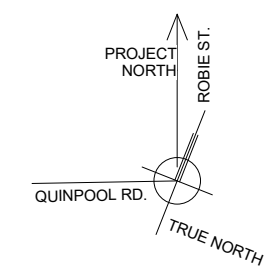
① Level-2(1)
1 : 100

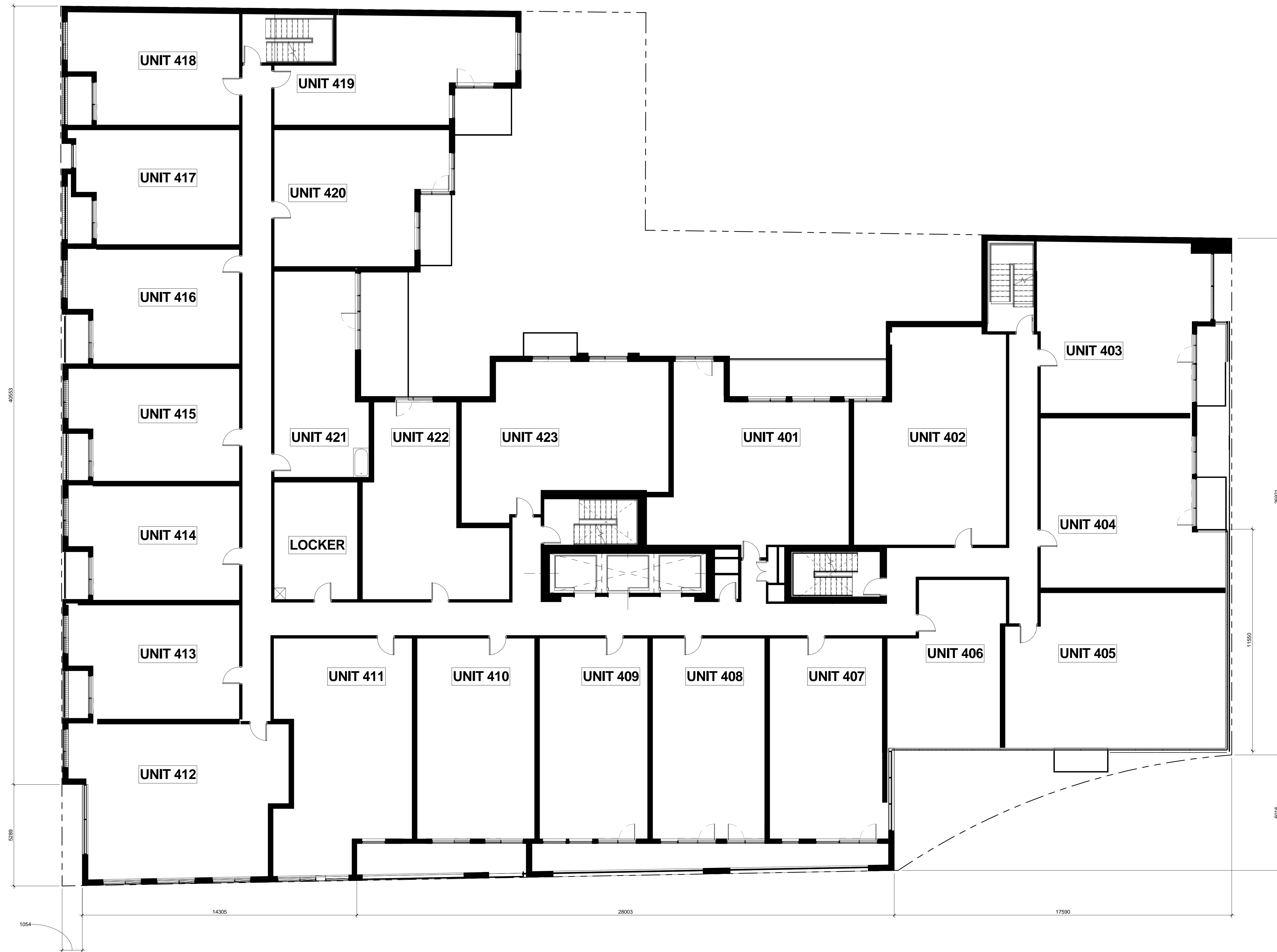


3rd FLOOR - UNIT AREAS			
UNIT	ROOMS	AREA m ²	AREA SF
Unit 301	2	85.98 m ²	925 SF
Unit 302	2	89.10 m ²	959 SF
Unit 303	2	80.02 m ²	861 SF
Unit 304	2	80.51 m ²	867 SF
Unit 305	2	96.99 m ²	1044 SF
Unit 306	1	51.46 m ²	554 SF
Unit 307	1	63.13 m ²	679 SF
Unit 308	1	62.35 m ²	671 SF
Unit 309	1	60.84 m ²	655 SF
Unit 310	1	66.67 m ²	718 SF
Unit 311	1	74.01 m ²	797 SF
Unit 312	2	71.41 m ²	769 SF
Unit 313	1	54.28 m ²	584 SF
Unit 314	1	54.26 m ²	584 SF
Unit 315	1	53.22 m ²	573 SF
Unit 316	1	54.64 m ²	588 SF
Unit 317	1	53.84 m ²	579 SF
Unit 318	1	54.17 m ²	583 SF
Unit 319	1	63.22 m ²	681 SF
Unit 320	1	63.55 m ²	684 SF
Unit 321	1	53.60 m ²	577 SF
Unit 322	1	63.91 m ²	688 SF
Unit 323	2	82.74 m ²	891 SF
23		1533.90 m ²	16511 SF



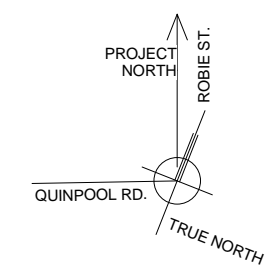
① Level-3(1)
1 : 100

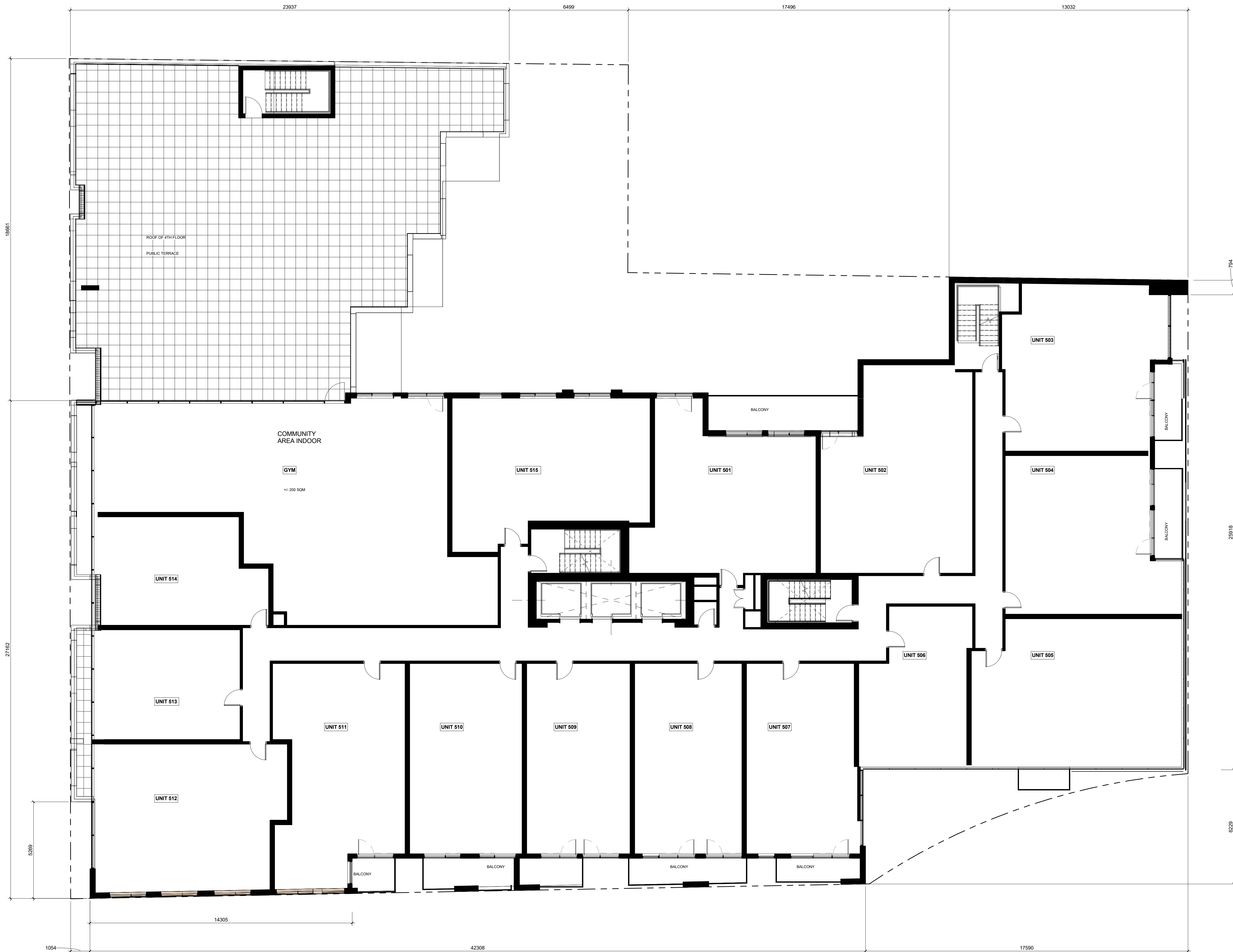




4th FLOOR - UNIT AREAS			
UNIT	ROOMS	AREA m ²	AREA SF
Unit 401	2	85.98 m ²	925 SF
Unit 402	2	89.10 m ²	959 SF
Unit 403	2	80.14 m ²	863 SF
Unit 404	2	80.40 m ²	865 SF
Unit 405	2	96.48 m ²	1039 SF
Unit 406	1	51.48 m ²	554 SF
Unit 407	1	68.29 m ²	735 SF
Unit 408	1	65.67 m ²	707 SF
Unit 409	1	63.38 m ²	682 SF
Unit 410	1	68.70 m ²	739 SF
Unit 411	2	84.30 m ²	907 SF
Unit 412	2	90.84 m ²	978 SF
Unit 413	1	54.28 m ²	584 SF
Unit 414	1	54.26 m ²	584 SF
Unit 415	1	53.22 m ²	573 SF
Unit 416	1	54.64 m ²	588 SF
Unit 417	1	53.84 m ²	579 SF
Unit 418	1	54.76 m ²	589 SF
Unit 419	1	63.62 m ²	685 SF
Unit 420	1	64.07 m ²	690 SF
Unit 421	1	53.60 m ²	577 SF
Unit 422	1	63.86 m ²	687 SF
Unit 423	2	82.80 m ²	891 SF
23		1577.70 m ²	16982 SF

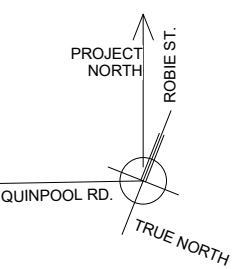
① Level-4(1)
1 : 100

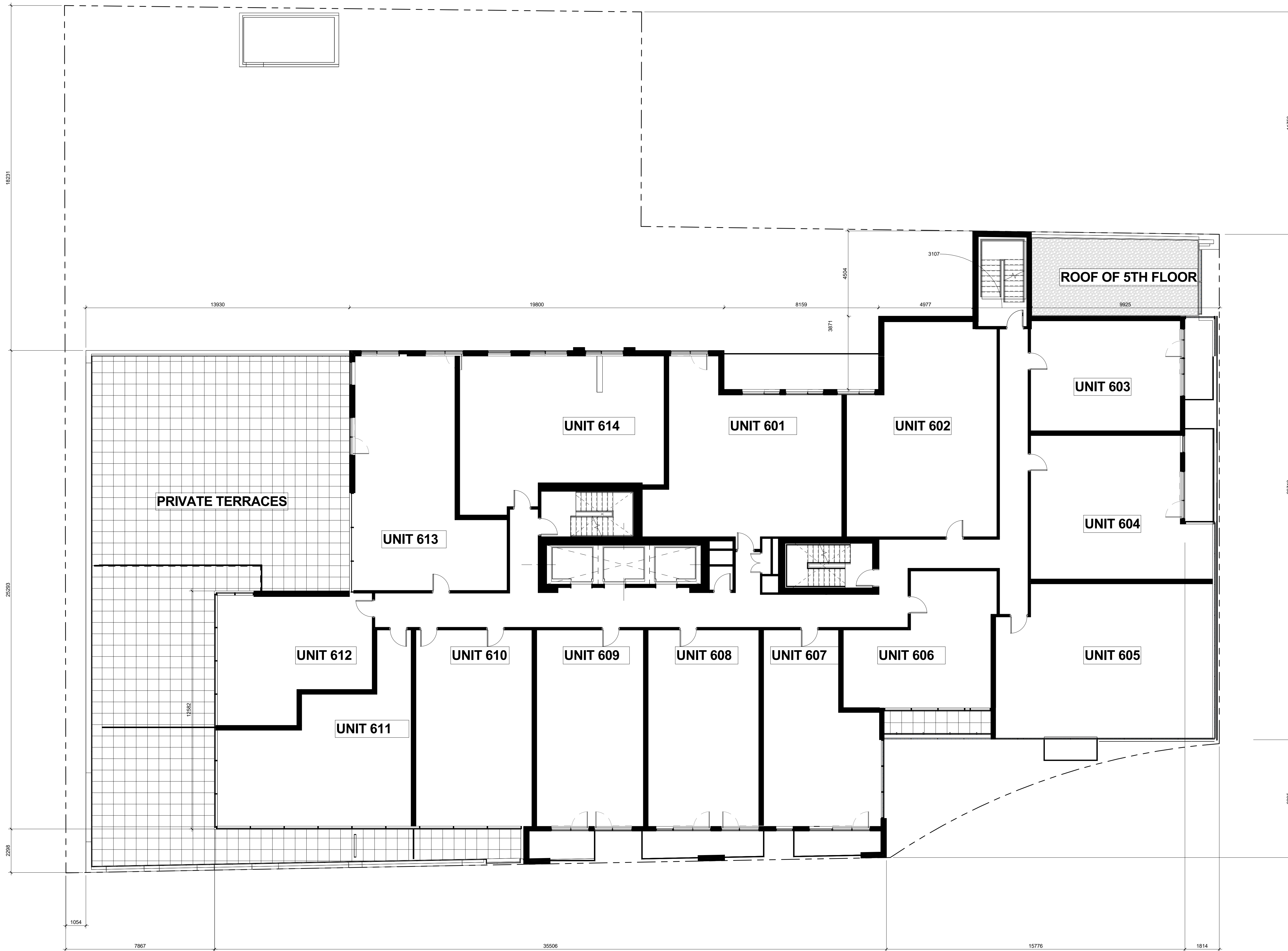




5th FLOOR - UNIT AREAS			
UNIT	ROOMS	AREA m ²	AREA SF
Unit 501	2	83.37 m ²	897 SF
Unit 502	2	91.94 m ²	990 SF
Unit 503	2	82.14 m ²	884 SF
Unit 504	2	78.86 m ²	849 SF
Unit 505	2	94.54 m ²	1018 SF
Unit 506	1	51.21 m ²	551 SF
Unit 507	1	68.37 m ²	736 SF
Unit 508	1	65.73 m ²	707 SF
Unit 509	1	63.44 m ²	683 SF
Unit 510	1	68.76 m ²	740 SF
Unit 511	1	84.20 m ²	906 SF
Unit 512	2	88.34 m ²	951 SF
Unit 513	1	52.10 m ²	561 SF
Unit 514	1	51.51 m ²	554 SF
Unit 515	2	86.11 m ²	927 SF
15		1110.62 m ²	11955 SF

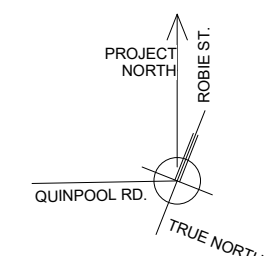
① Level-5(1)
1 : 100





6th FLOOR - UNIT AREAS			
UNIT	ROOMS	AREA m ²	AREA SF
Unit 601	2	84.89 m ²	914 SF
Unit 602	2	89.15 m ²	960 SF
Unit 603	1	51.18 m ²	551 SF
Unit 604	2	70.14 m ²	755 SF
Unit 605	2	94.23 m ²	1014 SF
Unit 606	1	51.06 m ²	550 SF
Unit 607	1	58.39 m ²	628 SF
Unit 608	1	64.22 m ²	691 SF
Unit 609	1	61.98 m ²	667 SF
Unit 610	1	67.18 m ²	723 SF
Unit 611	1	72.53 m ²	781 SF
Unit 612	1	51.92 m ²	559 SF
Unit 613	1	83.90 m ²	903 SF
Unit 614	2	86.10 m ²	927 SF
14		986.85 m ²	10622 SF

① Level-6(1)
1 : 100



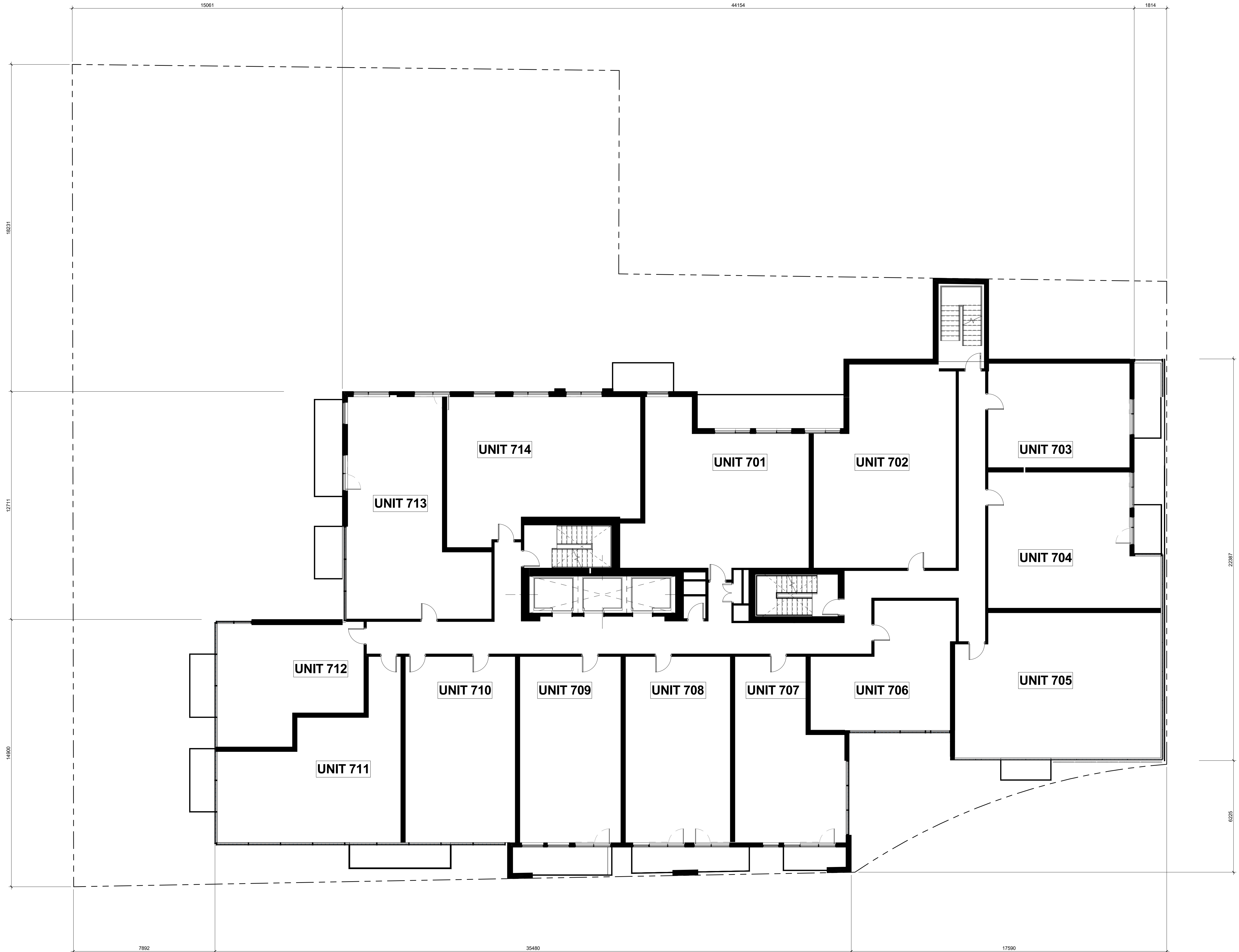
6th FLOOR PLAN

GeigerHuot
GeigerHuot
architects

Scale: N.T.S.
Date: 24th Oct. 2018
File number: 18031

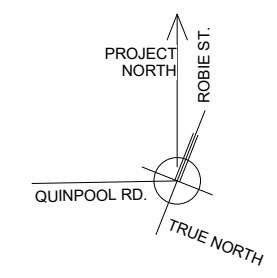
Design/Drawn by: AA/AM/AP
Approved by: E.H.
Sheet: AP-106

11/22/2018 4:43:30 PM

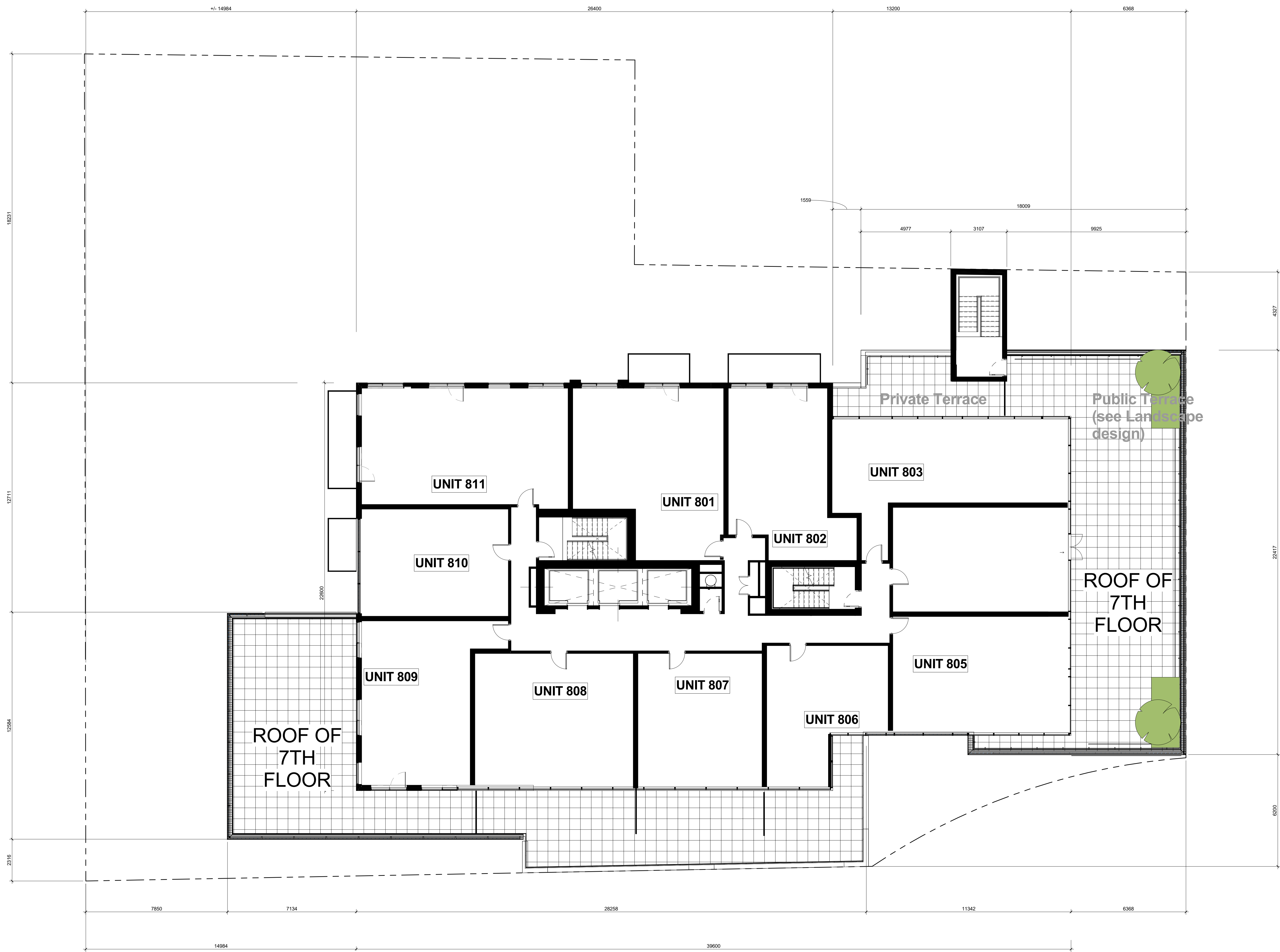


7th FLOOR - UNIT AREAS			
UNIT	ROOMS	AREA m ²	AREA SF
Unit 701	2	84.89 m ²	914 SF
Unit 702	2	89.15 m ²	960 SF
Unit 703	1	51.18 m ²	551 SF
Unit 704	2	70.22 m ²	756 SF
Unit 705	2	94.01 m ²	1012 SF
Unit 706	1	51.07 m ²	550 SF
Unit 707	1	58.61 m ²	631 SF
Unit 708	1	64.46 m ²	694 SF
Unit 709	1	62.22 m ²	670 SF
Unit 710	1	67.44 m ²	726 SF
Unit 711	1	73.56 m ²	792 SF
Unit 712	1	52.34 m ²	563 SF
Unit 713	2	84.20 m ²	906 SF
Unit 714	2	86.10 m ²	927 SF
14		989.44 m ²	10650 SF

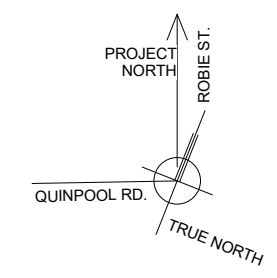
① Level-7(1)
1 : 100

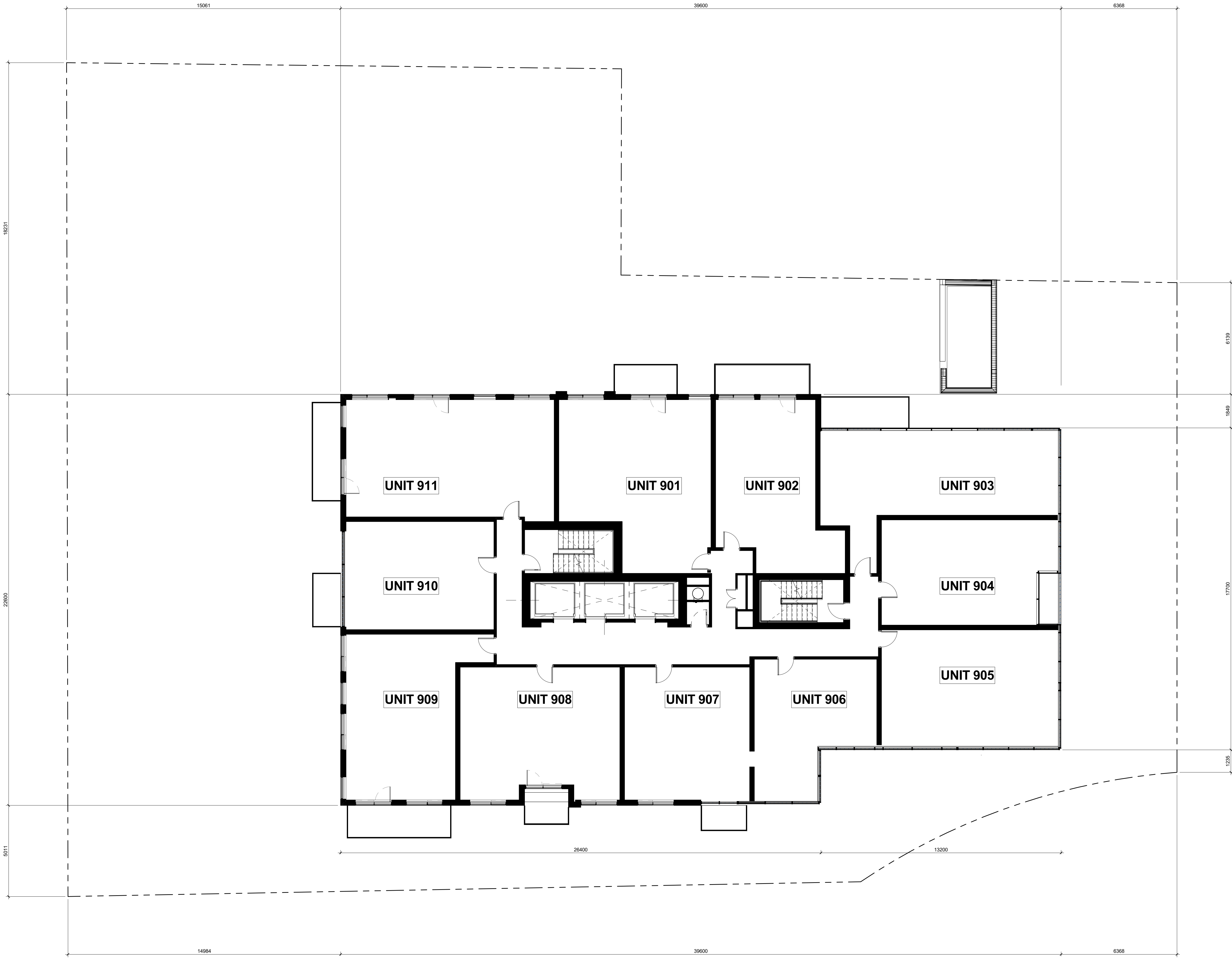


8th FLOOR - UNIT AREAS			
UNIT	ROOMS	AREA m ²	AREA SF
Unit 801	2	77.54 m ²	835 SF
Unit 802	1	57.97 m ²	624 SF
Unit 803	2	71.26 m ²	767 SF
Unit 804	2	65.52 m ²	705 SF
Unit 805	1	47.11 m ²	507 SF
Unit 806	1	55.44 m ²	597 SF
Unit 807	2	70.20 m ²	756 SF
Unit 808	2	64.10 m ²	690 SF
Unit 809	1	54.39 m ²	585 SF
Unit 810	2	82.14 m ²	884 SF
10		645.66 m ²	6950 SF



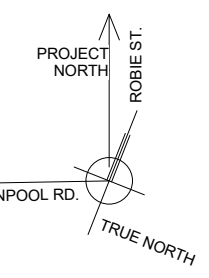
① Level-8(1)
1 : 100



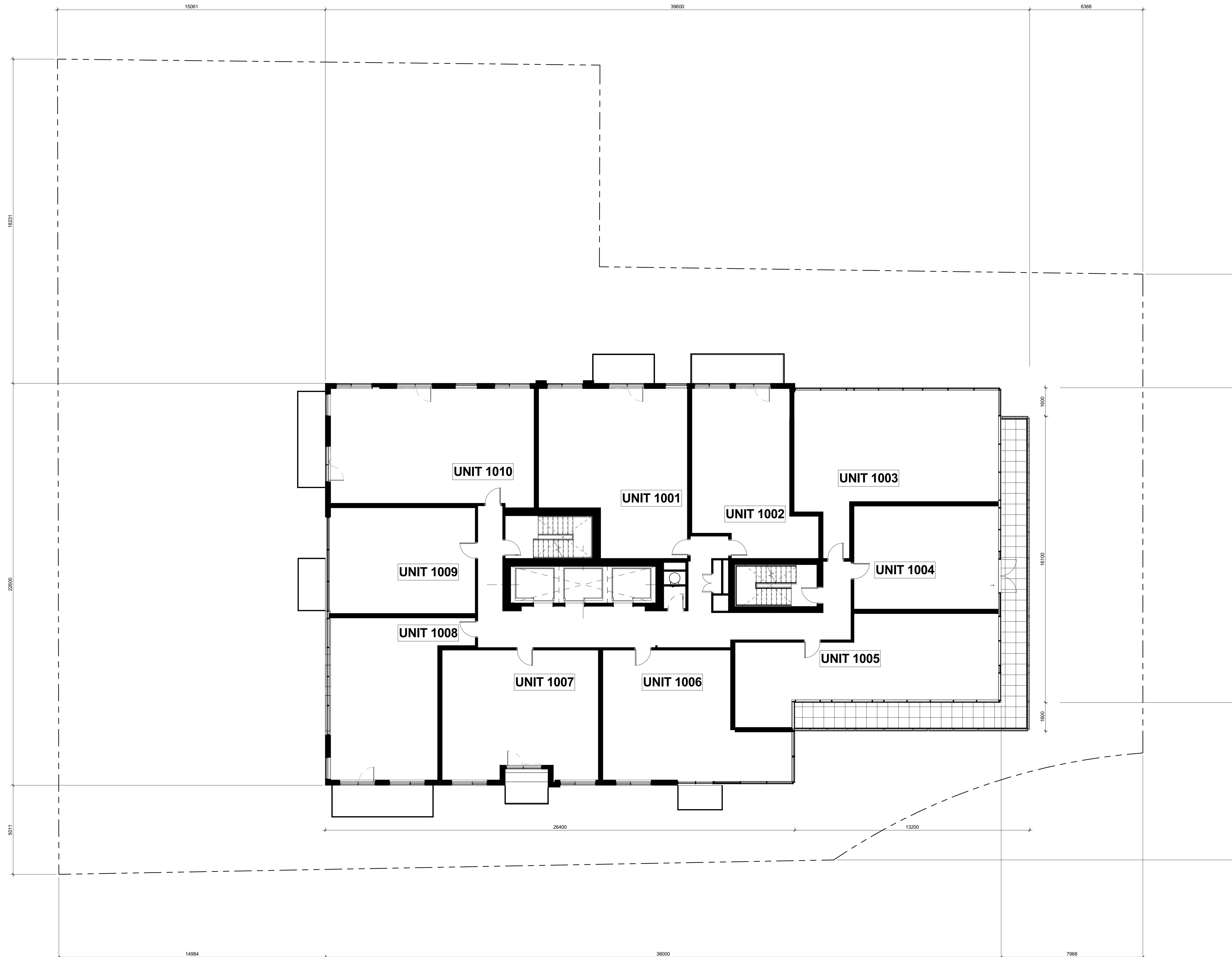


9th FLOOR - UNIT AREAS			
UNIT	ROOMS	AREA m ²	AREA SF
Unit 901	2	77.54 m ²	835 SF
Unit 902	1	57.97 m ²	624 SF
Unit 903	2	71.26 m ²	767 SF
Unit 904	1	57.11 m ²	615 SF
Unit 905	2	65.52 m ²	705 SF
Unit 906	1	47.11 m ²	507 SF
Unit 907	1	55.44 m ²	597 SF
Unit 908	2	68.17 m ²	734 SF
Unit 909	2	64.10 m ²	690 SF
Unit 910	1	54.39 m ²	585 SF
Unit 911	2	82.14 m ²	884 SF
11		700.74 m ²	7543 SF

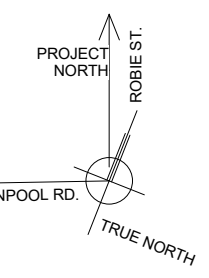
① Level-9(1)
1 : 100



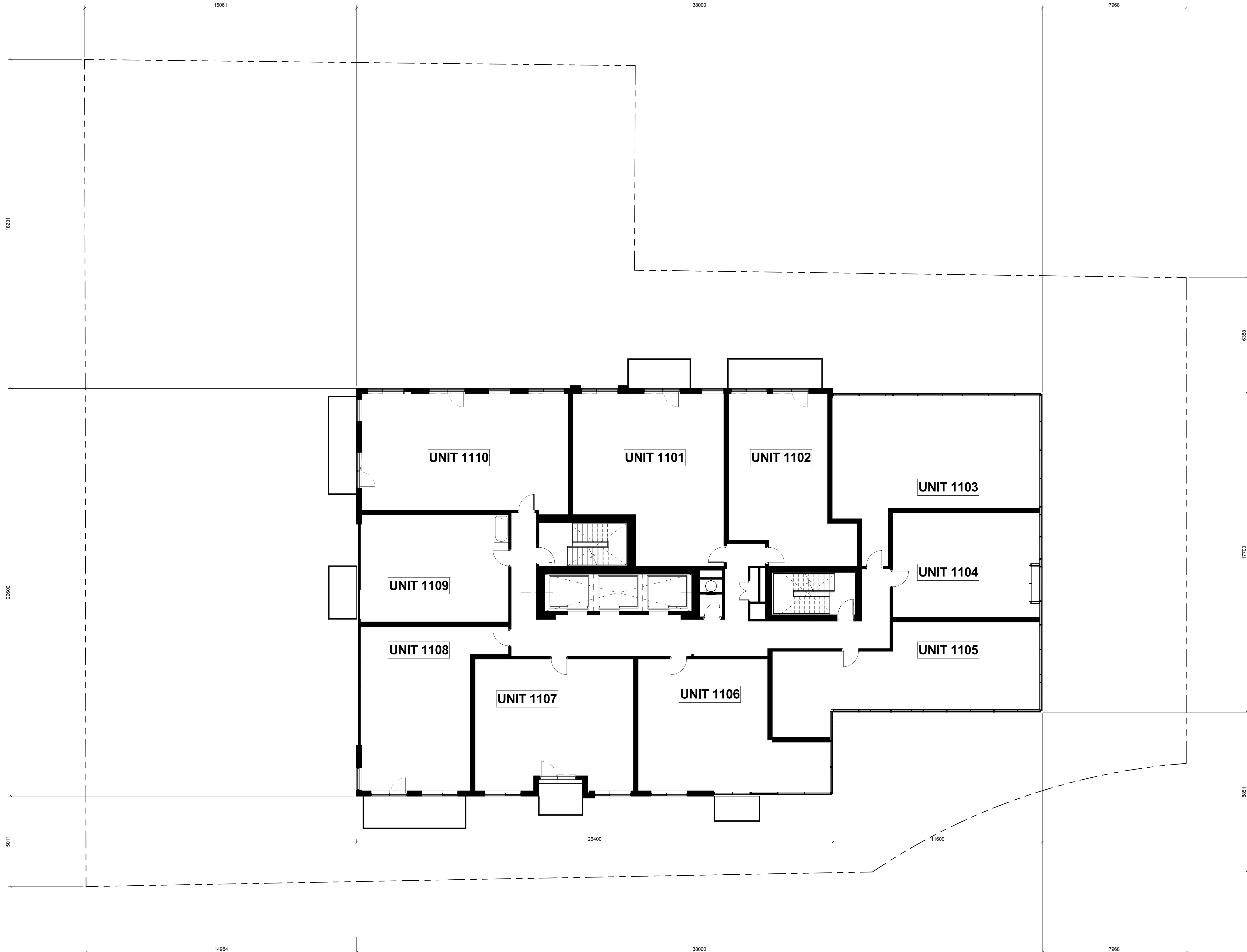
10th FLOOR - UNIT AREAS			
UNIT	ROOMS	AREA m ²	AREA SF
Unit 1001	2	77.56 m ²	835 SF
Unit 1002	1	58.73 m ²	632 SF
Unit 1003	2	82.67 m ²	890 SF
Unit 1004	1	50.60 m ²	545 SF
Unit 1005	2	71.39 m ²	768 SF
Unit 1006	2	68.68 m ²	739 SF
Unit 1007	2	68.00 m ²	732 SF
Unit 1008	2	65.29 m ²	703 SF
Unit 1009	1	53.10 m ²	572 SF
Unit 1010	2	82.14 m ²	884 SF
10		678.17 m ²	7300 SF



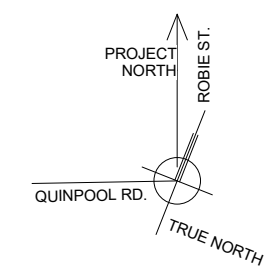
① Level-10(1)
1 : 100

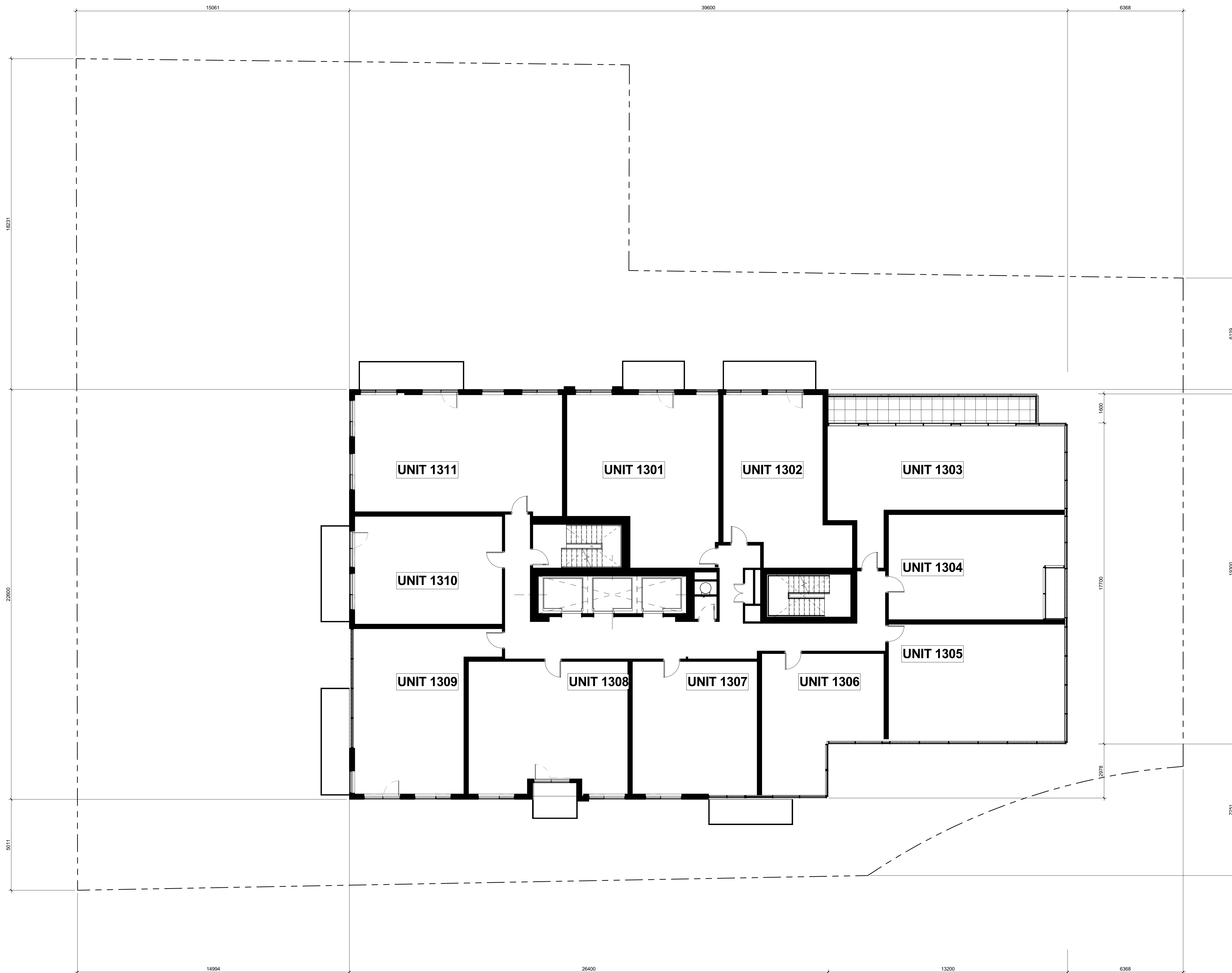


11th,12th , 20th-24th FLOOR - UNIT AREAS			
UNIT	ROOMS	AREA m ²	AREA SF
Unit 1101	2	77.56 m ²	835 SF
Unit 1102	1	58.73 m ²	632 SF
Unit 1103	2	82.67 m ²	890 SF
Unit 1104	1	49.56 m ²	533 SF
Unit 1105	2	71.39 m ²	768 SF
Unit 1106	2	68.68 m ²	739 SF
Unit 1107	2	68.00 m ²	732 SF
Unit 1108	2	65.29 m ²	703 SF
Unit 1109	1	53.10 m ²	572 SF
Unit 1110	2	82.14 m ²	884 SF
10		677.13 m ²	7289 SF



① Level-11(1)
1 : 100

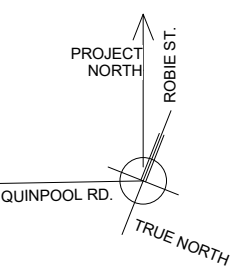




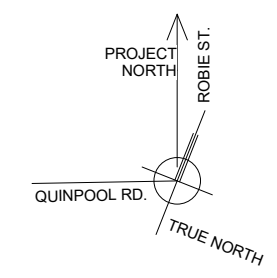
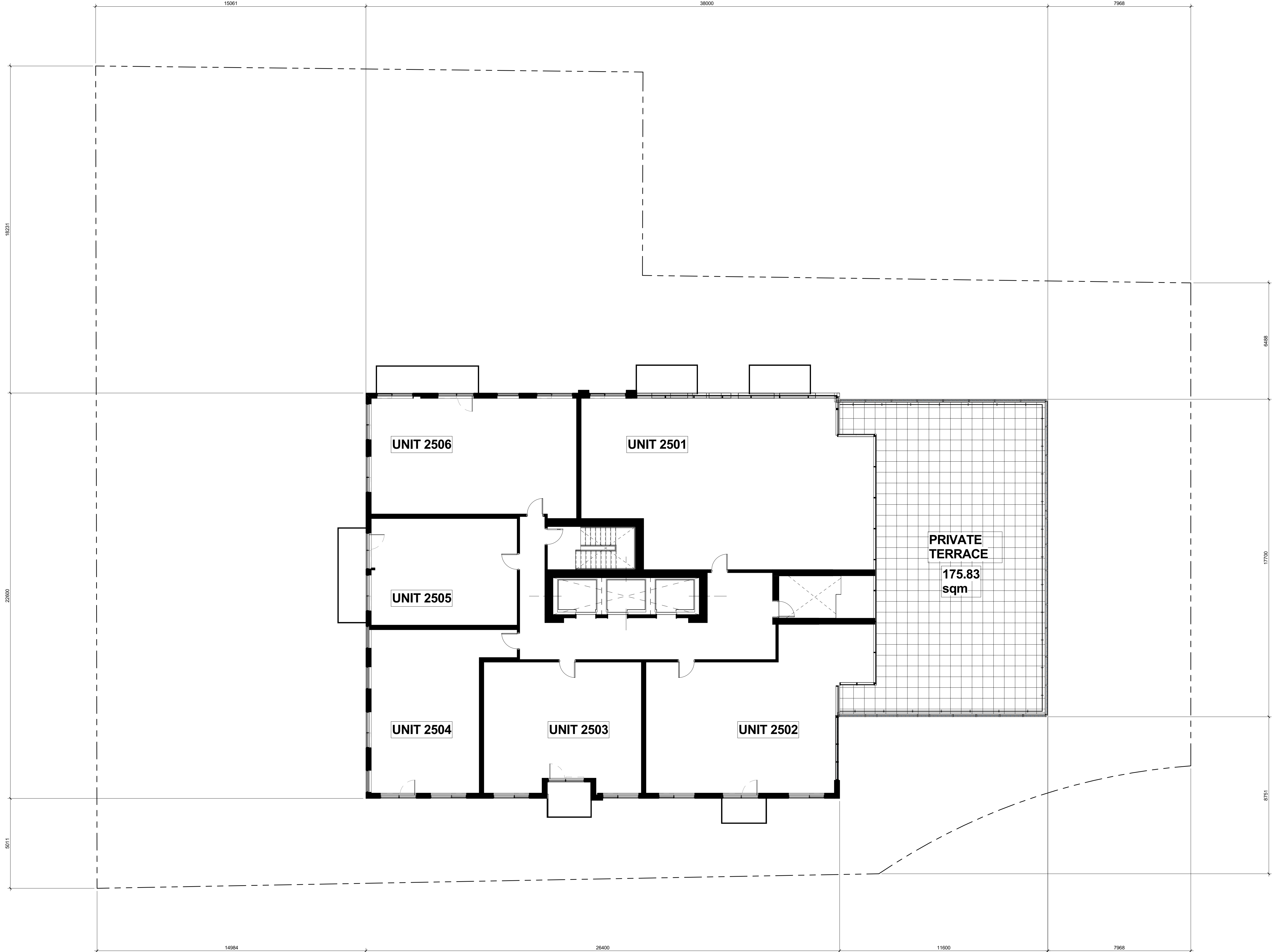
13th FLOOR - UNIT AREAS

UNIT	ROOMS	AREA m ²	AREA SF
Unit 1301	2	77.56 m ²	835 SF
Unit 1302	1	58.73 m ²	632 SF
Unit 1303	2	71.30 m ²	767 SF
Unit 1304	1	56.93 m ²	613 SF
Unit 1305	3	66.81 m ²	719 SF
Unit 1306		47.18 m ²	508 SF
Unit 1307	2	55.28 m ²	595 SF
Unit 1308	2	67.83 m ²	730 SF
Unit 1309	2	65.29 m ²	703 SF
Unit 1310	1	53.10 m ²	572 SF
Unit 1311	2	82.14 m ²	884 SF
11		702.15 m ²	7558 SF

① Level-13(1)
1 : 100

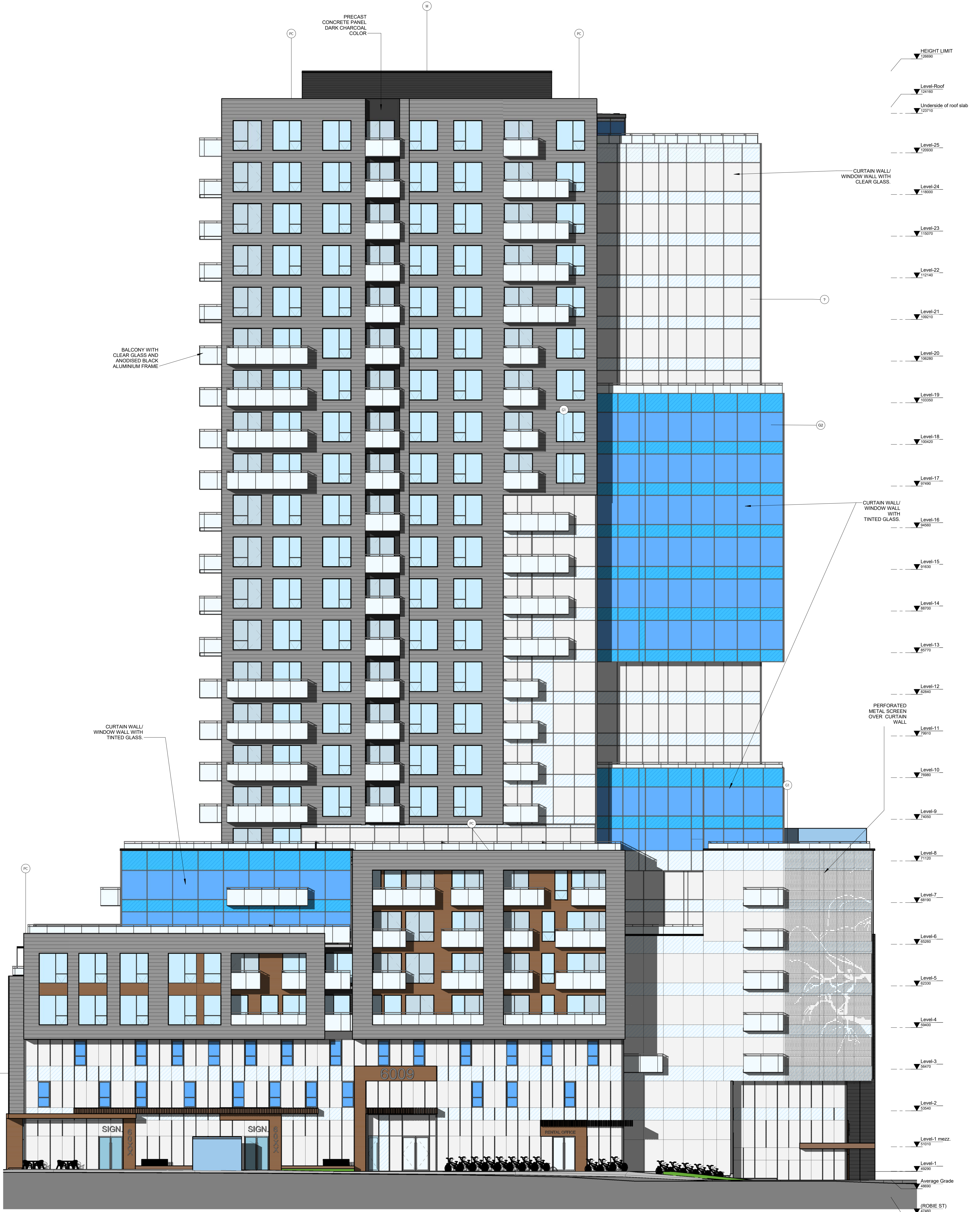


25th FLOOR - UNIT AREAS			
UNIT	ROOMS	AREA m ²	AREA SF
Unit 2501	3	151.31 m ²	1629 SF
Unit 2502	2	98.71 m ²	1062 SF
Unit 2503	2	67.32 m ²	725 SF
Unit 2504	2	65.30 m ²	703 SF
Unit 2505	1	53.25 m ²	573 SF
Unit 2506	2	82.70 m ²	890 SF
6		518.59 m ²	5582 SF



PC	PRECAST CONCRETE - LIGHT GREY WITH HORIZONTAL LINES	W	COMPOSITE WOOD PANEL OR EQUIVALENT - COLOR COPPER
PC1	PRECAST CONCRETE - COLOR #1	PM	PERFORATED METAL PANEL
MS1	METAL SIDING - COLOR #1	MS4	METAL SIDING - DARK CHARCOAL GREY
PC2	PRECAST CONCRETE - COLOR #2	G1	GLASS (CURTAIN WALL / WINDOW WALL) - COLOR #1 TRANSPARENT
MS2	METAL SIDING - COLOR #2	G2	GLASS (CURTAIN WALL / WINDOW WALL) - COLOR #2
PC3	PRECAST CONCRETE - COLOR #3		
MS3	METAL SIDING - COLOR #3		

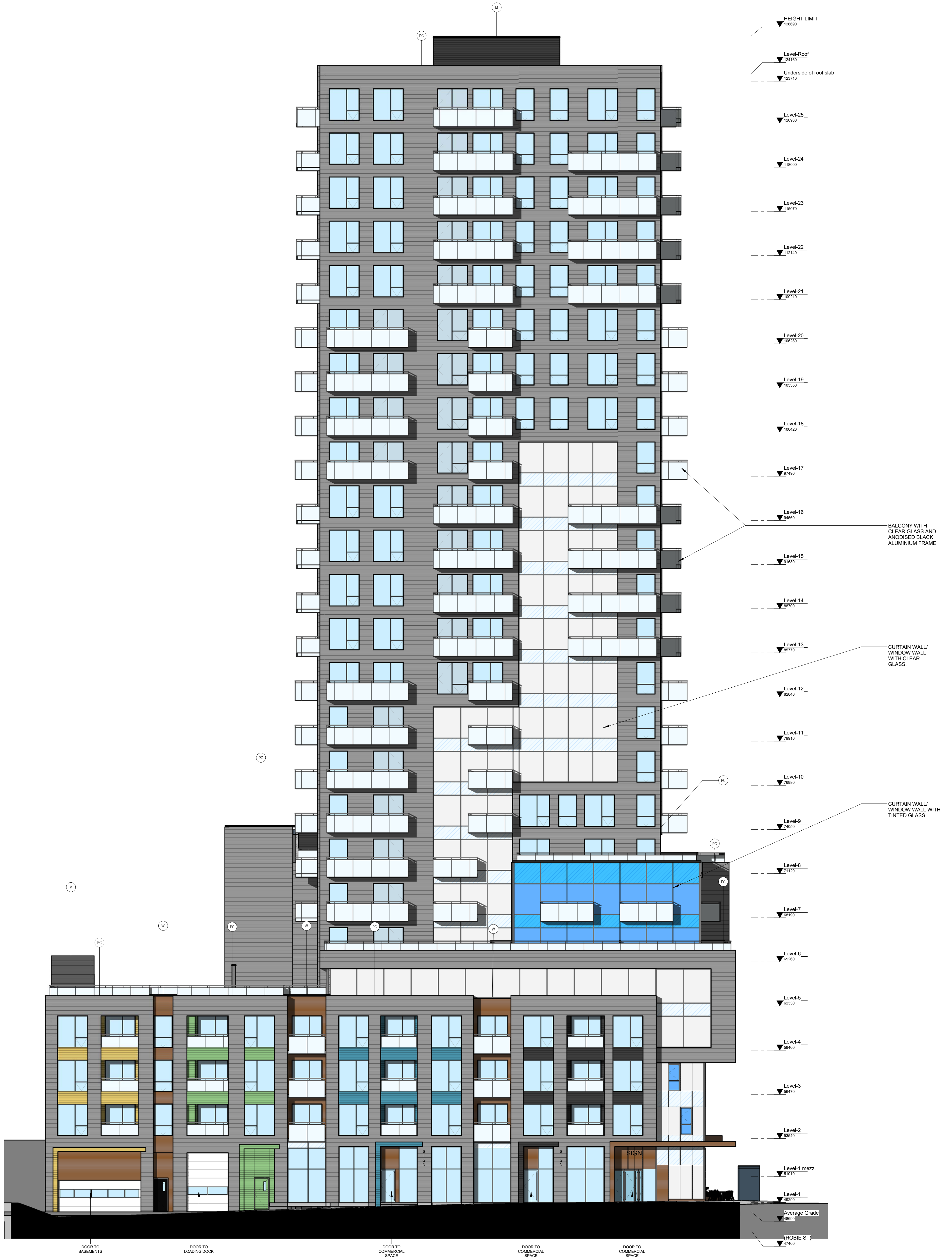
MATERIAL LEGEND
1 : 50



① Presentation Elevation Quinpool St
1 : 125

- PC PRECAST CONCRETE - LIGHT GREY WITH HORIZONTAL LINES
- PC1 PRECAST CONCRETE - COLOR #1
- MS1 METAL SIDING - COLOR #1
- PC2 PRECAST CONCRETE - COLOR #2
- MS2 METAL SIDING - COLOR #2
- PC3 PRECAST CONCRETE - COLOR #3
- MS3 METAL SIDING - COLOR #3
- W COMPOSITE WOOD PANEL OR EQUIVALENT - COLOR COPPER
- PM PERFORATED METAL PANEL
- MS4 METAL SIDING - DARK CHARCOAL GREY
- G1 GLASS (CURTAIN WALL / WINDOW WALL) - COLOR #1 TRANSPARENT
- G2 GLASS (CURTAIN WALL / WINDOW WALL) - COLOR #2

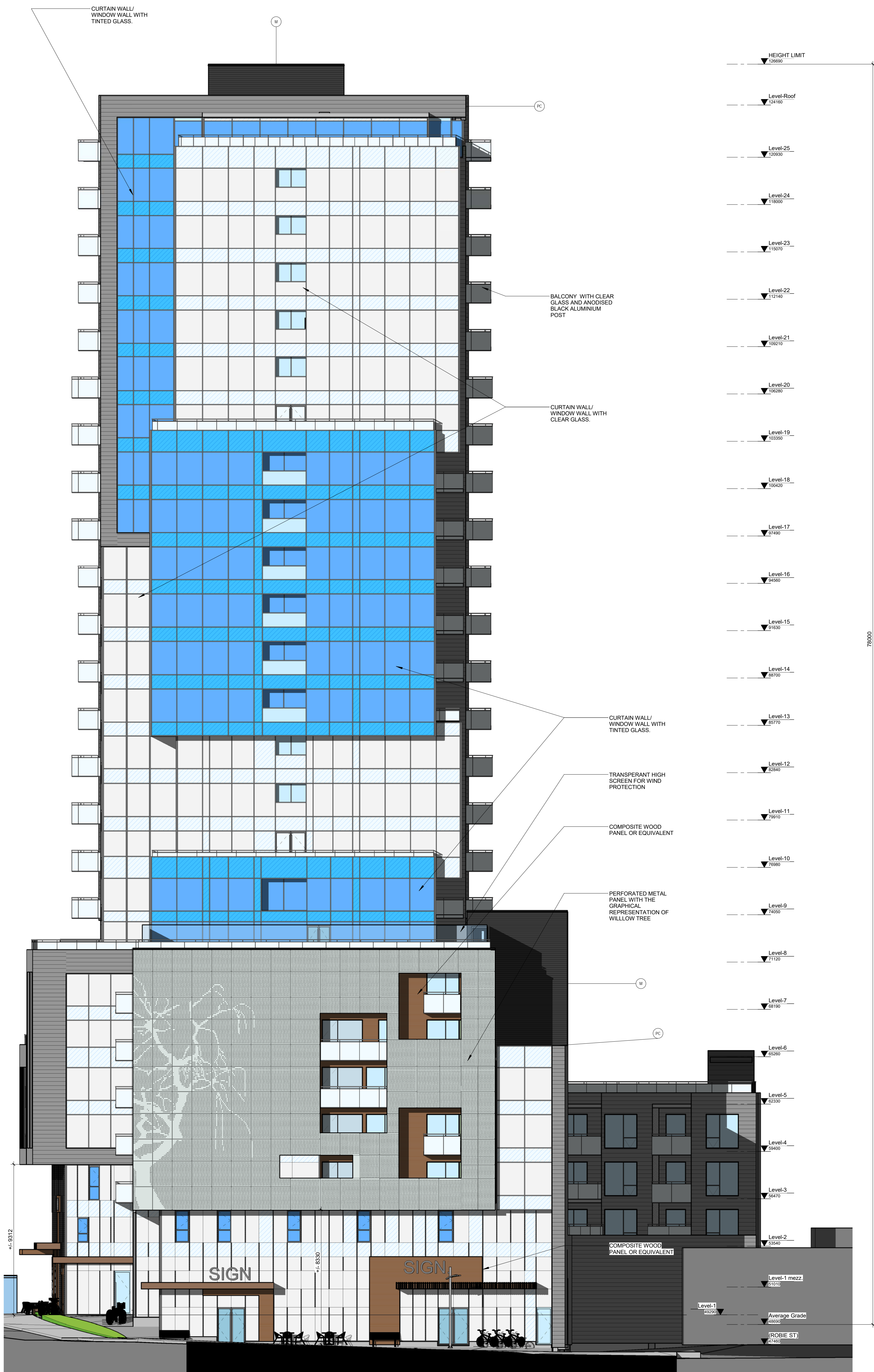
MATERIAL LEGEND
1 : 50



1 Presentation Elevation Parker St.
1 : 125

- PC PRECAST CONCRETE - LIGHT GREY WITH HORIZONTAL LINES
- PC1 PRECAST CONCRETE - COLOUR #1
- MS1 METAL SIDING - COLOUR #1
- PC2 PRECAST CONCRETE - COLOUR #2
- MS2 METAL SIDING - COLOUR #2
- PC3 PRECAST CONCRETE - COLOUR #3
- MS3 METAL SIDING - COLOUR #3
- W COMPOSITE WOOD PANEL OR EQUIVALENT - COLOR COPPER
- PM PERFORATED METAL PANEL
- MS4 METAL SIDING - DARK CHARCOAL GREY
- G1 GLASS (CURTAIN WALL / WINDOW WALL) - COLOR #1 TRANSPARENT
- G2 GLASS (CURTAIN WALL / WINDOW WALL) - COLOR #2

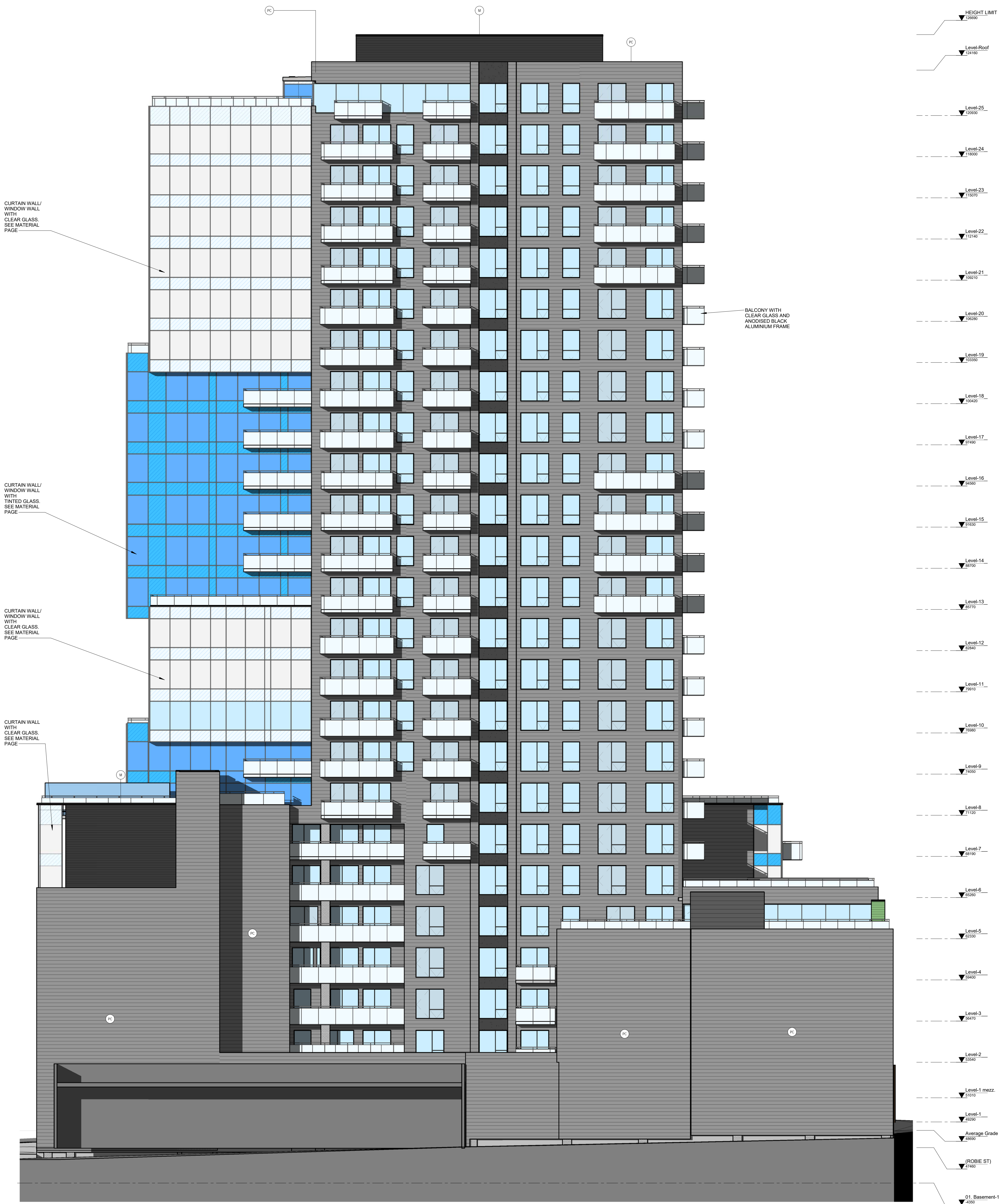
MATERIAL LEGEND
1 : 50



1 Presentation Elevation Robie St.
1 : 125

- PC PRECAST CONCRETE - LIGHT GREY WITH HORIZONTAL LINES
- PC1 PRECAST CONCRETE - COLOUR #1
- M1 METAL SIDING - COLOUR #1
- PC2 PRECAST CONCRETE - COLOUR #2
- M2 METAL SIDING - COLOUR #2
- PC3 PRECAST CONCRETE - COLOUR #3
- M3 METAL SIDING - COLOUR #3
- W COMPOSITE WOOD PANEL OR EQUIVALENT - COLOR COPPER
- PM PERFORATED METAL PANEL
- M54 METAL SIDING- DARK CHARCOAL GREY
- G1 GLASS (CURTAIN WALL / WINDOW WALL) - COLOR #1 TRANSPARENT
- G2 GLASS (CURTAIN WALL / WINDOW WALL) - COLOR #2

MATERIAL LEGEND
1 : 50



1 Presentation Elevation rear
1 : 125