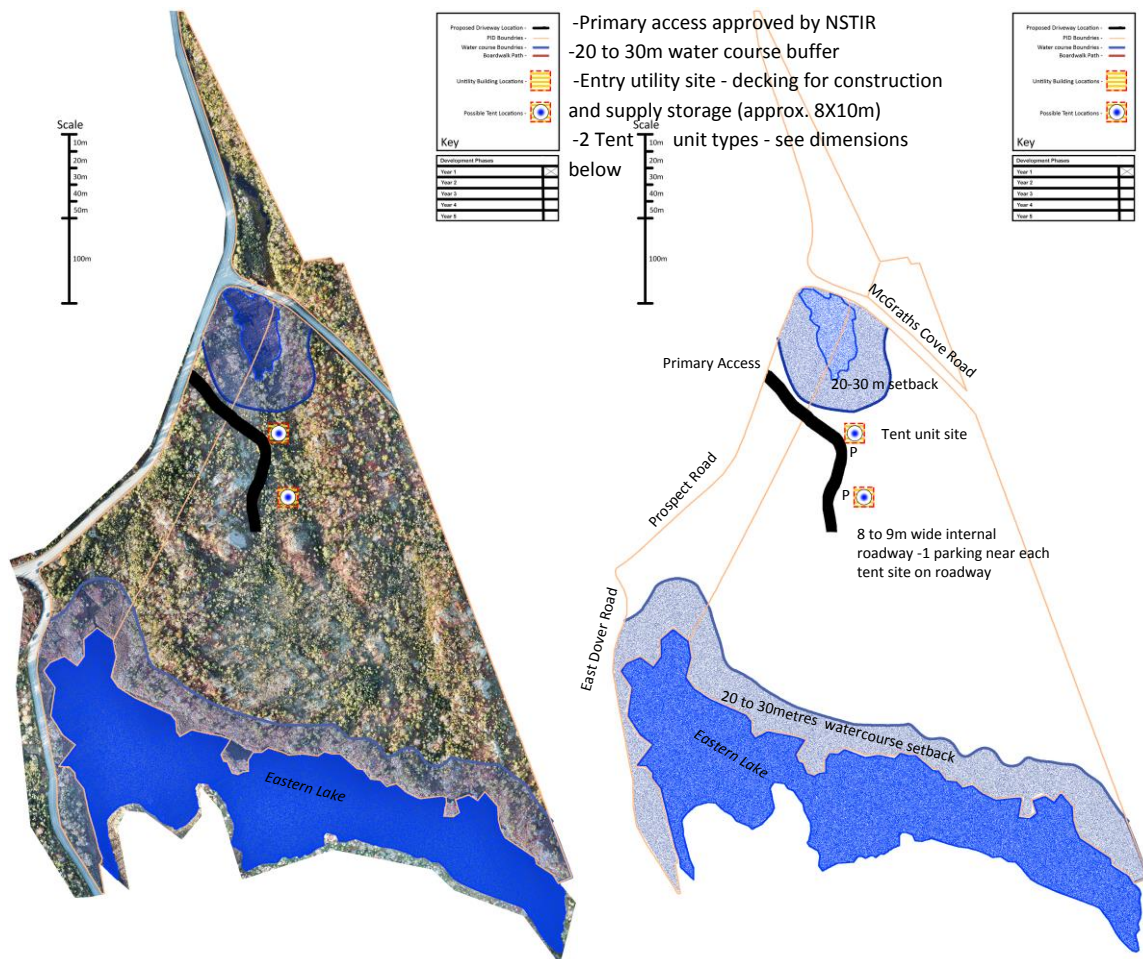


Year 1



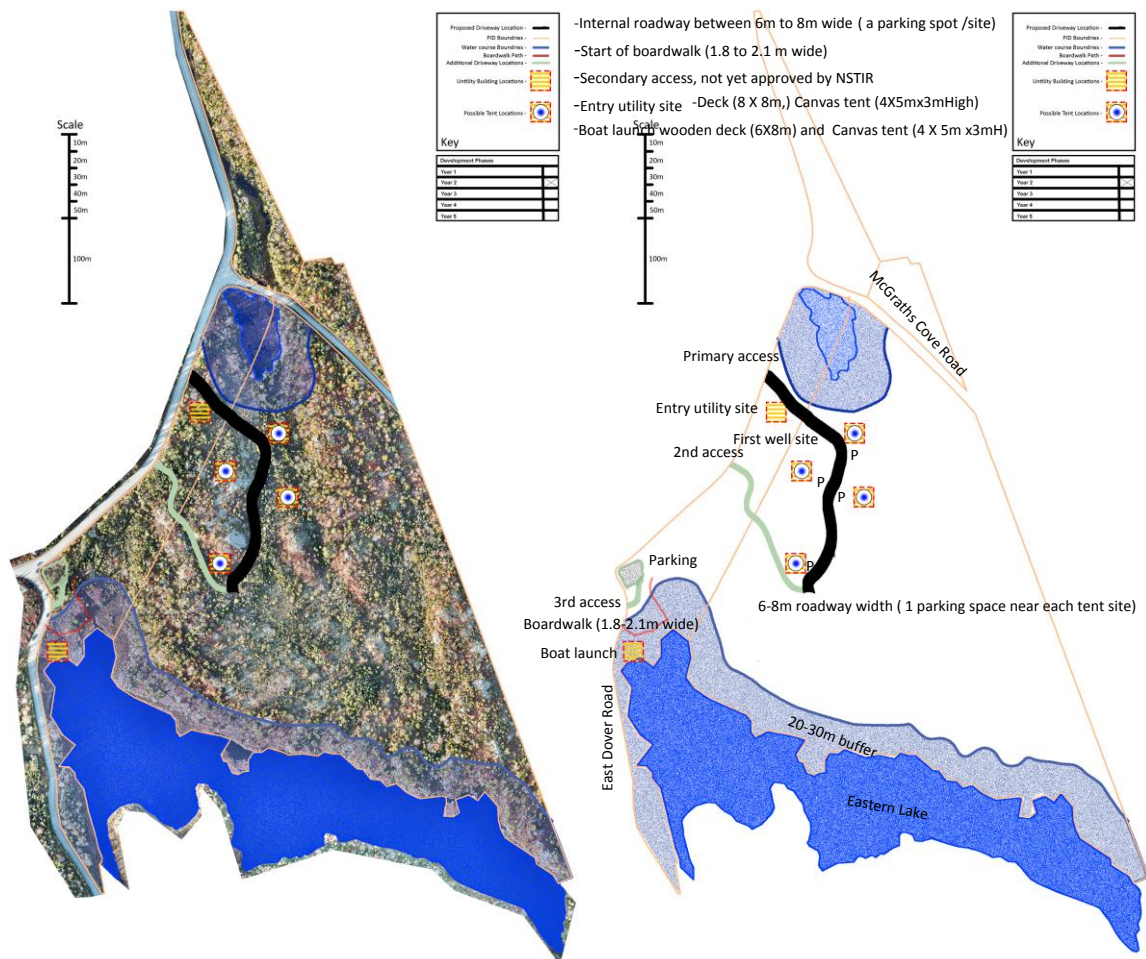
2 tent units are scheduled for construction in the first year.

Tipi tent: Deck - 8m X 8m, Tent - 6m wide X 8m height

Frontier tent: Deck - 8m X 10m, Tent - 6m X 8m & 2 to 3m height

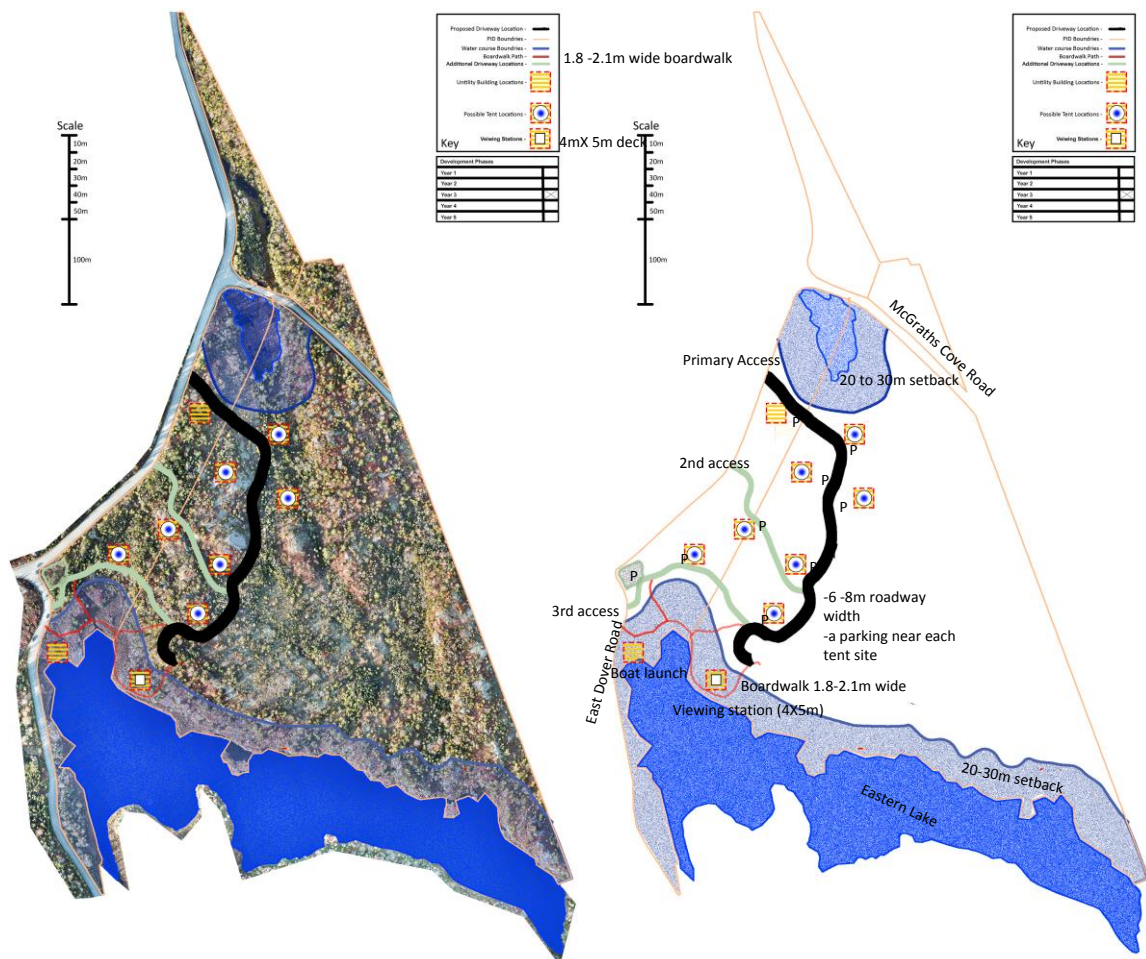
Exterior - BBQ, bench, chairs, Interior - Rocket Mass Wood Stove, 2 double beds, table, chest of drawers, chairs

Year 2



2 tent units and 2 utility areas, the road continuation, a parking area and the start of the board walk are scheduled for construction in the second year.

Year 3

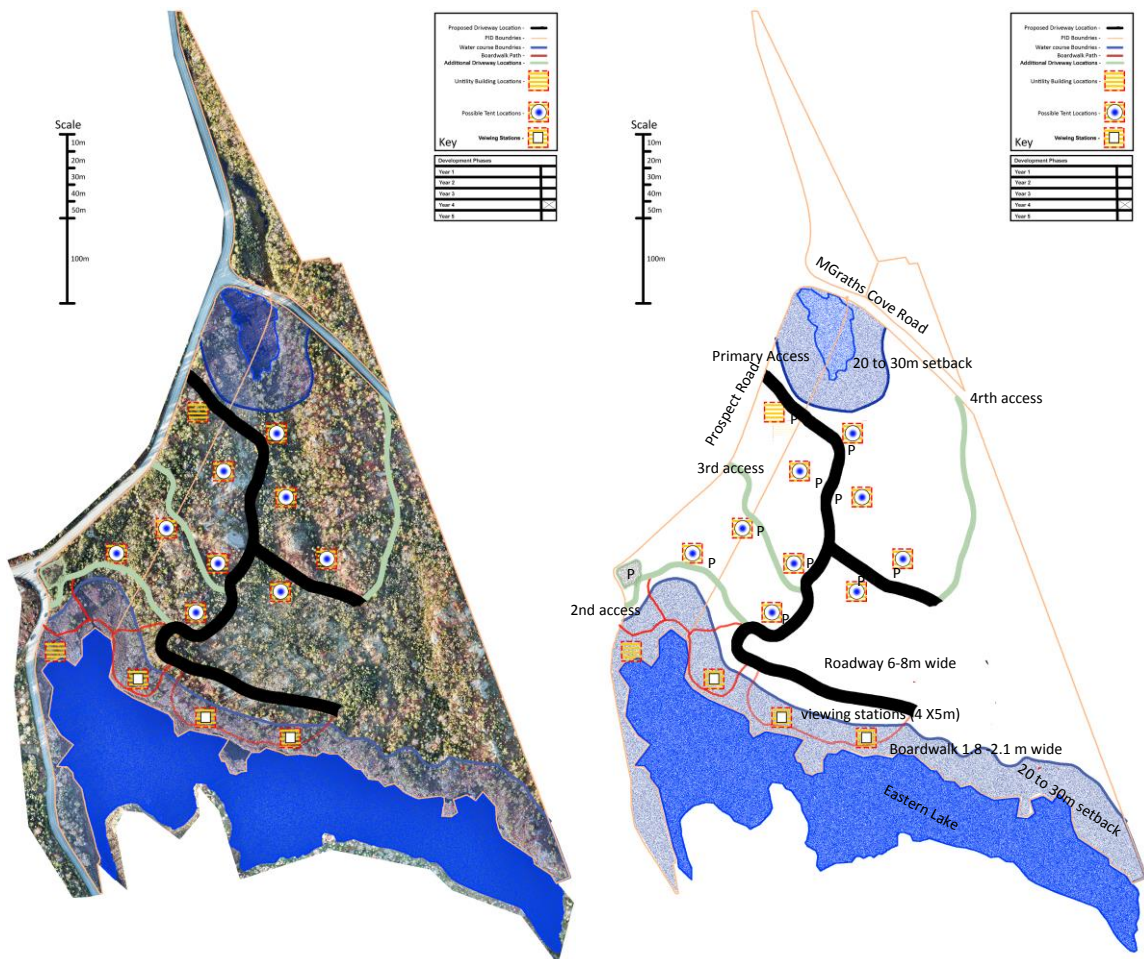


3 tent units and 1 viewing area, the road continuation and the board walk are scheduled for construction in the third year.

LTR 2: WSL – HRM Planning & Development

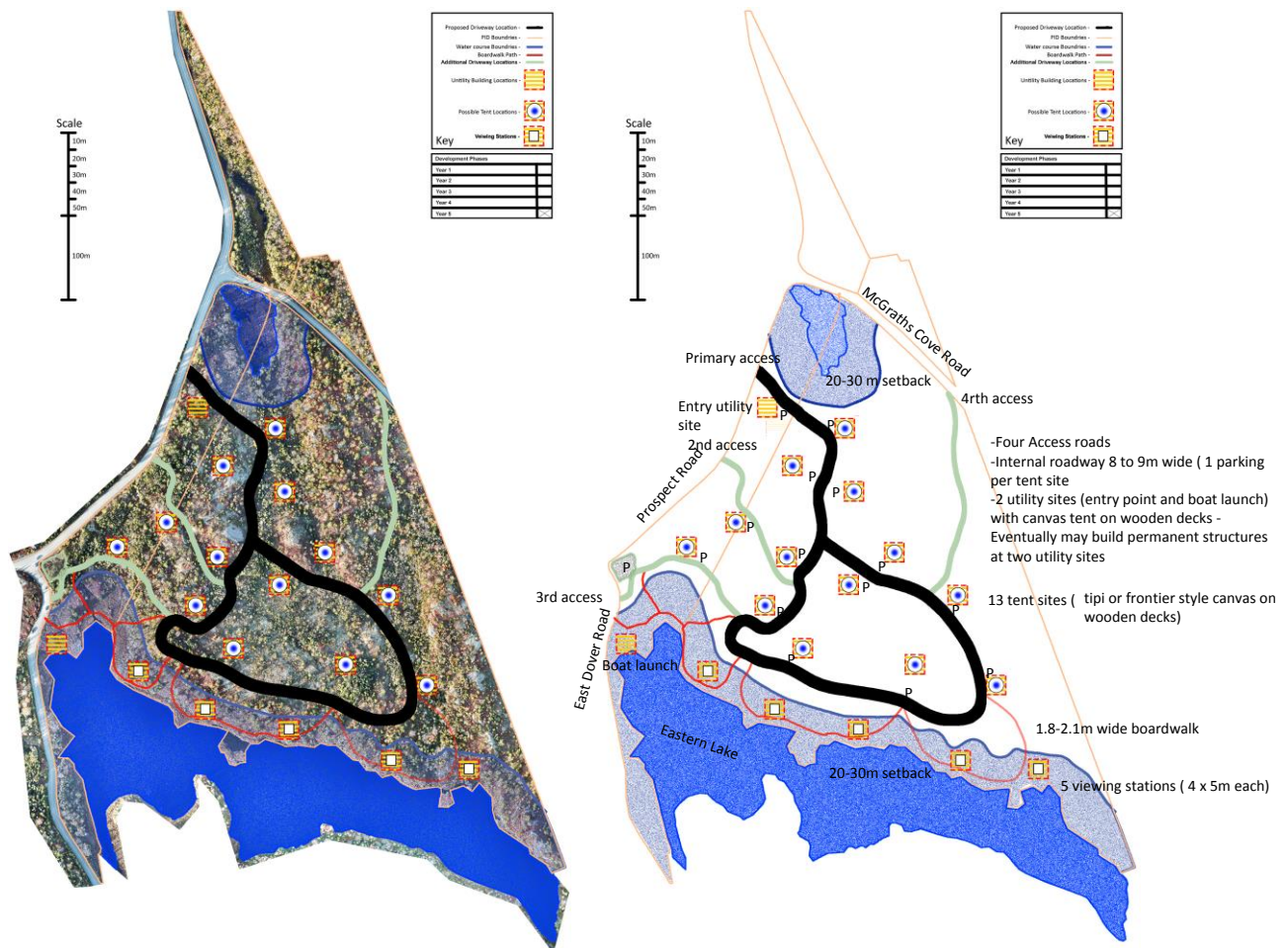
Re: Case No. 22288, Application by David Cahill to enter into a development agreement for a commercial recreation use, a low impact eco-tourism development on PIDS 40853376 and 40065195 off Highway 333, McGraths Cove.

Year 4

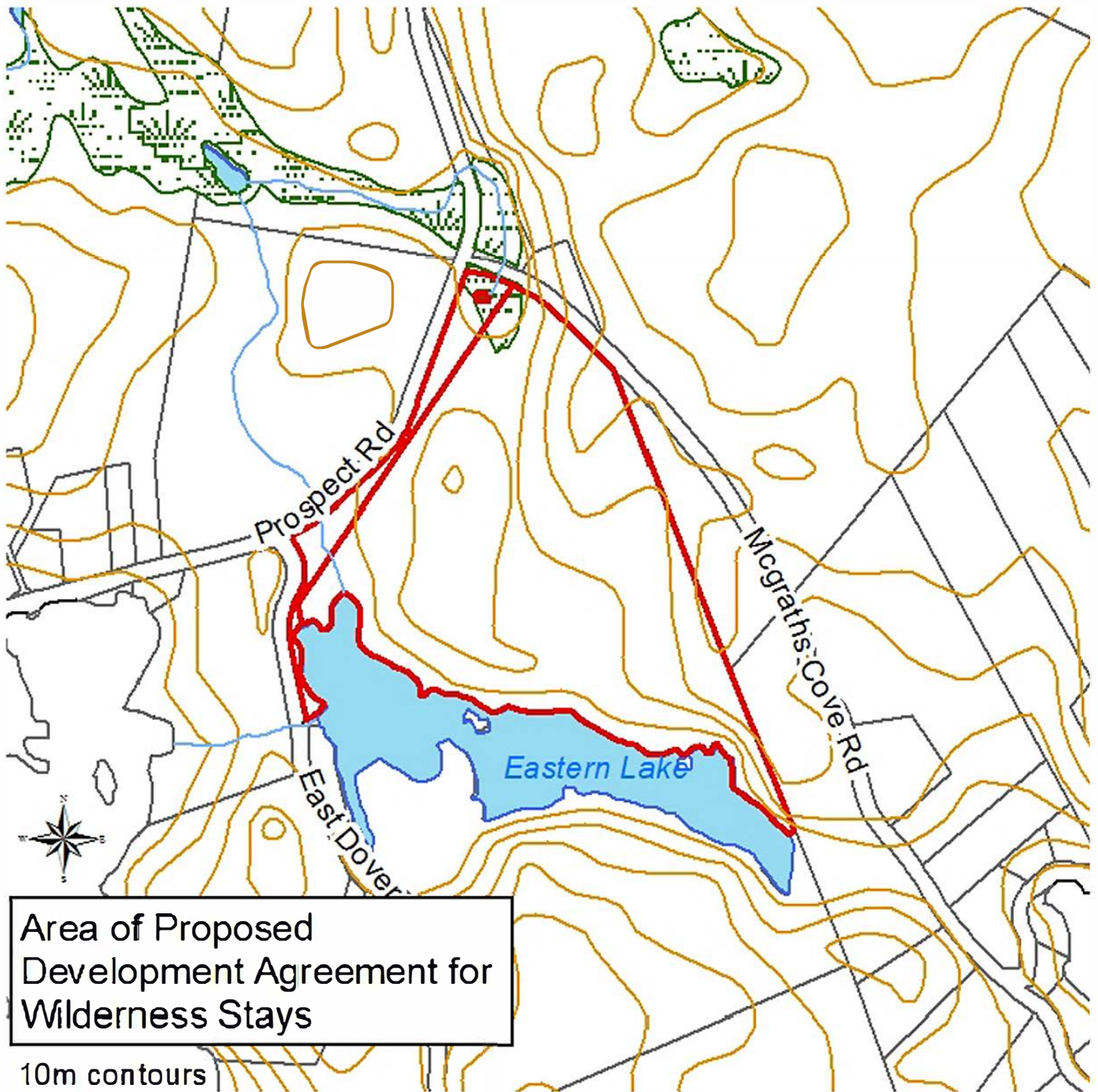


2 tent units and 2 viewing area, the road continuation and the board walk are scheduled for construction in the fourth year.

Year 5



4 tent units and 2 viewing area, the road continuation and the board walk are scheduled for construction in the fifth year.



Tent Units:

Tipi style - 6 metres wide & 8m high

Frontier style - 8m X 6m area and 3 metres high

Wooden decks - 2 metres wider than tents for bench, or chairs and table and BBQ

Interior of tent- two double beds, table, chairs, chest of drawers and possibly a hot tub in a couple tents



Affordable, sustainable and efficient

Canvas tents

Wilderness Stays Ltd is going to build their tents out of high quality, natural, fire retardant material. This will ensure the tents are prepared for all seasons including snow and rain making this the first tent based camp site with permanent fixtures in Nova Scotia.

Traditional, sturdy and cost effective

Canvas Tipis

A tipi is strong, roomy, weatherproof, easy to pitch and above all has a fire inside. It was developed by the people of the great plains of North America, and it is hard to improve on a structure which has enabled people to thrive in such a harsh environment.

▲ 20% Building a tipi is 20% more cost effective than building a yurt

