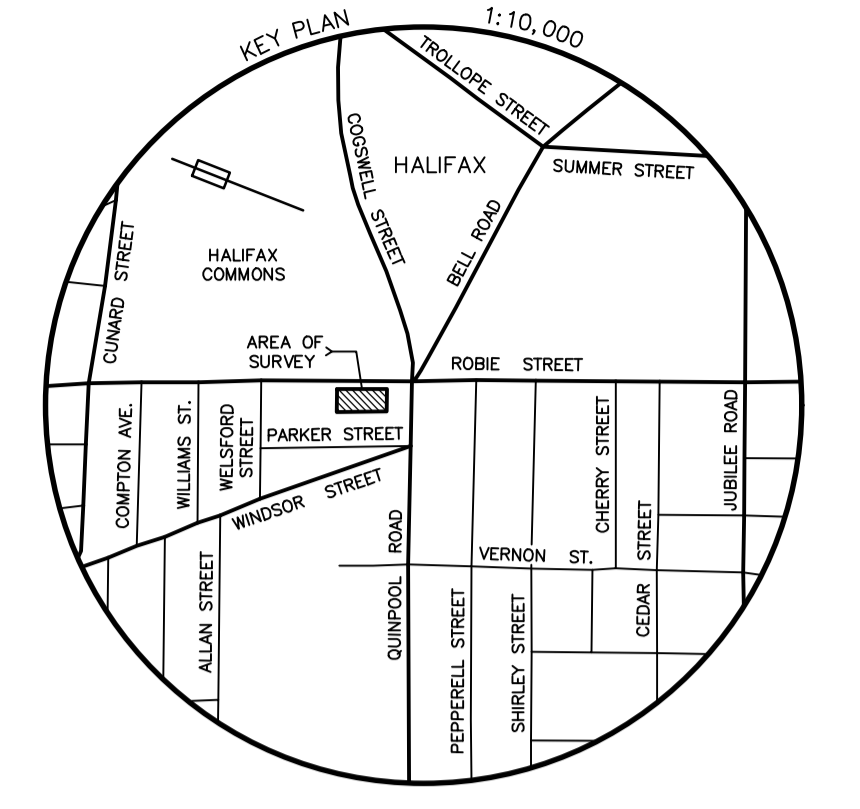


ATTACHMENT

F

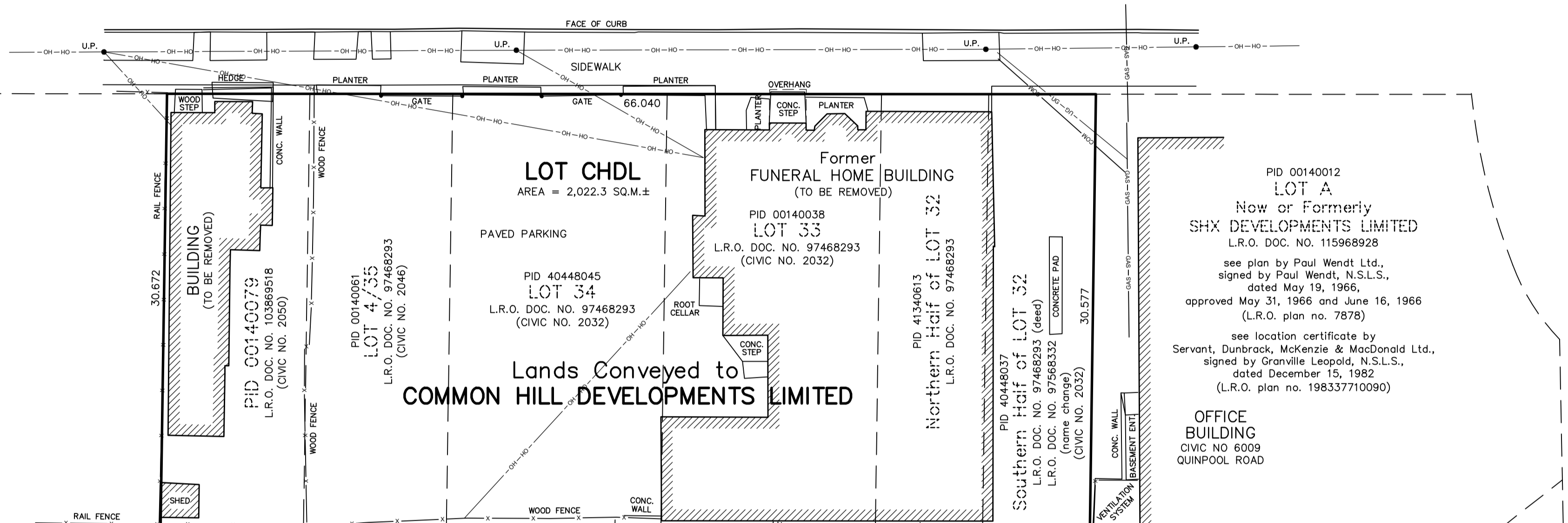
PRELIMINARY
CONSOLIDATION
PLAN

NOVA SCOTIA GRID NORTH
REFERRED TO MERIDIAN 04°30'W



ROBIE STREET
(Width Varies)

PID 00140095
LOT M-2
Now or Formerly
CAPREIT APARTMENTS INC.
BOOK 7462, PAGE 1191
see plan by Servant, Dunbrack, McKenzie & MacDonald Ltd.,
signed by Granville Leopold, N.S.L.S.,
dated July 18, 1983, approved February 24, 1984
(L.R.O. plan no. 20568)



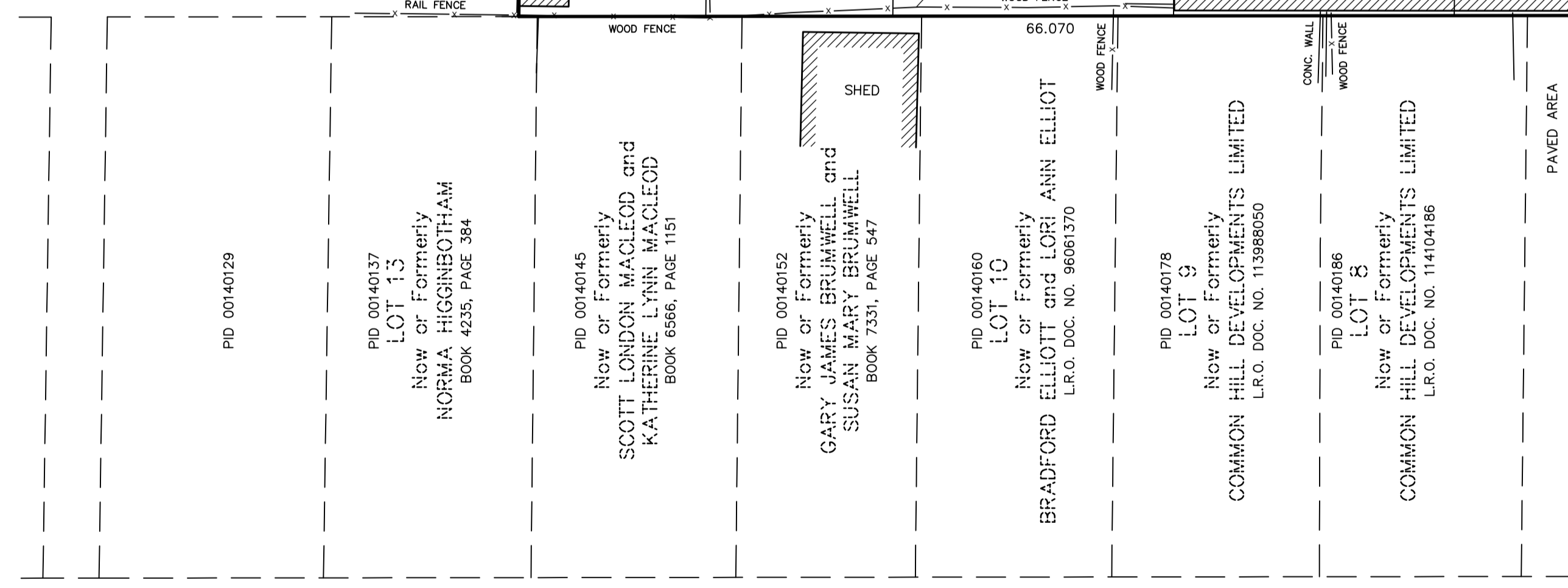
Lands Conveyed to
COMMON HILL DEVELOPMENTS LIMITED

PID 00140012
LOT A
Now or Formerly
SHX DEVELOPMENTS LIMITED
L.R.O. DOC. NO. 115968928
see plan by Paul Wendt Ltd.,
signed by Paul Wendt, N.S.L.S.,
dated May 19, 1966,
approved May 31, 1966 and June 16, 1966
(L.R.O. plan no. 7878)
see location certificate by
Servant, Dunbrack, McKenzie & MacDonald Ltd.,
signed by Granville Leopold, N.S.L.S.,
dated December 15, 1982
(L.R.O. plan no. 198337710090)

OFFICE BUILDING
CIVIC NO 6009
QUINPOOL ROAD

PID 00140020
LOT B
Now or Formerly
SHX DEVELOPMENTS LIMITED
L.R.O. DOC. NO. 115968928
see plan by Paul Wendt Ltd.,
signed by Paul Wendt, N.S.L.S.,
dated May 19, 1966,
approved May 31, 1966 and June 16, 1966
(L.R.O. plan no. 7878)

APPROVAL STAMPS



PARKER STREET
(18.288m. Wide)

WINDSOR STREET

QUINPOOL ROAD
(Width Varies)

LEGEND:

- PLACED SURVEY MARKER
- FOUND SURVEY MARKER
- IRON TUBE
- IRON BAR
- PARKER-KALON MASONRY NAIL
- ROCK POST
- NOVA SCOTIA HIGH PRECISION NETWORK MONUMENT
- NOVA SCOTIA ACTIVE CONTROL STATION
- NOVA SCOTIA COORDINATE MONUMENT
- PLACED
- FOUND
- WITNESS
- RADIUS ; ARC ; CHORD
- POINT OF CURVATURE
- POINT OF COMPOUND CURVATURE
- POINT OF REVERSE CURVATURE
- CALCULATED ; MEASURED ; SET
- PLAN OF PREVIOUS SURVEY ; DEED
- LANDS DEALT WITH BY THIS PLAN
- LAND REGISTRATION OFFICE
- PROPERTY IDENTIFICATION NUMBER
- SQUARE METRES
- UTILITY POLE
- OVERHEAD WIRES
- UNDERGROUND POWER
- UNDERGROUND COMMUNICATION
- UNDERGROUND GAS LINE
- FENCE
- CONCRETE

NOTES:

- FIELD SURVEYS WERE CARRIED OUT ON APRIL 1, 2020.
- LOT DESIGNATOR CHDL ORIGINATES WITH THIS PLAN.
- PRELIMINARY APPROVAL IS REQUESTED FOR LOT CHDL.



WSP Canada Inc.
1 Spectacle Lake Drive
Dartmouth, Nova Scotia
Canada, B3B 1X7
T 902-835-9955
F 902-835-1645
www.wsp.com

PRELIMINARY PLAN
Plan of Survey of LOT CHDL
being a Consolidation of
**Southern Half of LOT 32 ,
Northern Half of LOT 32 , LOT 33 ,
LOT 34 , LOT 4/35 and PID 00140079**
Lands Conveyed to
COMMON HILL DEVELOPMENTS LIMITED
ROBIE STREET
HALIFAX
COUNTY OF HALIFAX
PROVINCE OF NOVA SCOTIA

SCALE : 1/250 (METRIC)
APRIL 7, 2020

REF. NO. 161-12351-01 DMC. NO. 161-12351-01-600