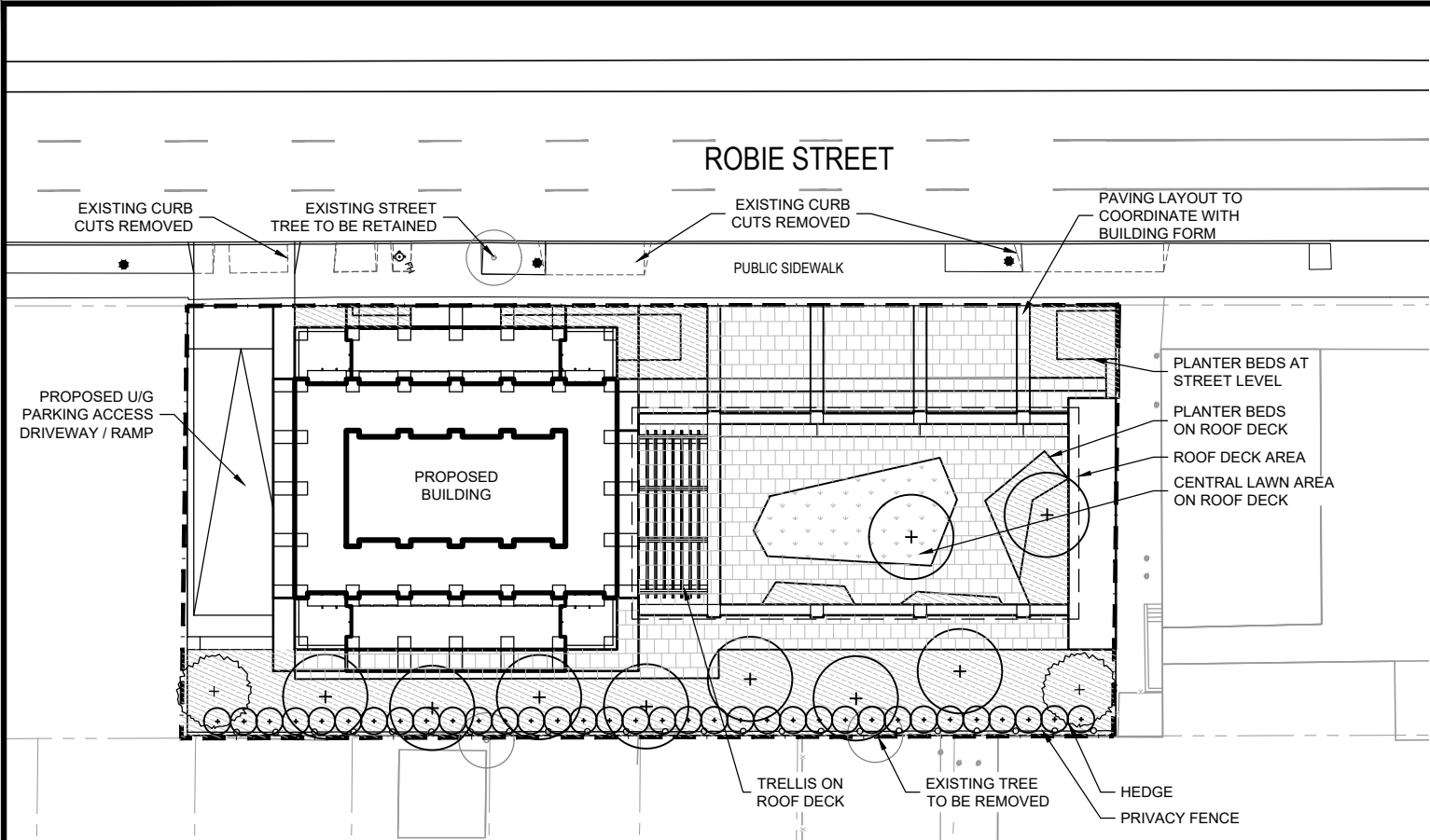


ATTACHMENT

C

**PRELIMINARY
LANDSCAPE
PLAN**



- LEGEND:**
- SOFTSCAPE TOPSOIL AND SOD
 - HARDSCAPE PAVING
 - SOFTSCAPE PLANTING BED
 - PROPERTY LINE
 - EXISTING TREE
 - PROPOSED DECIDUOUS TREE
 - PROPOSED CONIFEROUS TREE

PROPOSED PLANT LIST

BOTANICAL NAME	COMMON NAME	SPACING (mm) (75%)	SIZE	COMMENTS
DECIDUOUS TREES				
<i>Acer x freemanii</i> 'Jeffersred'	Autumn Blaze Maple	as shown	65mm Cal. B&B	TREES TO BE BALL & BURLAP. SOURCED IN SAME GROWING ZONE. ALL TREES SHOULD HAVE 5 TO 7 MAIN BRANCHES WITH DOMINANT LEADER BRANCH AND WITHOUT DEFECT.
<i>Syringa reticulata</i> 'Ivory Silk'	Japanese Tree Lilac	as shown	65mm Cal. B&B	
CONIFEROUS TREES				
<i>Picea glauca</i>	White Spruce	as shown	2.0m H.	
DECIDUOUS SHRUBS				
<i>Buxus x 'Green Velvet'</i>	Green Velvet Boxwood	1000	5 gal.	SHRUBS TO BE IN POTS. SOURCED IN SAME GROWING ZONE. ALL SHRUBS SHOULD HAVE DENSE GROWTH, WELL ROOTED AND WITHOUT DEFECT.
<i>Physocarpus opulifolius</i> 'Podaras 3'	Lemon Candy Ninebark	750	5 gal.	
<i>Berberis thunbergii</i> 'Concorde'	Concord Barberry	750	5 gal.	
<i>Viburnum trilobum</i> 'Bailey Compact'	Bailey Compact American Cranberry	750	5 gal.	
CONIFEROUS SHRUBS				
<i>Juniperus sabina</i> 'Scandia'	Scandia Juniper	900	5 gal.	
VINES AND GROUNDCOVERS				
<i>Parthenocissus quinquefolia</i>	Engelmann's Ivy	500	3 gal.	

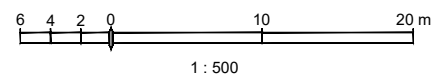
NOTE:
 TREE PROTECTION FOR EXISTING TREES TO BE MAINTAINED TO BE IN ACCORDANCE WITH HRM STANDARD DETAIL FOR TREE PROTECTION ZONE & BARRIER.



ARCHITECTURE | 49

**PRELIMINARY LANDSCAPE PLAN
 2032-2050 ROBIE STREET
 HALIFAX, NOVA SCOTIA**

SCALE



DATE: 29-APR-2020

SP001

FILE: C:\USERS\CAG\009693\DESIGN\PROJ06-ROBIE WEST\WOOD 101-1230-101\MODELS\SP001.DWG - Sheet 1.00