

Lot Coverage

Building Footprint (excluding parking): 15,477 SF
Lot Size: 44,295 SF
Lot Coverage: ~34.9%

Parking Spaces

Level 1: 41 indoor and 10 outdoor
Level 2: 43 indoor
Total: 94 parking spaces

Preliminary Unit Mix

Bachelor: 8 units
1 Bedroom: 2 units
1 Bedroom + Den: 50 units

Unit count and mix may change but total number of bedrooms not to exceed 60

Amenity Space

Communal Room: 1,650 SF
Courtyard: 6,760 SF
Private Roof Garden: 2,130 SF
Communal Roof Gardens: 4,970 SF
Decks: 6,390 SF
Total: 21,900 SF



United Gulf
 Developments Limited

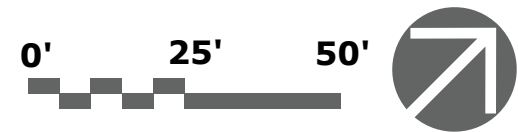
Level 1 Floor Plan
 910 Bedford Highway





United Gulf
Developments Limited

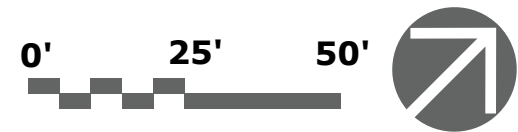
Level 2 Floor Plan
910 Bedford Highway

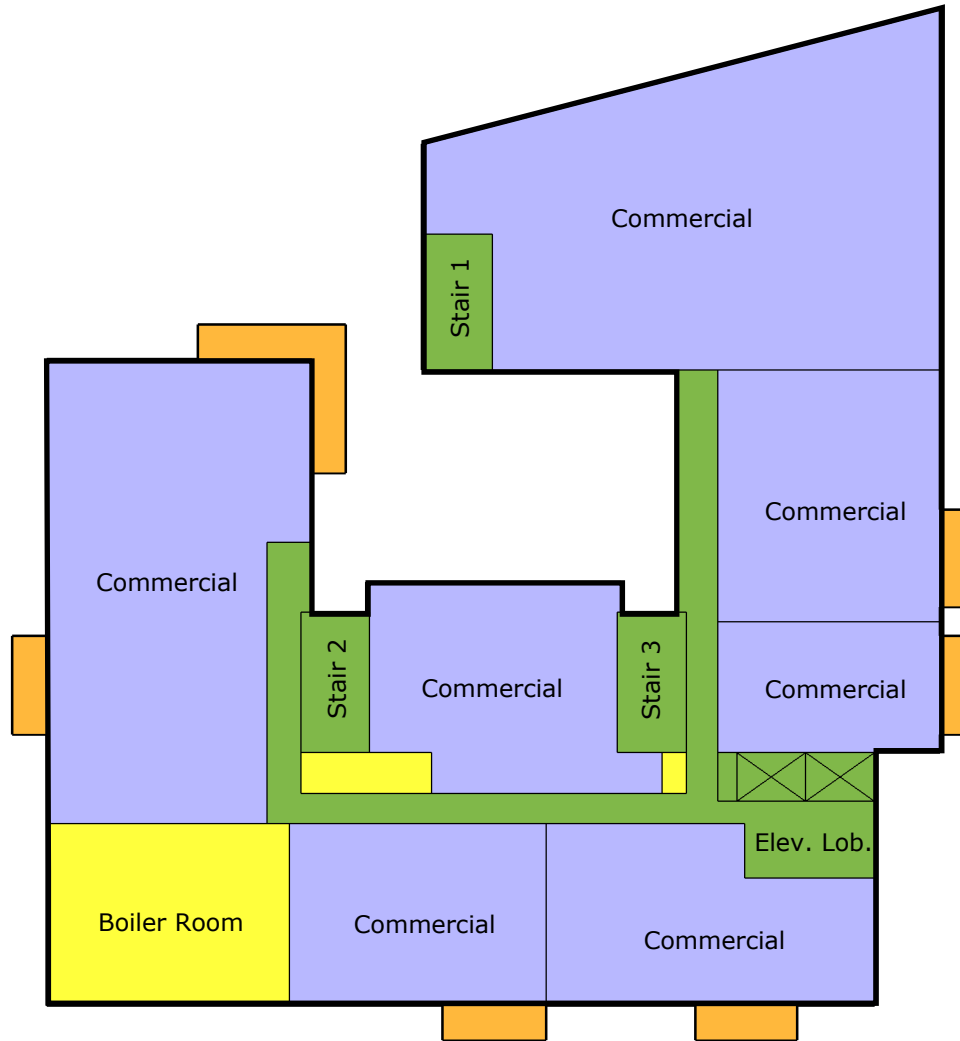




United Gulf
 Developments Limited

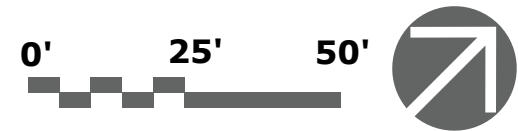
Level 3 Floor Plan
 910 Bedford Highway

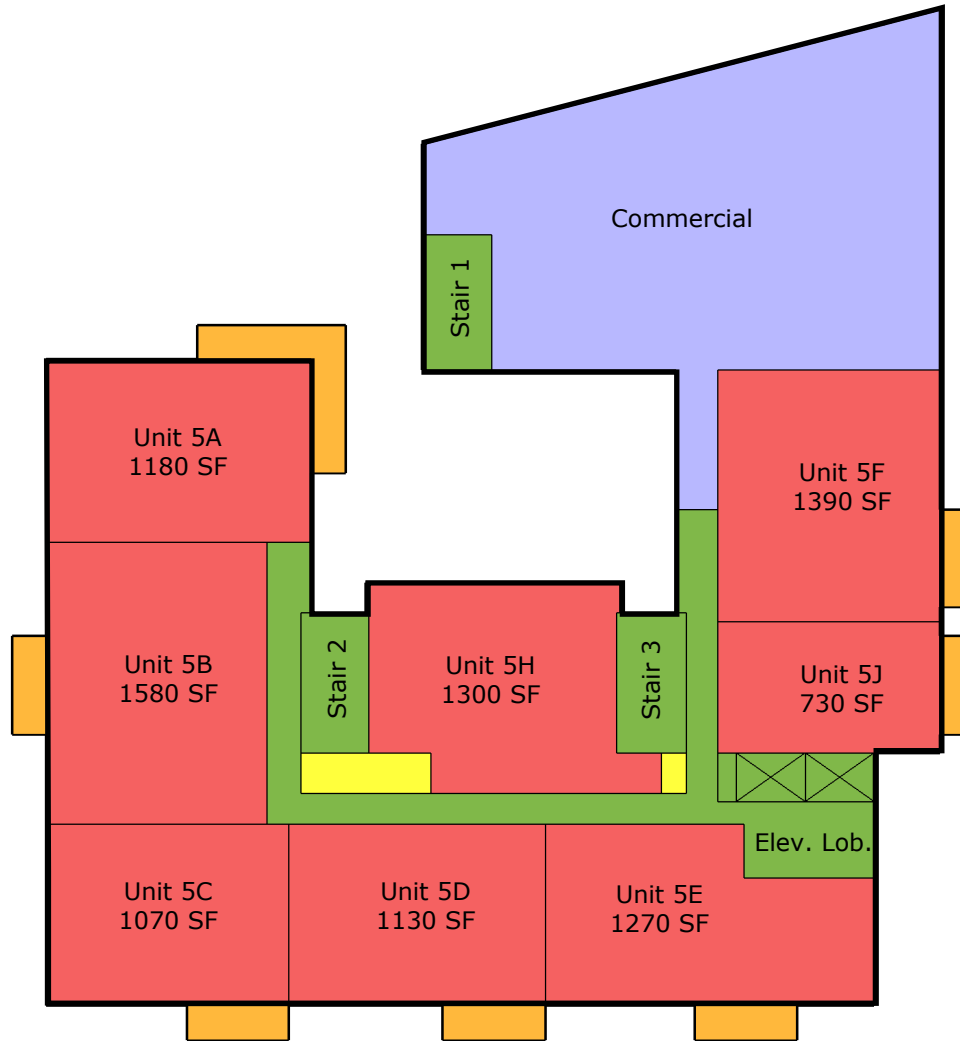




United Gulf
 Developments Limited

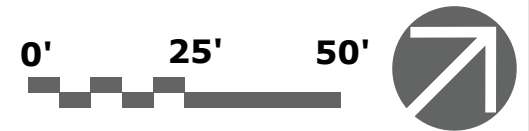
Level 4 Floor Plan
 910 Bedford Highway

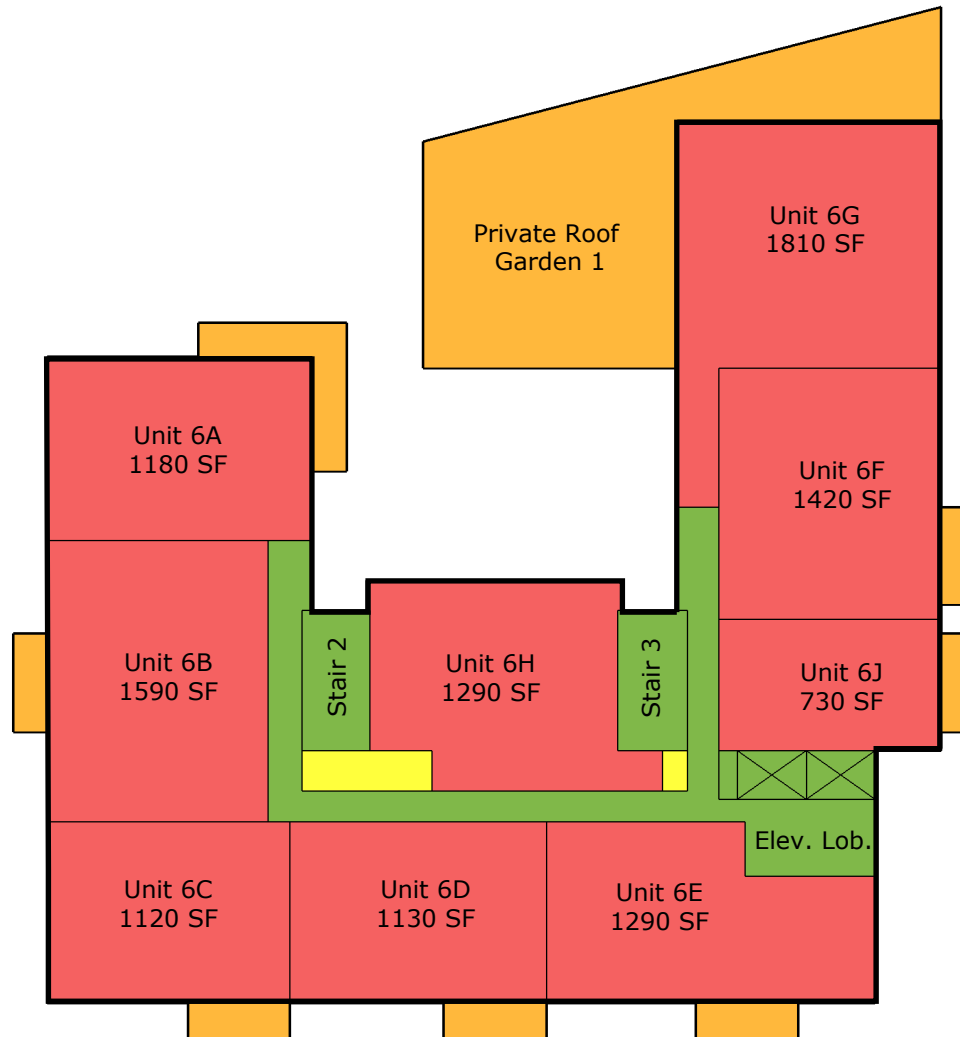




United Gulf
 Developments Limited

Level 5 Floor Plan
 910 Bedford Highway



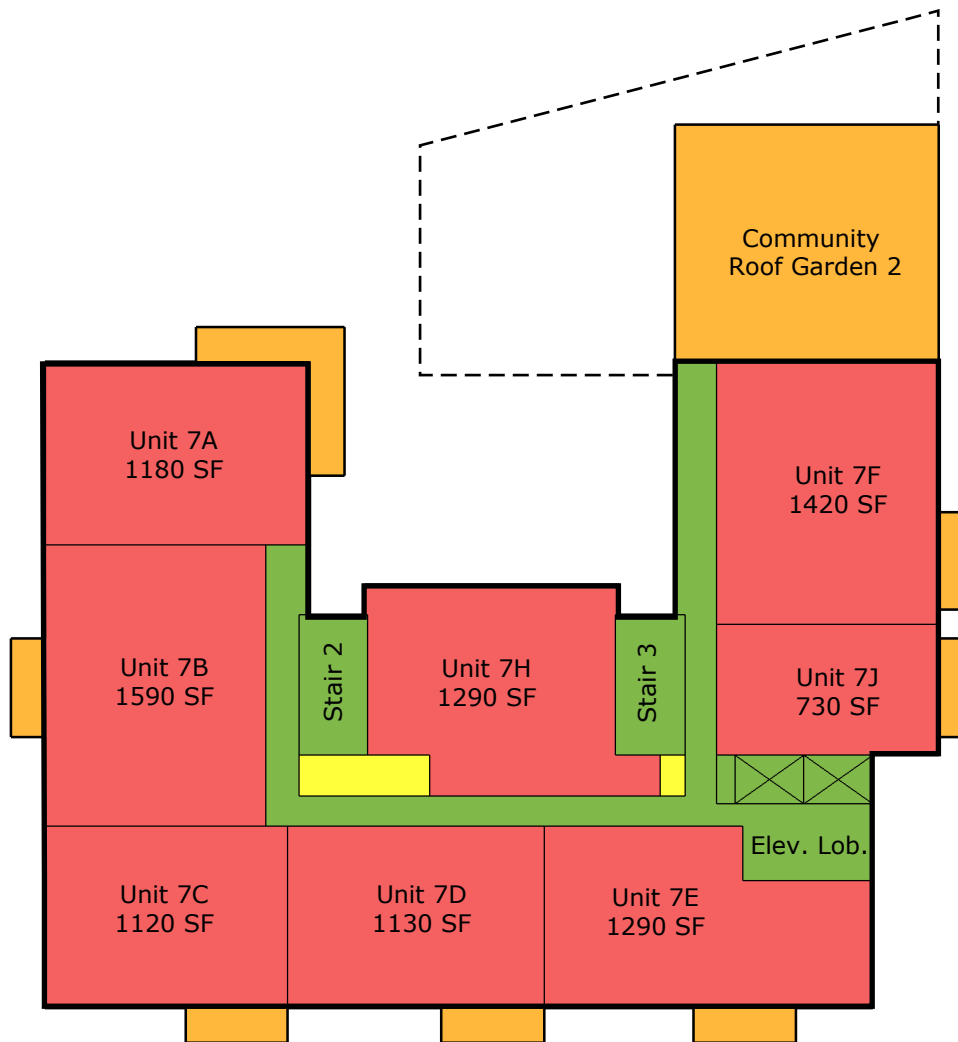


United Gulf
Developments Limited

Level 6 Floor Plan
910 Bedford Highway

0' 25' 50'



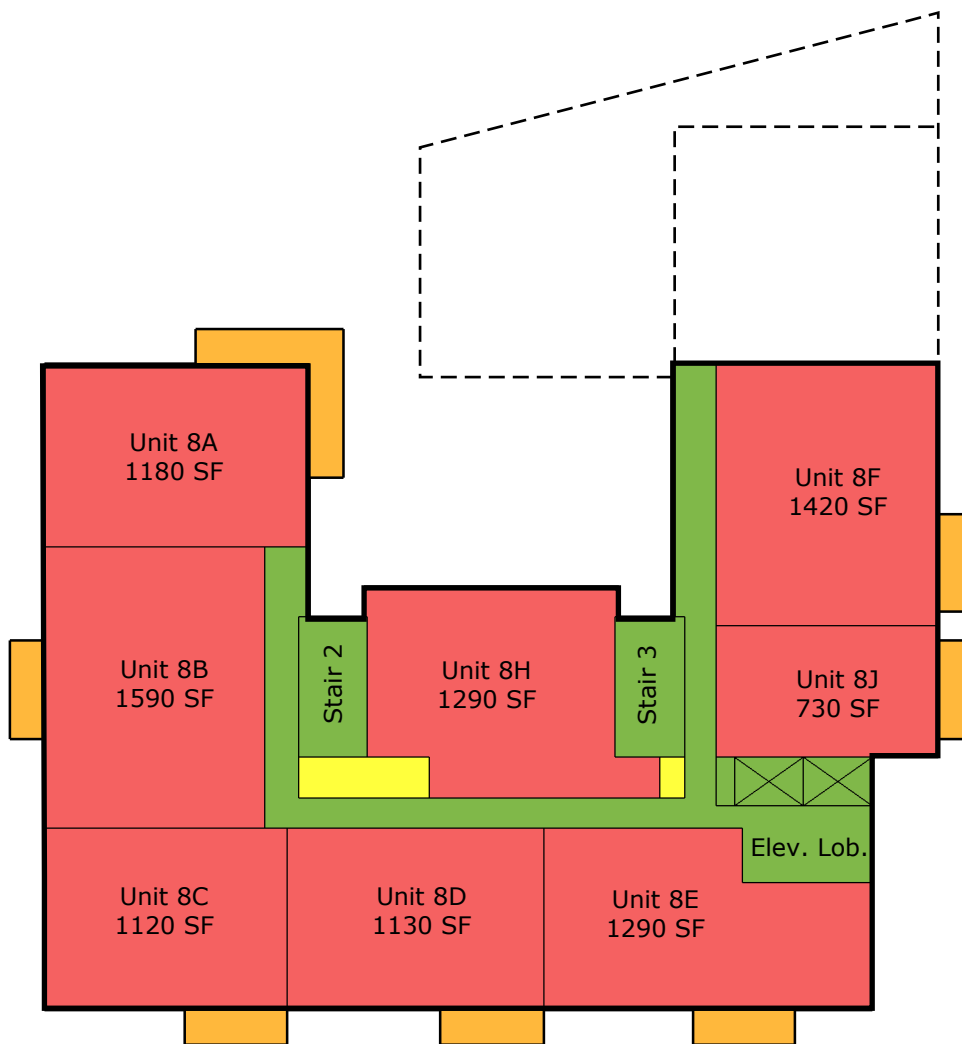


United Gulf
Developments Limited

Level 7 Floor Plan
910 Bedford Highway

0' 25' 50'

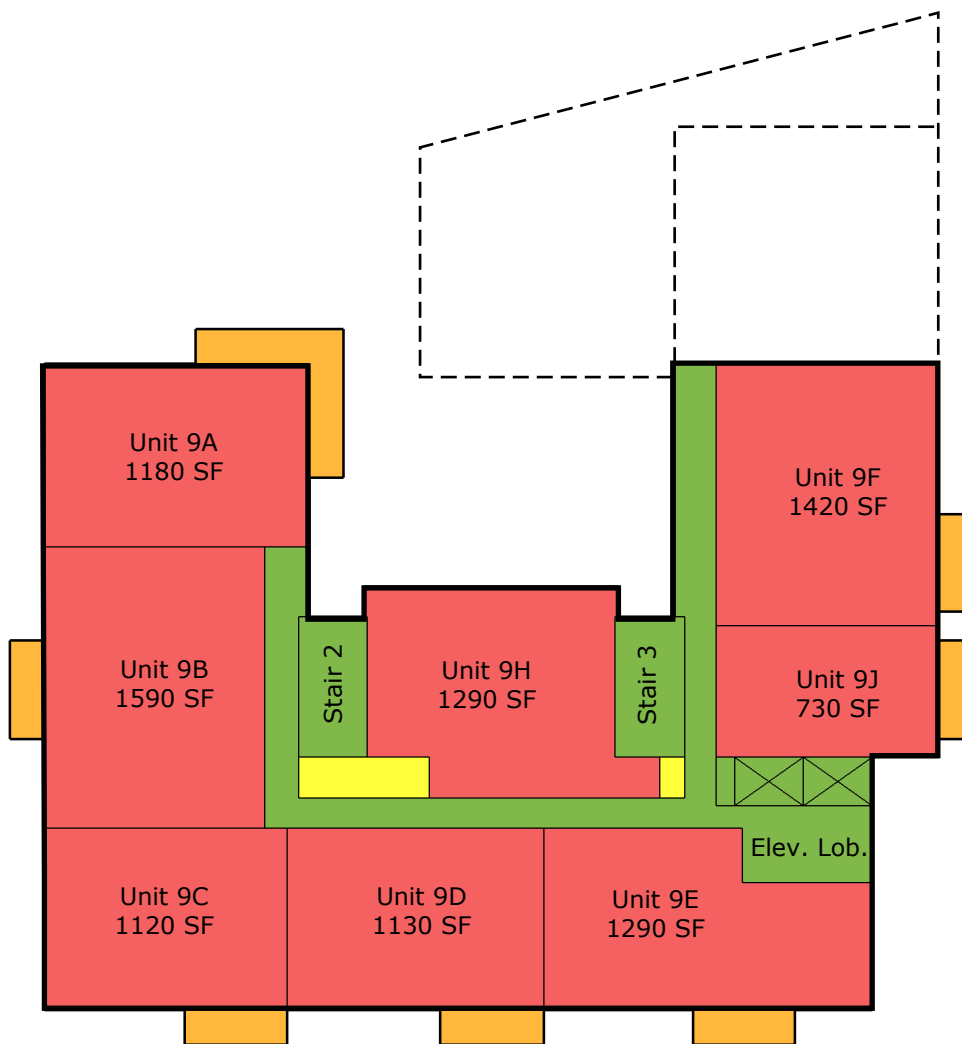




United Gulf
Developments Limited

Level 8 Floor Plan
910 Bedford Highway

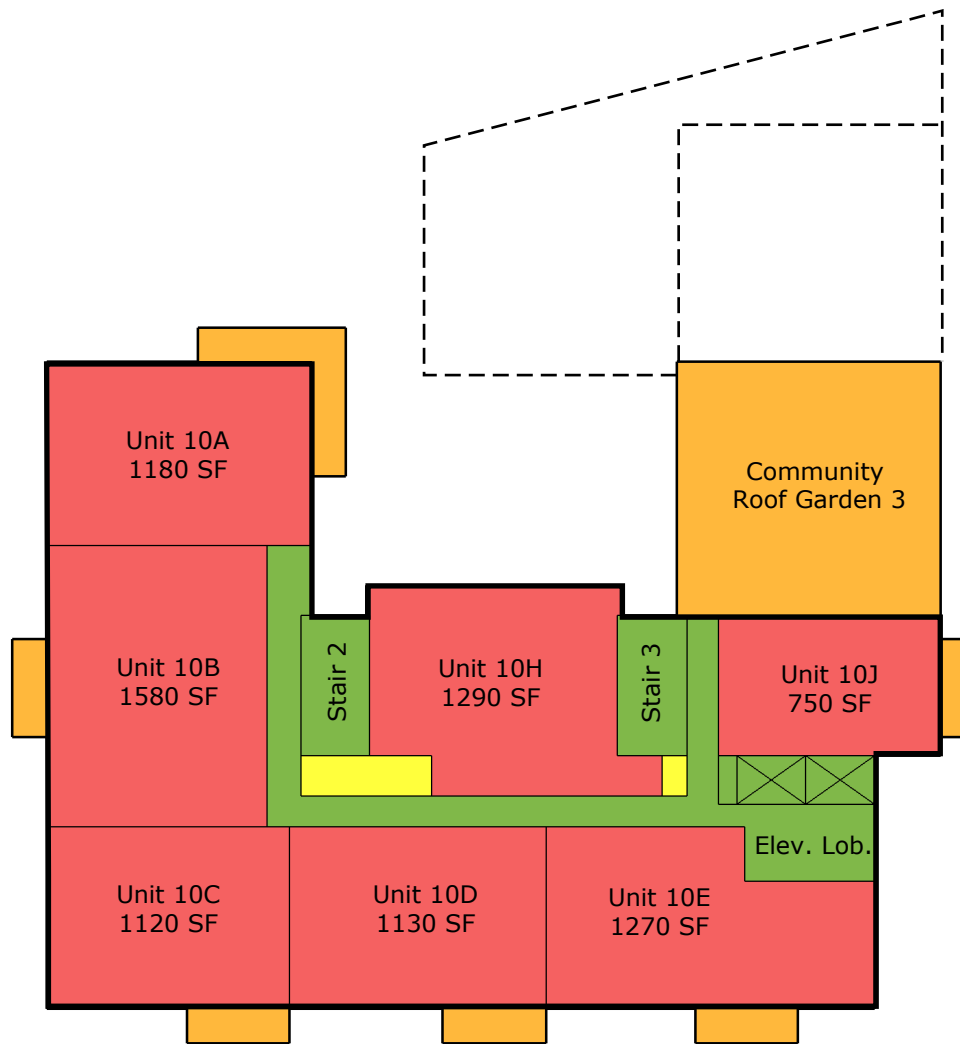




United Gulf
Developments Limited

Level 9 Floor Plan
910 Bedford Highway

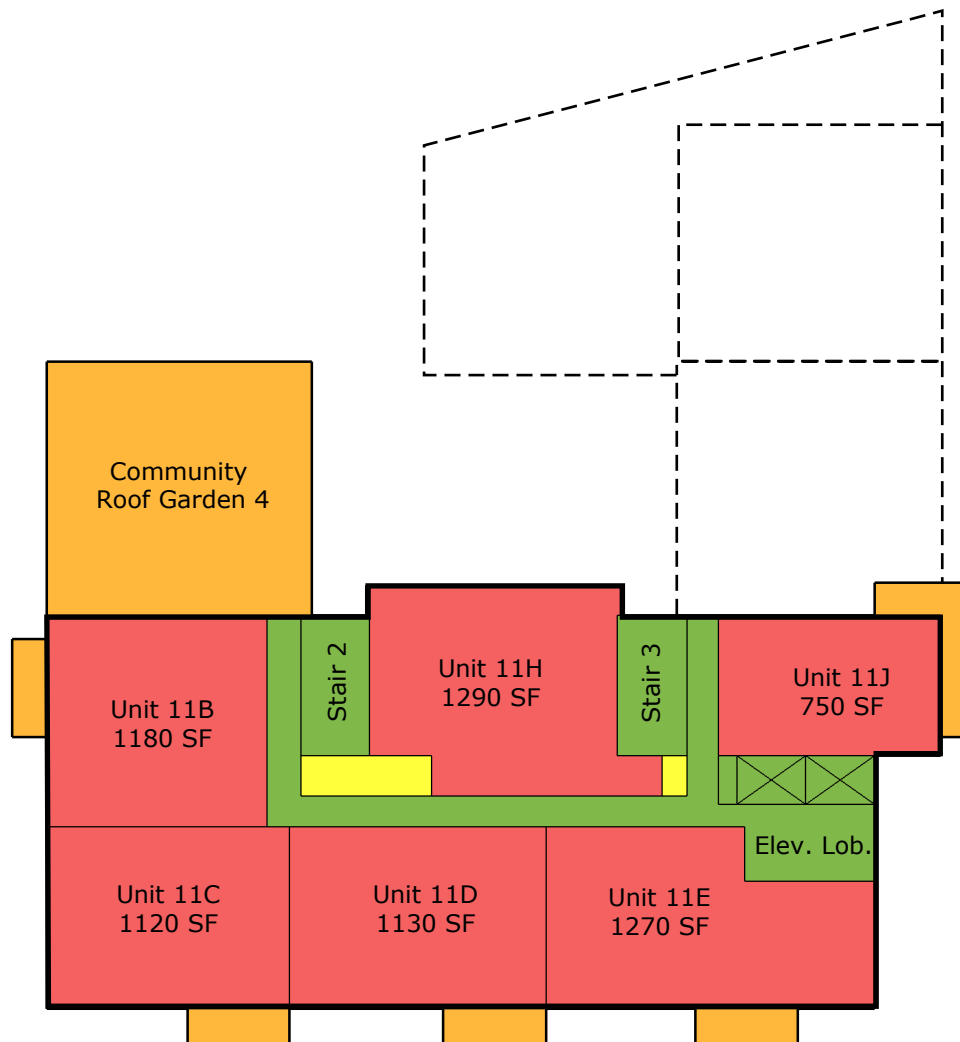




United Gulf
Developments Limited

Level 10 Floor Plan
910 Bedford Highway

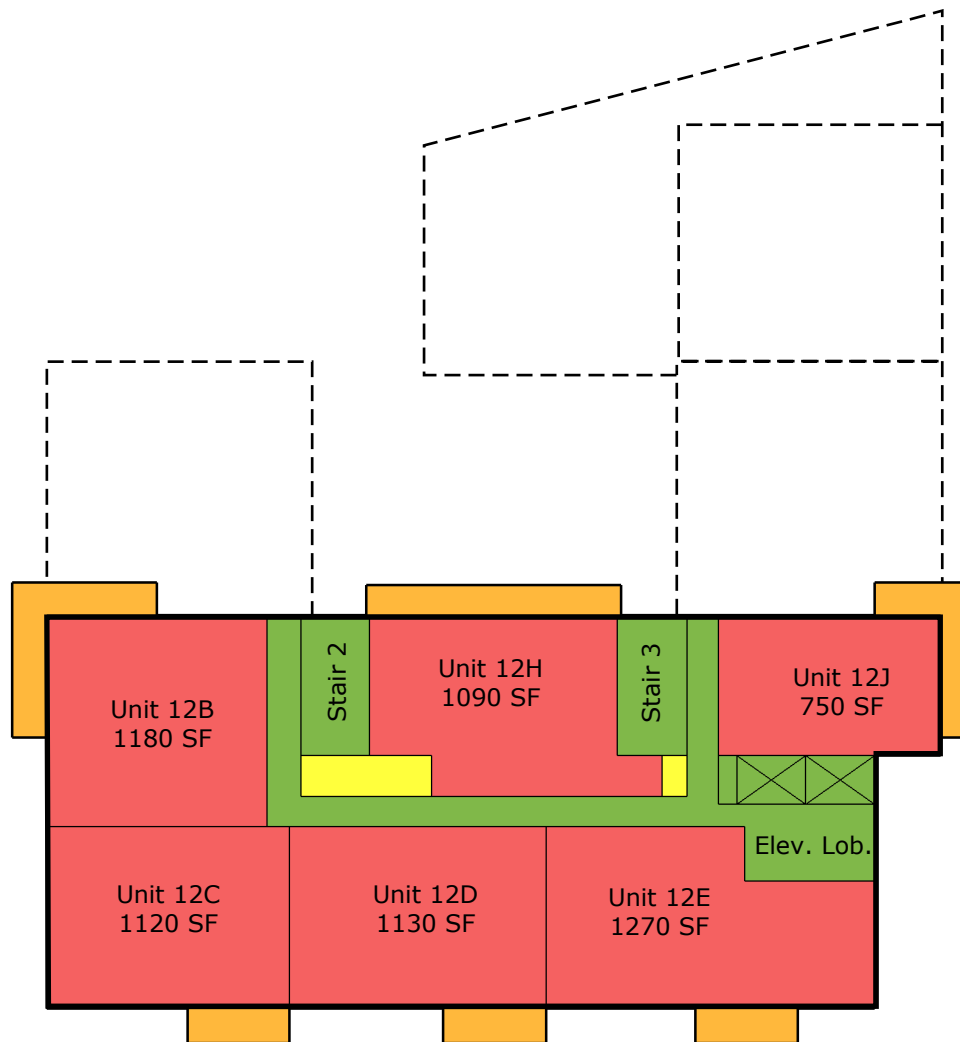




United Gulf
Developments Limited

Level 11 Floor Plan
910 Bedford Highway



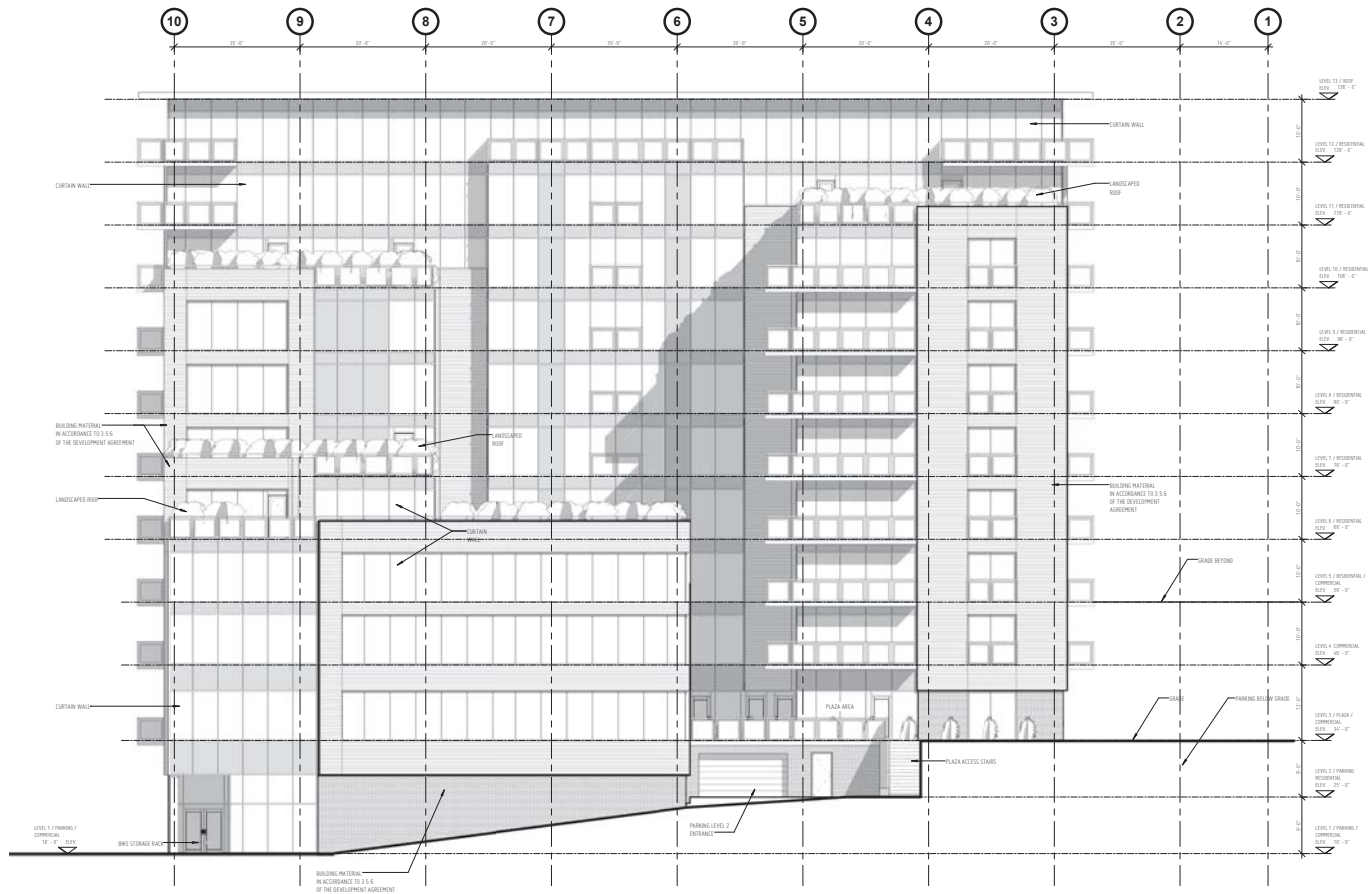


United Gulf
Developments Limited

Level 12 Floor Plan
910 Bedford Highway

0' 25' 50'





1 NORTH WEST ELEVATION
 3201 SCALE: 1/8" = 1'-0"



Fowler Bauld & Mitchell Ltd.
 PO Box 514, Suite 102
 1660 Hollis Street, Halifax, Nova Scotia B3J 2K7
 Tel: 902 429 4100 Fax: 902 423 3063
 email: archtech@fbm.ns.ca www.fbm.ns.ca

REVISION

NO.	REVISION	BY	DATE

NINE - TEN BEDFORD HWY
 BEDFORD NOVA SCOTIA
 FOR 2011-068 DATE 15 JUN 15
 DRAWN BY SAMF
 UNITED GULF DEVELOPMENTS LIMITED

BUILDING ELEVATIONS
 (SCHEDULE H)
3201
 SCALE 1/8" = 1'-0"

© 2011 Fowler Bauld & Mitchell Ltd. All rights reserved. No part of this drawing may be reproduced without the written consent of Fowler Bauld & Mitchell Ltd.



1 NORTH EAST ELEVATION
 3202 SCALE: 1/8" = 1'-0"

FOWLER BAULD & MITCHELL
 architecture

Fowler Bauld & Mitchell Ltd.
 PO Box 514, Suite 102
 1660 Hollis Street, Halifax, Nova Scotia B3J 2K7
 Tel: 902 429 4100 Fax: 902 423 3063
 email: archtects@fbsm.ns.ca www.fbsm.ns.ca

REVISION

NO.	REVISION	BY	DATE

NINE - TEN BEDFORD HWY
 BEDFORD NOVA SCOTIA

FOR 2011-068 DATE 15 JUN 15
 01591

UNITED GULF DEVELOPMENTS LIMITED

BUILDING ELEVATIONS
 (SCHEDULE H)

3202

CFH SAMF SCALE 1/8" = 1'-0"

© 2015 Fowler Bauld & Mitchell Ltd. All rights reserved. No part of this document may be reproduced without the written consent of Fowler Bauld & Mitchell Ltd.



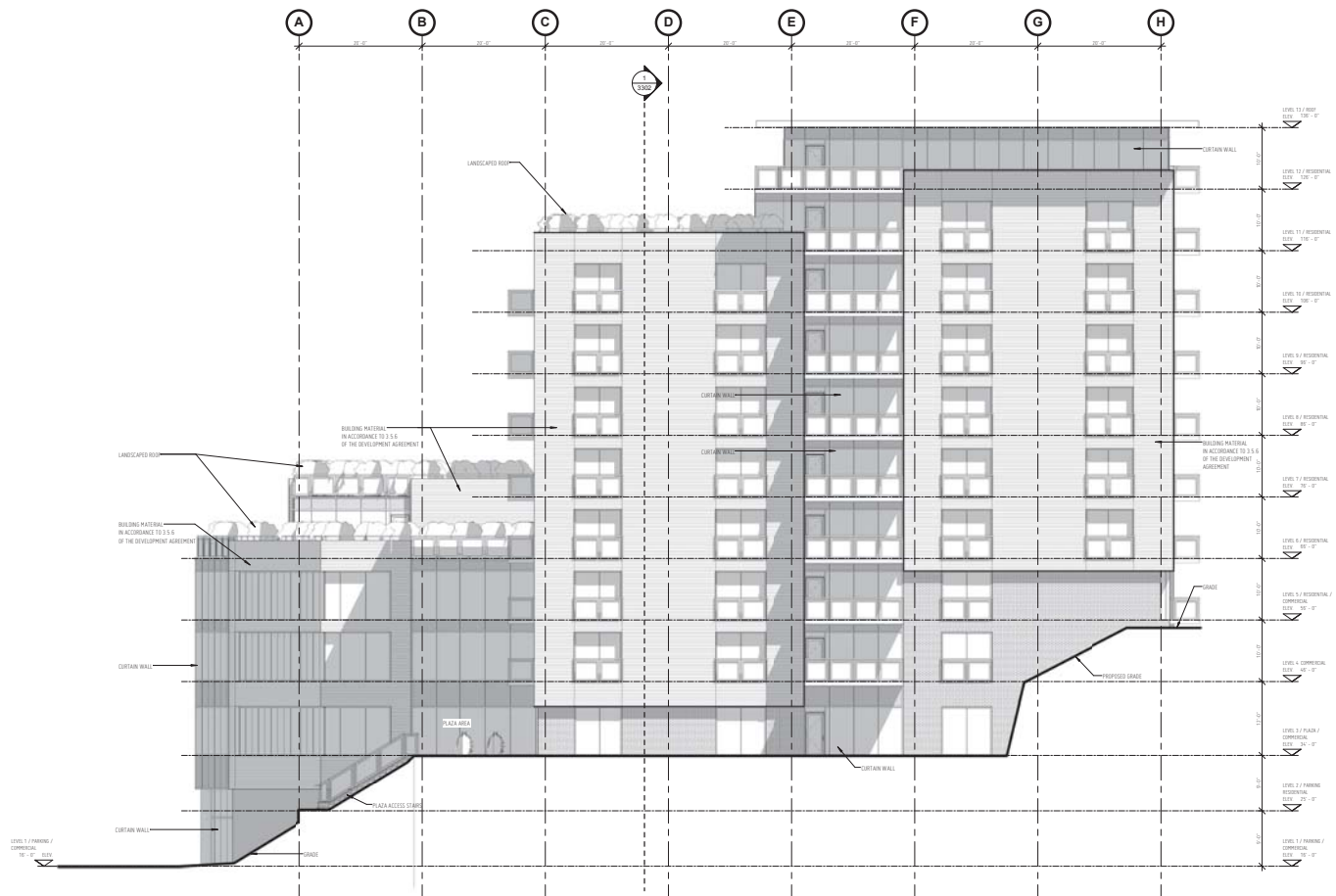
1 SOUTH EAST ELEVATION
3203 SCALE: 1/8" = 1'-0"

STAMP

NO.	REVISION	BY	DATE

NINE - TEN BEDFORD HWY
BEDFORD NOVA SCOTIA
FOR 2011-068 DATE 15 JUN 15
UNITED GULF DEVELOPMENTS LIMITED

BUILDING ELEVATIONS
(SCHEDULE H)
3203
Author Checker 1/8" = 1'-0"



1 SOUTH WEST ELEVATION
3204 SCALE: 1/8" = 1'-0"



Fowler Bauld & Mitchell Ltd.
PO Box 514, Suite 102
1660 Hollis Street, Halifax, Nova Scotia B3J 2K7
Tel: 902 429 4100 Fax: 902 423 3063
email: architects@fbm.ns.ca www.fbm.ns.ca

DATE

NO.	REVISION	BY	DATE

NINE - TEN BEDFORD HWY
BEDFORD NOVA SCOTIA
2011-068 DATE 15 JUN 15
UNITED GULF DEVELOPMENTS LIMITED

BUILDING ELEVATIONS
(SCHEDULE H)
3204
Author Checker SCALE 1/8" = 1'-0"

© 2011 Fowler Bauld & Mitchell Ltd. All Rights Reserved. No part of this drawing may be reproduced without the written consent of Fowler Bauld & Mitchell Ltd.



**FOWLER
BAULD &
MITCHELL**

