

**EAST ELEVATION**

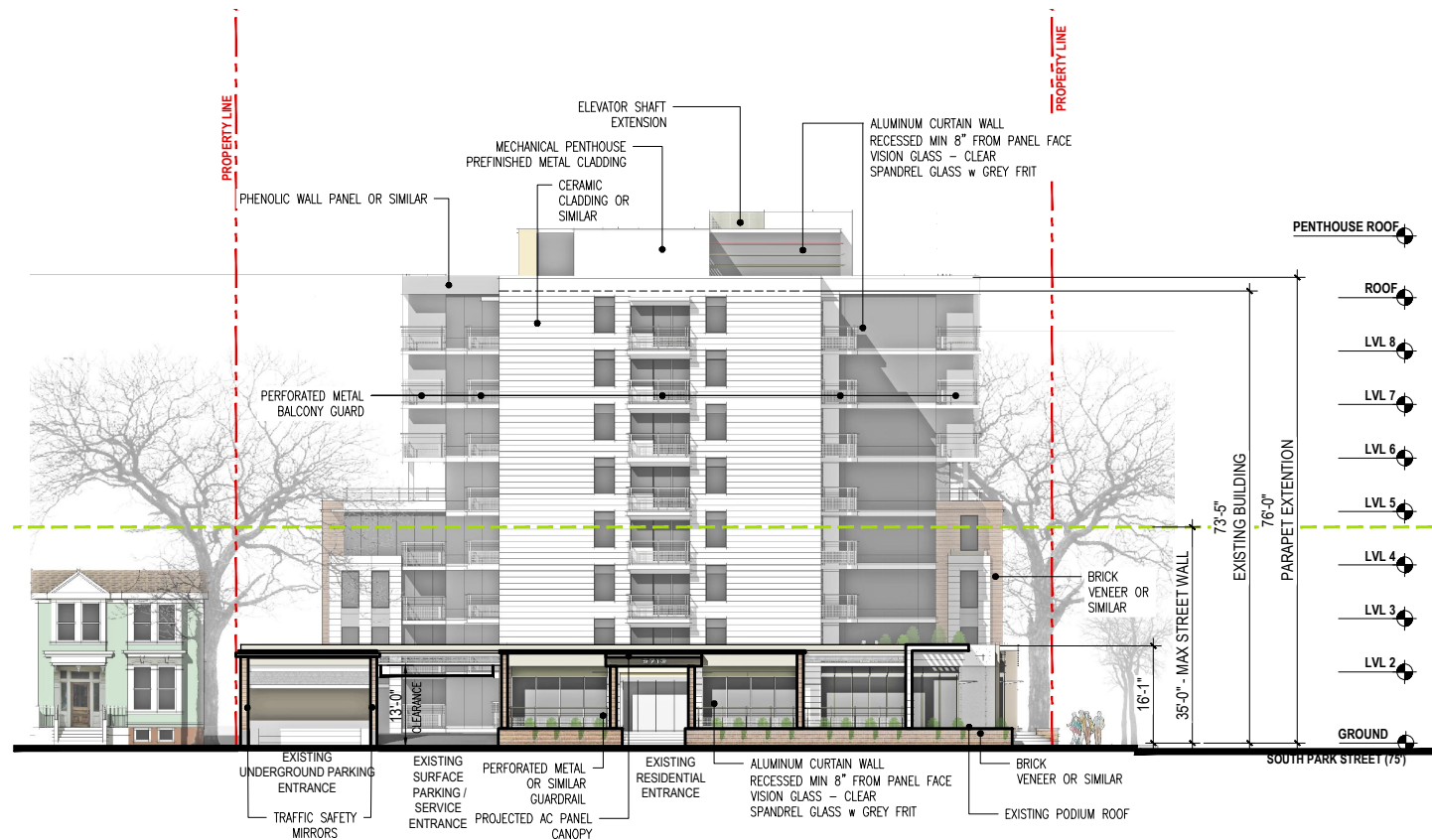


**SOUTH PARK TOWERS\_ RENOVATION**

1102-1106 SOUTH PARK ST \ 5713 VICTORIA RD., HALIFAX, NS

BUILDING ELEVATIONS AND STREETWALL FRAMEWORK

SCHEDULE D-01



**SOUTH ELEVATION**

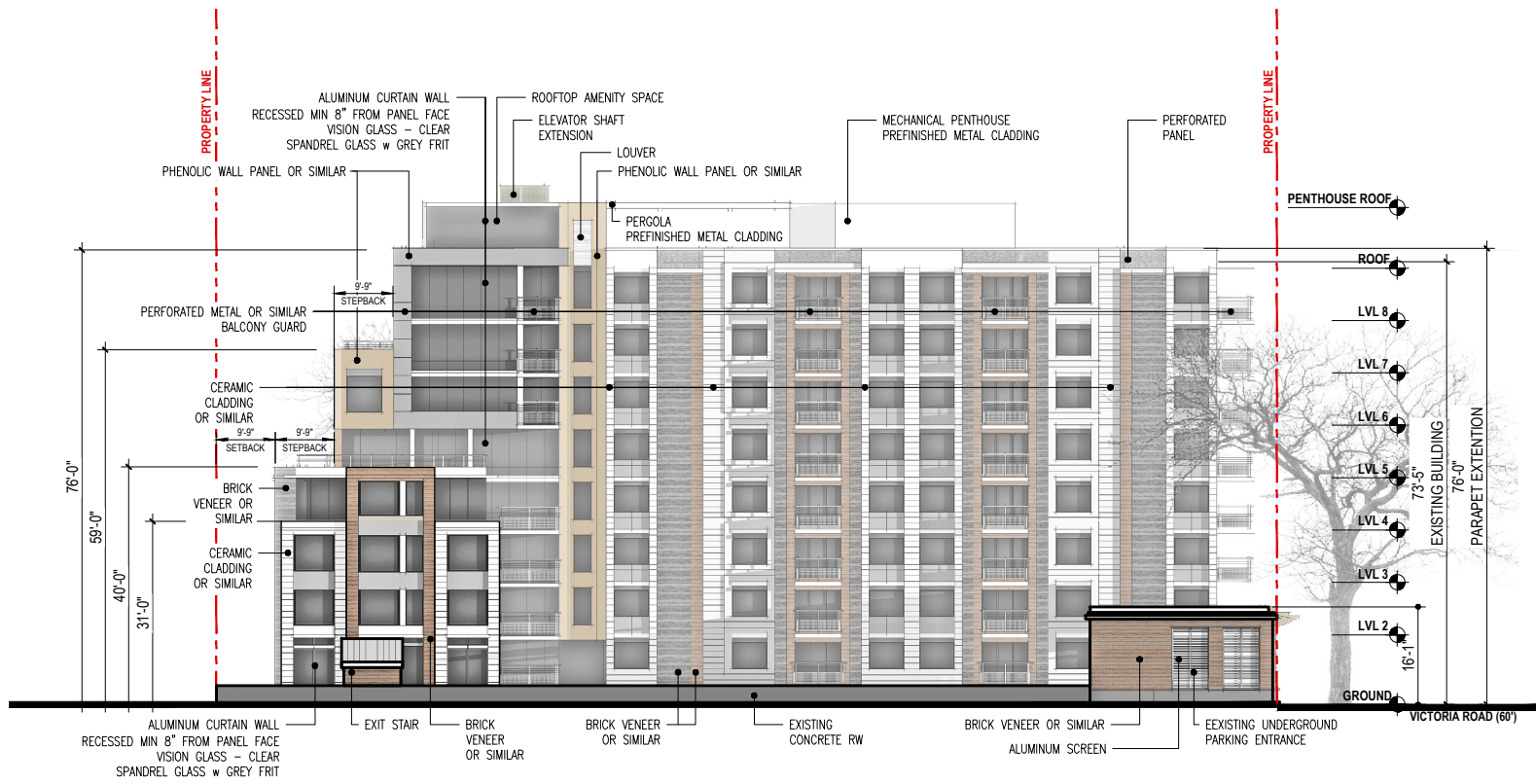


**SOUTH PARK TOWERS\_ RENOVATION**

1102-1106 SOUTH PARK ST \ 5713 VICTORIA RD., HALIFAX, NS

BUILDING ELEVATIONS AND STREETWALL FRAMEWORK

SCHEDULE D-02



**WEST ELEVATION**



**SOUTH PARK TOWERS\_ RENOVATION**

1102-1106 SOUTH PARK ST \ 5713 VICTORIA RD., HALIFAX, NS

BUILDING ELEVATIONS AND STREETWALL FRAMEWORK

SCHEDULE D-03



**SOUTH PARK TOWERS\_ RENOVATION**

1102-1106 SOUTH PARK ST \ 5713 VICTORIA RD., HALIFAX, NS

BUILDING ELEVATIONS AND STREETWALL FRAMEWORK

SCHEDULE D-04

**Zzap Consulting Inc.**

1 Canal Street, Dartmouth, NS B2Y 2W1 Zzap.ca

Mar 2019