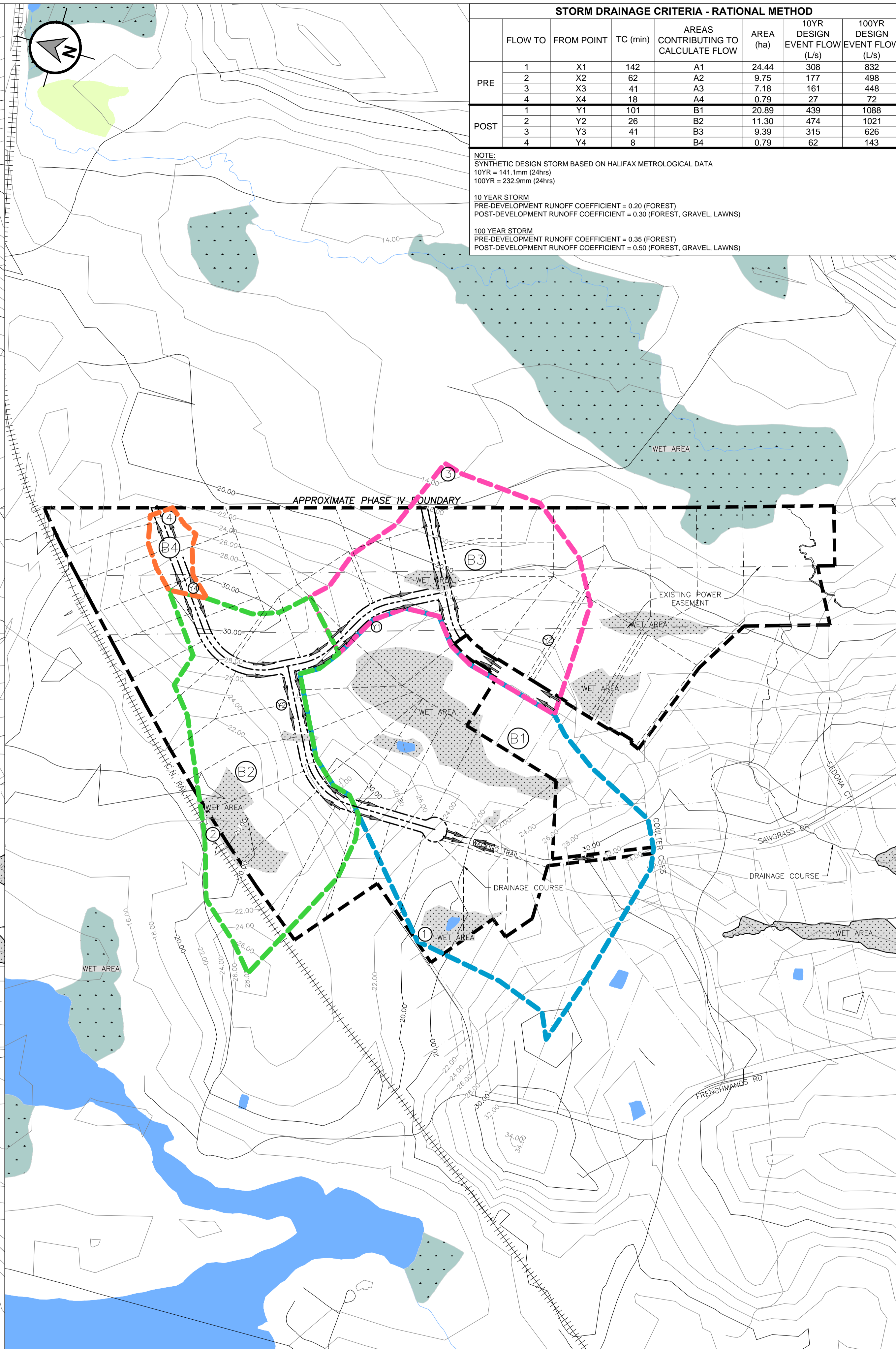


1 PRE-DEVELOPMENT  
Scale: 1:4000



2 POST-DEVELOPMENT  
Scale: 1:4000

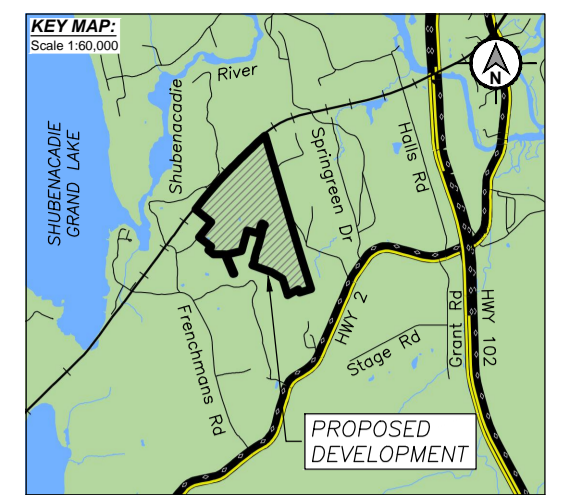
**STORM DRAINAGE CRITERIA - RATIONAL METHOD**

	FLOW TO	FROM POINT	TC (min)	AREAS CONTRIBUTING TO CALCULATE FLOW	AREA (ha)	10YR DESIGN EVENT FLOW (L/s)	100YR DESIGN EVENT FLOW (L/s)
PRE	1	X1	142	A1	24.44	308	832
	2	X2	62	A2	9.75	177	498
	3	X3	41	A3	7.18	161	448
	4	X4	18	A4	0.79	27	72
POST	1	Y1	101	B1	20.89	439	1088
	2	Y2	26	B2	11.30	474	1021
	3	Y3	41	B3	9.39	315	626
	4	Y4	8	B4	0.79	62	143

NOTE:  
SYNTHETIC DESIGN STORM BASED ON HALIFAX METROLOGICAL DATA  
10YR = 141.1mm (24hrs)  
100YR = 232.9mm (24hrs)

10 YEAR STORM  
PRE-DEVELOPMENT RUNOFF COEFFICIENT = 0.20 (FOREST)  
POST-DEVELOPMENT RUNOFF COEFFICIENT = 0.30 (FOREST, GRAVEL, LAWN)

100 YEAR STORM  
PRE-DEVELOPMENT RUNOFF COEFFICIENT = 0.35 (FOREST)  
POST-DEVELOPMENT RUNOFF COEFFICIENT = 0.50 (FOREST, GRAVEL, LAWN)

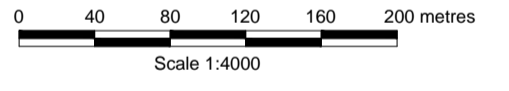


**LEGEND**

	PROPOSED	EXISTING
WATER PIPE & VALVE		
SANITARY MANHOLE & PIPE		
STORM MANHOLE & PIPE		
CATCH BASIN		
NATURAL GAS LINE		
EDGE OF ASPHALT		
EDGE OF GRAVEL		
CURB		
UTILITY LINE, POLE & GUY-WIRE		
FENCE		
GUARDRAIL		
PROPERTY BOUNDARY		
CLEARING LIMIT/TREELINE		
CULVERT		
TREE		
SIGNAGE		
HYDRANT		

**GENERAL NOTES**

- REFERENCE: SITE PLAN SUPPLIED BY CLIENT.  
DIGITAL TOPOGRAPHIC MAPPING BY NOVA SCOTIA GEOMATICS CENTRE.
- PROJECTION: ATS77, NS, MTM ZONE 5.



Rev	Date	Revision Description	App'd

CLIENT: SAWGRASS DEVELOPMENTS LTD.

PROJECT: OAKFIELD WOODS DEVELOPMENT STAGE 2

LOCATION: SAWGRASS DRIVE OAKFIELD, NOVA SCOTIA

TITLE: PRELIMINARY STORMWATER MANAGEMENT PLAN

CONSULTANT: **Strum** CONSULTING  
Engineering \* Surveying \* Environmental  
Bedford \* Antigonish \* Deer Lake

SCALE: H: 1:3000 V:  

STAMP:

DATE	21/12/2014	DRAWN	RW
DESIGNED	RW	CHECKED	CB
APPROVED	CB		

PROJECT No. 13-4779

DRAWING No. C-101