

HALIFAX REGIONAL MUNICIPALITY
ADMINISTRATIVE ORDER NUMBER SC - 47
RESPECTING CLOSURE OF A PORTION OF
Military Road, Purcell's Cove

BE IT RESOLVED AS AN ADMINISTRATIVE ORDER of Council of the Halifax Regional Municipality pursuant to Section 315 of the Municipal Government Act as follows:

A portion of Military Road, Purcell's Cove, Nova Scotia more particularly described in Attachment "A" is hereby closed.

I HEREBY CERTIFY THAT the foregoing Administrative Order was duly adopted by Halifax Regional Council, the 16th day of October, 2007.

Mayor

Municipal Clerk

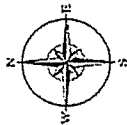
I, Jan Gibson, Municipal Clerk of Halifax Regional Municipality, hereby certify that the above-noted Administrative Order was passed at a meeting of Halifax Regional Council held on October 16, 2007.

Jan Gibson, Municipal Clerk

Notice of Motion:
Approval:

September 11, 2007
October 16, 2007

**ATTACHMENT "A"
SITE PLAN**



**PARCEL B -
MILITARY ROAD**

LEGEND

SUBJECT PROPERTY

This map was produced for the internal use of Halifax Regional Municipality (HRM). HRM takes no responsibility for errors or omissions.

For further information on civic address, street, street names, or community (CSX) data please contact HRM Civic Addressing at 486-5547 or email civicadd@halifax.ca.

For further information on sewer infrastructure please contact HRM Environmental Engineering Services at 490-5549 or email sewerinfo@halifax.ca.

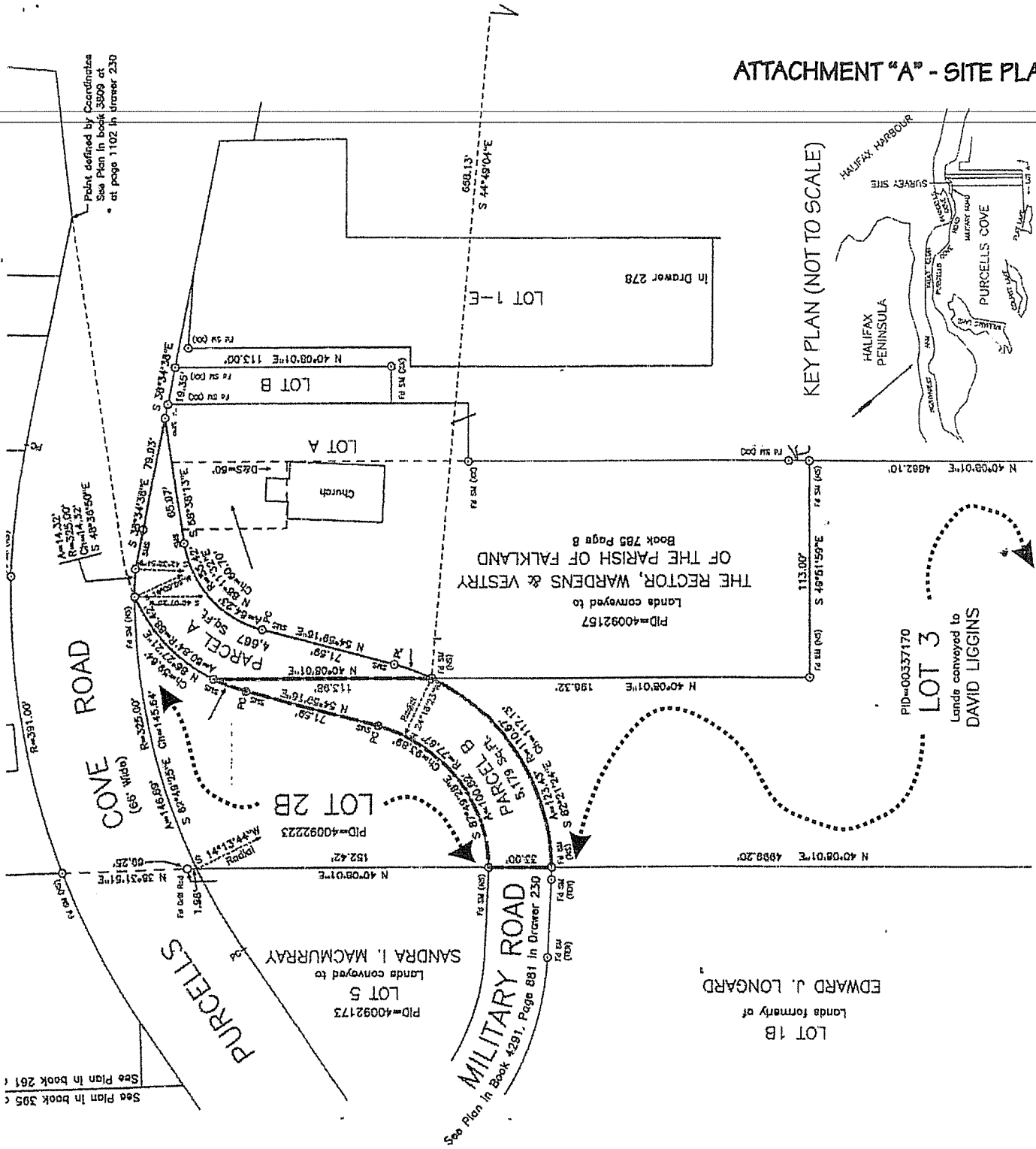
For further information on zoning data please contact HRM Planning & Development Services at 486-4494 or email zoninginquiries@halifax.ca.

For further information regarding any other aspect of this plan please contact HRM Geographic Information Systems & Services at 490-8998 or email geoinfo@halifax.ca.

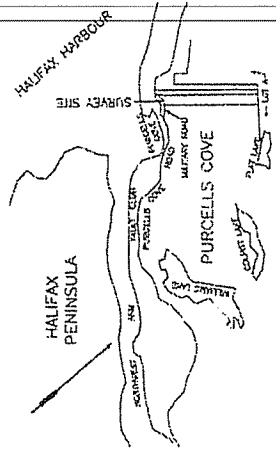
Date of map is not indicative of the date of data collection. Scale of map is valid only if printed at 11x8.5 inches.

Projection is Modified Transverse Mercator Zone 5.

ATTACHMENT "A" - SITE PLAN



KEY PLAN (NOT TO SCALE)



Point defined by Coordinates
See Plan in book 3909 at
• at page 1102 in Drawer 230

See Plan in book 395
See Plan in book 261