

Session Agenda

Session One: 1:30pm to 3:30pm

1:30pm Welcome and Introductions

1:40pm to 2:00pm HRM Staff Presentation

2:00pm to 2:10pm Question Period

2:10pm to 3:30pm Open House & Discussion Tables

Session Agenda

Session Two: 6:00pm to 8:00pm

6:00pm Welcome and Introductions

6:10pm to 6:30pm HRM Staff Presentation

6:30pm to 6:40pm Question Period

6:40pm to 8:00pm Open House & Discussion Tables

Session Agenda

Session Three: 6:30pm to 8:30pm

6:30pm Welcome and Introductions

6:40pm to 7:00pm HRM Staff Presentation

7:00pm to 7:30pm Question Period

7:30pm to 8:30pm Open House & Discussion Tables

Why We Are Here?

1. Provide an overview of the new Rural Active Transportation Program
2. Learn the community perspective on:
 - sidewalks or multi-use pathways in Upper Tantallon
 - the proposed area tax rate
 - the preliminary area rate boundary
3. Answer other questions and take suggestions



Example of a sidewalk and multi-use pathway on a mainstreet

HALIFAX

Rural Active Transportation (AT) Program

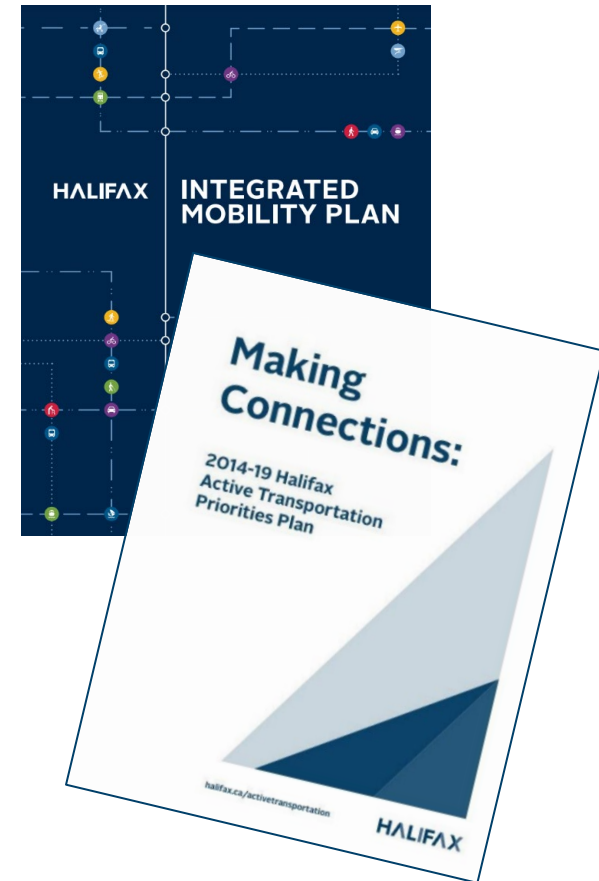
Area Rate Engagement
March 21, 2024

Background: Rural AT Program

Active Transportation Priorities Plan and Integrated Mobility Plan provide direction for Rural Active Transportation Program.

Establish a **rural pedestrian program** that includes:

- a **financing mechanism** which recognizes that rural pedestrian safety is affected by regional traffic;
- criteria **to prioritize development in village centres**, hamlets, or other rural areas of concentrated pedestrian activity;
- and **opportunities for cost sharing** with other orders of government.



Background: What is a sidewalk or multi-use pathway?



Sidewalk. Pedestrian only.



Multi-Use Pathway. Pedestrian & Cycling (and other rolling activities)

Background: Why do we build sidewalks and multi-use pathways?

- Improve **safety** by providing designated space for pedestrians and cyclists
- Make it easier for people to improve their **physical and mental health**.
- Facilitate **community development**.
- Enhance community cohesion through **creating connections**.

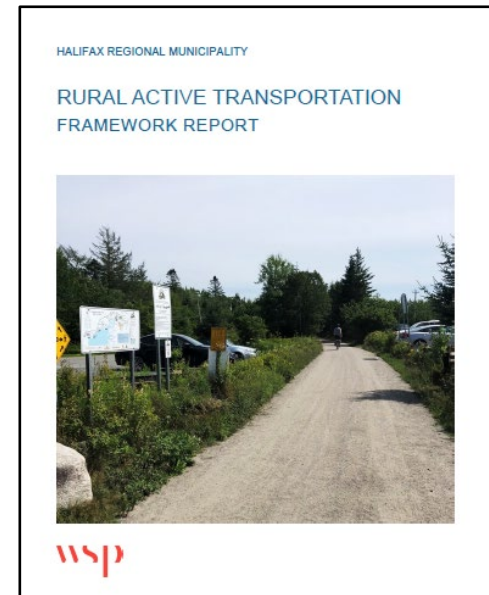


Multi-Use Pathway

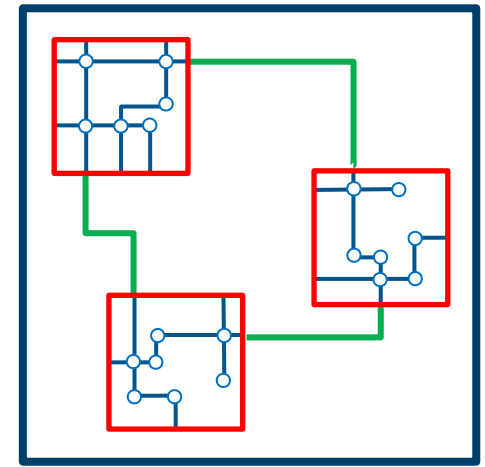
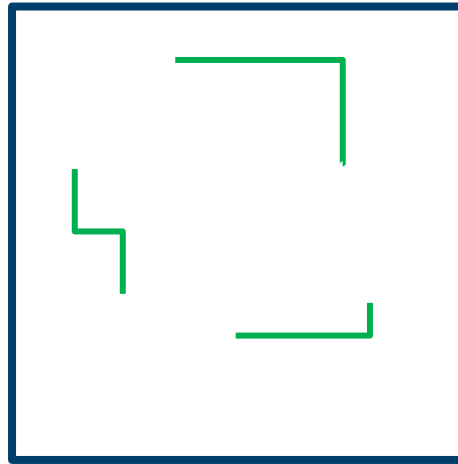
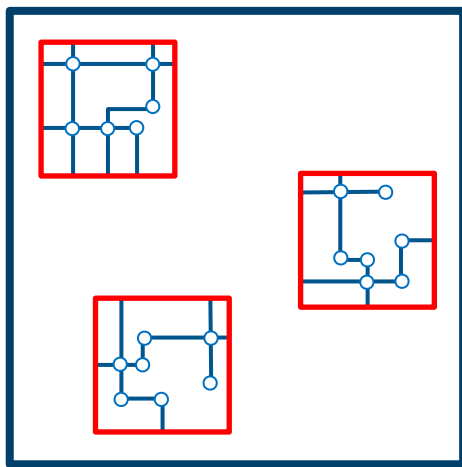
Rural AT Program: Overview

Rural Active Transportation Program (approved February 8, 2022):

1. Sidewalks and multi-use pathways in **rural community centres**.
2. Long term vision for “**spine**” **connections between rural community centres**
3. Continued **support for community-led trails and greenways** with HRM’s existing Active Transportation Grant Program (e.g., St. Margarets Bay Trail).



Rural AT Program: Building a Rural Active Transportation Network



Rural Community Centres with sidewalks and multi-use pathways

“Spine” Connections **Between Rural Communitie Centres**

Connected Rural Network of Active Transportation Infrastructure

Sidewalks and Multi-Use Pathways in Rural Community Centres: Implementation Timeline

2023

Determine five priority communities from the seventeen rural candidate communities and a preliminary area rate boundary for each.

2024

Engage property owners and residents on proposed area tax rate, and preliminary area rate boundary. Prepare report to seek Regional Council direction.

If recommended, and approved by Regional Council...

**2024
to
2032**

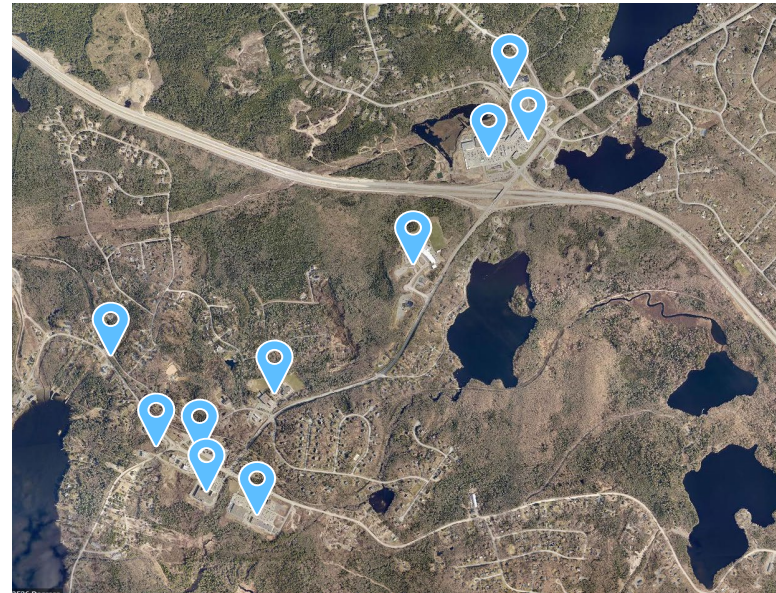
...candidate rural communities will enter planning, and design phase for their initial sidewalk or multi-use pathway, planned to be completed no later than 2032.

Sidewalks and Multi-Use Pathways in Rural Community Centres: Prioritized Communities

All 17 candidate communities were prioritized based on criteria such as population density, safety, equity, community planning and advocacy, and number of local or regional destinations.

The five prioritized communities are:

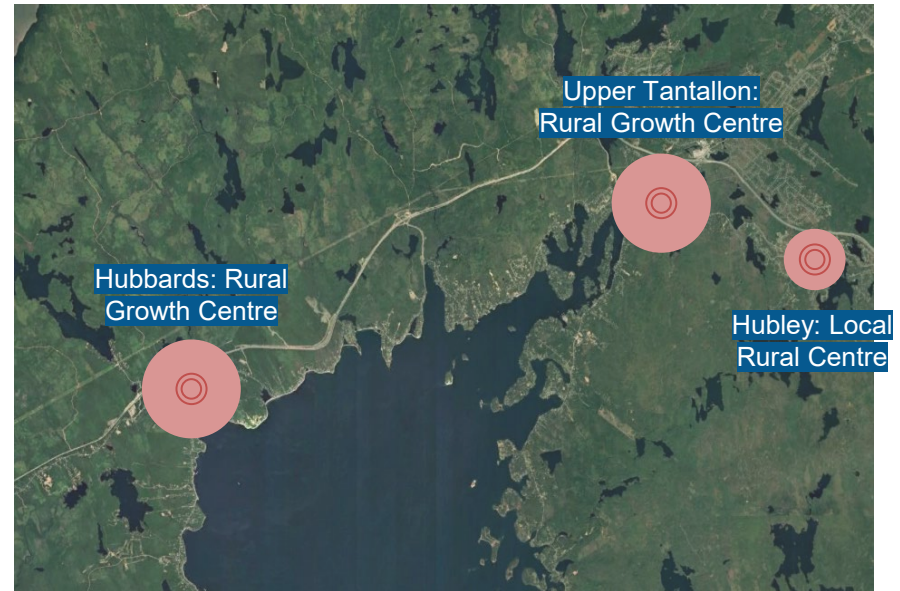
- Hubbards
- Porters Lake
- Lucasville
- Musquodoboit Harbour
- Upper Tantallon



Destinations In Upper Tantallon

Prioritized Communities: Why was Upper Tantallon Prioritized?

- ✓ Regional & local destination
- ✓ Rural Growth Centre
- ✓ Upper Tantallon community visioning statement
- ✓ Traffic volumes, speeds, and collision rates
- ✓ Village Core (concentrated commercial and service area)
- ✓ High number of pedestrians and cyclists

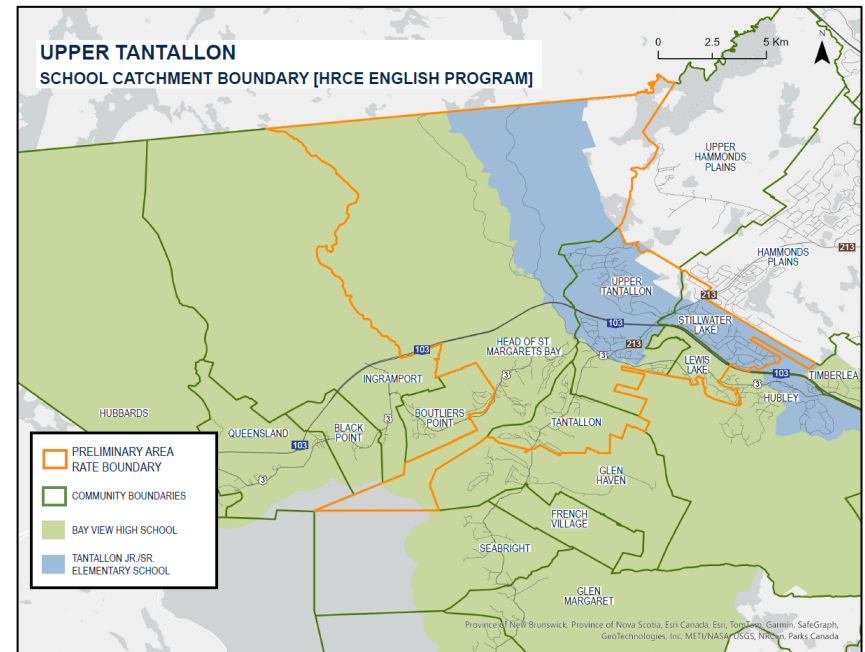


*Rural Growth Centres Map
(Regional Plan, 2014)*

Prioritized Communities: Preliminary Area Rate Boundary for Public Feedback

Purpose of Area Rate Boundary:

- Capture communities that use the area of the potential new sidewalks or multi-use pathways.
- Recognizing that pedestrian safety is impacted by regional traffic.

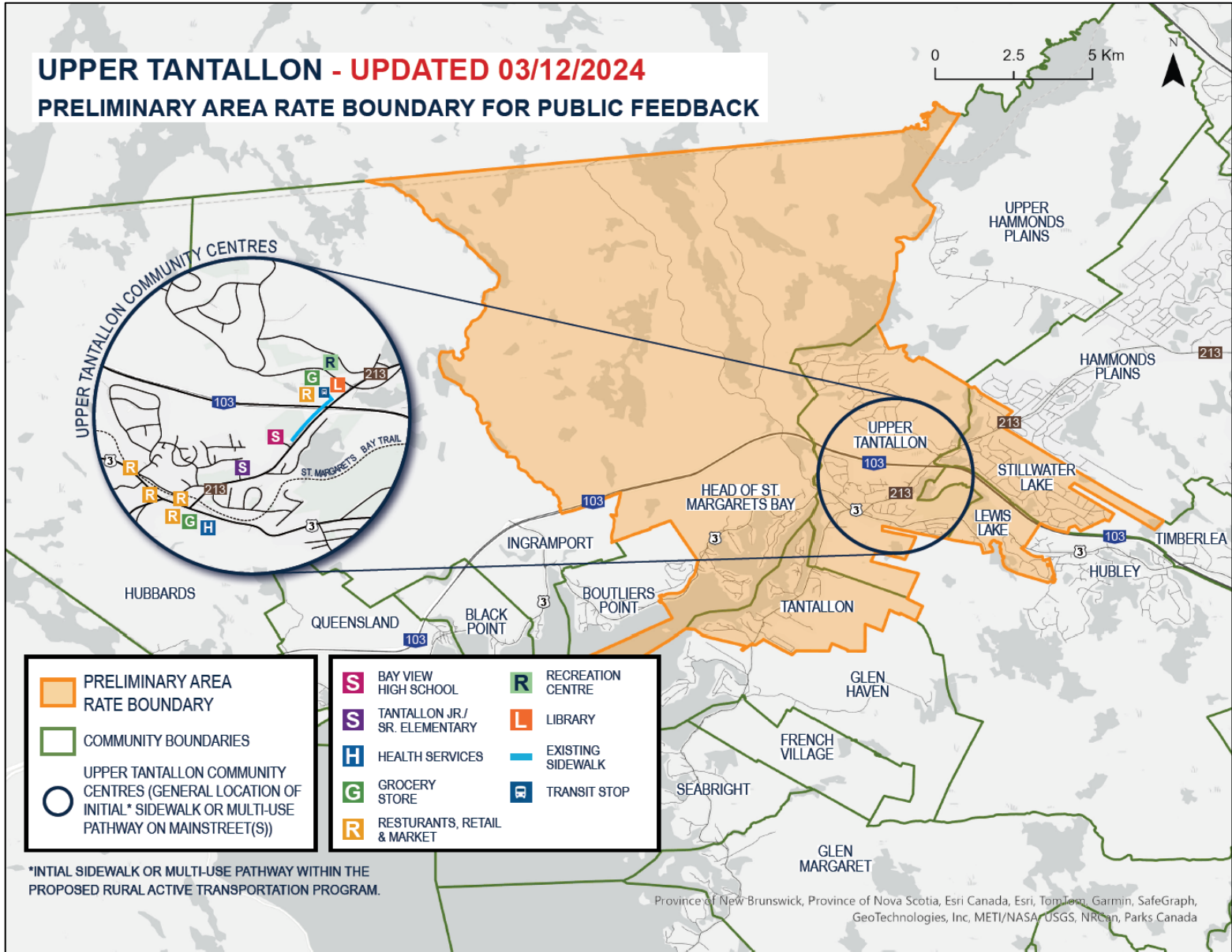


School Catchment Boundary for Shattford Memorial Elementary School

UPPER TANTALLON - UPDATED 03/12/2024

PRELIMINARY AREA RATE BOUNDARY FOR PUBLIC FEEDBACK

0 2.5 5 Km



- | | | |
|---|-------------------------------|-------------------|
| PRELIMINARY AREA RATE BOUNDARY | BAY VIEW HIGH SCHOOL | RECREATION CENTRE |
| COMMUNITY BOUNDARIES | TANTALLON JR./ SR. ELEMENTARY | LIBRARY |
| UPPER TANTALLON COMMUNITY CENTRES (GENERAL LOCATION OF INITIAL* SIDEWALK OR MULTI-USE PATHWAY ON MAINSTREET(S)) | HEALTH SERVICES | EXISTING SIDEWALK |
| | GROCERY STORE | TRANSIT STOP |
| | RESTURANTS, RETAIL & MARKET | |

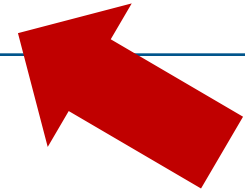
*INITIAL SIDEWALK OR MULTI-USE PATHWAY WITHIN THE PROPOSED RURAL ACTIVE TRANSPORTATION PROGRAM.

Province of New Brunswick, Province of Nova Scotia, Esri Canada, Esri, TomTom, Garmin, SafeGraph, GeoTechnologies, Inc, METI/NASA, USGS, NRCan, Parks Canada

Municipal Tax Rates: Residential Property

General Rates & Services

Rural General Rate = \$0.616	Urban General Rate = \$0.649
Policing (RCMP), Solid Waste, Community Facilities (Recreation, Libraries, Community Centres), Recreational Programs, Parks, Trails, Sport fields and Playgrounds, Fire Suppression, Streetlighting, Administration, Planning	Policing, Solid Waste, Community Facilities (Recreation, Libraries, Community Centres), Recreational Programs, Parks, Trails, Sport fields and Playgrounds, Fire Suppression, Streetlighting, Administration, Planning
<i>Not Included</i>	Sidewalks



Municipal Services: Examples of Existing General Rate Services in Upper Tantallon



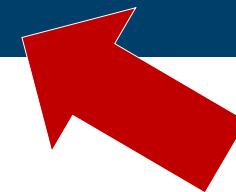
Municipal Tax Rates: Residential Property

General Rates & Services

Rural General Rate = \$0.616	Urban General Rate = \$0.649
Policing (RCMP), Solid Waste, Community Facilities (Recreation, Libraries, Community Centres), Recreational Programs, Parks, Trails, Sport fields and Playgrounds, Fire Suppression, Streetlighting, Administration, Planning	Policing, Solid Waste, Community Facilities (Recreation, Libraries, Community Centres), Recreational Programs, Parks, Trails, Sport fields and Playgrounds, Fire Suppression, Streetlighting, Administration, Planning
<i>Not Included</i>	Sidewalks

Urban General Rate \$0.649 – Rural General Rates \$0.616
= \$0.033 (3.3 cents)

All rates shown are per \$100 of taxable property value



Municipal Tax Rates: Residential Property

General Rates & Services

Rural General Rate = \$0.616	Urban General Rate = \$0.649
Policing (RCMP), Solid Waste, Community Facilities (Recreation, Libraries, Community Centres), Recreational Programs, Parks, Trails, Sport fields and Playgrounds, Fire Suppression, Streetlighting, Administration, Planning	Policing, Solid Waste, Community Facilities (Recreation, Libraries, Community Centres), Recreational Programs, Parks, Trails, Sport fields and Playgrounds, Fire Suppression, Streetlighting, Administration, Planning
<i>Not Included</i>	Sidewalks

Urban General Rate \$0.649 – Rural General Rates \$0.616
 = **\$0.033 (3.3 cents)**

All rates shown are per \$100 of taxable property value

Note: Additional services not included in general rates include **supplementary education, climate action, provincial rates, transit, fire protection (hydrants), right-of-way, and water and wastewater utility**. Most properties within the urban tax boundary pay all of these rates. Properties within the rural tax boundary pay a combination of these additional rates only if they are eligible for the associated service.



Municipal Taxes: Reason for Proposed Area Tax Rate for Sidewalk or Multi-Use Pathway Eligibility

- An area rate of **3.3 cents /\$100** of assessed taxable (capped) property value was chosen because:
 - **3.3 cents is the difference** between the urban general tax rate and rural general tax rate; and,
 - the construction and maintenance **of sidewalks (or multi-use pathways) is the difference** in eligible services between the urban general tax rate and the rural general tax rate.

Area Tax rate: Overview

- Applied to all commercial, residential and resource properties that pay the rural general rate.
- Applied after the initial sidewalk or multi-use pathway is substantially completed and applied in perpetuity.
- Communities paying the rate are eligible for additional sidewalks or multi-use pathways in perpetuity.
- Will not increase as additional sidewalks or multi-use pathways are constructed.
- Collected funds can only be used for communities who are paying the area rate.

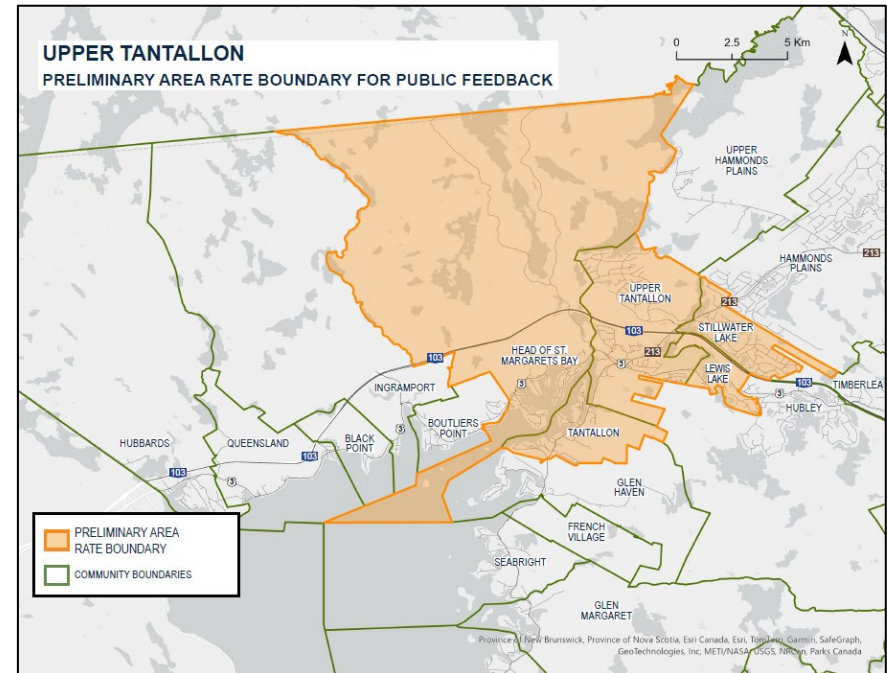
Area Tax Rate: Taxable Property Value & Tax Increase Per Year

Assessed Taxable (capped) Property Value	Tax Increase to Property Owner (per year values)
\$100 - \$100,000	\$0.033 - \$33
\$100,000 - \$200,000	\$33 - \$66
\$200,000- \$300,000	\$66 - \$99
\$300,000- \$400,000	\$99 - \$132
\$400,000 - \$500,000	\$132 - \$165
\$500,000 - \$1,000,000	\$165 - \$333
\$1,000,000 - \$2,000,000	\$333 - \$666

Area Tax Rate: Preliminary Area Rate Boundary Revenue

The estimated funds collected from the preliminary area rate boundary for Upper Tantallon is **\$454,003.64 per year**.

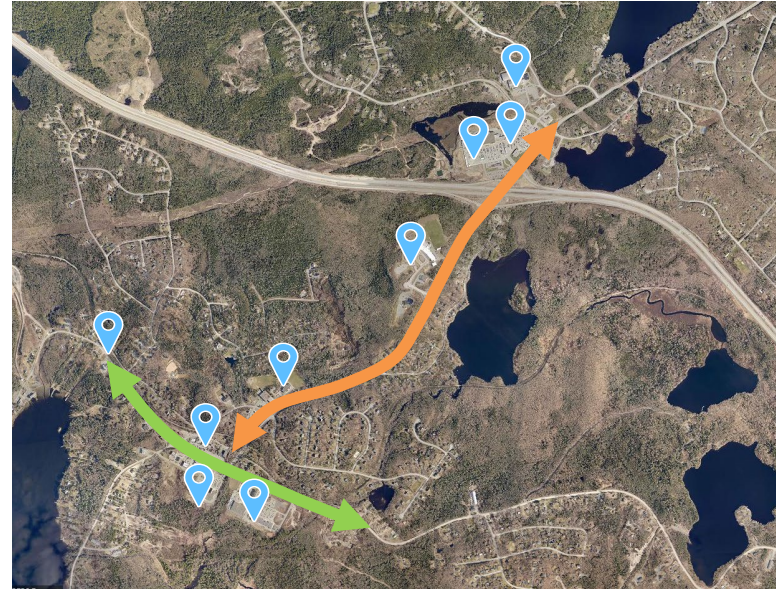
This number can change based on community feedback on the preliminary area rate boundary.



Current preliminary area rate boundary for public feedback

Sidewalk or Multi-Use Pathway Locations

If the proposed area rate is approved by Regional Council, the next step would be to conduct planning and design to determine the locations of the sidewalks or multi-use pathways, and a phased approach for implementation.



*Destinations and mainstreets in Upper Tantallon.
Example of where initial sidewalk or multi-use
pathways could be. **Not an official map.***

Estimated Costs

The cost to construct a sidewalk or multi-use pathway is **\$1.5 million to \$4 million per kilometer**. This could include; stormwater piping, ditch filling, land acquisition, drainage, rock breaking, streetscaping, and/or a retaining wall. Maintenance is **\$11,000 per year, per kilometer**.



Public Engagement: Learn More & Provide Feedback

- Letters to Residents and Property Owners
- Shape Your City webpage (public engagement platform)
- Survey (Open until April 21st)
- halifax.ca webpage (municipal website)
- Social media posts; location targeted ads
- Regional Councilor Newsletter
- Public Meeting and Open house
- Pop-ups (if needed)



Area Rate for Sidewalks and Multi- Use Pathways in Rural Community...

The municipality is hosting community engagement in five rural communities to determine commun...

[Read More](#)

Contact Project Manager, Emma Martin
martinem@halifax.ca or 902-490-4920

Conclusion: Key Takeaways

- Looking to understand community perspectives to advise Regional Council recommendation on the following:
 - Is the community interested in having sidewalks or multi-use pathways in Upper Tantallon?
 - Does the community understand and support the proposed area tax rate?
 - Does the community agree with the preliminary area rate boundary?
- We are aiming to take area tax rate and area rate boundary recommendations for the five priority communities to Community Council and then Regional Council in Spring-Summer 2024.

An architectural rendering of a vibrant street scene. The main building is a three-story structure with a warm orange facade and numerous windows with white frames. To its left, a portion of a blue building with a striped awning is visible. In the foreground, there's an outdoor seating area with wooden tables and chairs, some under green umbrellas. A white car is parked on the street, and a planter box with green bushes is in the immediate foreground. The sky is a clear, bright blue.

Thank You!

HALIFAX

Questions for Community

1. Do you think that Upper Tantallon is a good location for sidewalks or multi-use pathways? Why or why not?
2. Do you understand and support the proposed area tax rate? Why or why not?
3. Do you agree with the preliminary area rate boundary? If not, where do you think the boundary should be?
4. Do you have any other comments or questions?